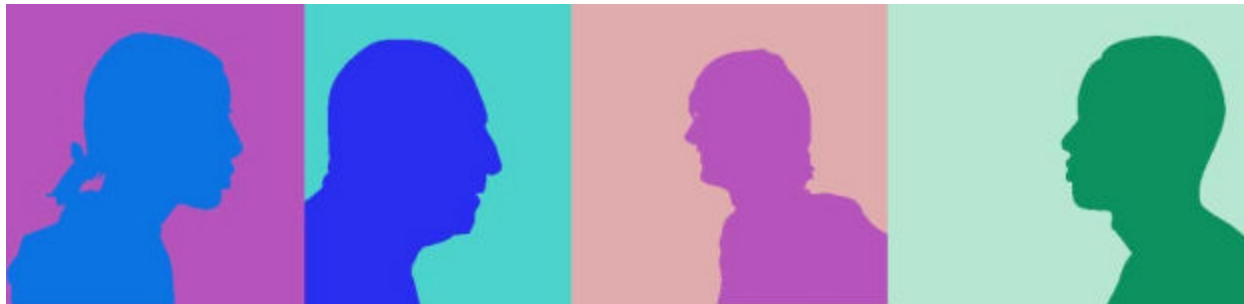


Problem gambling screening, assessment and diagnosis: **Chances are, one of the clients you'll see today has a problem with gambling.**



Ask your clients if they gamble.

- **Pathological and problem gambling can lead to debt, bankruptcy, divorce, illegal activities, domestic violence, child neglect and suicide.** You can't smell it on their breath or see it in their eyes. So if your clients gamble, screen **for** pathological gambling.

Screen for pathological gambling by asking 2 questions.

- **The Lie/Bet tool (Johnson et al., 1988) has good validity and reliability.** Ask these questions to rule out pathological gambling.
 - ⇒ 1. Have you ever felt the need to bet more and more money?
 - ⇒ 2. Have you ever lied to people important to you about how much you gambled?
- **If the answer is “no” on both questions, no follow-up or referral is necessary**
- **If the answer is “yes” to one or both questions, administer a longer screening interview tool like the South Oaks Gambling Screen (SOGS).** The 20-item SOGS screening instrument can be self or counselor administered. **make a referral to an ODMHSAS Certified Gambling Treatment Program part of the plan of treatment.** A score of five or more suggests the presence of pathological gambling. A score of 3 or 4 suggests a problem with gambling. Download the SOGS from this ODMHSAS web address:
<http://www.odmhsas.org/ProblemGambling/>

Assess for pathological or problem gambling.

- **If the answer is “yes” to one or both of the Lie/Bet questions, administer a longer screening interview tool like the South Oaks Gambling Screen (SOGS).** The 20-item SOGS screening instrument can be self or counselor administered. A score of five or more suggests the presence of pathological gambling. A score of 3 or 4 suggests a problem with gambling. Download the SOGS from this ODMHSAS web address:
<http://www.odmhsas.org/ProblemGambling/>

- **Conduct an assessment using DSM-IV for pathological Gambling (DSM-IV Code 312.31).** Satisfying 5 criteria indicates pathological gambling. Meeting 3-4 criteria indicates the presence of problem gambling.

Diagnose Pathological or Problem Gambling (The codes for ICD-9 and DSM-IV are the same for gambling)

- **Persistent and recurrent maladaptive gambling behavior as indicated by the following criteria.** The gambling behavior is not better accounted for by a Manic Episode.

- ⇒ **Axis 1/Code 312.31 - Pathological Gambling** (meets 5 or more criteria)
- ⇒ **Axis 1/Code V69.3 - Gambling and betting (problems related to lifestyle)** (problem gambling: meets 3-4 criteria)
- ⇒ **Axis 1/Code V61.9 - Relational Problem Related to Pathological Gambling** - (family or significant other effected by problem gambling)

1. **Preoccupied with gambling** - is preoccupied with gambling (e.g., preoccupied with reliving past gambling experiences, handicapping or planning the next venture, or thinking of ways to get money with which to gamble)
2. **Increased tolerance** - needs to gamble with increasing amounts of money in order to achieve the desired excitement
3. **Loss of control** - has repeated unsuccessful efforts to control, cut back, or stop gambling
4. **Withdrawal** - is restless or irritable when attempting to cut down or stop gambling
5. **Gambles to escape** - gambles as a way of escaping from problems or of relieving a dysphoric mood (e.g., feelings of helplessness, guilt, anxiety, depression)
6. **Chases losses with more gambling** - after losing money gambling, often returns another day in order to get even ("chasing" one's losses)
7. **Lies to conceal extent of gambling** - lies to family members, therapist, or others to conceal the extent of involvement with gambling
8. **Illegal acts** - has committed illegal acts such as forgery, fraud, theft, or embezzlement to finance gambling
9. **Jeopardizes significant relationships** - has jeopardized or lost a significant relationship, job, or educational or career opportunity because of gambling
10. **Bailout** - relies on others to provide money to relieve a desperate financial situation caused by gambling