

Outpatient Initiation-Trend Line

Outpatient Initiation for Individuals Discharged/Level of Care Change
for the last Twelve Quarters at (640) 12 & 12, INC.

Report Date : 2/5/2008

Data Last Updated on: 02/03/2008

Report Description:

Washington Circle Measures - <http://www.washingtoncircle.org>

Measure: Outpatient Initiation

The information provided in this report reflects the number of discharges/level of care changes, rather than the number of individuals. For example, if a person is discharged five times during the selected time period, the number of discharges would be five. To be included in this report, at least one service must be reported after admission. Also, when an episode includes more than one service reported under multiple contract sources, the episode will be counted under each contract source, but will only be counted once under the 'All Contract Sources' or 'All Substance Abuse Contract Sources (PPMR)' report.

DEFINITIONS:

Initiated: Individual received one additional non-crisis service within 14 days of initial service after admission.

Not Initiated: Individual did not receive one additional non-crisis services within 14 days of initial service after admission.

Discharge: Individual leaves treatment at that agency.

Level of Care Change: Individual is moving from either detox, residential treatment, halfway house or outpatient to another level of care within an agency.

Systemwide: Represents all ODMHSAS-contracted and operated facilities which have that level of care and contract source.

All Substance Abuse Contract Sources (PPMR): Includes the following contract source codes: 02, 03, 17, 20, 21, 22, 23, 27, 29, 41, 44, 49, 54, 61 and 70. These contract sources are included in the Substance Abuse Provider Performance Management Report.

All Contract Sources: All contract sources which this agency reports.

Notes:

Data for this report are only updated by ODMHSAS staff at intervals. If the "Data Last Updated on:" is more than two weeks past, please contact Mark A.

Discharge Codes:	<u>Planned</u>	60 - Completed Treatment	<u>Unplanned</u>	62 - Left ACA/90 Days	<u>Other</u>	63 - Moved
		61 - Completed Court Treatment		66 - Broke Rules		64 - Transferred to another treatment facility
		40 - Level of Care Change		67 - AWOL		65 - Incarcerated
				70 - Discharge Due to Treatment Incompatibility		68 - Death
				92 - No service in 180 Days (auto-discharge)		69 - Failed to begin Treatment

Outpatient Initiation-Trend Line

Outpatient Initiation for Individuals Discharged/Level of Care Change Between for the last Twelve Quarters

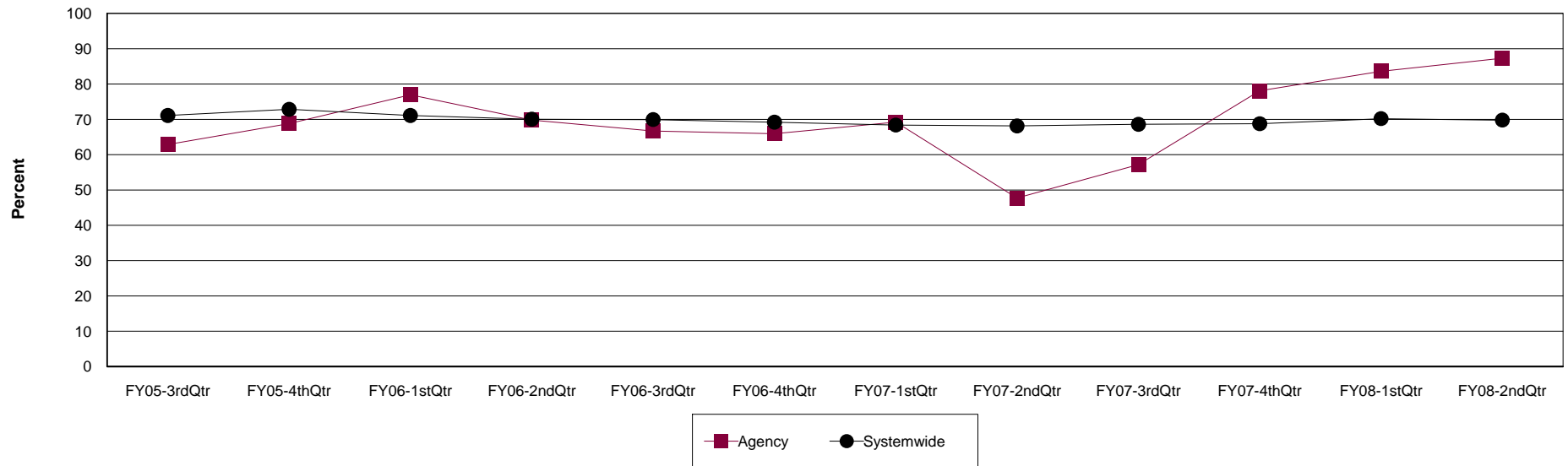
Agency: (640) 12 & 12, INC.

Level of Care: Outpatient

Contract Source: All Substance Abuse Contract Sources (PPMR)

Age Group: Adults (18+)

Outpatient Initiation at 12 & 12, INC.



Agency	FY05-3rdQtr	FY05-4thQtr	FY06-1stQtr	FY06-2ndQtr	FY06-3rdQtr	FY06-4thQtr	FY07-1stQtr	FY07-2ndQtr	FY07-3rdQtr	FY07-4thQtr	FY08-1stQtr	FY08-2ndQtr
Initiated	44	53	90	37	48	58	81	42	36	57	51	48
Discharges	70	77	117	53	72	88	117	88	63	73	61	55
Percent	62.9%	68.8%	76.9%	69.8%	66.7%	65.9%	69.2%	47.7%	57.1%	78.1%	83.6%	87.3%

Systemwide	FY05-3rdQtr	FY05-4thQtr	FY06-1stQtr	FY06-2ndQtr	FY06-3rdQtr	FY06-4thQtr	FY07-1stQtr	FY07-2ndQtr	FY07-3rdQtr	FY07-4thQtr	FY08-1stQtr	FY08-2ndQtr
Initiated	1,654	1,759	1,656	1,630	1,347	1,413	1,492	1,417	1,592	1,648	1,496	1,118
Discharges	2,326	2,415	2,329	2,327	1,926	2,042	2,182	2,080	2,321	2,397	2,131	1,602
Percent	71.1%	72.8%	71.1%	70.0%	69.9%	69.2%	68.4%	68.1%	68.6%	68.8%	70.2%	69.8%

Outpatient Initiation-Trend Line

Outpatient Initiation for Individuals Discharged/Level of Care Change Between for the last Twelve Quarters

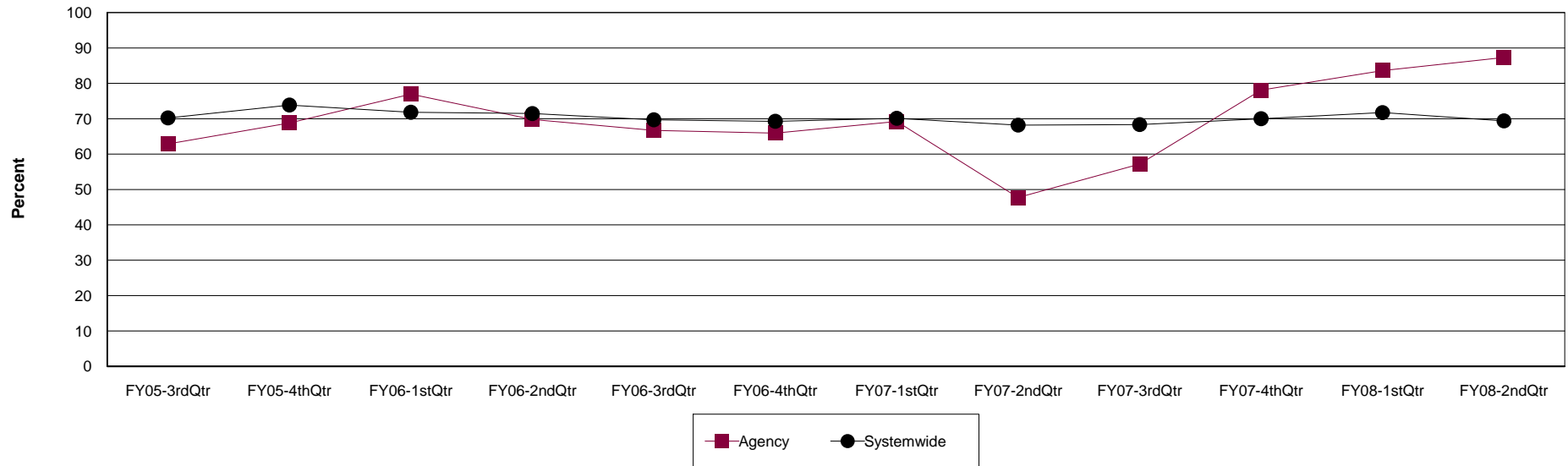
Agency: (640) 12 & 12, INC.

Level of Care: Outpatient

Contract Source: All Contract Sources

Age Group: Adults (18+)

Outpatient Initiation at 12 & 12, INC.



Agency	FY05-3rdQtr	FY05-4thQtr	FY06-1stQtr	FY06-2ndQtr	FY06-3rdQtr	FY06-4thQtr	FY07-1stQtr	FY07-2ndQtr	FY07-3rdQtr	FY07-4thQtr	FY08-1stQtr	FY08-2ndQtr
Initiated	44	53	90	37	48	58	81	42	36	57	51	48
Discharges	70	77	117	53	72	88	117	88	63	73	61	55
Percent	62.9%	68.8%	76.9%	69.8%	66.7%	65.9%	69.2%	47.7%	57.1%	78.1%	83.6%	87.3%

Systemwide	FY05-3rdQtr	FY05-4thQtr	FY06-1stQtr	FY06-2ndQtr	FY06-3rdQtr	FY06-4thQtr	FY07-1stQtr	FY07-2ndQtr	FY07-3rdQtr	FY07-4thQtr	FY08-1stQtr	FY08-2ndQtr
Initiated	1,146	1,243	1,221	1,225	1,049	1,019	1,166	1,078	1,213	1,257	1,147	848
Discharges	1,632	1,683	1,700	1,714	1,505	1,471	1,663	1,581	1,775	1,796	1,599	1,222
Percent	70.2%	73.9%	71.8%	71.5%	69.7%	69.3%	70.1%	68.2%	68.3%	70.0%	71.7%	69.4%

Outpatient Initiation-Trend Line

Outpatient Initiation for Individuals Discharged/Level of Care Change Between for the last Twelve Quarters

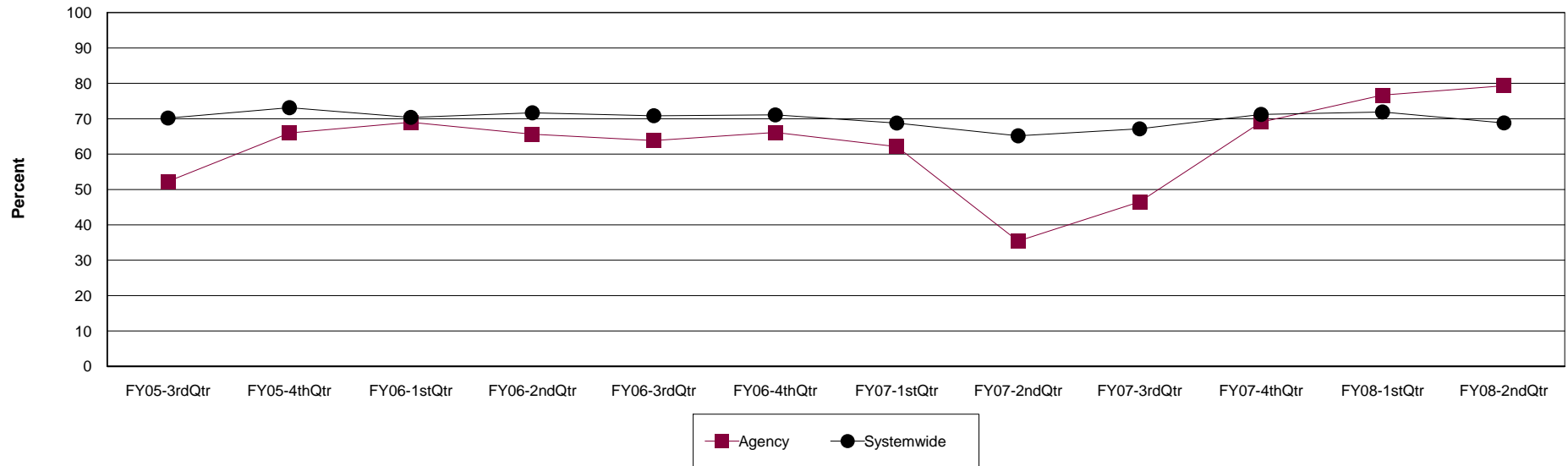
Agency: (640) 12 & 12, INC.

Level of Care: Outpatient

Contract Source: (02) ALCOHOL/DRUG

Age Group: Adults (18+)

Outpatient Initiation at 12 & 12, INC.



Agency	FY05-3rdQtr	FY05-4thQtr	FY06-1stQtr	FY06-2ndQtr	FY06-3rdQtr	FY06-4thQtr	FY07-1stQtr	FY07-2ndQtr	FY07-3rdQtr	FY07-4thQtr	FY08-1stQtr	FY08-2ndQtr
Initiated	23	31	49	21	30	41	41	17	20	29	23	23
Discharges	44	47	71	32	47	62	66	48	43	42	30	29
Percent	52.3%	66.0%	69.0%	65.6%	63.8%	66.1%	62.1%	35.4%	46.5%	69.0%	76.7%	79.3%

Systemwide	FY05-3rdQtr	FY05-4thQtr	FY06-1stQtr	FY06-2ndQtr	FY06-3rdQtr	FY06-4thQtr	FY07-1stQtr	FY07-2ndQtr	FY07-3rdQtr	FY07-4thQtr	FY08-1stQtr	FY08-2ndQtr
Initiated	803	914	886	886	726	681	698	580	672	688	599	470
Discharges	1,144	1,250	1,259	1,236	1,025	958	1,015	890	1,001	966	833	683
Percent	70.2%	73.1%	70.4%	71.7%	70.8%	71.1%	68.8%	65.2%	67.1%	71.2%	71.9%	68.8%

Outpatient Initiation-Trend Line

Outpatient Initiation for Individuals Discharged/Level of Care Change Between for the last Twelve Quarters

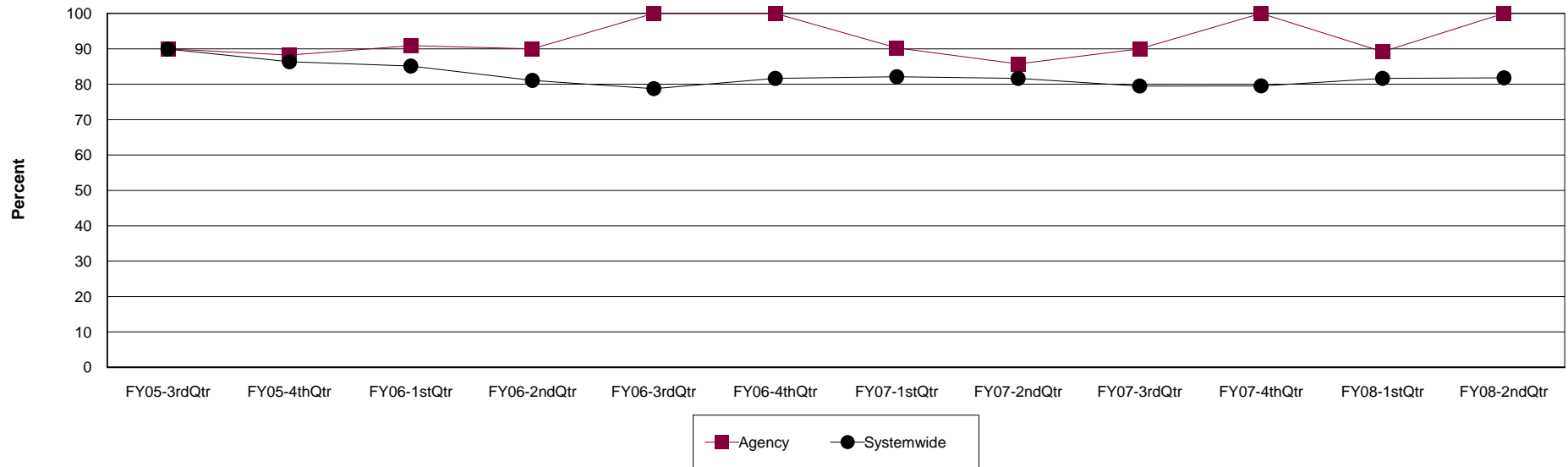
Agency: (640) 12 & 12, INC.

Level of Care: Outpatient

Contract Source: (20) DRUG COURT

Age Group: Adults (18+)

Outpatient Initiation at 12 & 12, INC.



Agency	FY05-3rdQtr	FY05-4thQtr	FY06-1stQtr	FY06-2ndQtr	FY06-3rdQtr	FY06-4thQtr	FY07-1stQtr	FY07-2ndQtr	FY07-3rdQtr	FY07-4thQtr	FY08-1stQtr	FY08-2ndQtr
Initiated	18	15	30	18	19	16	37	24	18	26	33	28
Discharges	20	17	33	20	19	16	41	28	20	26	37	28
Percent	90.0%	88.2%	90.9%	90.0%	100.0%	100.0%	90.2%	85.7%	90.0%	100.0%	89.2%	100.0%

Systemwide	FY05-3rdQtr	FY05-4thQtr	FY06-1stQtr	FY06-2ndQtr	FY06-3rdQtr	FY06-4thQtr	FY07-1stQtr	FY07-2ndQtr	FY07-3rdQtr	FY07-4thQtr	FY08-1stQtr	FY08-2ndQtr
Initiated	232	221	303	317	289	307	427	396	496	497	516	328
Discharges	258	256	356	391	367	376	520	485	624	625	632	401
Percent	89.9%	86.3%	85.1%	81.1%	78.7%	81.6%	82.1%	81.6%	79.5%	79.5%	81.6%	81.8%

Outpatient Initiation-Trend Line

Outpatient Initiation for Individuals Discharged/Level of Care Change Between for the last Twelve Quarters

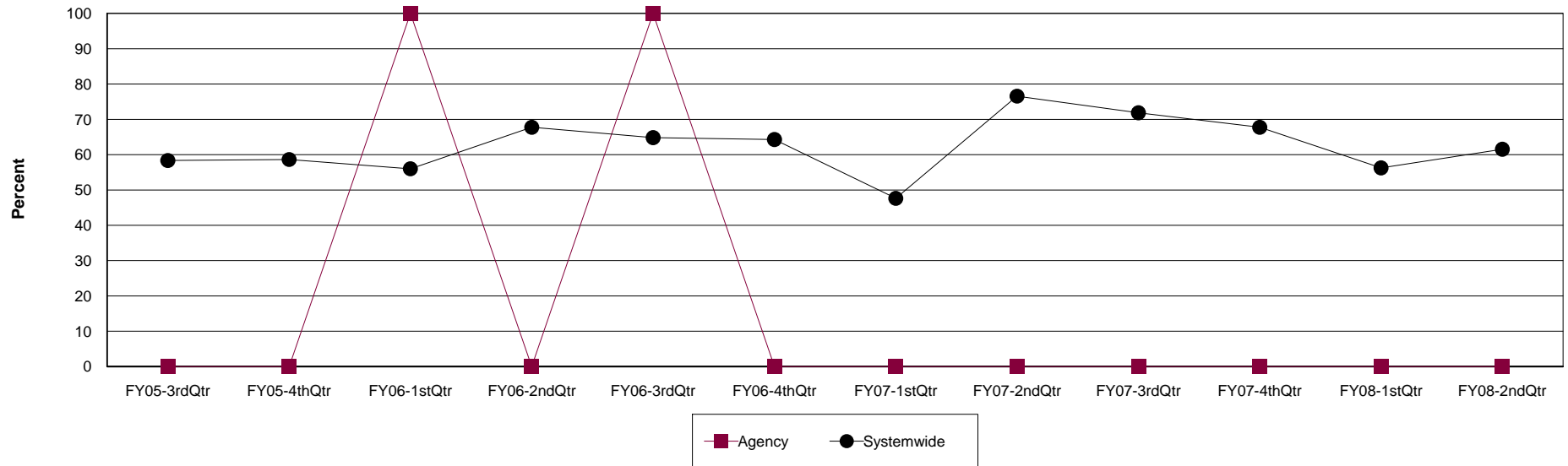
Agency: (640) 12 & 12, INC.

Level of Care: Outpatient

Contract Source: (21) ALCOHOL/DRUG SPECIALIZED PROGRAMS

Age Group: Adults (18+)

Outpatient Initiation at 12 & 12, INC.



Agency	FY05-3rdQtr	FY05-4thQtr	FY06-1stQtr	FY06-2ndQtr	FY06-3rdQtr	FY06-4thQtr	FY07-1stQtr	FY07-2ndQtr	FY07-3rdQtr	FY07-4thQtr	FY08-1stQtr	FY08-2ndQtr
Initiated	0	0	1	0	1	0	0	0	0	0	0	0
Discharges	0	0	1	0	1	0	0	0	0	1	0	1
Percent	0.0%	0.0%	100.0%	0.0%	100.0%	0.0%	0.0%	0.0%	0.0%	0.0%	0.0%	0.0%

Systemwide	FY05-3rdQtr	FY05-4thQtr	FY06-1stQtr	FY06-2ndQtr	FY06-3rdQtr	FY06-4thQtr	FY07-1stQtr	FY07-2ndQtr	FY07-3rdQtr	FY07-4thQtr	FY08-1stQtr	FY08-2ndQtr
Initiated	14	17	14	21	35	18	10	49	23	21	9	8
Discharges	24	29	25	31	54	28	21	64	32	31	16	13
Percent	58.3%	58.6%	56.0%	67.7%	64.8%	64.3%	47.6%	76.6%	71.9%	67.7%	56.3%	61.5%

Outpatient Initiation-Trend Line

Outpatient Initiation for Individuals Discharged/Level of Care Change Between for the last Twelve Quarters

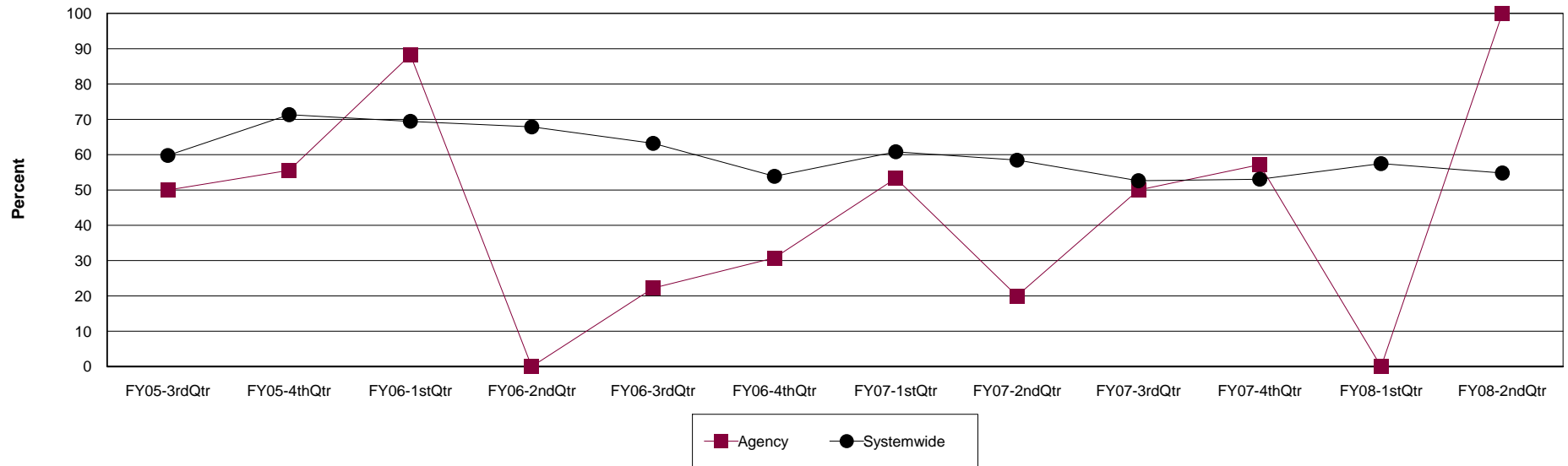
Agency: (640) 12 & 12, INC.

Level of Care: Outpatient

Contract Source: (29) PROBATION AND PAROLE

Age Group: Adults (18+)

Outpatient Initiation at 12 & 12, INC.



Agency	FY05-3rdQtr	FY05-4thQtr	FY06-1stQtr	FY06-2ndQtr	FY06-3rdQtr	FY06-4thQtr	FY07-1stQtr	FY07-2ndQtr	FY07-3rdQtr	FY07-4thQtr	FY08-1stQtr	FY08-2ndQtr
Initiated	5	10	15	0	2	4	8	3	2	4	0	3
Discharges	10	18	17	3	9	13	15	15	4	7	0	3
Percent	50.0%	55.6%	88.2%	0.0%	22.2%	30.8%	53.3%	20.0%	50.0%	57.1%	0.0%	100.0%

Systemwide	FY05-3rdQtr	FY05-4thQtr	FY06-1stQtr	FY06-2ndQtr	FY06-3rdQtr	FY06-4thQtr	FY07-1stQtr	FY07-2ndQtr	FY07-3rdQtr	FY07-4thQtr	FY08-1stQtr	FY08-2ndQtr
Initiated	214	229	175	188	158	146	166	180	160	199	177	131
Discharges	358	321	252	277	250	271	273	308	304	375	308	239
Percent	59.8%	71.3%	69.4%	67.9%	63.2%	53.9%	60.8%	58.4%	52.6%	53.1%	57.5%	54.8%