

14-Day Follow Up-Trend Line

14-Day Follow Up after Discharge/Level of Care Change for the last Twelve Quarters
at (640) 12 & 12, INC.

Report Date : 2/5/2008

Data Last Updated on: 02/03/2008

Report Description:

Washington Circle Measures - <http://www.washingtoncircle.org>

Measure: 14-day follow up after discharge from Detox/Residential Treatment

The information provided in this report reflects the number of discharges/level of care changes, rather than the number of individuals. For example, if a person is discharged five times during the selected time period, the number of discharges would be five. To be included in this report, at least one service must be reported after admission. Also, when an episode includes more than one service reported under multiple contract sources, the episode will be counted under each contract source, but will only be counted once under the 'All Contract Sources' or 'All Substance Abuse Contract Sources (PPMR)' report.

DEFINITIONS:

Excluded: Individuals are excluded from this measure for one or more of the following reasons:

- a. Dependent or co-dependent (Primary Presenting Problem Codes: 745, 746, 747, 748, 749, 750, 751)
- b. Discharge type is code 68 (Death) or code 65 (Incarcerated)
- c. Outpatient or Halfway House discharges (measure is for Residential Treatment and Detox only)

No Follow Up: Discharge/Level of Care Change did not result in an additional service in a lower level of care within 14 days at any ODMHSAS agency.

Follow Up: Discharge/Level of Care Change did result in a follow up service with 14 days at a ODMHSAS facility in a lower level of care. Service can be any type of mental health or substance abuse service except crisis.

Discharge: Individual leaves treatment at that agency.

Level of Care Change: Individual is moving from either detox, residential treatment, halfway house or outpatient to another level of care within an agency.

Systemwide: Represents all ODMHSAS-contracted and operated facilities which have that level of care and contract source.

All Substance Abuse Contract Sources (PPMR): Includes the following contract source codes: 02, 03, 17, 20, 21, 22, 23, 27, 29, 41, 44, 49, 54, 61 and 70. These contract sources are included in the Substance Abuse Provider Performance Management Report.

All Contract Sources: All contract sources which this agency reports.

Notes:

Data for this report are only updated by ODMHSAS staff at intervals. If the "Data Last Updated on:" is more than two weeks past, please contact Mark A. Reynolds at mreynolds@odmhsas.org or (405) 522-3824.

Discharge Codes:	<u>Planned</u>	60 - Completed Treatment	<u>Unplanned</u>	62 - Left ACA/90 Days	<u>Other</u>	63 - Moved
		61 - Completed Court Treatment		66 - Broke Rules		64 - Transferred to another treatment facility
		40 - Level of Care Change		67 - AWOL		65 - Incarcerated
				70 - Discharge Due to Treatment Incompatibility		68 - Death
				92 - No service in 180 Days (auto-discharge)		69 - Failed to begin Treatment

14-Day Follow Up-Trend Line

14-Day Follow Up after Discharge/Level of Care Change for the last Twelve Quarters

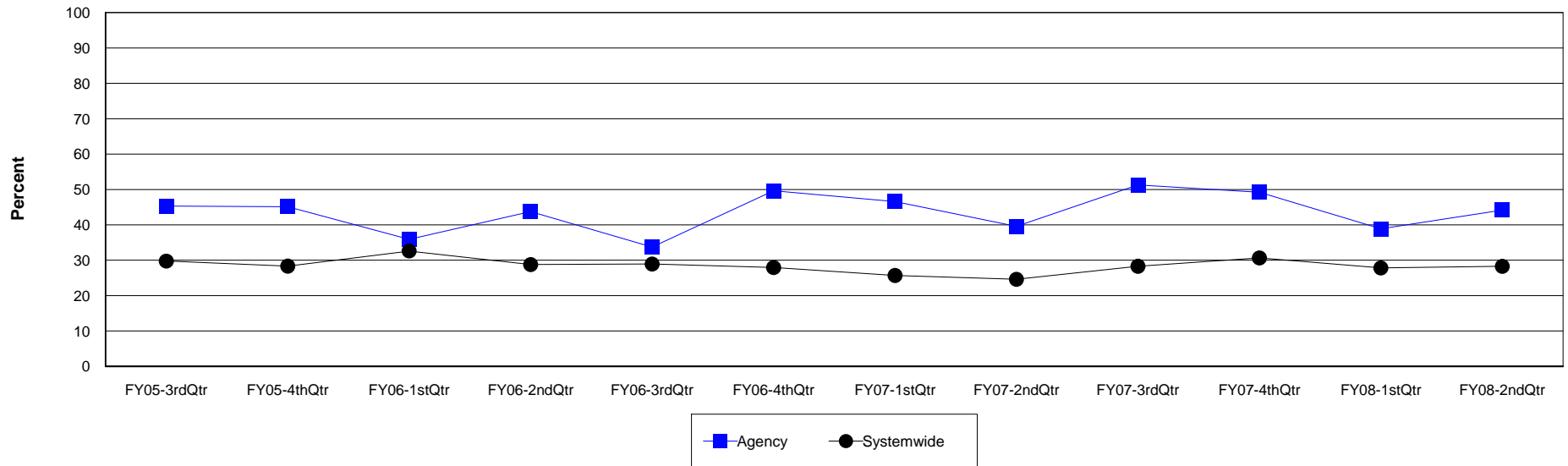
Agency: (640) 12 & 12, INC.

Level of Care: Detox

Contract Source: All Substance Abuse Contract Sources (PPMR)

Age Group: Adults (18+)

14-Day Follow Up at 12 & 12, INC.



Agency	FY05-3rdQtr	FY05-4thQtr	FY06-1stQtr	FY06-2ndQtr	FY06-3rdQtr	FY06-4thQtr	FY07-1stQtr	FY07-2ndQtr	FY07-3rdQtr	FY07-4thQtr	FY08-1stQtr	FY08-2ndQtr
Follow Up	63	65	56	70	55	66	75	57	60	30	28	53
Discharges	139	144	156	160	163	133	161	144	117	61	72	120
Percent	45.3%	45.1%	35.9%	43.8%	33.7%	49.6%	46.6%	39.6%	51.3%	49.2%	38.9%	44.2%

Systemwide	FY05-3rdQtr	FY05-4thQtr	FY06-1stQtr	FY06-2ndQtr	FY06-3rdQtr	FY06-4thQtr	FY07-1stQtr	FY07-2ndQtr	FY07-3rdQtr	FY07-4thQtr	FY08-1stQtr	FY08-2ndQtr
Follow Up	380	369	302	227	245	219	219	192	215	222	195	233
Discharges	1,277	1,302	926	789	847	784	852	780	760	724	701	824
Percent	29.8%	28.3%	32.6%	28.8%	28.9%	27.9%	25.7%	24.6%	28.3%	30.7%	27.8%	28.3%

14-Day Follow Up-Trend Line

14-Day Follow Up after Discharge/Level of Care Change for the last Twelve Quarters

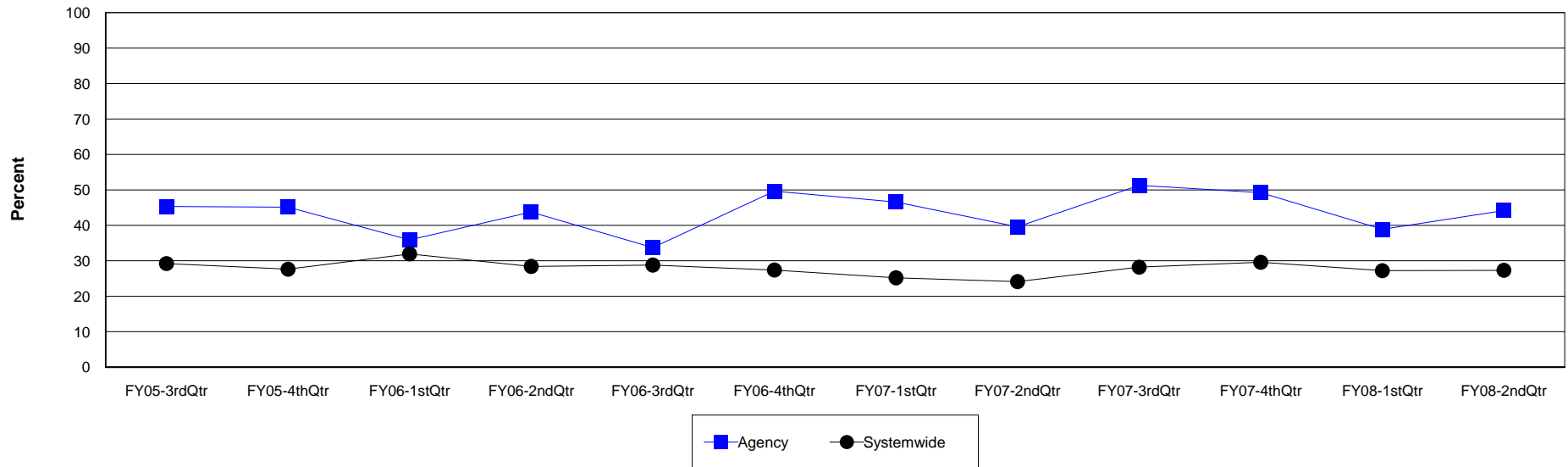
Agency: (640) 12 & 12, INC.

Level of Care: Detox

Contract Source: All Contract Sources

Age Group: Adults (18+)

14-Day Follow Up at 12 & 12, INC.



Agency	FY05-3rdQtr	FY05-4thQtr	FY06-1stQtr	FY06-2ndQtr	FY06-3rdQtr	FY06-4thQtr	FY07-1stQtr	FY07-2ndQtr	FY07-3rdQtr	FY07-4thQtr	FY08-1stQtr	FY08-2ndQtr
Follow Up	63	65	56	70	55	66	75	57	60	30	28	53
Discharges	139	144	156	160	163	133	161	144	117	61	72	120
Percent	45.3%	45.1%	35.9%	43.8%	33.7%	49.6%	46.6%	39.6%	51.3%	49.2%	38.9%	44.2%

Systemwide	FY05-3rdQtr	FY05-4thQtr	FY06-1stQtr	FY06-2ndQtr	FY06-3rdQtr	FY06-4thQtr	FY07-1stQtr	FY07-2ndQtr	FY07-3rdQtr	FY07-4thQtr	FY08-1stQtr	FY08-2ndQtr
Follow Up	369	355	292	221	242	212	213	185	214	211	188	221
Discharges	1,263	1,285	914	778	841	774	845	766	759	713	691	809
Percent	29.2%	27.6%	31.9%	28.4%	28.8%	27.4%	25.2%	24.2%	28.2%	29.6%	27.2%	27.3%

14-Day Follow Up-Trend Line

14-Day Follow Up after Discharge/Level of Care Change for the last Twelve Quarters

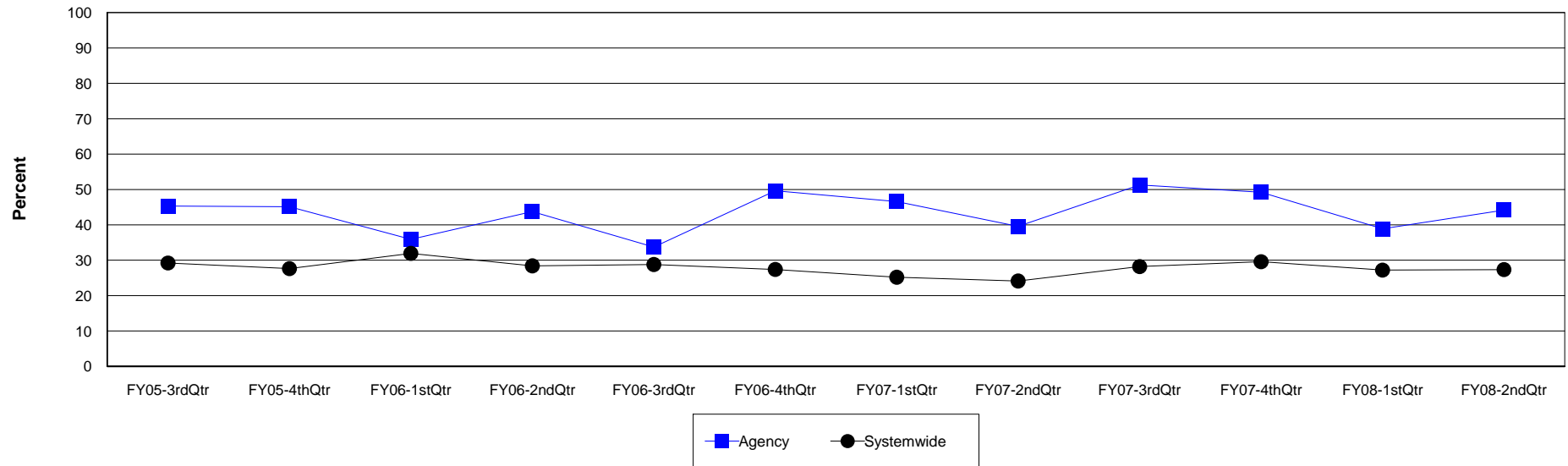
Agency: (640) 12 & 12, INC.

Level of Care: Detox

Contract Source: (02) ALCOHOL/DRUG

Age Group: Adults (18+)

14-Day Follow Up at 12 & 12, INC.



Agency	FY05-3rdQtr	FY05-4thQtr	FY06-1stQtr	FY06-2ndQtr	FY06-3rdQtr	FY06-4thQtr	FY07-1stQtr	FY07-2ndQtr	FY07-3rdQtr	FY07-4thQtr	FY08-1stQtr	FY08-2ndQtr
Follow Up	63	65	56	70	55	66	75	57	60	30	28	53
Discharges	139	144	156	160	163	133	161	144	117	61	72	120
Percent	45.3%	45.1%	35.9%	43.8%	33.7%	49.6%	46.6%	39.6%	51.3%	49.2%	38.9%	44.2%

Systemwide	FY05-3rdQtr	FY05-4thQtr	FY06-1stQtr	FY06-2ndQtr	FY06-3rdQtr	FY06-4thQtr	FY07-1stQtr	FY07-2ndQtr	FY07-3rdQtr	FY07-4thQtr	FY08-1stQtr	FY08-2ndQtr
Follow Up	369	355	292	221	242	212	213	185	214	211	188	221
Discharges	1,263	1,285	914	778	841	774	845	766	759	713	691	808
Percent	29.2%	27.6%	31.9%	28.4%	28.8%	27.4%	25.2%	24.2%	28.2%	29.6%	27.2%	27.4%

14-Day Follow Up-Trend Line

14-Day Follow Up after Discharge/Level of Care Change for the last Twelve Quarters

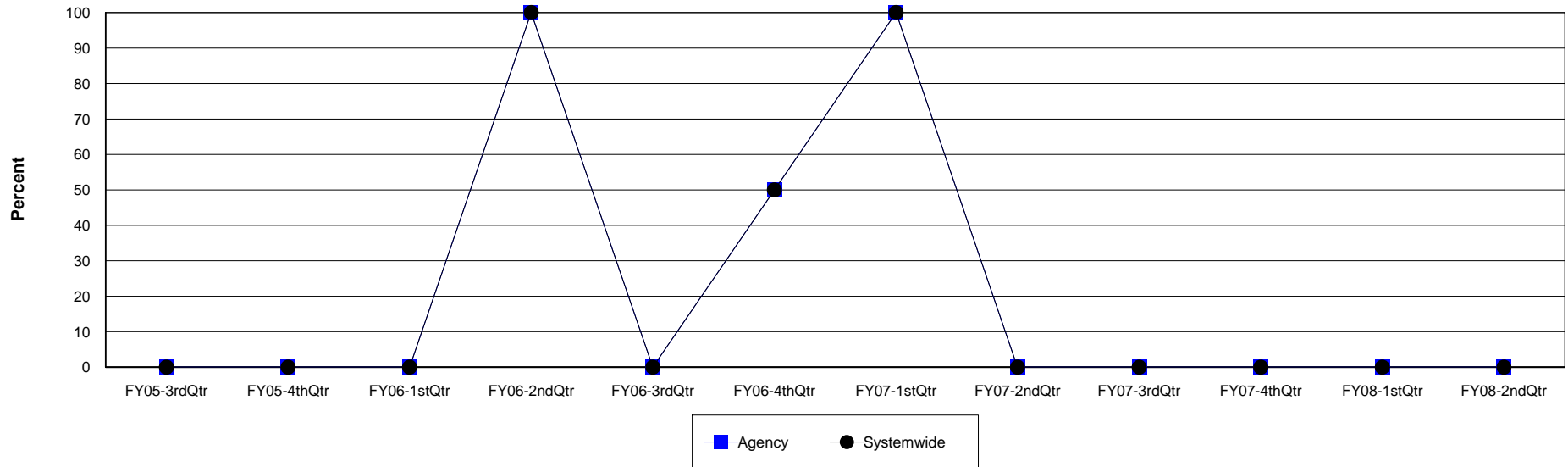
Agency: (640) 12 & 12, INC.

Level of Care: Detox

Contract Source: (21) ALCOHOL/DRUG SPECIALIZED PROGRAMS

Age Group: Adults (18+)

14-Day Follow Up at 12 & 12, INC.



Agency	FY05-3rdQtr	FY05-4thQtr	FY06-1stQtr	FY06-2ndQtr	FY06-3rdQtr	FY06-4thQtr	FY07-1stQtr	FY07-2ndQtr	FY07-3rdQtr	FY07-4thQtr	FY08-1stQtr	FY08-2ndQtr
Follow Up	0	0	0	1	0	1	1	0	0	0	0	0
Discharges	1	1	0	1	0	2	1	0	0	0	0	0
Percent	0.0%	0.0%	0.0%	100.0%	0.0%	50.0%	100.0%	0.0%	0.0%	0.0%	0.0%	0.0%

Systemwide	FY05-3rdQtr	FY05-4thQtr	FY06-1stQtr	FY06-2ndQtr	FY06-3rdQtr	FY06-4thQtr	FY07-1stQtr	FY07-2ndQtr	FY07-3rdQtr	FY07-4thQtr	FY08-1stQtr	FY08-2ndQtr
Follow Up	0	0	0	1	0	1	1	0	0	0	0	0
Discharges	1	1	0	1	0	2	1	0	0	0	0	0
Percent	0.0%	0.0%	0.0%	100.0%	0.0%	50.0%	100.0%	0.0%	0.0%	0.0%	0.0%	0.0%

14-Day Follow Up-Trend Line

14-Day Follow Up after Discharge/Level of Care Change for the last Twelve Quarters

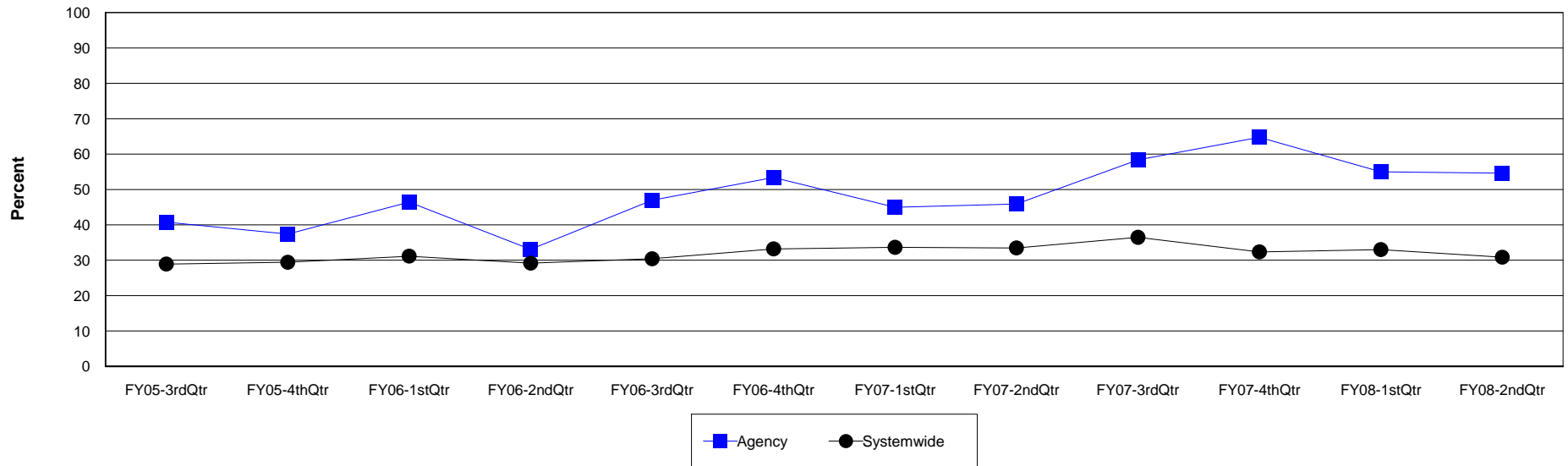
Agency: (640) 12 & 12, INC.

Level of Care: Residential Treatment

Contract Source: All Substance Abuse Contract Sources (PPMR)

Age Group: Adults (18+)

14-Day Follow Up at 12 & 12, INC.



Agency	FY05-3rdQtr	FY05-4thQtr	FY06-1stQtr	FY06-2ndQtr	FY06-3rdQtr	FY06-4thQtr	FY07-1stQtr	FY07-2ndQtr	FY07-3rdQtr	FY07-4thQtr	FY08-1stQtr	FY08-2ndQtr
Follow Up	53	46	65	45	46	55	58	50	77	79	66	83
Discharges	130	123	140	136	98	103	129	109	132	122	120	152
Percent	40.8%	37.4%	46.4%	33.1%	46.9%	53.4%	45.0%	45.9%	58.3%	64.8%	55.0%	54.6%

Systemwide	FY05-3rdQtr	FY05-4thQtr	FY06-1stQtr	FY06-2ndQtr	FY06-3rdQtr	FY06-4thQtr	FY07-1stQtr	FY07-2ndQtr	FY07-3rdQtr	FY07-4thQtr	FY08-1stQtr	FY08-2ndQtr
Follow Up	255	279	277	279	275	285	302	292	313	314	308	278
Discharges	882	948	889	956	904	858	897	872	858	970	933	901
Percent	28.9%	29.4%	31.2%	29.2%	30.4%	33.2%	33.7%	33.5%	36.5%	32.4%	33.0%	30.9%

14-Day Follow Up-Trend Line

14-Day Follow Up after Discharge/Level of Care Change for the last Twelve Quarters

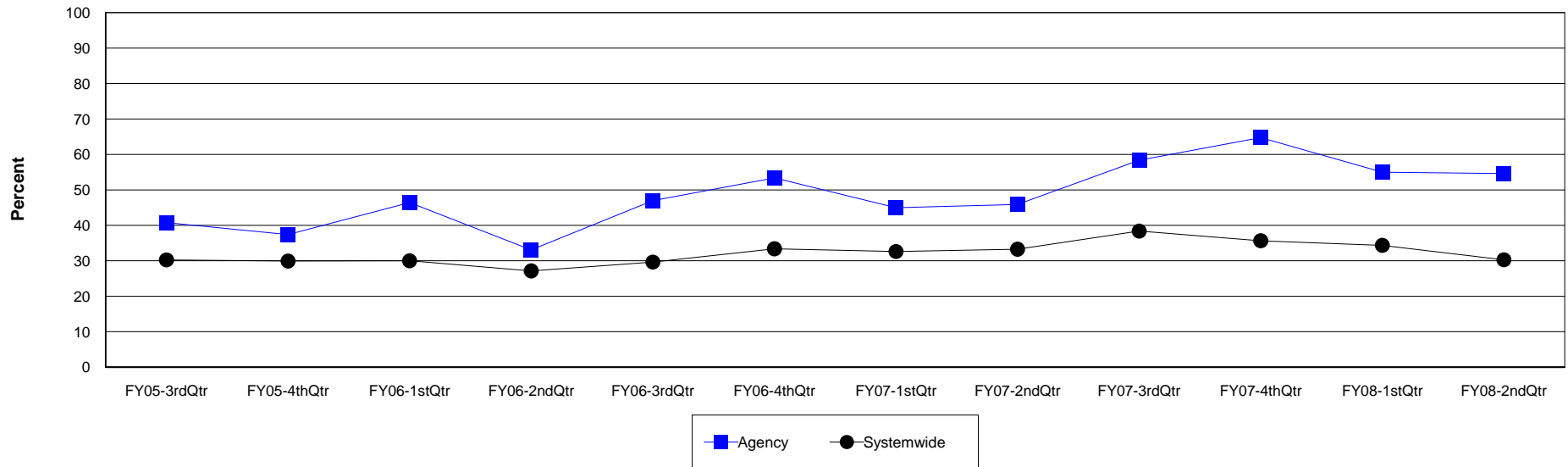
Agency: (640) 12 & 12, INC.

Level of Care: Residential Treatment

Contract Source: All Contract Sources

Age Group: Adults (18+)

14-Day Follow Up at 12 & 12, INC.



Agency	FY05-3rdQtr	FY05-4thQtr	FY06-1stQtr	FY06-2ndQtr	FY06-3rdQtr	FY06-4thQtr	FY07-1stQtr	FY07-2ndQtr	FY07-3rdQtr	FY07-4thQtr	FY08-1stQtr	FY08-2ndQtr
Follow Up	53	46	65	45	46	55	58	50	77	79	66	83
Discharges	130	123	140	136	98	103	129	109	132	122	120	152
Percent	40.8%	37.4%	46.4%	33.1%	46.9%	53.4%	45.0%	45.9%	58.3%	64.8%	55.0%	54.6%

Systemwide	FY05-3rdQtr	FY05-4thQtr	FY06-1stQtr	FY06-2ndQtr	FY06-3rdQtr	FY06-4thQtr	FY07-1stQtr	FY07-2ndQtr	FY07-3rdQtr	FY07-4thQtr	FY08-1stQtr	FY08-2ndQtr
Follow Up	219	226	204	202	195	208	227	214	243	256	245	229
Discharges	724	755	680	744	658	623	696	643	633	718	713	756
Percent	30.2%	29.9%	30.0%	27.2%	29.6%	33.4%	32.6%	33.3%	38.4%	35.7%	34.4%	30.3%

14-Day Follow Up-Trend Line

14-Day Follow Up after Discharge/Level of Care Change for the last Twelve Quarters

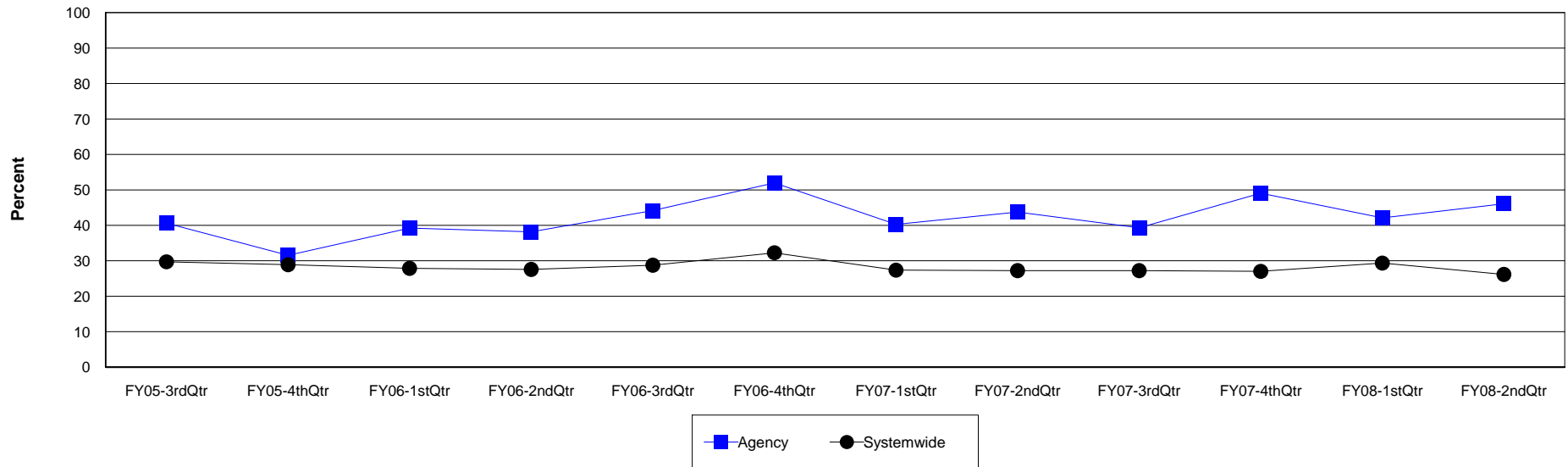
Agency: (640) 12 & 12, INC.

Level of Care: Residential Treatment

Contract Source: (02) ALCOHOL/DRUG

Age Group: Adults (18+)

14-Day Follow Up at 12 & 12, INC.



Agency	FY05-3rdQtr	FY05-4thQtr	FY06-1stQtr	FY06-2ndQtr	FY06-3rdQtr	FY06-4thQtr	FY07-1stQtr	FY07-2ndQtr	FY07-3rdQtr	FY07-4thQtr	FY08-1stQtr	FY08-2ndQtr
Follow Up	39	30	40	37	34	39	33	21	22	26	24	41
Discharges	96	95	102	97	77	75	82	48	56	53	57	89
Percent	40.6%	31.6%	39.2%	38.1%	44.2%	52.0%	40.2%	43.8%	39.3%	49.1%	42.1%	46.1%

Systemwide	FY05-3rdQtr	FY05-4thQtr	FY06-1stQtr	FY06-2ndQtr	FY06-3rdQtr	FY06-4thQtr	FY07-1stQtr	FY07-2ndQtr	FY07-3rdQtr	FY07-4thQtr	FY08-1stQtr	FY08-2ndQtr
Follow Up	205	210	179	194	182	192	162	135	131	157	182	174
Discharges	690	727	642	704	633	595	592	496	481	581	620	665
Percent	29.7%	28.9%	27.9%	27.6%	28.8%	32.3%	27.4%	27.2%	27.2%	27.0%	29.4%	26.2%

14-Day Follow Up-Trend Line

14-Day Follow Up after Discharge/Level of Care Change for the last Twelve Quarters

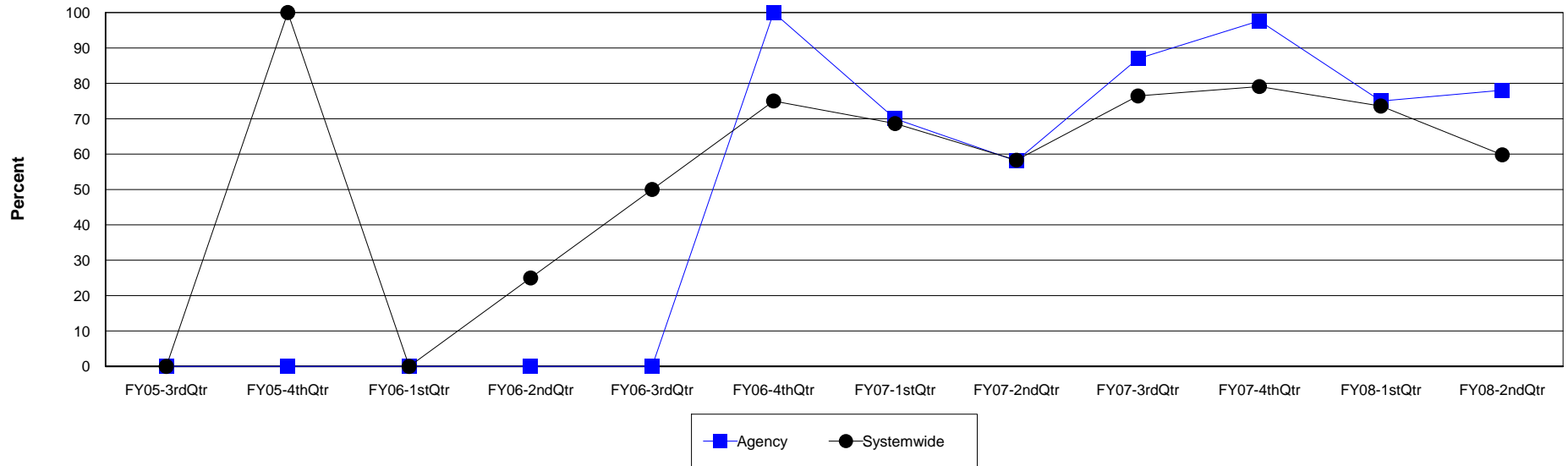
Agency: (640) 12 & 12, INC.

Level of Care: Residential Treatment

Contract Source: (20) DRUG COURT

Age Group: Adults (18+)

14-Day Follow Up at 12 & 12, INC.



Agency	FY05-3rdQtr	FY05-4thQtr	FY06-1stQtr	FY06-2ndQtr	FY06-3rdQtr	FY06-4thQtr	FY07-1stQtr	FY07-2ndQtr	FY07-3rdQtr	FY07-4thQtr	FY08-1stQtr	FY08-2ndQtr
Follow Up	0	0	0	0	0	1	21	18	40	42	36	32
Discharges	0	0	0	0	0	1	30	31	46	43	48	41
Percent	0.0%	0.0%	0.0%	0.0%	0.0%	100.0%	70.0%	58.1%	87.0%	97.7%	75.0%	78.0%

Systemwide	FY05-3rdQtr	FY05-4thQtr	FY06-1stQtr	FY06-2ndQtr	FY06-3rdQtr	FY06-4thQtr	FY07-1stQtr	FY07-2ndQtr	FY07-3rdQtr	FY07-4thQtr	FY08-1stQtr	FY08-2ndQtr
Follow Up	0	1	0	1	3	3	94	88	107	121	78	55
Discharges	0	1	1	4	6	4	137	151	140	153	106	92
Percent	0.0%	100.0%	0.0%	25.0%	50.0%	75.0%	68.6%	58.3%	76.4%	79.1%	73.6%	59.8%

14-Day Follow Up-Trend Line

14-Day Follow Up after Discharge/Level of Care Change for the last Twelve Quarters

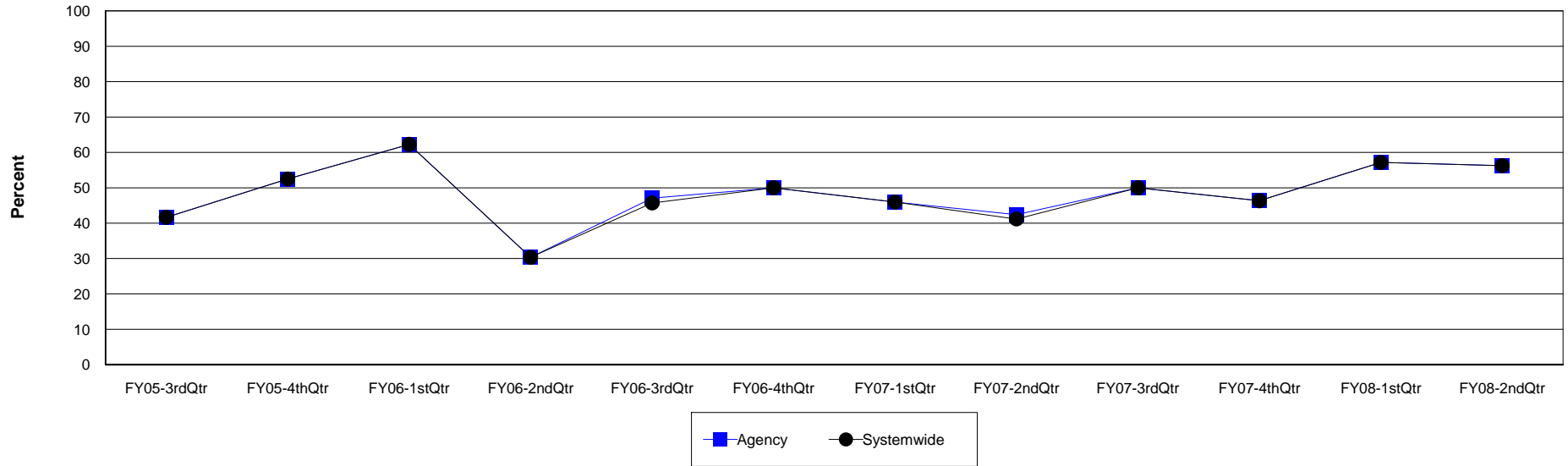
Agency: (640) 12 & 12, INC.

Level of Care: Residential Treatment

Contract Source: (21) ALCOHOL/DRUG SPECIALIZED PROGRAMS

Age Group: Adults (18+)

14-Day Follow Up at 12 & 12, INC.



Agency	FY05-3rdQtr	FY05-4thQtr	FY06-1stQtr	FY06-2ndQtr	FY06-3rdQtr	FY06-4thQtr	FY07-1stQtr	FY07-2ndQtr	FY07-3rdQtr	FY07-4thQtr	FY08-1stQtr	FY08-2ndQtr
Follow Up	15	21	33	17	16	20	17	14	20	19	24	27
Discharges	36	40	53	56	34	40	37	33	40	41	42	48
Percent	41.7%	52.5%	62.3%	30.4%	47.1%	50.0%	45.9%	42.4%	50.0%	46.3%	57.1%	56.3%

Systemwide	FY05-3rdQtr	FY05-4thQtr	FY06-1stQtr	FY06-2ndQtr	FY06-3rdQtr	FY06-4thQtr	FY07-1stQtr	FY07-2ndQtr	FY07-3rdQtr	FY07-4thQtr	FY08-1stQtr	FY08-2ndQtr
Follow Up	15	21	33	17	16	20	17	14	20	19	24	27
Discharges	36	40	53	56	35	40	37	34	40	41	42	48
Percent	41.7%	52.5%	62.3%	30.4%	45.7%	50.0%	45.9%	41.2%	50.0%	46.3%	57.1%	56.3%

14-Day Follow Up-Trend Line

14-Day Follow Up after Discharge/Level of Care Change for the last Twelve Quarters

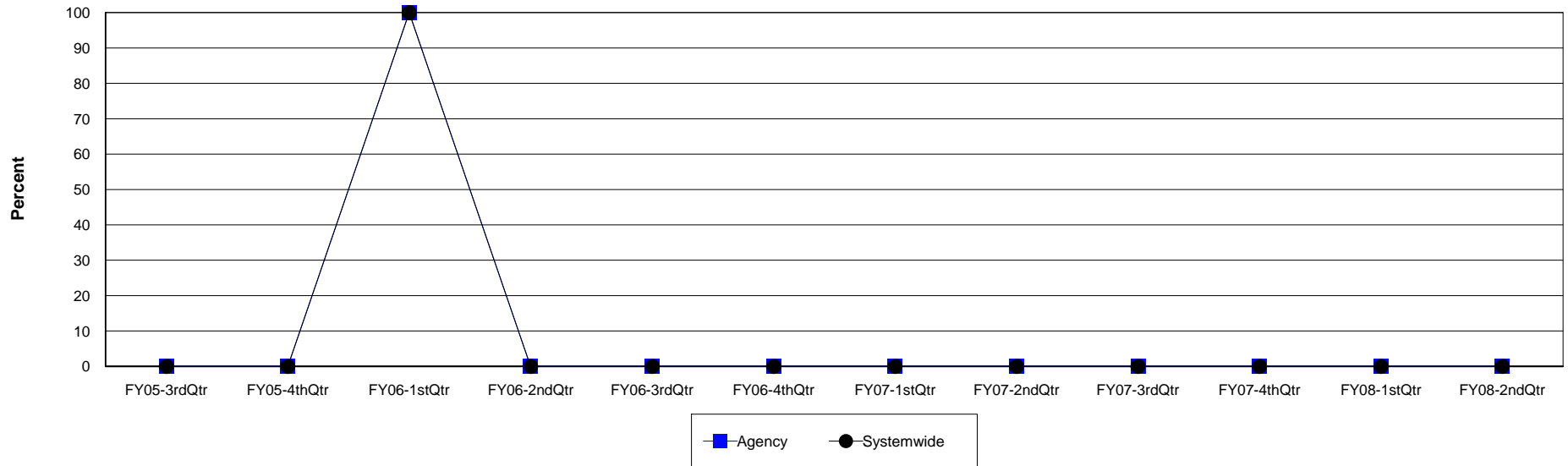
Agency: (640) 12 & 12, INC.

Level of Care: Detox

Contract Source: All Substance Abuse Contract Sources (PPMR)

Age Group: Children (0-17)

14-Day Follow Up at 12 & 12, INC.



Agency	FY05-3rdQtr	FY05-4thQtr	FY06-1stQtr	FY06-2ndQtr	FY06-3rdQtr	FY06-4thQtr	FY07-1stQtr	FY07-2ndQtr	FY07-3rdQtr	FY07-4thQtr	FY08-1stQtr	FY08-2ndQtr
Follow Up	0	0	1	0	0	0	0	0	0	0	0	0
Discharges	0	0	1	0	0	0	0	0	0	0	0	0
Percent	0.0%	0.0%	100.0%	0.0%	0.0%	0.0%	0.0%	0.0%	0.0%	0.0%	0.0%	0.0%

Systemwide	FY05-3rdQtr	FY05-4thQtr	FY06-1stQtr	FY06-2ndQtr	FY06-3rdQtr	FY06-4thQtr	FY07-1stQtr	FY07-2ndQtr	FY07-3rdQtr	FY07-4thQtr	FY08-1stQtr	FY08-2ndQtr
Follow Up	0	0	1	0	0	0	0	0	0	0	0	0
Discharges	1	4	1	0	0	0	0	0	0	0	0	0
Percent	0.0%	0.0%	100.0%	0.0%	0.0%	0.0%	0.0%	0.0%	0.0%	0.0%	0.0%	0.0%

14-Day Follow Up-Trend Line

14-Day Follow Up after Discharge/Level of Care Change for the last Twelve Quarters

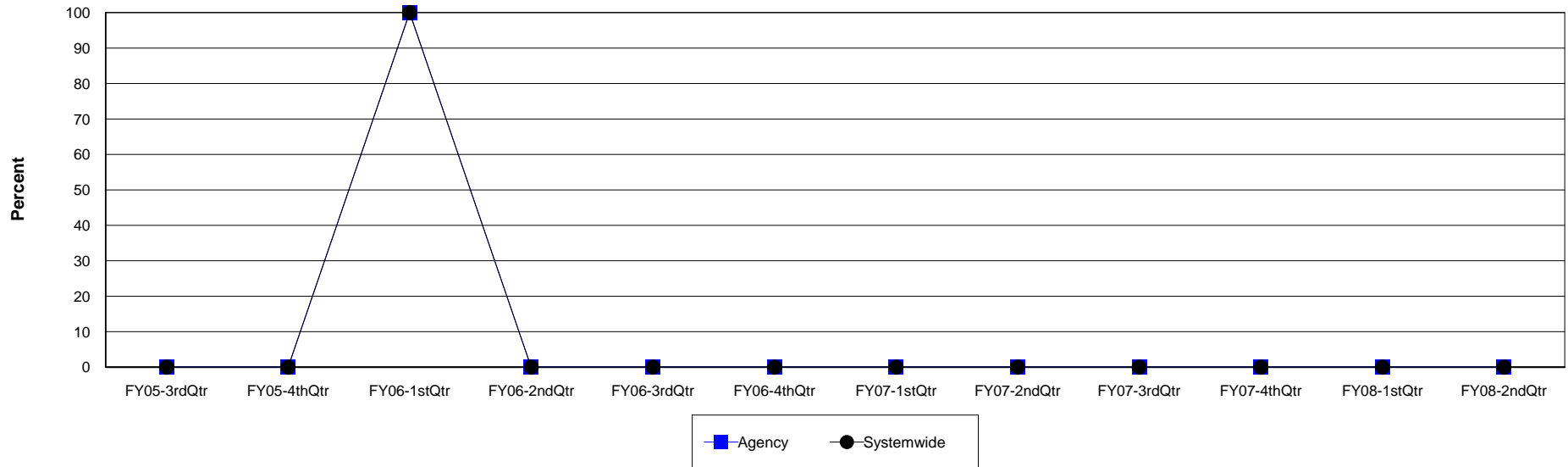
Agency: (640) 12 & 12, INC.

Level of Care: Detox

Contract Source: All Contract Sources

Age Group: Children (0-17)

14-Day Follow Up at 12 & 12, INC.



Agency	FY05-3rdQtr	FY05-4thQtr	FY06-1stQtr	FY06-2ndQtr	FY06-3rdQtr	FY06-4thQtr	FY07-1stQtr	FY07-2ndQtr	FY07-3rdQtr	FY07-4thQtr	FY08-1stQtr	FY08-2ndQtr
Follow Up	0	0	1	0	0	0	0	0	0	0	0	0
Discharges	0	0	1	0	0	0	0	0	0	0	0	0
Percent	0.0%	0.0%	100.0%	0.0%	0.0%	0.0%	0.0%	0.0%	0.0%	0.0%	0.0%	0.0%

Systemwide	FY05-3rdQtr	FY05-4thQtr	FY06-1stQtr	FY06-2ndQtr	FY06-3rdQtr	FY06-4thQtr	FY07-1stQtr	FY07-2ndQtr	FY07-3rdQtr	FY07-4thQtr	FY08-1stQtr	FY08-2ndQtr
Follow Up	0	0	1	0	0	0	0	0	0	0	0	0
Discharges	1	4	1	0	0	0	0	0	0	0	0	0
Percent	0.0%	0.0%	100.0%	0.0%	0.0%	0.0%	0.0%	0.0%	0.0%	0.0%	0.0%	0.0%

14-Day Follow Up-Trend Line

14-Day Follow Up after Discharge/Level of Care Change for the last Twelve Quarters

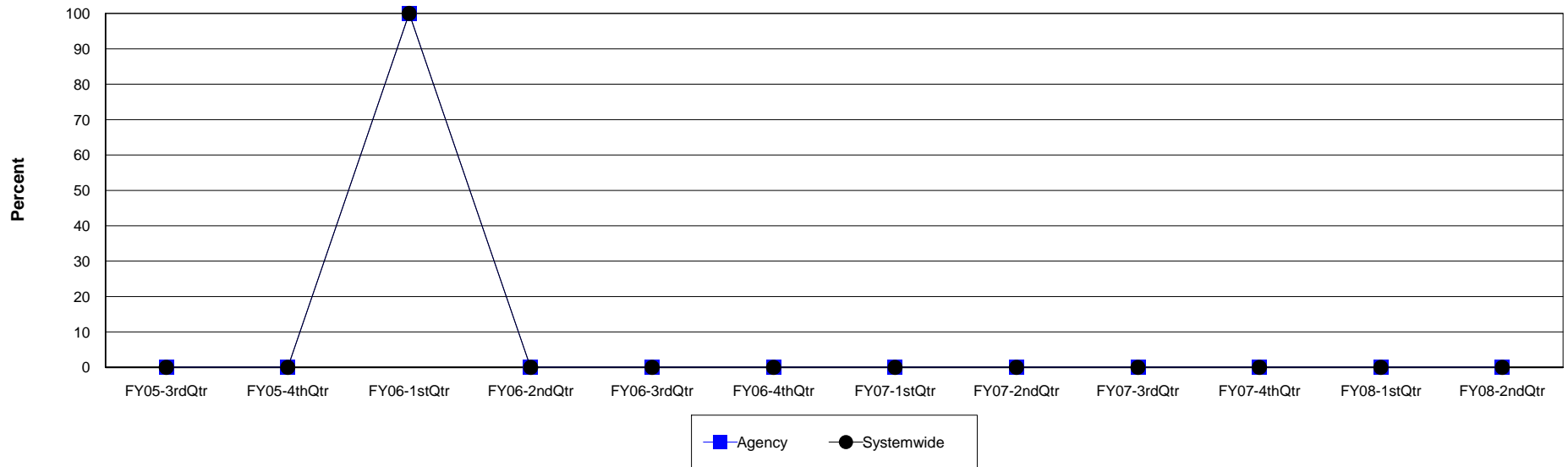
Agency: (640) 12 & 12, INC.

Level of Care: Detox

Contract Source: (02) ALCOHOL/DRUG

Age Group: Children (0-17)

14-Day Follow Up at 12 & 12, INC.



Agency	FY05-3rdQtr	FY05-4thQtr	FY06-1stQtr	FY06-2ndQtr	FY06-3rdQtr	FY06-4thQtr	FY07-1stQtr	FY07-2ndQtr	FY07-3rdQtr	FY07-4thQtr	FY08-1stQtr	FY08-2ndQtr
Follow Up	0	0	1	0	0	0	0	0	0	0	0	0
Discharges	0	0	1	0	0	0	0	0	0	0	0	0
Percent	0.0%	0.0%	100.0%	0.0%	0.0%	0.0%	0.0%	0.0%	0.0%	0.0%	0.0%	0.0%

Systemwide	FY05-3rdQtr	FY05-4thQtr	FY06-1stQtr	FY06-2ndQtr	FY06-3rdQtr	FY06-4thQtr	FY07-1stQtr	FY07-2ndQtr	FY07-3rdQtr	FY07-4thQtr	FY08-1stQtr	FY08-2ndQtr
Follow Up	0	0	1	0	0	0	0	0	0	0	0	0
Discharges	1	4	1	0	0	0	0	0	0	0	0	0
Percent	0.0%	0.0%	100.0%	0.0%	0.0%	0.0%	0.0%	0.0%	0.0%	0.0%	0.0%	0.0%

14-Day Follow Up-Trend Line

14-Day Follow Up after Discharge/Level of Care Change for the last Twelve Quarters

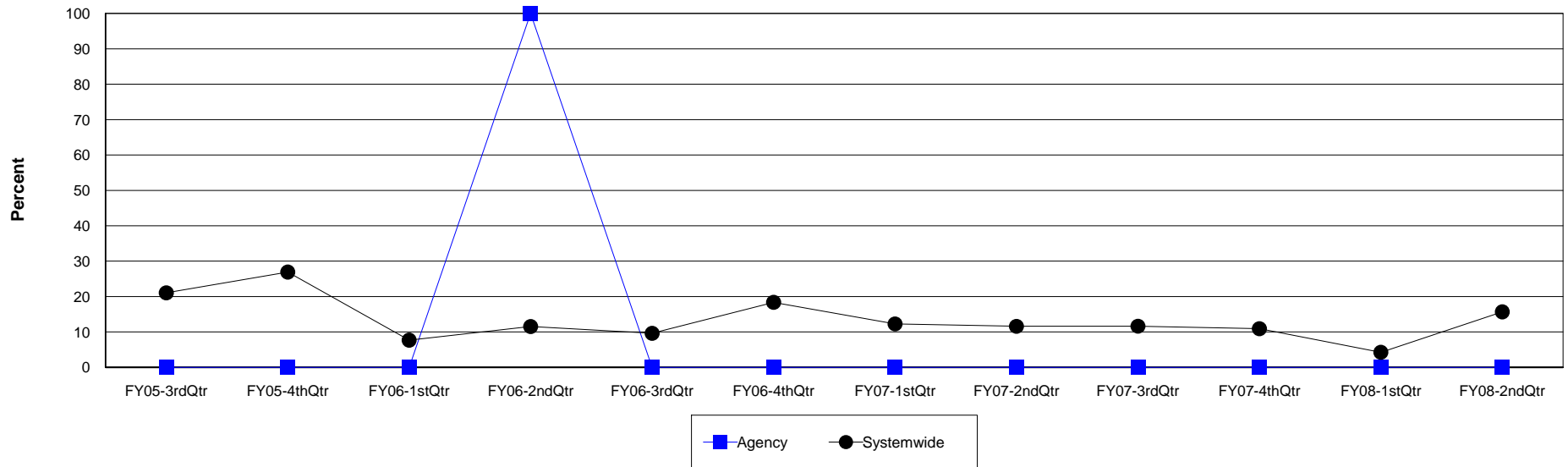
Agency: (640) 12 & 12, INC.

Level of Care: Residential Treatment

Contract Source: All Substance Abuse Contract Sources (PPMR)

Age Group: Children (0-17)

14-Day Follow Up at 12 & 12, INC.



Agency	FY05-3rdQtr	FY05-4thQtr	FY06-1stQtr	FY06-2ndQtr	FY06-3rdQtr	FY06-4thQtr	FY07-1stQtr	FY07-2ndQtr	FY07-3rdQtr	FY07-4thQtr	FY08-1stQtr	FY08-2ndQtr
Follow Up	0	0	0	1	0	0	0	0	0	0	0	0
Discharges	0	0	0	1	0	0	0	0	0	0	0	0
Percent	0.0%	0.0%	0.0%	100.0%	0.0%	0.0%	0.0%	0.0%	0.0%	0.0%	0.0%	0.0%

Systemwide	FY05-3rdQtr	FY05-4thQtr	FY06-1stQtr	FY06-2ndQtr	FY06-3rdQtr	FY06-4thQtr	FY07-1stQtr	FY07-2ndQtr	FY07-3rdQtr	FY07-4thQtr	FY08-1stQtr	FY08-2ndQtr
Follow Up	4	7	3	6	5	9	7	8	5	6	2	8
Discharges	19	26	39	52	52	49	57	69	43	55	47	51
Percent	21.1%	26.9%	7.7%	11.5%	9.6%	18.4%	12.3%	11.6%	11.6%	10.9%	4.3%	15.7%

14-Day Follow Up-Trend Line

14-Day Follow Up after Discharge/Level of Care Change for the last Twelve Quarters

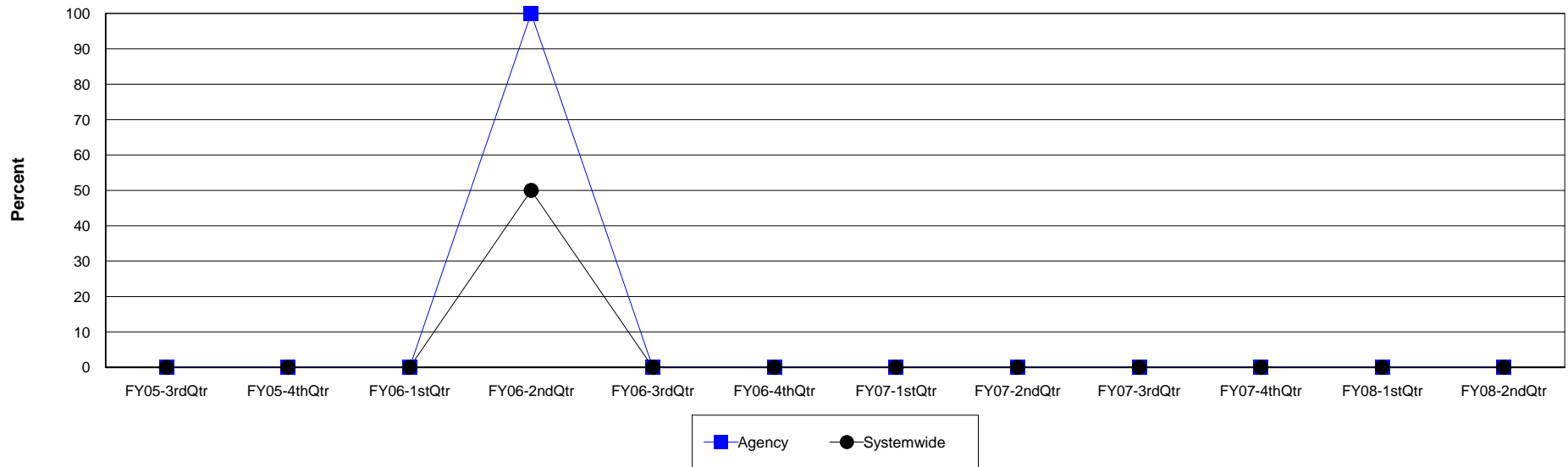
Agency: (640) 12 & 12, INC.

Level of Care: Residential Treatment

Contract Source: All Contract Sources

Age Group: Children (0-17)

14-Day Follow Up at 12 & 12, INC.



Agency	FY05-3rdQtr	FY05-4thQtr	FY06-1stQtr	FY06-2ndQtr	FY06-3rdQtr	FY06-4thQtr	FY07-1stQtr	FY07-2ndQtr	FY07-3rdQtr	FY07-4thQtr	FY08-1stQtr	FY08-2ndQtr
Follow Up	0	0	0	1	0	0	0	0	0	0	0	0
Discharges	0	0	0	1	0	0	0	0	0	0	0	0
Percent	0.0%	0.0%	0.0%	100.0%	0.0%	0.0%	0.0%	0.0%	0.0%	0.0%	0.0%	0.0%

Systemwide	FY05-3rdQtr	FY05-4thQtr	FY06-1stQtr	FY06-2ndQtr	FY06-3rdQtr	FY06-4thQtr	FY07-1stQtr	FY07-2ndQtr	FY07-3rdQtr	FY07-4thQtr	FY08-1stQtr	FY08-2ndQtr
Follow Up	0	0	0	1	0	0	0	0	0	0	0	0
Discharges	0	0	0	2	0	0	1	0	0	0	0	0
Percent	0.0%	0.0%	0.0%	50.0%	0.0%	0.0%	0.0%	0.0%	0.0%	0.0%	0.0%	0.0%

14-Day Follow Up-Trend Line

14-Day Follow Up after Discharge/Level of Care Change for the last Twelve Quarters

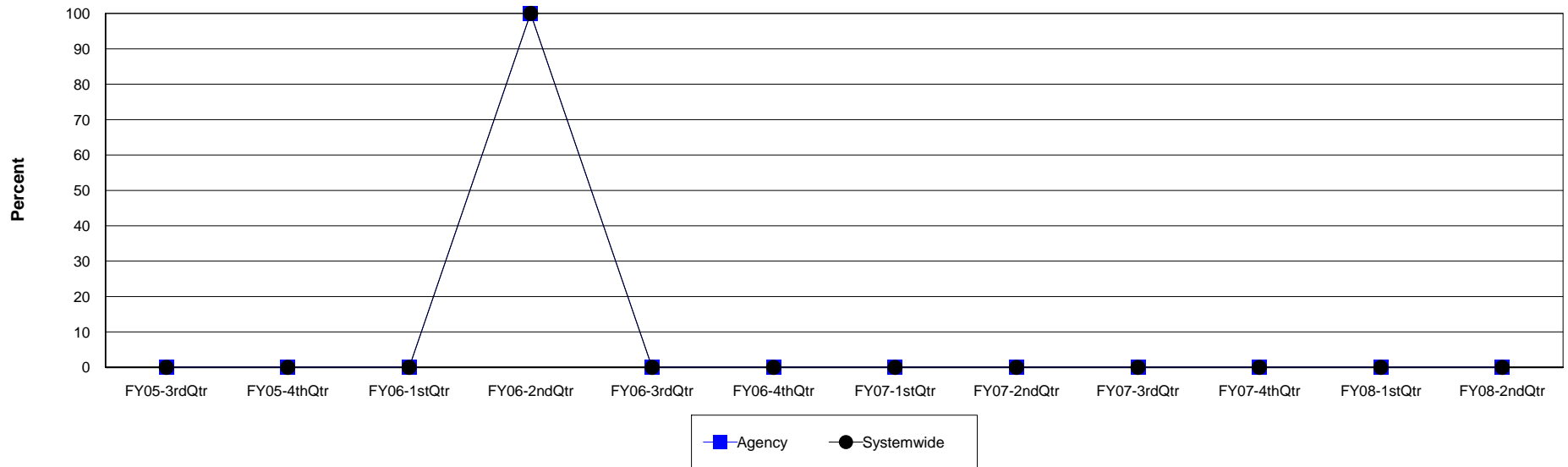
Agency: (640) 12 & 12, INC.

Level of Care: Residential Treatment

Contract Source: (21) ALCOHOL/DRUG SPECIALIZED PROGRAMS

Age Group: Children (0-17)

14-Day Follow Up at 12 & 12, INC.



Agency	FY05-3rdQtr	FY05-4thQtr	FY06-1stQtr	FY06-2ndQtr	FY06-3rdQtr	FY06-4thQtr	FY07-1stQtr	FY07-2ndQtr	FY07-3rdQtr	FY07-4thQtr	FY08-1stQtr	FY08-2ndQtr
Follow Up	0	0	0	1	0	0	0	0	0	0	0	0
Discharges	0	0	0	1	0	0	0	0	0	0	0	0
Percent	0.0%	0.0%	0.0%	100.0%	0.0%	0.0%	0.0%	0.0%	0.0%	0.0%	0.0%	0.0%

Systemwide	FY05-3rdQtr	FY05-4thQtr	FY06-1stQtr	FY06-2ndQtr	FY06-3rdQtr	FY06-4thQtr	FY07-1stQtr	FY07-2ndQtr	FY07-3rdQtr	FY07-4thQtr	FY08-1stQtr	FY08-2ndQtr
Follow Up	0	0	0	1	0	0	0	0	0	0	0	0
Discharges	0	0	0	1	0	0	0	0	0	0	0	0
Percent	0.0%	0.0%	0.0%	100.0%	0.0%	0.0%	0.0%	0.0%	0.0%	0.0%	0.0%	0.0%