

14-Day Follow Up (Referred Only)-Trend Line

14-Day Follow Up (Referred) from Admission to Discharge/Level of Care Change for the last Twelve Quarters
at (640) 12 & 12, INC.

Report Date : 2/5/2008

Data Last Updated on: 02/03/2008

Report Description:

Washington Circle Measures - <http://www.washingtoncircle.org>

Measure: 14-day follow up after discharge from Detox/Residential Treatment (Referred to ODMHSAS facility)

The information provided in this report reflects the number of discharges/level of care changes, rather than the number of individuals. For example, if a person is discharged five times during the selected time period, the number of discharges would be five. To be included in this report, at least one service must be reported after admission. Also, when an episode includes more than one service reported under multiple contract sources, the episode will be counted under each contract source, but will only be counted once under the 'All Contract Sources' or 'All Substance Abuse Contract Sources (PPMR)' report.

DEFINITIONS:

Excluded: Individuals are excluded from this measure for one or more of the following reasons:

- Dependent or co-dependent (Primary Presenting Problem Codes: 745, 746, 747, 748, 749, 750, 751)
- Discharge type is code 68 (Death) or code 65 (Incarcerated)
- Outpatient or Halfway House discharges (measure is for Residential Treatment and Detox only)
- Discharges which were not referred to an ODMHSAS agency

No Follow Up: Discharge/Level of Care Change did not result in an additional service in a lower level of care within 14 days at any ODMHSAS agency.

Follow Up: Discharge/Level of Care Change did result in a follow up service with 14 days at a ODMHSAS facility in a lower level of care. Service can be any type of mental health or substance abuse service except crisis.

Discharge: Individual leaves treatment at that agency.

Level of Care Change: Individual is moving from either detox, residential treatment, halfway house or outpatient to another level of care within an agency.

Systemwide: Represents all ODMHSAS-contracted and operated facilities which have that level of care and contract source.

All Substance Abuse Contract Sources (PPMR): Includes the following contract source codes: 02, 03, 17, 20, 21, 22, 23, 27, 29, 41, 44, 49, 54, 61 and 70. These contract sources are included in the Substance Abuse Provider Performance Management Report.

All Contract Sources: All contract sources which this agency reports.

Notes:

Data for this report are only updated by ODMHSAS staff at intervals. If the "Data Last Updated on:" is more than two weeks past, please contact Mark A. Reynolds at mreynolds@odmhsas.org or (405) 522-3824.

Discharge Codes:	Planned	Unplanned	Other
	60 - Completed Treatment	62 - Left ACA/90 Days	63 - Moved
	61 - Completed Court Treatment	66 - Broke Rules	64 - Transferred to another treatment facility
	40 - Level of Care Change	67 - AWOL	65 - Incarcerated
		70 - Discharge Due to Treatment Incompatibility	68 - Death
		92 - No service in 180 Days (auto-discharge)	69 - Failed to begin Treatment

14-Day Follow Up (Referred Only)-Trend Line

14-Day Follow Up (Referred) after Discharge/Level of Care Change for the last Twelve Quarters

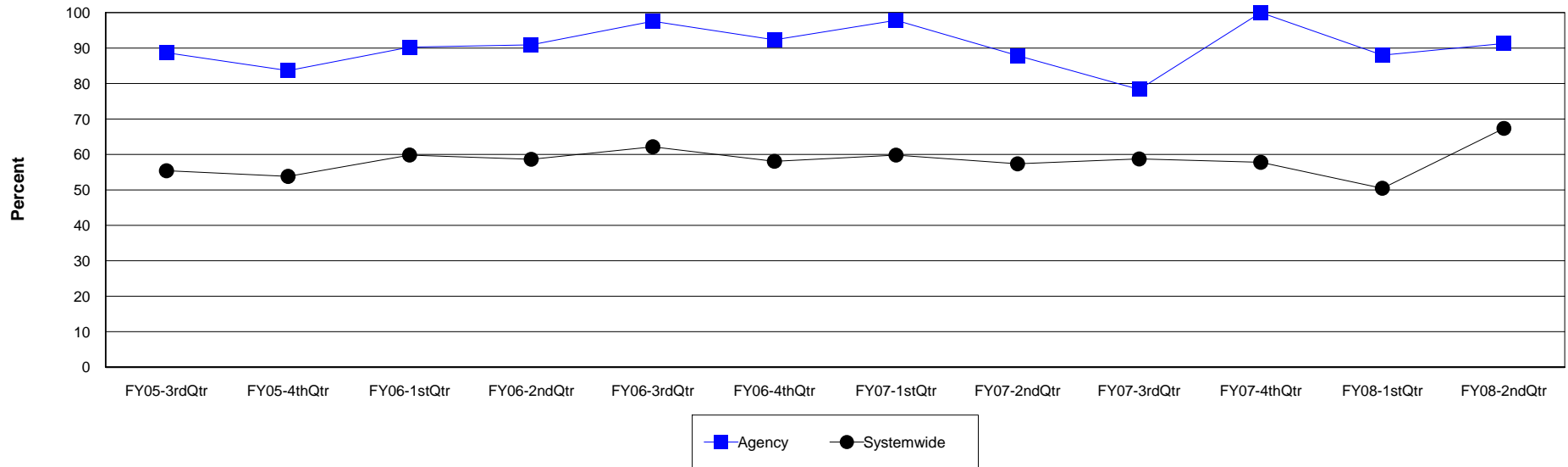
Agency: (640) 12 & 12, INC.

Level of Care: Detox

Contract Source: All Substance Abuse Contract Sources (PPMR)

Age Group: Adults (18+)

14-Day Follow Up (Referred) at 12 & 12, INC.



Agency	FY05-3rdQtr	FY05-4thQtr	FY06-1stQtr	FY06-2ndQtr	FY06-3rdQtr	FY06-4thQtr	FY07-1stQtr	FY07-2ndQtr	FY07-3rdQtr	FY07-4thQtr	FY08-1stQtr	FY08-2ndQtr
Follow Up	47	46	37	50	40	48	45	29	47	19	22	42
Discharges	53	55	41	55	41	52	46	33	60	19	25	46
Percent	88.7%	83.6%	90.2%	90.9%	97.6%	92.3%	97.8%	87.9%	78.3%	100.0%	88.0%	91.3%

Systemwide	FY05-3rdQtr	FY05-4thQtr	FY06-1stQtr	FY06-2ndQtr	FY06-3rdQtr	FY06-4thQtr	FY07-1stQtr	FY07-2ndQtr	FY07-3rdQtr	FY07-4thQtr	FY08-1stQtr	FY08-2ndQtr
Follow Up	226	219	219	153	151	155	128	113	148	134	110	132
Discharges	408	407	366	261	243	267	214	197	252	232	218	196
Percent	55.4%	53.8%	59.8%	58.6%	62.1%	58.1%	59.8%	57.4%	58.7%	57.8%	50.5%	67.3%

14-Day Follow Up (Referred Only)-Trend Line

14-Day Follow Up (Referred) after Discharge/Level of Care Change for the last Twelve Quarters

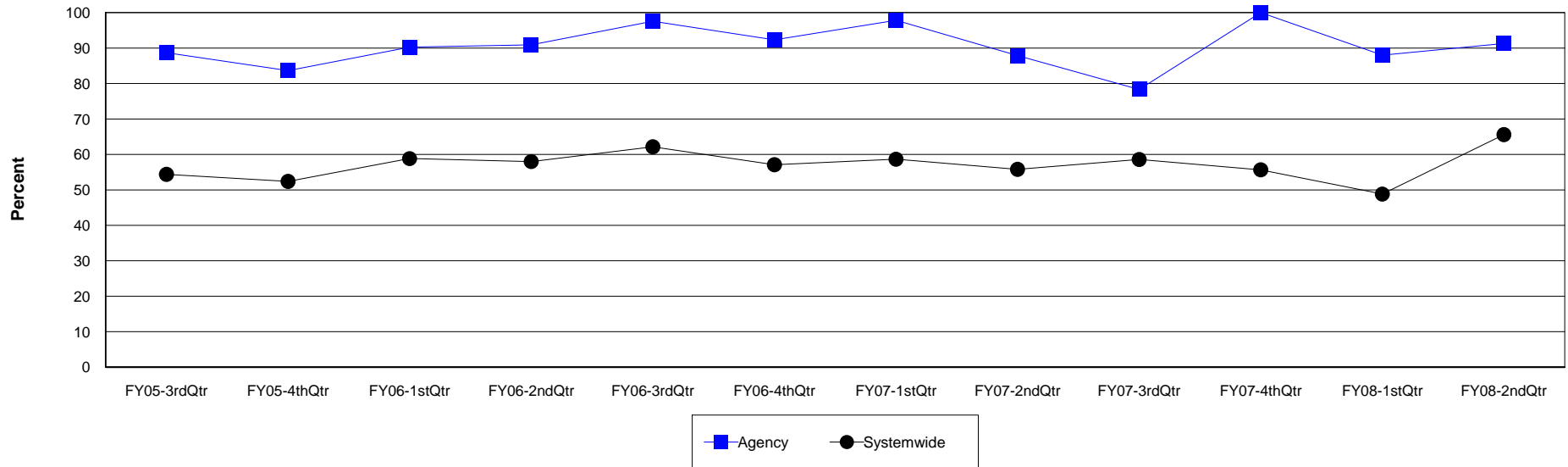
Agency: (640) 12 & 12, INC.

Level of Care: Detox

Contract Source: All Contract Sources

Age Group: Adults (18+)

14-Day Follow Up (Referred) at 12 & 12, INC.



Agency	FY05-3rdQtr	FY05-4thQtr	FY06-1stQtr	FY06-2ndQtr	FY06-3rdQtr	FY06-4thQtr	FY07-1stQtr	FY07-2ndQtr	FY07-3rdQtr	FY07-4thQtr	FY08-1stQtr	FY08-2ndQtr
Follow Up	47	46	37	50	40	48	45	29	47	19	22	42
Discharges	53	55	41	55	41	52	46	33	60	19	25	46
Percent	88.7%	83.6%	90.2%	90.9%	97.6%	92.3%	97.8%	87.9%	78.3%	100.0%	88.0%	91.3%

Systemwide	FY05-3rdQtr	FY05-4thQtr	FY06-1stQtr	FY06-2ndQtr	FY06-3rdQtr	FY06-4thQtr	FY07-1stQtr	FY07-2ndQtr	FY07-3rdQtr	FY07-4thQtr	FY08-1stQtr	FY08-2ndQtr
Follow Up	217	207	210	149	151	149	122	106	147	123	103	120
Discharges	399	395	357	257	243	261	208	190	251	221	211	183
Percent	54.4%	52.4%	58.8%	58.0%	62.1%	57.1%	58.7%	55.8%	58.6%	55.7%	48.8%	65.6%

14-Day Follow Up (Referred Only)-Trend Line

14-Day Follow Up (Referred) after Discharge/Level of Care Change for the last Twelve Quarters

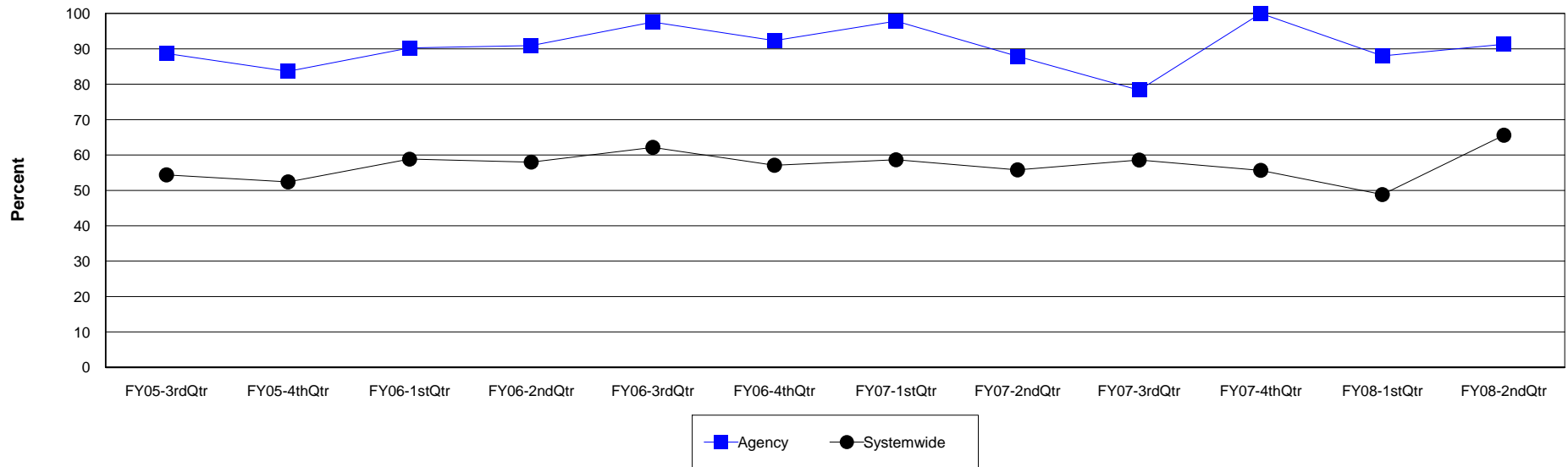
Agency: (640) 12 & 12, INC.

Level of Care: Detox

Contract Source: (02) ALCOHOL/DRUG

Age Group: Adults (18+)

14-Day Follow Up (Referred) at 12 & 12, INC.



Agency	FY05-3rdQtr	FY05-4thQtr	FY06-1stQtr	FY06-2ndQtr	FY06-3rdQtr	FY06-4thQtr	FY07-1stQtr	FY07-2ndQtr	FY07-3rdQtr	FY07-4thQtr	FY08-1stQtr	FY08-2ndQtr
Follow Up	47	46	37	50	40	48	45	29	47	19	22	42
Discharges	53	55	41	55	41	52	46	33	60	19	25	46
Percent	88.7%	83.6%	90.2%	90.9%	97.6%	92.3%	97.8%	87.9%	78.3%	100.0%	88.0%	91.3%

Systemwide	FY05-3rdQtr	FY05-4thQtr	FY06-1stQtr	FY06-2ndQtr	FY06-3rdQtr	FY06-4thQtr	FY07-1stQtr	FY07-2ndQtr	FY07-3rdQtr	FY07-4thQtr	FY08-1stQtr	FY08-2ndQtr
Follow Up	217	207	210	149	151	149	122	106	147	123	103	120
Discharges	399	395	357	257	243	261	208	190	251	221	211	183
Percent	54.4%	52.4%	58.8%	58.0%	62.1%	57.1%	58.7%	55.8%	58.6%	55.7%	48.8%	65.6%

14-Day Follow Up (Referred Only)-Trend Line

14-Day Follow Up (Referred) after Discharge/Level of Care Change for the last Twelve Quarters

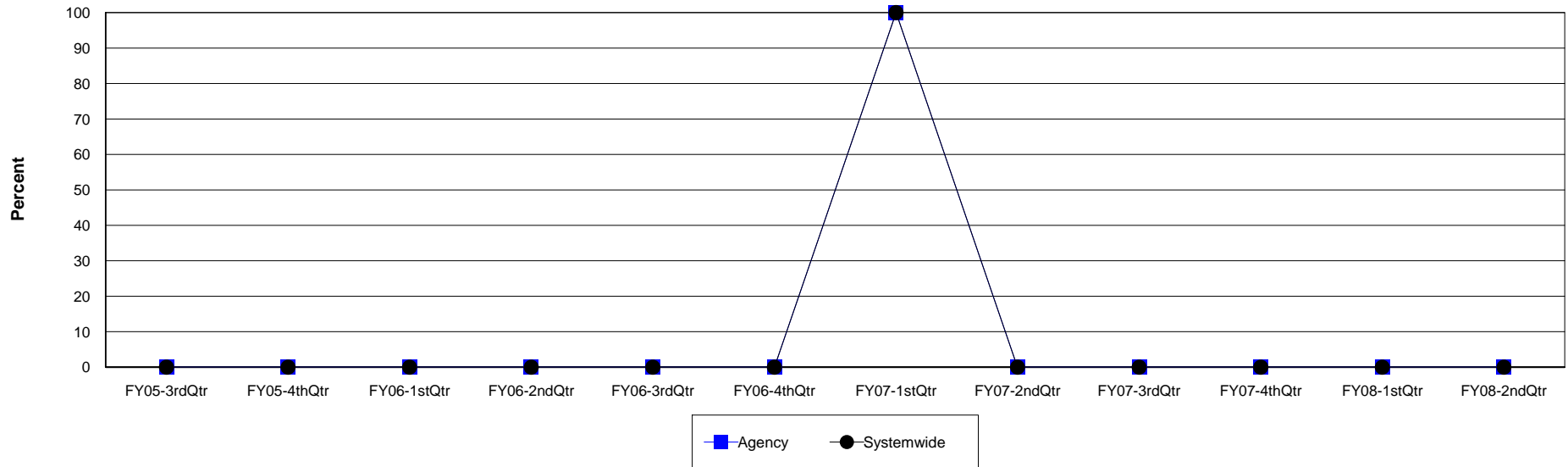
Agency: (640) 12 & 12, INC.

Level of Care: Detox

Contract Source: (21) ALCOHOL/DRUG SPECIALIZED PROGRAMS

Age Group: Adults (18+)

14-Day Follow Up (Referred) at 12 & 12, INC.



Agency	FY05-3rdQtr	FY05-4thQtr	FY06-1stQtr	FY06-2ndQtr	FY06-3rdQtr	FY06-4thQtr	FY07-1stQtr	FY07-2ndQtr	FY07-3rdQtr	FY07-4thQtr	FY08-1stQtr	FY08-2ndQtr
Follow Up	0	0	0	0	0	0	1	0	0	0	0	0
Discharges	0	0	0	0	0	0	1	0	0	0	0	0
Percent	0.0%	0.0%	0.0%	0.0%	0.0%	0.0%	100.0%	0.0%	0.0%	0.0%	0.0%	0.0%

Systemwide	FY05-3rdQtr	FY05-4thQtr	FY06-1stQtr	FY06-2ndQtr	FY06-3rdQtr	FY06-4thQtr	FY07-1stQtr	FY07-2ndQtr	FY07-3rdQtr	FY07-4thQtr	FY08-1stQtr	FY08-2ndQtr
Follow Up	0	0	0	0	0	0	1	0	0	0	0	0
Discharges	0	0	0	0	0	0	1	0	0	0	0	0
Percent	0.0%	0.0%	0.0%	0.0%	0.0%	0.0%	100.0%	0.0%	0.0%	0.0%	0.0%	0.0%

14-Day Follow Up (Referred Only)-Trend Line

14-Day Follow Up (Referred) after Discharge/Level of Care Change for the last Twelve Quarters

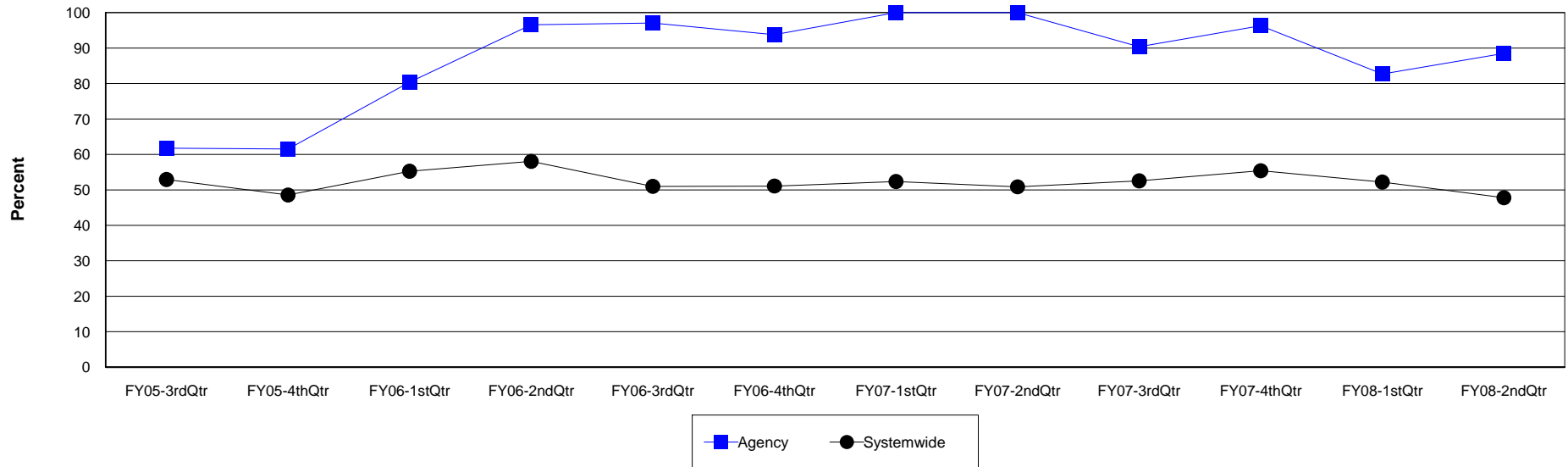
Agency: (640) 12 & 12, INC.

Level of Care: Residential Treatment

Contract Source: All Substance Abuse Contract Sources (PPMR)

Age Group: Adults (18+)

14-Day Follow Up (Referred) at 12 & 12, INC.



Agency	FY05-3rdQtr	FY05-4thQtr	FY06-1stQtr	FY06-2ndQtr	FY06-3rdQtr	FY06-4thQtr	FY07-1stQtr	FY07-2ndQtr	FY07-3rdQtr	FY07-4thQtr	FY08-1stQtr	FY08-2ndQtr
Follow Up	42	32	41	28	33	30	33	27	47	52	43	54
Discharges	68	52	51	29	34	32	33	27	52	54	52	61
Percent	61.8%	61.5%	80.4%	96.6%	97.1%	93.8%	100.0%	100.0%	90.4%	96.3%	82.7%	88.5%

Systemwide	FY05-3rdQtr	FY05-4thQtr	FY06-1stQtr	FY06-2ndQtr	FY06-3rdQtr	FY06-4thQtr	FY07-1stQtr	FY07-2ndQtr	FY07-3rdQtr	FY07-4thQtr	FY08-1stQtr	FY08-2ndQtr
Follow Up	108	101	105	112	102	118	122	118	134	149	130	130
Discharges	204	208	190	193	200	231	233	232	255	269	249	272
Percent	52.9%	48.6%	55.3%	58.0%	51.0%	51.1%	52.4%	50.9%	52.5%	55.4%	52.2%	47.8%

14-Day Follow Up (Referred Only)-Trend Line

14-Day Follow Up (Referred) after Discharge/Level of Care Change for the last Twelve Quarters

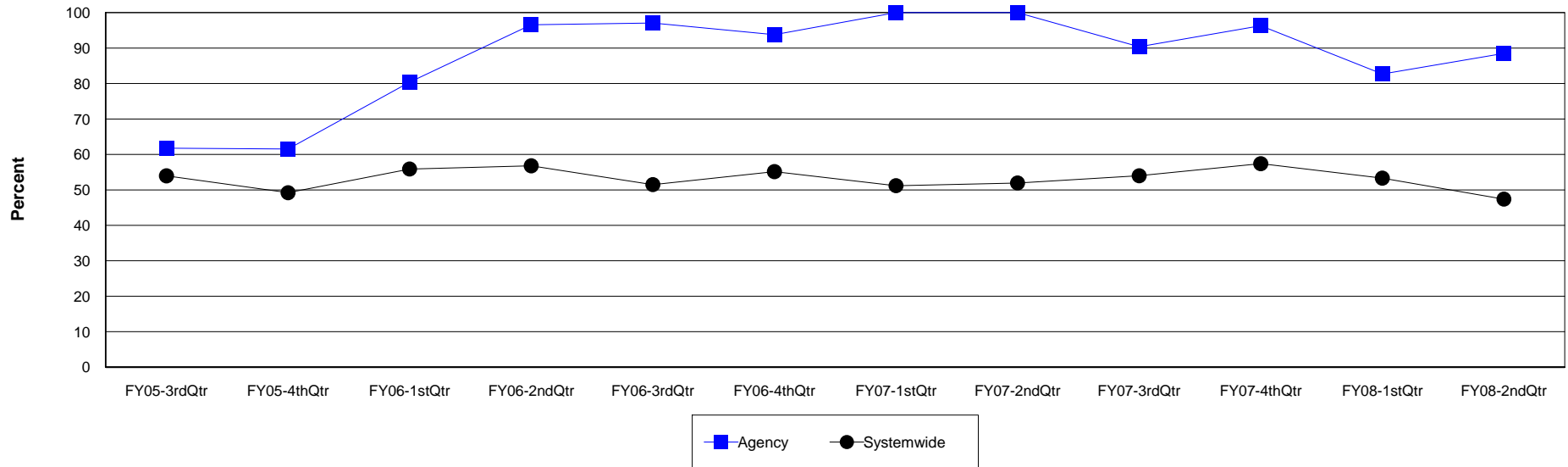
Agency: (640) 12 & 12, INC.

Level of Care: Residential Treatment

Contract Source: All Contract Sources

Age Group: Adults (18+)

14-Day Follow Up (Referred) at 12 & 12, INC.



Agency	FY05-3rdQtr	FY05-4thQtr	FY06-1stQtr	FY06-2ndQtr	FY06-3rdQtr	FY06-4thQtr	FY07-1stQtr	FY07-2ndQtr	FY07-3rdQtr	FY07-4thQtr	FY08-1stQtr	FY08-2ndQtr
Follow Up	42	32	41	28	33	30	33	27	47	52	43	54
Discharges	68	52	51	29	34	32	33	27	52	54	52	61
Percent	61.8%	61.5%	80.4%	96.6%	97.1%	93.8%	100.0%	100.0%	90.4%	96.3%	82.7%	88.5%

Systemwide	FY05-3rdQtr	FY05-4thQtr	FY06-1stQtr	FY06-2ndQtr	FY06-3rdQtr	FY06-4thQtr	FY07-1stQtr	FY07-2ndQtr	FY07-3rdQtr	FY07-4thQtr	FY08-1stQtr	FY08-2ndQtr
Follow Up	102	91	95	88	87	107	108	107	122	136	113	109
Discharges	189	185	170	155	169	194	211	206	226	237	212	230
Percent	54.0%	49.2%	55.9%	56.8%	51.5%	55.2%	51.2%	51.9%	54.0%	57.4%	53.3%	47.4%

14-Day Follow Up (Referred Only)-Trend Line

14-Day Follow Up (Referred) after Discharge/Level of Care Change for the last Twelve Quarters

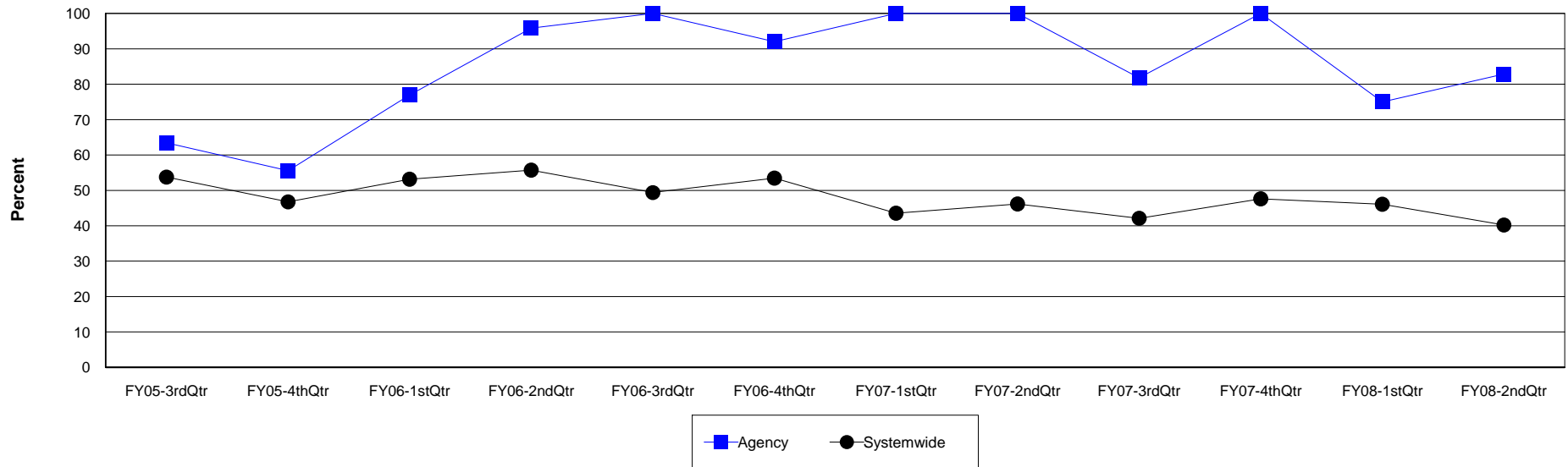
Agency: (640) 12 & 12, INC.

Level of Care: Residential Treatment

Contract Source: (02) ALCOHOL/DRUG

Age Group: Adults (18+)

14-Day Follow Up (Referred) at 12 & 12, INC.



Agency	FY05-3rdQtr	FY05-4thQtr	FY06-1stQtr	FY06-2ndQtr	FY06-3rdQtr	FY06-4thQtr	FY07-1stQtr	FY07-2ndQtr	FY07-3rdQtr	FY07-4thQtr	FY08-1stQtr	FY08-2ndQtr
Follow Up	33	20	30	23	26	23	23	15	18	24	18	29
Discharges	52	36	39	24	26	25	23	15	22	24	24	35
Percent	63.5%	55.6%	76.9%	95.8%	100.0%	92.0%	100.0%	100.0%	81.8%	100.0%	75.0%	82.9%

Systemwide	FY05-3rdQtr	FY05-4thQtr	FY06-1stQtr	FY06-2ndQtr	FY06-3rdQtr	FY06-4thQtr	FY07-1stQtr	FY07-2ndQtr	FY07-3rdQtr	FY07-4thQtr	FY08-1stQtr	FY08-2ndQtr
Follow Up	93	79	84	83	79	100	78	78	72	89	82	80
Discharges	173	169	158	149	160	187	179	169	171	187	178	199
Percent	53.8%	46.7%	53.2%	55.7%	49.4%	53.5%	43.6%	46.2%	42.1%	47.6%	46.1%	40.2%

14-Day Follow Up (Referred Only)-Trend Line

14-Day Follow Up (Referred) after Discharge/Level of Care Change for the last Twelve Quarters

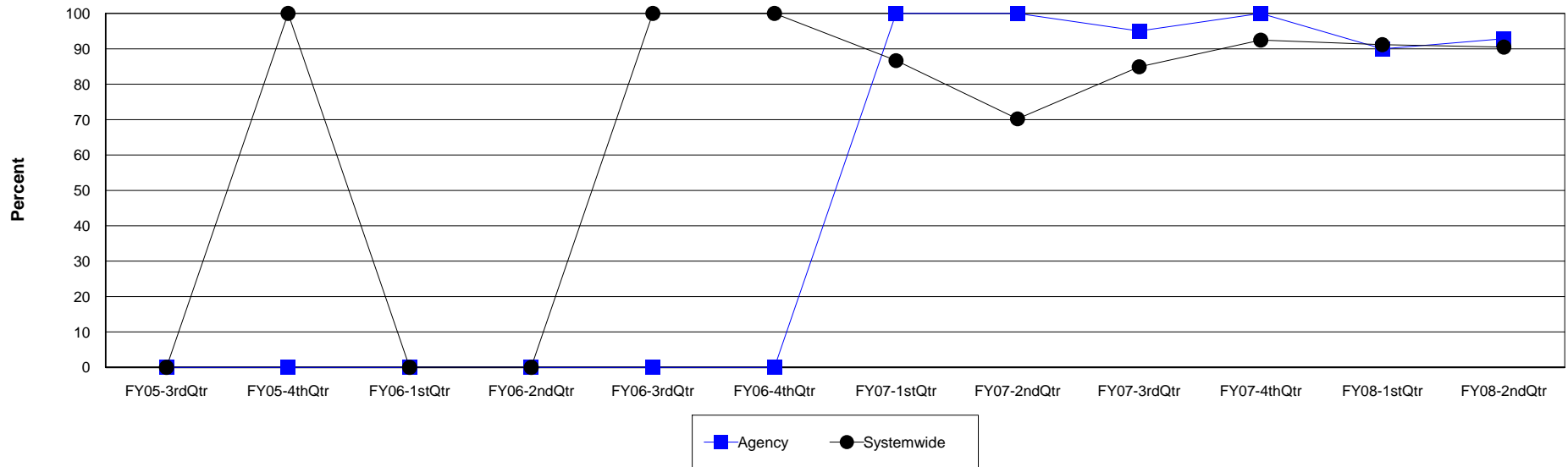
Agency: (640) 12 & 12, INC.

Level of Care: Residential Treatment

Contract Source: (20) DRUG COURT

Age Group: Adults (18+)

14-Day Follow Up (Referred) at 12 & 12, INC.



Agency	FY05-3rdQtr	FY05-4thQtr	FY06-1stQtr	FY06-2ndQtr	FY06-3rdQtr	FY06-4thQtr	FY07-1stQtr	FY07-2ndQtr	FY07-3rdQtr	FY07-4thQtr	FY08-1stQtr	FY08-2ndQtr
Follow Up	0	0	0	0	0	0	7	8	19	19	18	13
Discharges	0	0	0	0	0	0	7	8	20	19	20	14
Percent	0.0%	0.0%	0.0%	0.0%	0.0%	0.0%	100.0%	100.0%	95.0%	100.0%	90.0%	92.9%

Systemwide	FY05-3rdQtr	FY05-4thQtr	FY06-1stQtr	FY06-2ndQtr	FY06-3rdQtr	FY06-4thQtr	FY07-1stQtr	FY07-2ndQtr	FY07-3rdQtr	FY07-4thQtr	FY08-1stQtr	FY08-2ndQtr
Follow Up	0	1	0	0	3	2	39	33	45	49	31	19
Discharges	0	1	0	2	3	2	45	47	53	53	34	21
Percent	0.0%	100.0%	0.0%	0.0%	100.0%	100.0%	86.7%	70.2%	84.9%	92.5%	91.2%	90.5%

14-Day Follow Up (Referred Only)-Trend Line

14-Day Follow Up (Referred) after Discharge/Level of Care Change for the last Twelve Quarters

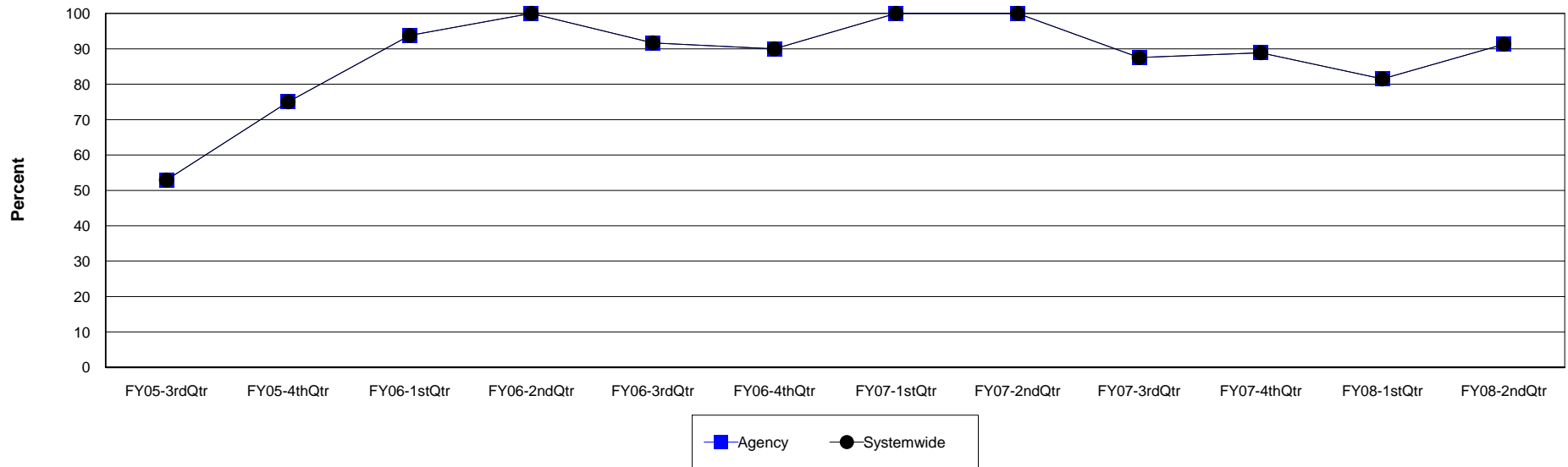
Agency: (640) 12 & 12, INC.

Level of Care: Residential Treatment

Contract Source: (21) ALCOHOL/DRUG SPECIALIZED PROGRAMS

Age Group: Adults (18+)

14-Day Follow Up (Referred) at 12 & 12, INC.



Agency	FY05-3rdQtr	FY05-4thQtr	FY06-1stQtr	FY06-2ndQtr	FY06-3rdQtr	FY06-4thQtr	FY07-1stQtr	FY07-2ndQtr	FY07-3rdQtr	FY07-4thQtr	FY08-1stQtr	FY08-2ndQtr
Follow Up	9	15	15	10	11	9	6	5	14	16	22	21
Discharges	17	20	16	10	12	10	6	5	16	18	27	23
Percent	52.9%	75.0%	93.8%	100.0%	91.7%	90.0%	100.0%	100.0%	87.5%	88.9%	81.5%	91.3%

Systemwide	FY05-3rdQtr	FY05-4thQtr	FY06-1stQtr	FY06-2ndQtr	FY06-3rdQtr	FY06-4thQtr	FY07-1stQtr	FY07-2ndQtr	FY07-3rdQtr	FY07-4thQtr	FY08-1stQtr	FY08-2ndQtr
Follow Up	9	15	15	10	11	9	6	5	14	16	22	21
Discharges	17	20	16	10	12	10	6	5	16	18	27	23
Percent	52.9%	75.0%	93.8%	100.0%	91.7%	90.0%	100.0%	100.0%	87.5%	88.9%	81.5%	91.3%

14-Day Follow Up (Referred Only)-Trend Line

14-Day Follow Up (Referred) after Discharge/Level of Care Change for the last Twelve Quarters

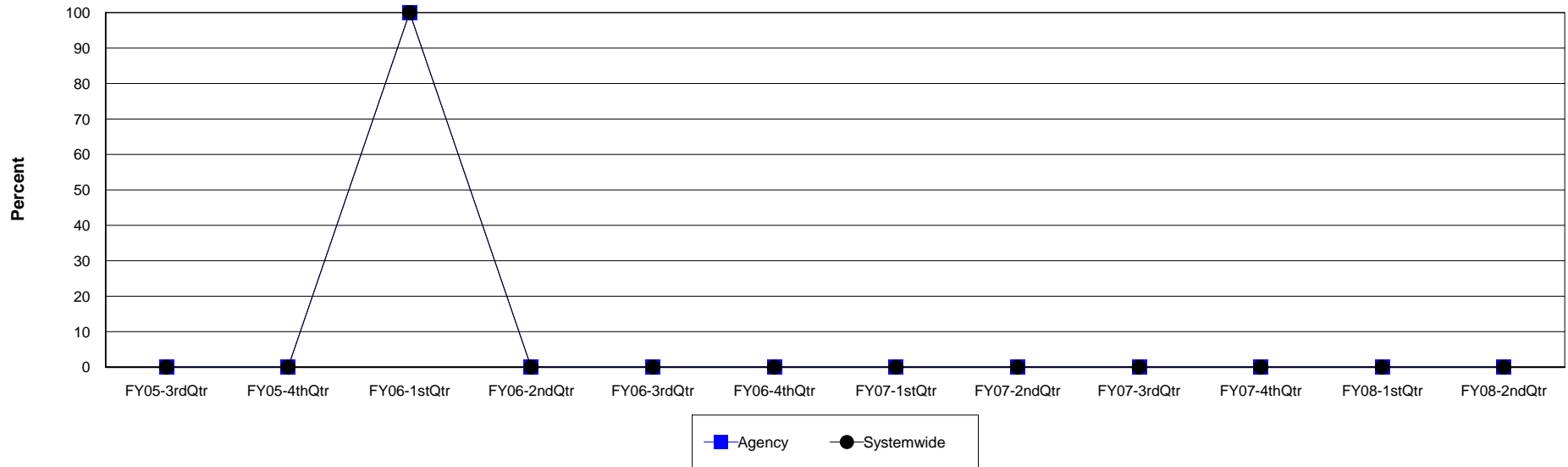
Agency: (640) 12 & 12, INC.

Level of Care: Detox

Contract Source: All Substance Abuse Contract Sources (PPMR)

Age Group: Children (0-17)

14-Day Follow Up (Referred) at 12 & 12, INC.



Agency	FY05-3rdQtr	FY05-4thQtr	FY06-1stQtr	FY06-2ndQtr	FY06-3rdQtr	FY06-4thQtr	FY07-1stQtr	FY07-2ndQtr	FY07-3rdQtr	FY07-4thQtr	FY08-1stQtr	FY08-2ndQtr
Follow Up	0	0	1	0	0	0	0	0	0	0	0	0
Discharges	0	0	1	0	0	0	0	0	0	0	0	0
Percent	0.0%	0.0%	100.0%	0.0%	0.0%	0.0%	0.0%	0.0%	0.0%	0.0%	0.0%	0.0%

Systemwide	FY05-3rdQtr	FY05-4thQtr	FY06-1stQtr	FY06-2ndQtr	FY06-3rdQtr	FY06-4thQtr	FY07-1stQtr	FY07-2ndQtr	FY07-3rdQtr	FY07-4thQtr	FY08-1stQtr	FY08-2ndQtr
Follow Up	0	0	1	0	0	0	0	0	0	0	0	0
Discharges	0	1	1	0	0	0	0	0	0	0	0	0
Percent	0.0%	0.0%	100.0%	0.0%	0.0%	0.0%	0.0%	0.0%	0.0%	0.0%	0.0%	0.0%

14-Day Follow Up (Referred Only)-Trend Line

14-Day Follow Up (Referred) after Discharge/Level of Care Change for the last Twelve Quarters

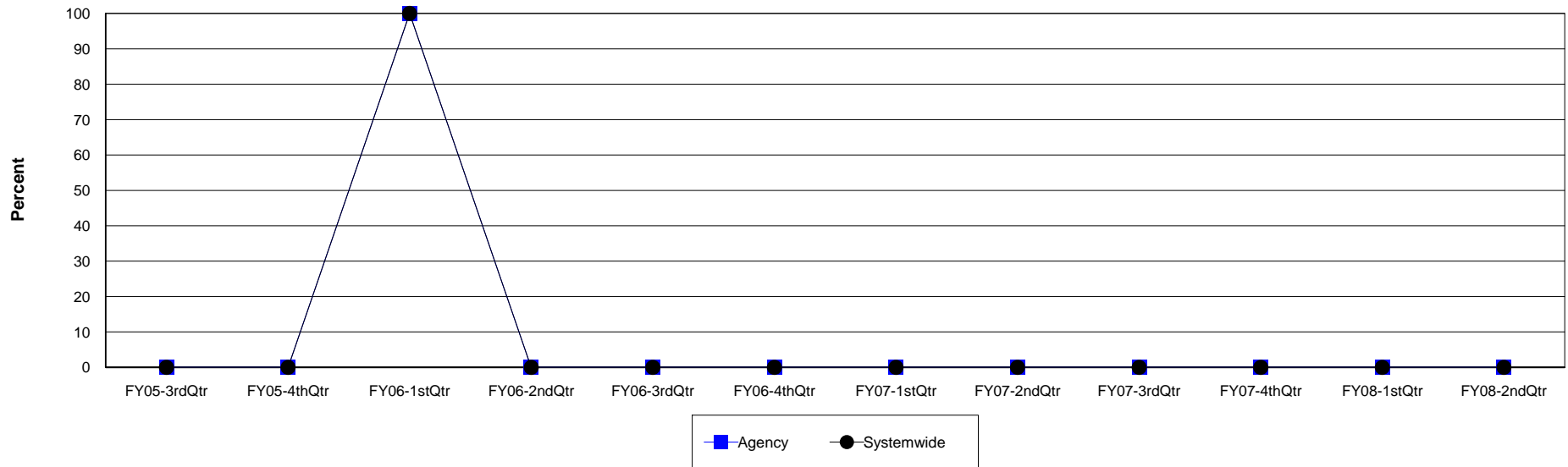
Agency: (640) 12 & 12, INC.

Level of Care: Detox

Contract Source: All Contract Sources

Age Group: Children (0-17)

14-Day Follow Up (Referred) at 12 & 12, INC.



Agency	FY05-3rdQtr	FY05-4thQtr	FY06-1stQtr	FY06-2ndQtr	FY06-3rdQtr	FY06-4thQtr	FY07-1stQtr	FY07-2ndQtr	FY07-3rdQtr	FY07-4thQtr	FY08-1stQtr	FY08-2ndQtr
Follow Up	0	0	1	0	0	0	0	0	0	0	0	0
Discharges	0	0	1	0	0	0	0	0	0	0	0	0
Percent	0.0%	0.0%	100.0%	0.0%	0.0%	0.0%	0.0%	0.0%	0.0%	0.0%	0.0%	0.0%

Systemwide	FY05-3rdQtr	FY05-4thQtr	FY06-1stQtr	FY06-2ndQtr	FY06-3rdQtr	FY06-4thQtr	FY07-1stQtr	FY07-2ndQtr	FY07-3rdQtr	FY07-4thQtr	FY08-1stQtr	FY08-2ndQtr
Follow Up	0	0	1	0	0	0	0	0	0	0	0	0
Discharges	0	1	1	0	0	0	0	0	0	0	0	0
Percent	0.0%	0.0%	100.0%	0.0%	0.0%	0.0%	0.0%	0.0%	0.0%	0.0%	0.0%	0.0%

14-Day Follow Up (Referred Only)-Trend Line

14-Day Follow Up (Referred) after Discharge/Level of Care Change for the last Twelve Quarters

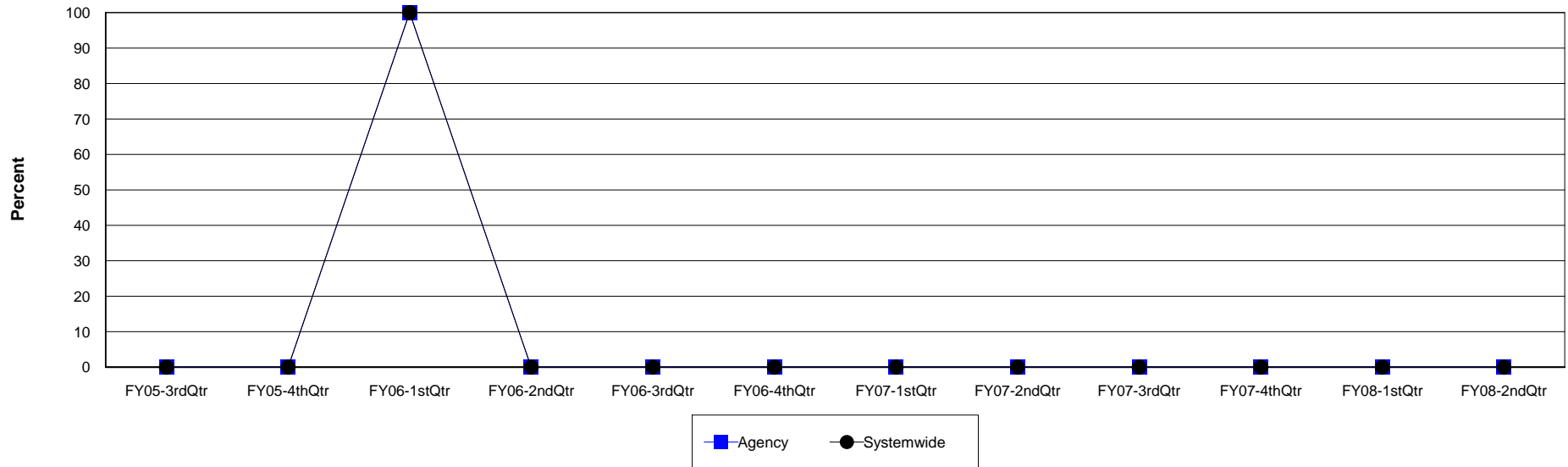
Agency: (640) 12 & 12, INC.

Level of Care: Detox

Contract Source: (02) ALCOHOL/DRUG

Age Group: Children (0-17)

14-Day Follow Up (Referred) at 12 & 12, INC.



Agency	FY05-3rdQtr	FY05-4thQtr	FY06-1stQtr	FY06-2ndQtr	FY06-3rdQtr	FY06-4thQtr	FY07-1stQtr	FY07-2ndQtr	FY07-3rdQtr	FY07-4thQtr	FY08-1stQtr	FY08-2ndQtr
Follow Up	0	0	1	0	0	0	0	0	0	0	0	0
Discharges	0	0	1	0	0	0	0	0	0	0	0	0
Percent	0.0%	0.0%	100.0%	0.0%	0.0%	0.0%	0.0%	0.0%	0.0%	0.0%	0.0%	0.0%

Systemwide	FY05-3rdQtr	FY05-4thQtr	FY06-1stQtr	FY06-2ndQtr	FY06-3rdQtr	FY06-4thQtr	FY07-1stQtr	FY07-2ndQtr	FY07-3rdQtr	FY07-4thQtr	FY08-1stQtr	FY08-2ndQtr
Follow Up	0	0	1	0	0	0	0	0	0	0	0	0
Discharges	0	1	1	0	0	0	0	0	0	0	0	0
Percent	0.0%	0.0%	100.0%	0.0%	0.0%	0.0%	0.0%	0.0%	0.0%	0.0%	0.0%	0.0%

14-Day Follow Up (Referred Only)-Trend Line

14-Day Follow Up (Referred) after Discharge/Level of Care Change for the last Twelve Quarters

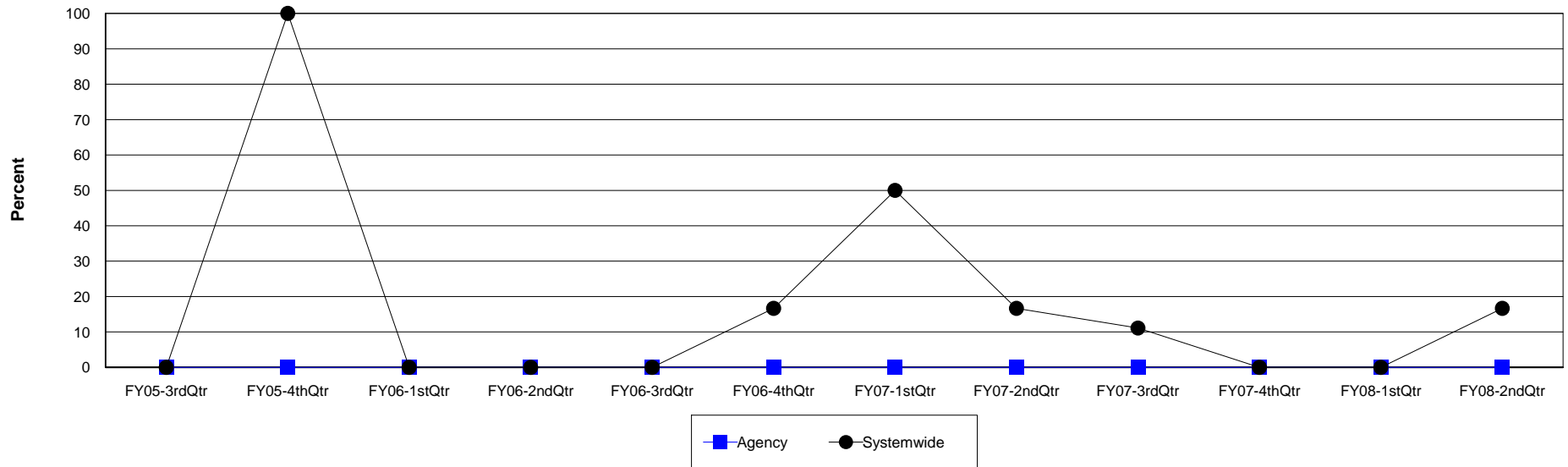
Agency: (640) 12 & 12, INC.

Level of Care: Residential Treatment

Contract Source: All Substance Abuse Contract Sources (PPMR)

Age Group: Children (0-17)

14-Day Follow Up (Referred) at 12 & 12, INC.



Agency	FY05-3rdQtr	FY05-4thQtr	FY06-1stQtr	FY06-2ndQtr	FY06-3rdQtr	FY06-4thQtr	FY07-1stQtr	FY07-2ndQtr	FY07-3rdQtr	FY07-4thQtr	FY08-1stQtr	FY08-2ndQtr
Follow Up	0	0	0	0	0	0	0	0	0	0	0	0
Discharges	0	0	0	0	0	0	0	0	0	0	0	0
Percent	0.0%	0.0%	0.0%	0.0%	0.0%	0.0%	0.0%	0.0%	0.0%	0.0%	0.0%	0.0%

Systemwide	FY05-3rdQtr	FY05-4thQtr	FY06-1stQtr	FY06-2ndQtr	FY06-3rdQtr	FY06-4thQtr	FY07-1stQtr	FY07-2ndQtr	FY07-3rdQtr	FY07-4thQtr	FY08-1stQtr	FY08-2ndQtr
Follow Up	0	1	0	0	0	1	2	1	1	0	0	1
Discharges	0	1	0	0	0	6	4	6	9	3	13	6
Percent	0.0%	100.0%	0.0%	0.0%	0.0%	16.7%	50.0%	16.7%	11.1%	0.0%	0.0%	16.7%

14-Day Follow Up (Referred Only)-Trend Line

14-Day Follow Up (Referred) after Discharge/Level of Care Change for the last Twelve Quarters

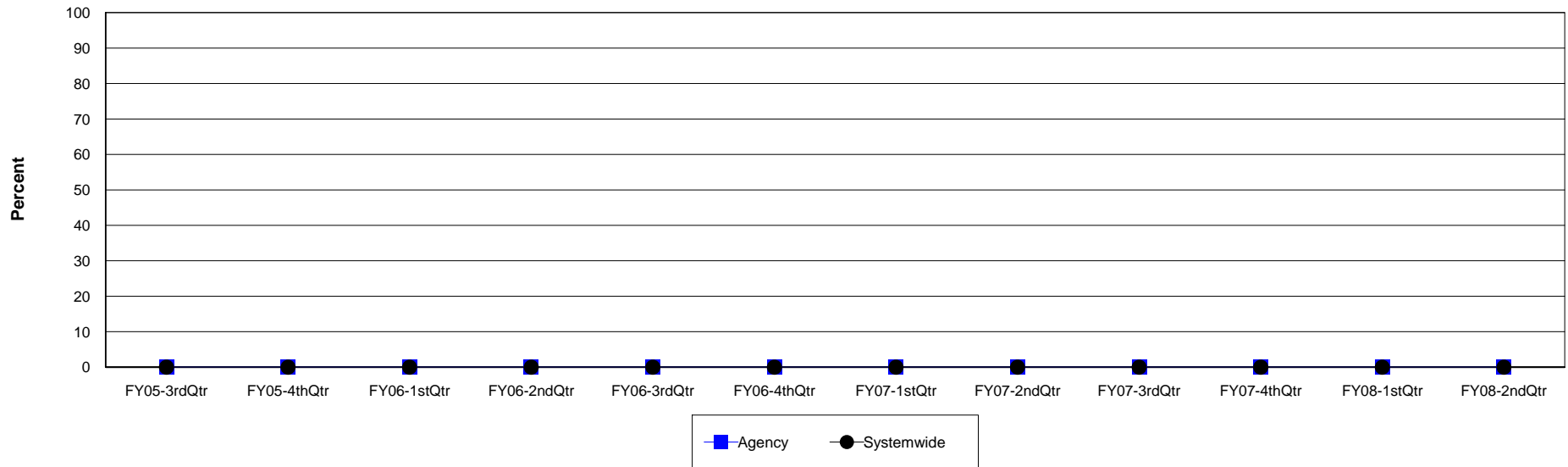
Agency: (640) 12 & 12, INC.

Level of Care: Residential Treatment

Contract Source: All Contract Sources

Age Group: Children (0-17)

14-Day Follow Up (Referred) at 12 & 12, INC.



Agency	FY05-3rdQtr	FY05-4thQtr	FY06-1stQtr	FY06-2ndQtr	FY06-3rdQtr	FY06-4thQtr	FY07-1stQtr	FY07-2ndQtr	FY07-3rdQtr	FY07-4thQtr	FY08-1stQtr	FY08-2ndQtr
Follow Up	0	0	0	0	0	0	0	0	0	0	0	0
Discharges	0	0	0	0	0	0	0	0	0	0	0	0
Percent	0.0%	0.0%	0.0%	0.0%	0.0%	0.0%	0.0%	0.0%	0.0%	0.0%	0.0%	0.0%

Systemwide	FY05-3rdQtr	FY05-4thQtr	FY06-1stQtr	FY06-2ndQtr	FY06-3rdQtr	FY06-4thQtr	FY07-1stQtr	FY07-2ndQtr	FY07-3rdQtr	FY07-4thQtr	FY08-1stQtr	FY08-2ndQtr
Follow Up	0	0	0	0	0	0	0	0	0	0	0	0
Discharges	0	0	0	0	0	0	0	0	0	0	0	0
Percent	0.0%	0.0%	0.0%	0.0%	0.0%	0.0%	0.0%	0.0%	0.0%	0.0%	0.0%	0.0%

14-Day Follow Up (Referred Only)-Trend Line

14-Day Follow Up (Referred) after Discharge/Level of Care Change for the last Twelve Quarters

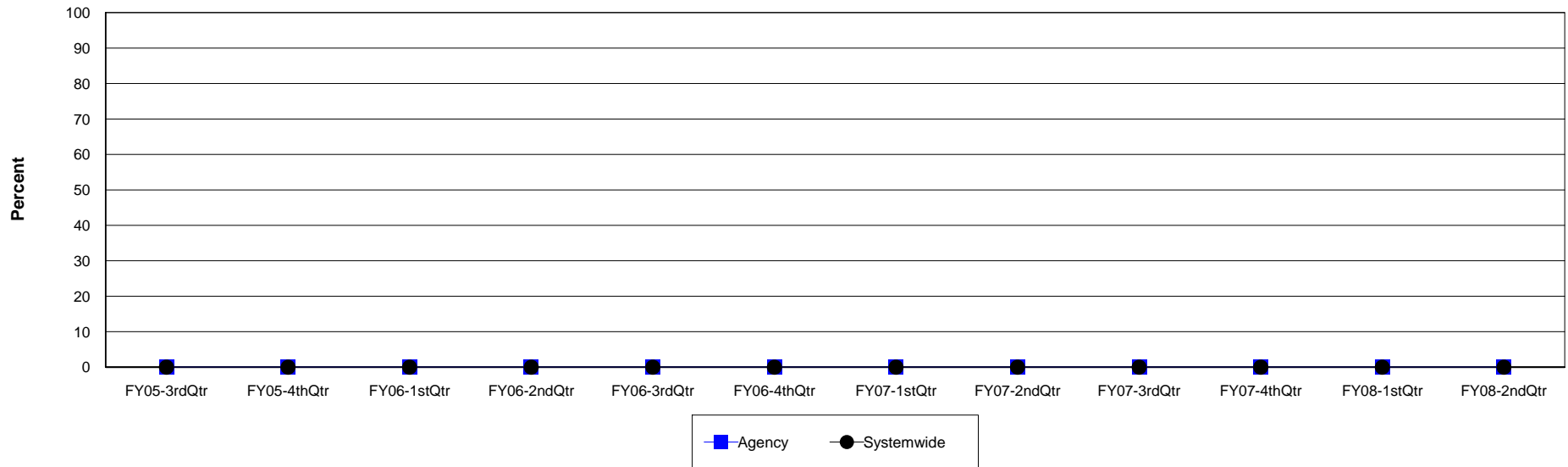
Agency: (640) 12 & 12, INC.

Level of Care: Residential Treatment

Contract Source: (21) ALCOHOL/DRUG SPECIALIZED PROGRAMS

Age Group: Children (0-17)

14-Day Follow Up (Referred) at 12 & 12, INC.



Agency	FY05-3rdQtr	FY05-4thQtr	FY06-1stQtr	FY06-2ndQtr	FY06-3rdQtr	FY06-4thQtr	FY07-1stQtr	FY07-2ndQtr	FY07-3rdQtr	FY07-4thQtr	FY08-1stQtr	FY08-2ndQtr
Follow Up	0	0	0	0	0	0	0	0	0	0	0	0
Discharges	0	0	0	0	0	0	0	0	0	0	0	0
Percent	0.0%	0.0%	0.0%	0.0%	0.0%	0.0%	0.0%	0.0%	0.0%	0.0%	0.0%	0.0%

Systemwide	FY05-3rdQtr	FY05-4thQtr	FY06-1stQtr	FY06-2ndQtr	FY06-3rdQtr	FY06-4thQtr	FY07-1stQtr	FY07-2ndQtr	FY07-3rdQtr	FY07-4thQtr	FY08-1stQtr	FY08-2ndQtr
Follow Up	0	0	0	0	0	0	0	0	0	0	0	0
Discharges	0	0	0	0	0	0	0	0	0	0	0	0
Percent	0.0%	0.0%	0.0%	0.0%	0.0%	0.0%	0.0%	0.0%	0.0%	0.0%	0.0%	0.0%