

# Community Tenure (30 days)-Trend Line

Community Tenure (30 Days) after Discharge/Level of Care Change for the last Twelve Quarters  
at (640) 12 & 12, INC.

Printed Date: 2/5/2008

Data Last Updated on: 02/03/2008

## Report Description:

### Oklahoma Performance Measures (OPMs)

Outcome: Community Tenure (30 Days)  
Measure: 30-Day Readmission Rate

The information provided in this report reflects the number of discharges/level of care changes, rather than the number of individuals. For example, if a person is discharged five times during the selected time period, the number of discharges would be five. To be included in this report, at least one service must be reported after admission. Also, when an episode includes more than one service reported under multiple contract sources, the episode will be counted under each contract source, but will only be counted once under the 'All Contract Sources' or 'All Substance Abuse Contract Sources (PPMR)' report.

#### DEFINITIONS:

**Excluded:** Individuals are excluded from this measure for one or more of the following reasons:

- Dependent or co-dependent
- Discharge type is code 68 (Death) or code 65 (Incarcerated)
- Outpatient or Halfway House discharges (measure is for Residential Treatment and Detox only)

**Readmitted:** Discharge resulted in another admission within 30 days to the same level of care. Readmission agency could be different than discharge agency.

**Not Readmitted:** Discharge did not result in another admission within 30 days.

**Discharge:** Individual leaves treatment at that agency.

**Level of Care Change:** Individual is moving from either detox, residential treatment, halfway house or outpatient to another level of care within an agency.

**Systemwide:** Represents all ODMHSAS-contracted and operated facilities which have that level of care and contract source.

**All Substance Abuse Contract Sources (PPMR):** Includes the following contract source codes: 02, 03, 17, 20, 21, 22, 23, 27, 29, 41, 44, 49, 54, 61 and 70. These contract sources are included in the Substance Abuse Provider Performance Management Report.

**All Contract Sources:** All contract sources which this agency reports.

#### Notes:

Data for this report are only updated by ODMHSAS staff at intervals. If the "Data Last Updated on:" is more than two weeks past, please contact Mark A. Reynolds at mreynolds@odmhsas.org or (405) 522-3824.

#### Discharge Codes:

##### Planned

60 - Completed Treatment  
61 - Completed Court Treatment  
40 - Level of Care Change

##### Unplanned

62 - Left ACA/90 Days  
66 - Broke Rules  
67 - AWOL  
70 - Discharge Due to Treatment Incompatibility  
92 - No service in 180 Days (auto-discharge)

##### Other

63 - Moved  
64 - Transferred to another treatment facility  
65 - Incarcerated  
68 - Death  
69 - Failed to begin Treatment

# Community Tenure (30 days)-Trend Line

Community Tenure (30 Days) after Discharge/Level of Care Change for the last Twelve Quarters

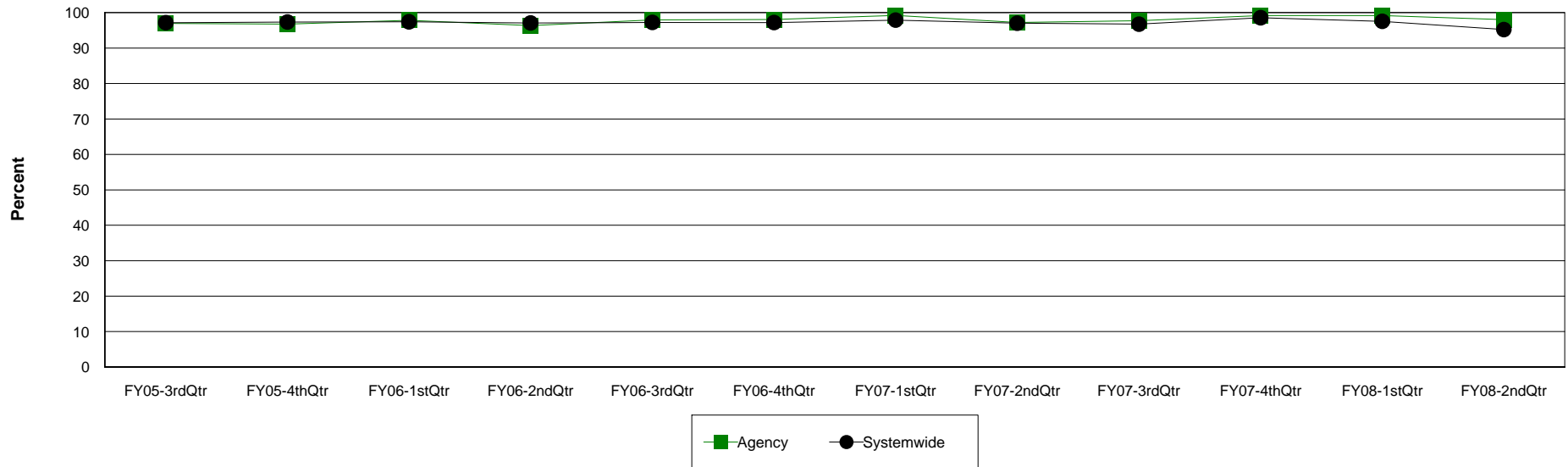
**Agency: (640) 12 & 12, INC.**

**Level of Care: Residential Treatment**

**Contract Source: All Substance Abuse Contract Sources (PPMR)**

**Age Group: Adults (18+)**

## Community Tenure (30 Days) at 12 & 12, INC.



| Agency     | FY05-3rdQtr | FY05-4thQtr | FY06-1stQtr | FY06-2ndQtr | FY06-3rdQtr | FY06-4thQtr | FY07-1stQtr | FY07-2ndQtr | FY07-3rdQtr | FY07-4thQtr | FY08-1stQtr | FY08-2ndQtr |
|------------|-------------|-------------|-------------|-------------|-------------|-------------|-------------|-------------|-------------|-------------|-------------|-------------|
| Readmitted | 126         | 119         | 137         | 131         | 96          | 101         | 128         | 106         | 129         | 121         | 119         | 149         |
| Discharges | 130         | 123         | 140         | 136         | 98          | 103         | 129         | 109         | 132         | 122         | 120         | 152         |
| Percent    | 96.9%       | 96.7%       | 97.9%       | 96.3%       | 98.0%       | 98.1%       | 99.2%       | 97.2%       | 97.7%       | 99.2%       | 99.2%       | 98.0%       |

| Systemwide | FY05-3rdQtr | FY05-4thQtr | FY06-1stQtr | FY06-2ndQtr | FY06-3rdQtr | FY06-4thQtr | FY07-1stQtr | FY07-2ndQtr | FY07-3rdQtr | FY07-4thQtr | FY08-1stQtr | FY08-2ndQtr |
|------------|-------------|-------------|-------------|-------------|-------------|-------------|-------------|-------------|-------------|-------------|-------------|-------------|
| Readmitted | 857         | 923         | 866         | 928         | 878         | 833         | 878         | 846         | 830         | 955         | 909         | 858         |
| Discharges | 882         | 948         | 889         | 956         | 903         | 857         | 897         | 872         | 858         | 969         | 932         | 901         |
| Percent    | 97.2%       | 97.4%       | 97.4%       | 97.1%       | 97.2%       | 97.2%       | 97.9%       | 97.0%       | 96.7%       | 98.6%       | 97.5%       | 95.2%       |

# Community Tenure (30 days)-Trend Line

Community Tenure (30 Days) after Discharge/Level of Care Change for the last Twelve Quarters

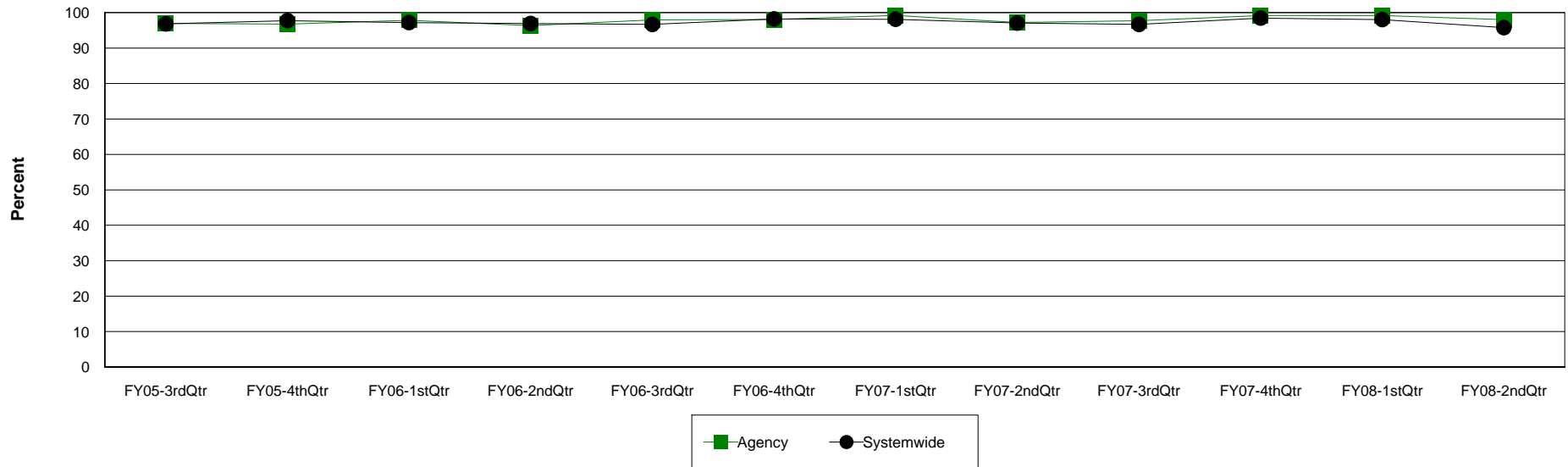
**Agency: (640) 12 & 12, INC.**

**Level of Care: Residential Treatment**

**Contract Source: All Contract Sources**

**Age Group: Adults (18+)**

## Community Tenure (30 Days) at 12 & 12, INC.



| Agency     | FY05-3rdQtr | FY05-4thQtr | FY06-1stQtr | FY06-2ndQtr | FY06-3rdQtr | FY06-4thQtr | FY07-1stQtr | FY07-2ndQtr | FY07-3rdQtr | FY07-4thQtr | FY08-1stQtr | FY08-2ndQtr |
|------------|-------------|-------------|-------------|-------------|-------------|-------------|-------------|-------------|-------------|-------------|-------------|-------------|
| Readmitted | 126         | 119         | 137         | 131         | 96          | 101         | 128         | 106         | 129         | 121         | 119         | 149         |
| Discharges | 130         | 123         | 140         | 136         | 98          | 103         | 129         | 109         | 132         | 122         | 120         | 152         |
| Percent    | 96.9%       | 96.7%       | 97.9%       | 96.3%       | 98.0%       | 98.1%       | 99.2%       | 97.2%       | 97.7%       | 99.2%       | 99.2%       | 98.0%       |

| Systemwide | FY05-3rdQtr | FY05-4thQtr | FY06-1stQtr | FY06-2ndQtr | FY06-3rdQtr | FY06-4thQtr | FY07-1stQtr | FY07-2ndQtr | FY07-3rdQtr | FY07-4thQtr | FY08-1stQtr | FY08-2ndQtr |
|------------|-------------|-------------|-------------|-------------|-------------|-------------|-------------|-------------|-------------|-------------|-------------|-------------|
| Readmitted | 701         | 738         | 661         | 721         | 636         | 612         | 683         | 624         | 612         | 707         | 699         | 724         |
| Discharges | 724         | 755         | 680         | 744         | 658         | 623         | 696         | 643         | 633         | 718         | 713         | 756         |
| Percent    | 96.8%       | 97.7%       | 97.2%       | 96.9%       | 96.7%       | 98.2%       | 98.1%       | 97.0%       | 96.7%       | 98.5%       | 98.0%       | 95.8%       |

# Community Tenure (30 days)-Trend Line

Community Tenure (30 Days) after Discharge/Level of Care Change for the last Twelve Quarters

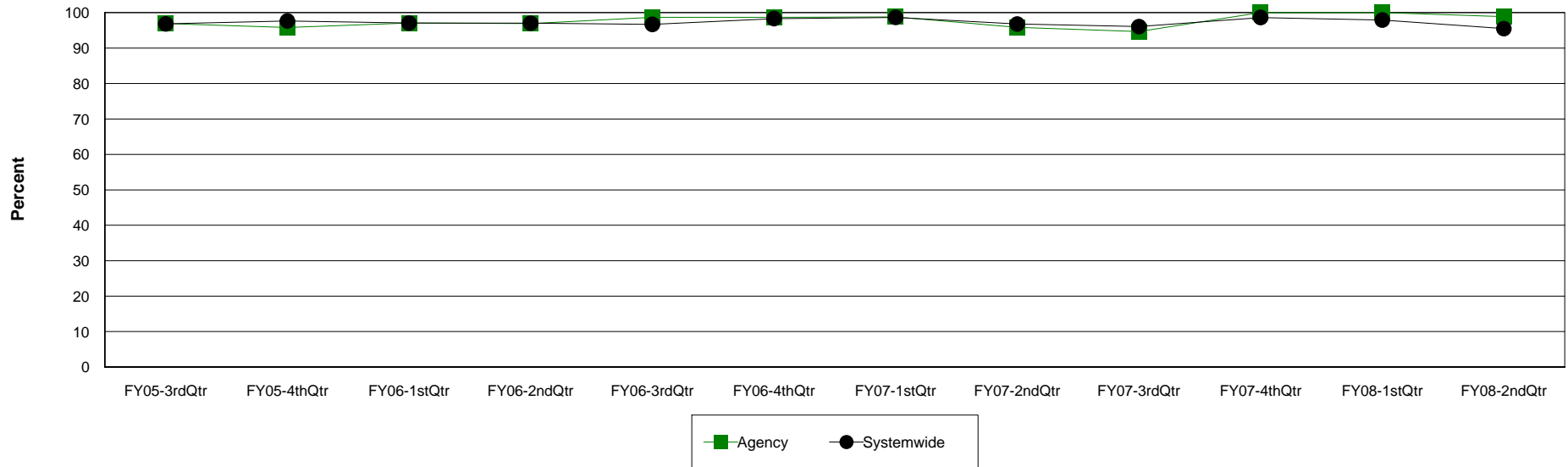
**Agency: (640) 12 & 12, INC.**

**Level of Care: Residential Treatment**

**Contract Source: (02) ALCOHOL/DRUG**

**Age Group: Adults (18+)**

## Community Tenure (30 Days) at 12 & 12, INC.



| Agency     | FY05-3rdQtr | FY05-4thQtr | FY06-1stQtr | FY06-2ndQtr | FY06-3rdQtr | FY06-4thQtr | FY07-1stQtr | FY07-2ndQtr | FY07-3rdQtr | FY07-4thQtr | FY08-1stQtr | FY08-2ndQtr |
|------------|-------------|-------------|-------------|-------------|-------------|-------------|-------------|-------------|-------------|-------------|-------------|-------------|
| Readmitted | 93          | 91          | 99          | 94          | 76          | 74          | 81          | 46          | 53          | 53          | 57          | 88          |
| Discharges | 96          | 95          | 102         | 97          | 77          | 75          | 82          | 48          | 56          | 53          | 57          | 89          |
| Percent    | 96.9%       | 95.8%       | 97.1%       | 96.9%       | 98.7%       | 98.7%       | 98.8%       | 95.8%       | 94.6%       | 100.0%      | 100.0%      | 98.9%       |

| Systemwide | FY05-3rdQtr | FY05-4thQtr | FY06-1stQtr | FY06-2ndQtr | FY06-3rdQtr | FY06-4thQtr | FY07-1stQtr | FY07-2ndQtr | FY07-3rdQtr | FY07-4thQtr | FY08-1stQtr | FY08-2ndQtr |
|------------|-------------|-------------|-------------|-------------|-------------|-------------|-------------|-------------|-------------|-------------|-------------|-------------|
| Readmitted | 668         | 710         | 623         | 683         | 612         | 585         | 584         | 480         | 462         | 573         | 607         | 635         |
| Discharges | 690         | 727         | 642         | 704         | 633         | 595         | 592         | 496         | 481         | 581         | 620         | 665         |
| Percent    | 96.8%       | 97.7%       | 97.0%       | 97.0%       | 96.7%       | 98.3%       | 98.6%       | 96.8%       | 96.0%       | 98.6%       | 97.9%       | 95.5%       |

# Community Tenure (30 days)-Trend Line

Community Tenure (30 Days) after Discharge/Level of Care Change for the last Twelve Quarters

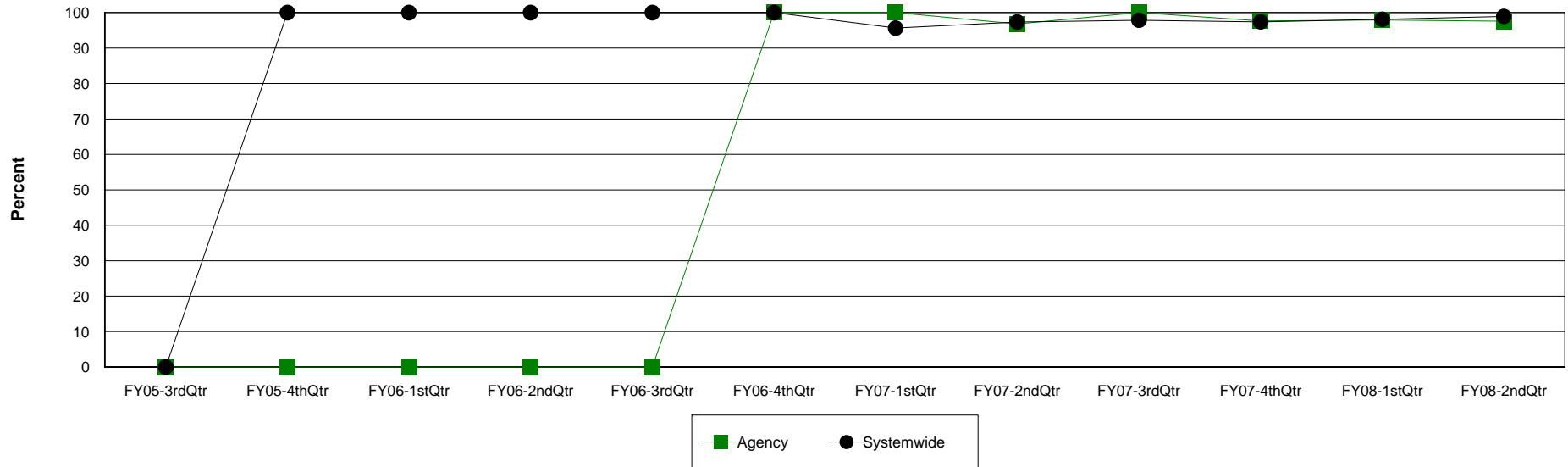
**Agency: (640) 12 & 12, INC.**

**Level of Care: Residential Treatment**

**Contract Source: (20) DRUG COURT**

**Age Group: Adults (18+)**

**Community Tenure (30 Days) at 12 & 12, INC.**



| Agency     | FY05-3rdQtr | FY05-4thQtr | FY06-1stQtr | FY06-2ndQtr | FY06-3rdQtr | FY06-4thQtr | FY07-1stQtr | FY07-2ndQtr | FY07-3rdQtr | FY07-4thQtr | FY08-1stQtr | FY08-2ndQtr |
|------------|-------------|-------------|-------------|-------------|-------------|-------------|-------------|-------------|-------------|-------------|-------------|-------------|
| Readmitted | 0           | 0           | 0           | 0           | 0           | 1           | 30          | 30          | 46          | 42          | 47          | 40          |
| Discharges | 0           | 0           | 0           | 0           | 0           | 1           | 30          | 31          | 46          | 43          | 48          | 41          |
| Percent    | 0.0%        | 0.0%        | 0.0%        | 0.0%        | 0.0%        | 100.0%      | 100.0%      | 96.8%       | 100.0%      | 97.7%       | 97.9%       | 97.6%       |

| Systemwide | FY05-3rdQtr | FY05-4thQtr | FY06-1stQtr | FY06-2ndQtr | FY06-3rdQtr | FY06-4thQtr | FY07-1stQtr | FY07-2ndQtr | FY07-3rdQtr | FY07-4thQtr | FY08-1stQtr | FY08-2ndQtr |
|------------|-------------|-------------|-------------|-------------|-------------|-------------|-------------|-------------|-------------|-------------|-------------|-------------|
| Readmitted | 0           | 1           | 1           | 4           | 6           | 4           | 131         | 147         | 137         | 149         | 104         | 91          |
| Discharges | 0           | 1           | 1           | 4           | 6           | 4           | 137         | 151         | 140         | 153         | 106         | 92          |
| Percent    | 0.0%        | 100.0%      | 100.0%      | 100.0%      | 100.0%      | 100.0%      | 95.6%       | 97.4%       | 97.9%       | 97.4%       | 98.1%       | 98.9%       |

# Community Tenure (30 days)-Trend Line

Community Tenure (30 Days) after Discharge/Level of Care Change for the last Twelve Quarters

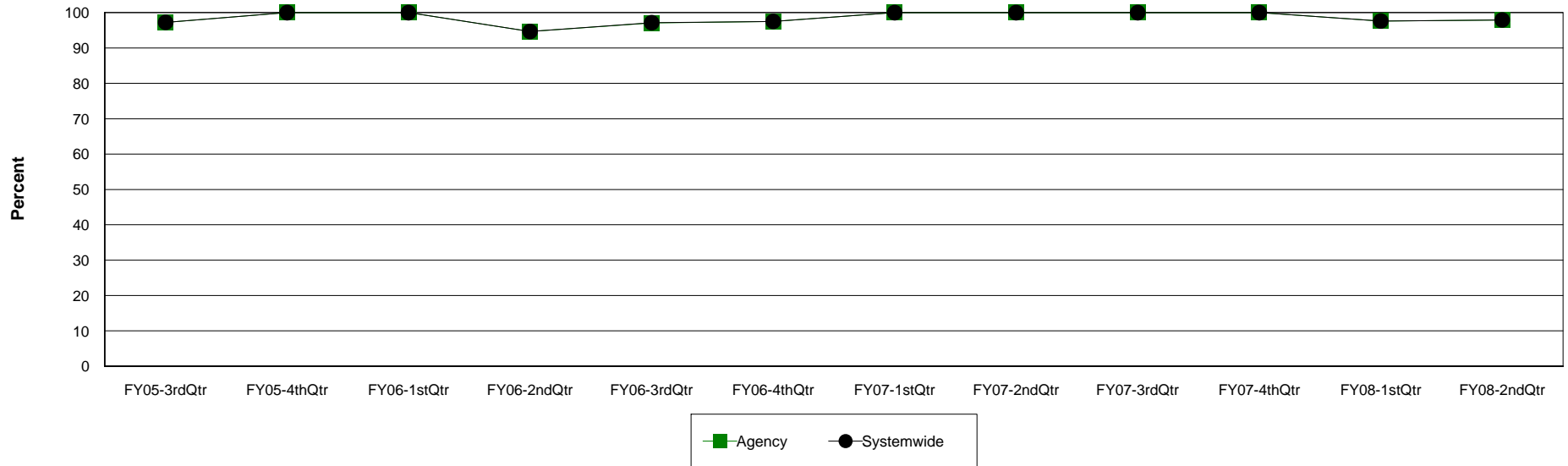
**Agency: (640) 12 & 12, INC.**

**Level of Care: Residential Treatment**

**Contract Source: (21) ALCOHOL/DRUG SPECIALIZED PROGRAMS**

**Age Group: Adults (18+)**

## Community Tenure (30 Days) at 12 & 12, INC.



| Agency     | FY05-3rdQtr | FY05-4thQtr | FY06-1stQtr | FY06-2ndQtr | FY06-3rdQtr | FY06-4thQtr | FY07-1stQtr | FY07-2ndQtr | FY07-3rdQtr | FY07-4thQtr | FY08-1stQtr | FY08-2ndQtr |
|------------|-------------|-------------|-------------|-------------|-------------|-------------|-------------|-------------|-------------|-------------|-------------|-------------|
| Readmitted | 35          | 40          | 53          | 53          | 33          | 39          | 37          | 33          | 40          | 41          | 41          | 47          |
| Discharges | 36          | 40          | 53          | 56          | 34          | 40          | 37          | 33          | 40          | 41          | 42          | 48          |
| Percent    | 97.2%       | 100.0%      | 100.0%      | 94.6%       | 97.1%       | 97.5%       | 100.0%      | 100.0%      | 100.0%      | 100.0%      | 97.6%       | 97.9%       |

| Systemwide | FY05-3rdQtr | FY05-4thQtr | FY06-1stQtr | FY06-2ndQtr | FY06-3rdQtr | FY06-4thQtr | FY07-1stQtr | FY07-2ndQtr | FY07-3rdQtr | FY07-4thQtr | FY08-1stQtr | FY08-2ndQtr |
|------------|-------------|-------------|-------------|-------------|-------------|-------------|-------------|-------------|-------------|-------------|-------------|-------------|
| Readmitted | 35          | 40          | 53          | 53          | 34          | 39          | 37          | 34          | 40          | 41          | 41          | 47          |
| Discharges | 36          | 40          | 53          | 56          | 35          | 40          | 37          | 34          | 40          | 41          | 42          | 48          |
| Percent    | 97.2%       | 100.0%      | 100.0%      | 94.6%       | 97.1%       | 97.5%       | 100.0%      | 100.0%      | 100.0%      | 100.0%      | 97.6%       | 97.9%       |

# Community Tenure (30 days)-Trend Line

Community Tenure (30 Days) after Discharge/Level of Care Change for the last Twelve Quarters

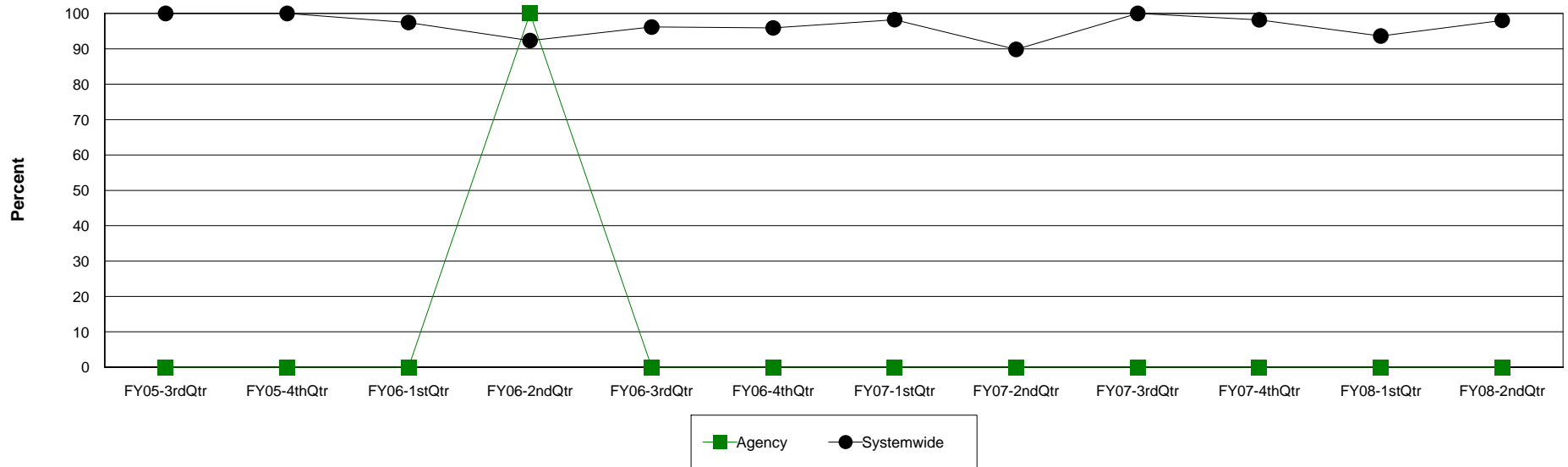
Agency: (640) 12 & 12, INC.

Level of Care: Residential Treatment

Contract Source: All Substance Abuse Contract Sources (PPMR)

Age Group: Children (0-17)

Community Tenure (30 Days) at 12 & 12, INC.



| Agency     | FY05-3rdQtr | FY05-4thQtr | FY06-1stQtr | FY06-2ndQtr | FY06-3rdQtr | FY06-4thQtr | FY07-1stQtr | FY07-2ndQtr | FY07-3rdQtr | FY07-4thQtr | FY08-1stQtr | FY08-2ndQtr |
|------------|-------------|-------------|-------------|-------------|-------------|-------------|-------------|-------------|-------------|-------------|-------------|-------------|
| Readmitted | 0           | 0           | 0           | 1           | 0           | 0           | 0           | 0           | 0           | 0           | 0           | 0           |
| Discharges | 0           | 0           | 0           | 1           | 0           | 0           | 0           | 0           | 0           | 0           | 0           | 0           |
| Percent    | 0.0%        | 0.0%        | 0.0%        | 100.0%      | 0.0%        | 0.0%        | 0.0%        | 0.0%        | 0.0%        | 0.0%        | 0.0%        | 0.0%        |

| Systemwide | FY05-3rdQtr | FY05-4thQtr | FY06-1stQtr | FY06-2ndQtr | FY06-3rdQtr | FY06-4thQtr | FY07-1stQtr | FY07-2ndQtr | FY07-3rdQtr | FY07-4thQtr | FY08-1stQtr | FY08-2ndQtr |
|------------|-------------|-------------|-------------|-------------|-------------|-------------|-------------|-------------|-------------|-------------|-------------|-------------|
| Readmitted | 19          | 26          | 38          | 48          | 50          | 47          | 56          | 62          | 43          | 54          | 44          | 50          |
| Discharges | 19          | 26          | 39          | 52          | 52          | 49          | 57          | 69          | 43          | 55          | 47          | 51          |
| Percent    | 100.0%      | 100.0%      | 97.4%       | 92.3%       | 96.2%       | 95.9%       | 98.2%       | 89.9%       | 100.0%      | 98.2%       | 93.6%       | 98.0%       |

# Community Tenure (30 days)-Trend Line

Community Tenure (30 Days) after Discharge/Level of Care Change for the last Twelve Quarters

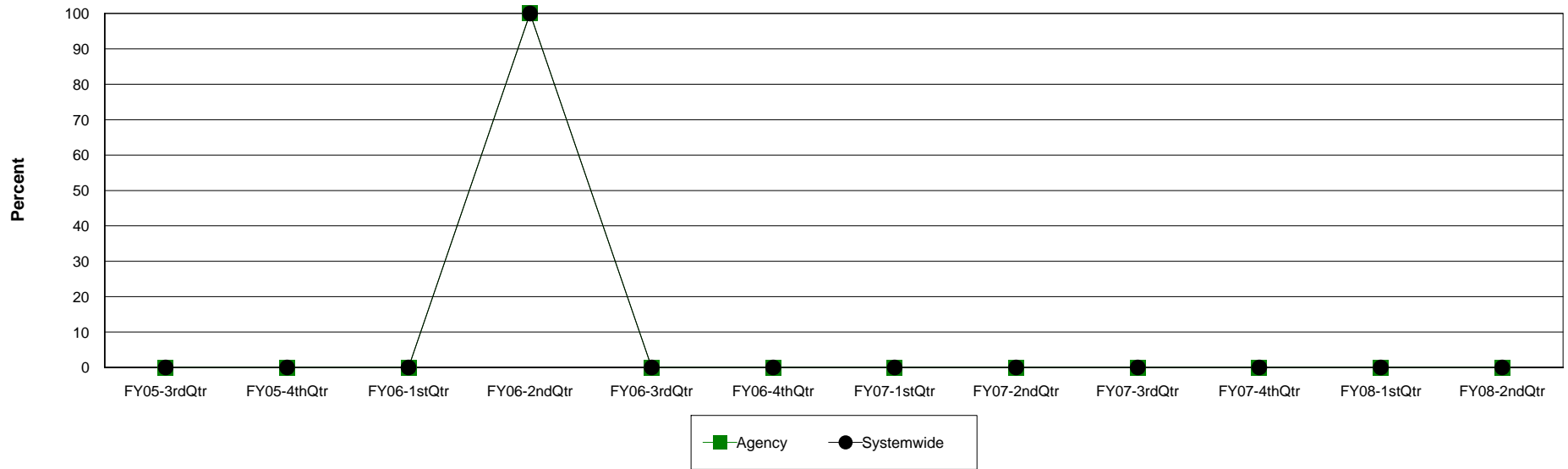
**Agency: (640) 12 & 12, INC.**

**Level of Care: Residential Treatment**

**Contract Source: (21) ALCOHOL/DRUG SPECIALIZED PROGRAMS**

**Age Group: Children (0-17)**

## Community Tenure (30 Days) at 12 & 12, INC.



| Agency     | FY05-3rdQtr | FY05-4thQtr | FY06-1stQtr | FY06-2ndQtr | FY06-3rdQtr | FY06-4thQtr | FY07-1stQtr | FY07-2ndQtr | FY07-3rdQtr | FY07-4thQtr | FY08-1stQtr | FY08-2ndQtr |
|------------|-------------|-------------|-------------|-------------|-------------|-------------|-------------|-------------|-------------|-------------|-------------|-------------|
| Readmitted | 0           | 0           | 0           | 1           | 0           | 0           | 0           | 0           | 0           | 0           | 0           | 0           |
| Discharges | 0           | 0           | 0           | 1           | 0           | 0           | 0           | 0           | 0           | 0           | 0           | 0           |
| Percent    | 0.0%        | 0.0%        | 0.0%        | 100.0%      | 0.0%        | 0.0%        | 0.0%        | 0.0%        | 0.0%        | 0.0%        | 0.0%        | 0.0%        |

| Systemwide | FY05-3rdQtr | FY05-4thQtr | FY06-1stQtr | FY06-2ndQtr | FY06-3rdQtr | FY06-4thQtr | FY07-1stQtr | FY07-2ndQtr | FY07-3rdQtr | FY07-4thQtr | FY08-1stQtr | FY08-2ndQtr |
|------------|-------------|-------------|-------------|-------------|-------------|-------------|-------------|-------------|-------------|-------------|-------------|-------------|
| Readmitted | 0           | 0           | 0           | 1           | 0           | 0           | 0           | 0           | 0           | 0           | 0           | 0           |
| Discharges | 0           | 0           | 0           | 1           | 0           | 0           | 0           | 0           | 0           | 0           | 0           | 0           |
| Percent    | 0.0%        | 0.0%        | 0.0%        | 100.0%      | 0.0%        | 0.0%        | 0.0%        | 0.0%        | 0.0%        | 0.0%        | 0.0%        | 0.0%        |