

Community Tenure (90 Days)-Trend Line

Community Tenure (90 Days) after Discharge/Level of Care Change for the last Twelve Quarters
at (640) 12 & 12, INC.

Report Date : 2/5/2008

Data Last Updated on: 02/03/2008

Report Description:

Oklahoma Performance Measures (OPMs)

Outcome: Community Tenure (90 Days)
Measure: 90-Day Readmission Rate

The information provided in this report reflects the number of discharges/level of care changes, rather than the number of individuals. For example, if a person is discharged five times during the selected time period, the number of discharges would be five. To be included in this report, at least one service must be reported after admission. Also, when an episode includes more than one service reported under multiple contract sources, the episode will be counted under each contract source, but will only be counted once under the 'All Contract Sources' or 'All Substance Abuse Contract Sources (PPMR)' report.

DEFINITIONS:

Excluded: Individuals are excluded from this measure for one or more of the following reasons:

- a. Dependent or co-dependent
- b. Discharge type is code 68 (Death) or code 65 (Incarcerated)
- c. Outpatient or Halfway House discharges (measure is for Residential Treatment and Detox only)

Readmitted: Discharge resulted in another admission within 90 days to the same level of care. Readmission agency could be different than discharge agency.

Not Readmitted: Discharge did not result in another admission within 90 days.

Discharge: Individual leaves treatment at that agency.

Level of Care Change: Individual is moving from either detox, residential treatment, halfway house or outpatient to another level of care within an agency.

Systemwide: Represents all ODMHSAS-contracted and operated facilities which have that level of care and contract source.

All Substance Abuse Contract Sources (PPMR): Includes the following contract source codes: 02, 03, 17, 20, 21, 22, 23, 27, 29, 41, 44, 49, 54, 61 and 70. These contract sources are included in the Substance Abuse Provider Performance Management Report.

All Contract Sources: All contract sources which this agency reports.

Notes:

Data for this report are only updated by ODMHSAS staff at intervals. If the "Data Last Updated on:" is more than two weeks past, please contact Mark A. Reynolds at mreynolds@odmhsas.org or (405) 522-3824.

Discharge Codes:

Planned

60 - Completed Treatment
61 - Completed Court Treatment
40 - Level of Care Change

Unplanned

62 - Left ACA/90 Days
66 - Broke Rules
67 - AWOL
70 - Discharge Due to Treatment Incompatibility
92 - No service in 180 Days (auto-discharge)

Other

63 - Moved
64 - Transferred to another treatment facility
65 - Incarcerated
68 - Death
69 - Failed to begin Treatment

Community Tenure (90 Days)-Trend Line

Community Tenure (90 Days) after Discharge/Level of Care Change for the last Twelve Quarters

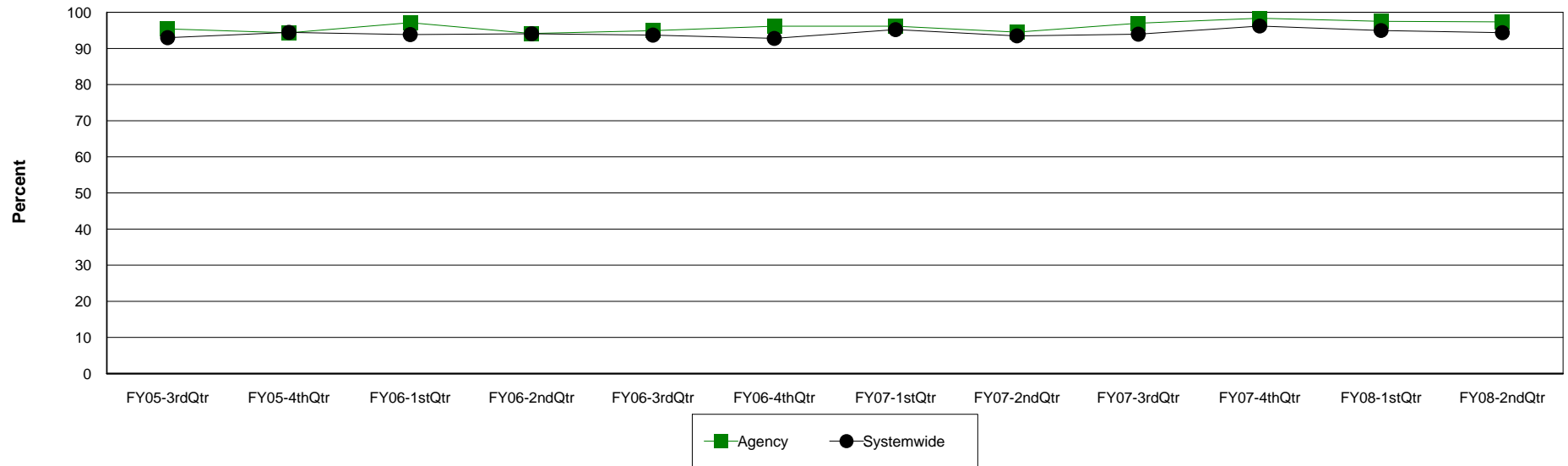
Agency: (640) 12 & 12, INC.

Level of Care: Residential Treatment

Contract Source: All Substance Abuse Contract Sources (PPMR)

Age Group: Adults (18+)

Community Tenure (90 Days) at 12 & 12, INC.



Agency	FY05-3rdQtr	FY05-4thQtr	FY06-1stQtr	FY06-2ndQtr	FY06-3rdQtr	FY06-4thQtr	FY07-1stQtr	FY07-2ndQtr	FY07-3rdQtr	FY07-4thQtr	FY08-1stQtr	FY08-2ndQtr
Readmitted	124	116	136	128	93	99	124	103	128	120	117	148
Discharges	130	123	140	136	98	103	129	109	132	122	120	152
Percent	95.4%	94.3%	97.1%	94.1%	94.9%	96.1%	96.1%	94.5%	97.0%	98.4%	97.5%	97.4%

Systemwide	FY05-3rdQtr	FY05-4thQtr	FY06-1stQtr	FY06-2ndQtr	FY06-3rdQtr	FY06-4thQtr	FY07-1stQtr	FY07-2ndQtr	FY07-3rdQtr	FY07-4thQtr	FY08-1stQtr	FY08-2ndQtr
Readmitted	820	895	834	899	846	795	854	815	806	932	885	850
Discharges	882	948	889	956	903	857	897	872	858	969	932	901
Percent	93.0%	94.4%	93.8%	94.0%	93.7%	92.8%	95.2%	93.5%	93.9%	96.2%	95.0%	94.3%

Community Tenure (90 Days)-Trend Line

Community Tenure (90 Days) after Discharge/Level of Care Change for the last Twelve Quarters

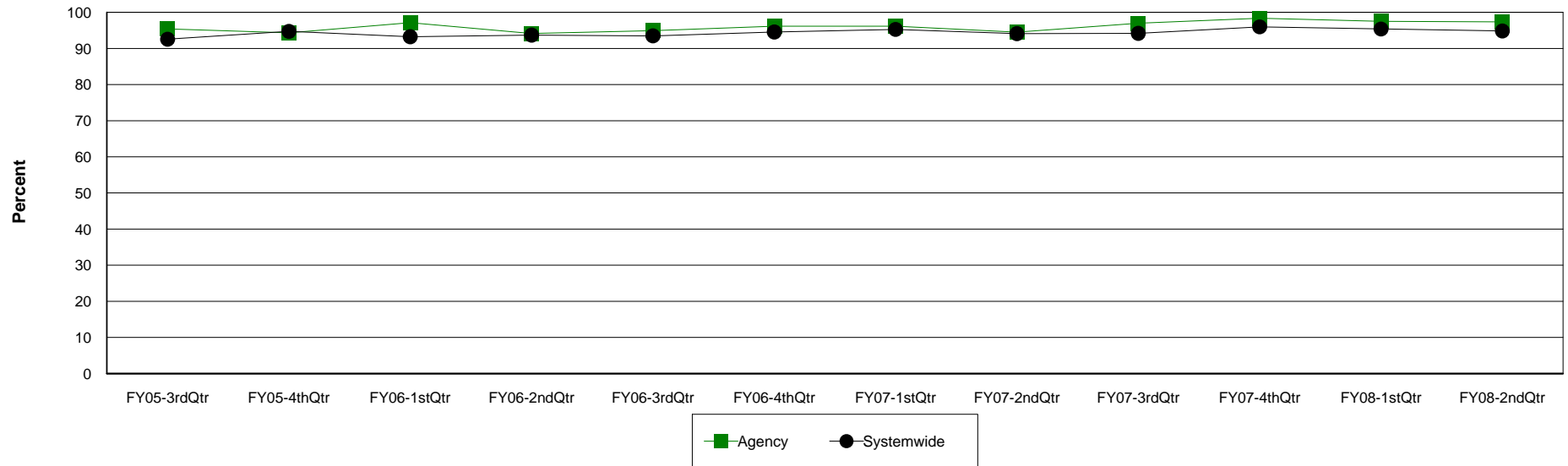
Agency: (640) 12 & 12, INC.

Level of Care: Residential Treatment

Contract Source: All Contract Sources

Age Group: Adults (18+)

Community Tenure (90 Days) at 12 & 12, INC.



Agency	FY05-3rdQtr	FY05-4thQtr	FY06-1stQtr	FY06-2ndQtr	FY06-3rdQtr	FY06-4thQtr	FY07-1stQtr	FY07-2ndQtr	FY07-3rdQtr	FY07-4thQtr	FY08-1stQtr	FY08-2ndQtr
Readmitted	124	116	136	128	93	99	124	103	128	120	117	148
Discharges	130	123	140	136	98	103	129	109	132	122	120	152
Percent	95.4%	94.3%	97.1%	94.1%	94.9%	96.1%	96.1%	94.5%	97.0%	98.4%	97.5%	97.4%

Systemwide	FY05-3rdQtr	FY05-4thQtr	FY06-1stQtr	FY06-2ndQtr	FY06-3rdQtr	FY06-4thQtr	FY07-1stQtr	FY07-2ndQtr	FY07-3rdQtr	FY07-4thQtr	FY08-1stQtr	FY08-2ndQtr
Readmitted	670	715	634	697	615	589	663	605	596	689	680	717
Discharges	724	755	680	744	658	623	696	643	633	718	713	756
Percent	92.5%	94.7%	93.2%	93.7%	93.5%	94.5%	95.3%	94.1%	94.2%	96.0%	95.4%	94.8%

Community Tenure (90 Days)-Trend Line

Community Tenure (90 Days) after Discharge/Level of Care Change for the last Twelve Quarters

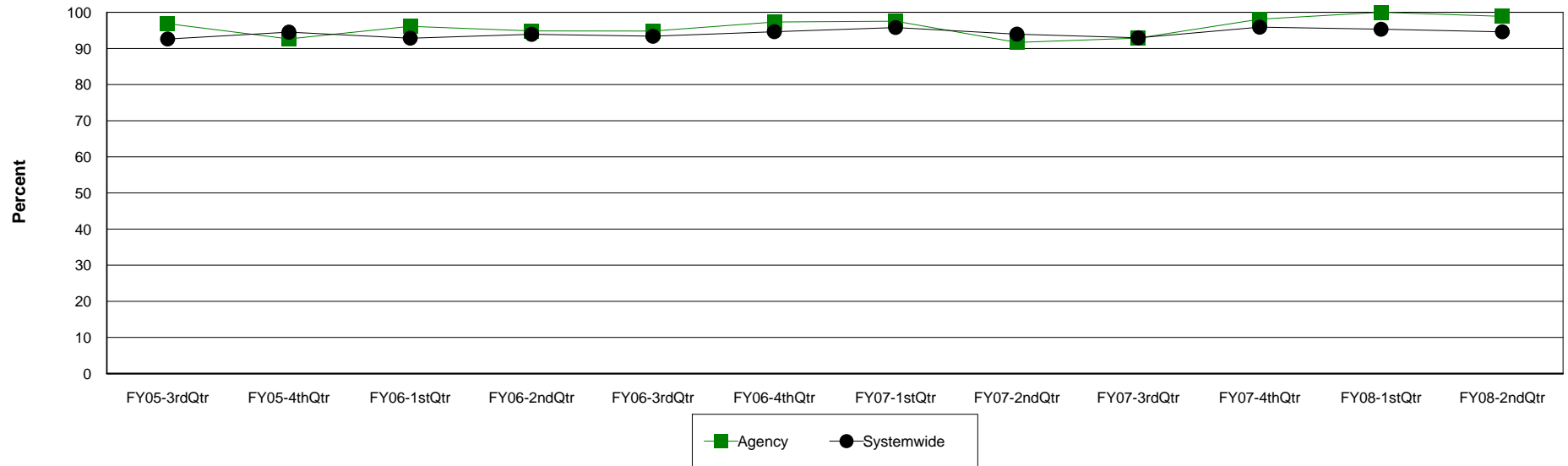
Agency: (640) 12 & 12, INC.

Level of Care: Residential Treatment

Contract Source: (02) ALCOHOL/DRUG

Age Group: Adults (18+)

Community Tenure (90 Days) at 12 & 12, INC.



Agency	FY05-3rdQtr	FY05-4thQtr	FY06-1stQtr	FY06-2ndQtr	FY06-3rdQtr	FY06-4thQtr	FY07-1stQtr	FY07-2ndQtr	FY07-3rdQtr	FY07-4thQtr	FY08-1stQtr	FY08-2ndQtr
Readmitted	93	88	98	92	73	73	80	44	52	52	57	88
Discharges	96	95	102	97	77	75	82	48	56	53	57	89
Percent	96.9%	92.6%	96.1%	94.8%	94.8%	97.3%	97.6%	91.7%	92.9%	98.1%	100.0%	98.9%

Systemwide	FY05-3rdQtr	FY05-4thQtr	FY06-1stQtr	FY06-2ndQtr	FY06-3rdQtr	FY06-4thQtr	FY07-1stQtr	FY07-2ndQtr	FY07-3rdQtr	FY07-4thQtr	FY08-1stQtr	FY08-2ndQtr
Readmitted	639	687	596	661	591	563	567	466	447	557	591	629
Discharges	690	727	642	704	633	595	592	496	481	581	620	665
Percent	92.6%	94.5%	92.8%	93.9%	93.4%	94.6%	95.8%	94.0%	92.9%	95.9%	95.3%	94.6%

Community Tenure (90 Days)-Trend Line

Community Tenure (90 Days) after Discharge/Level of Care Change for the last Twelve Quarters

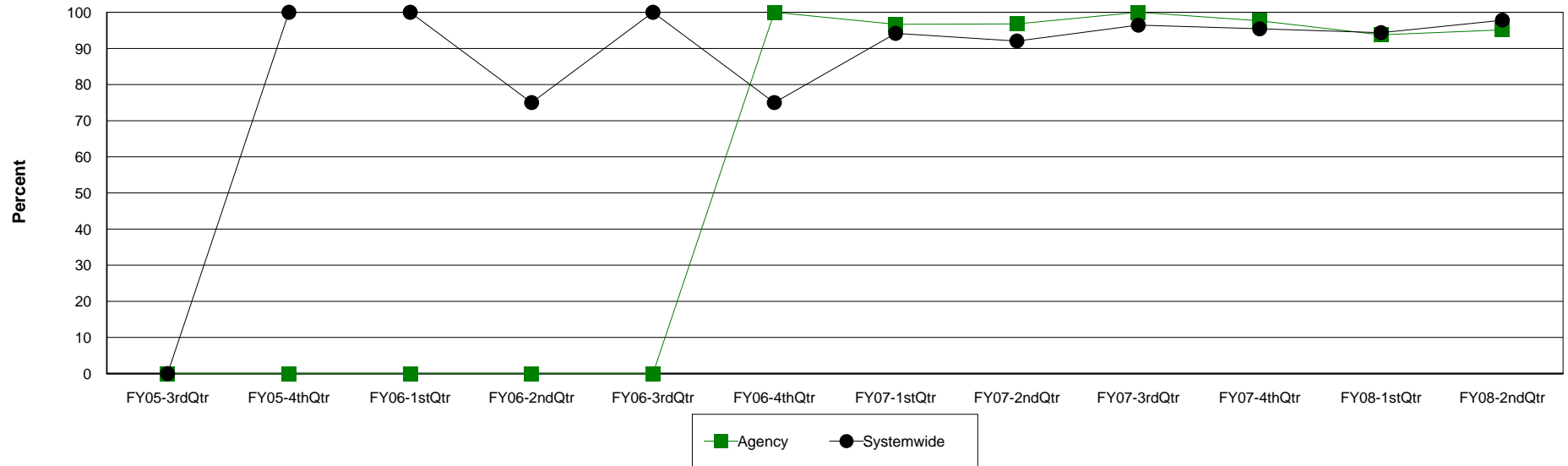
Agency: (640) 12 & 12, INC.

Level of Care: Residential Treatment

Contract Source: (20) DRUG COURT

Age Group: Adults (18+)

Community Tenure (90 Days) at 12 & 12, INC.



Agency	FY05-3rdQtr	FY05-4thQtr	FY06-1stQtr	FY06-2ndQtr	FY06-3rdQtr	FY06-4thQtr	FY07-1stQtr	FY07-2ndQtr	FY07-3rdQtr	FY07-4thQtr	FY08-1stQtr	FY08-2ndQtr
Readmitted	0	0	0	0	0	1	29	30	46	42	45	39
Discharges	0	0	0	0	0	1	30	31	46	43	48	41
Percent	0.0%	0.0%	0.0%	0.0%	0.0%	100.0%	96.7%	96.8%	100.0%	97.7%	93.8%	95.1%

Systemwide	FY05-3rdQtr	FY05-4thQtr	FY06-1stQtr	FY06-2ndQtr	FY06-3rdQtr	FY06-4thQtr	FY07-1stQtr	FY07-2ndQtr	FY07-3rdQtr	FY07-4thQtr	FY08-1stQtr	FY08-2ndQtr
Readmitted	0	1	1	3	6	3	129	139	135	146	100	90
Discharges	0	1	1	4	6	4	137	151	140	153	106	92
Percent	0.0%	100.0%	100.0%	75.0%	100.0%	75.0%	94.2%	92.1%	96.4%	95.4%	94.3%	97.8%

Community Tenure (90 Days)-Trend Line

Community Tenure (90 Days) after Discharge/Level of Care Change for the last Twelve Quarters

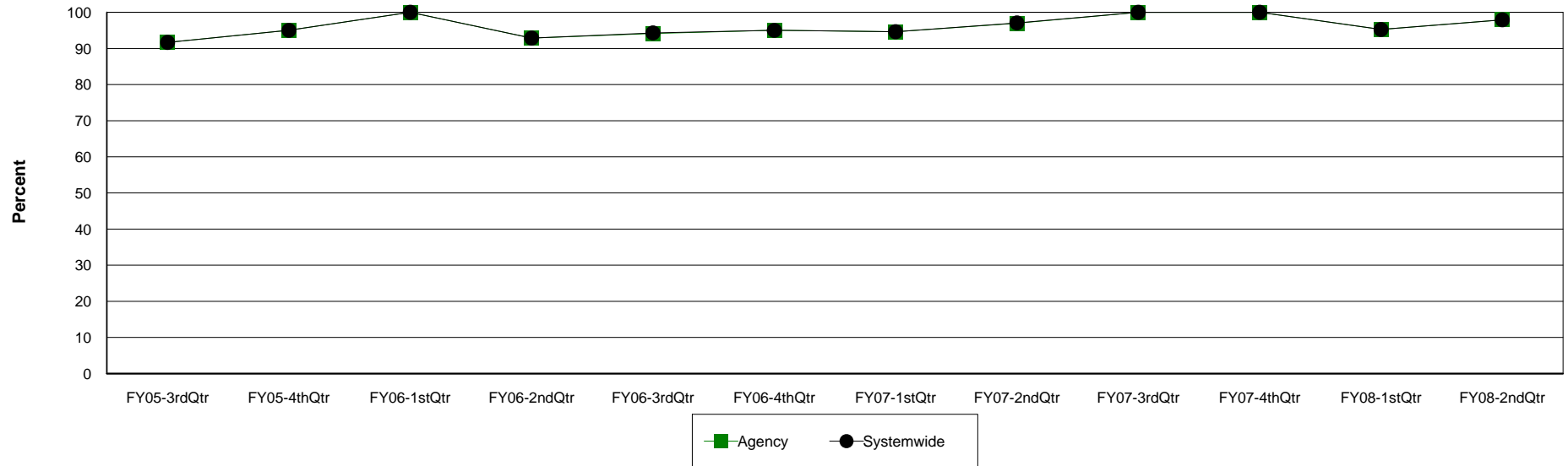
Agency: (640) 12 & 12, INC.

Level of Care: Residential Treatment

Contract Source: (21) ALCOHOL/DRUG SPECIALIZED PROGRAMS

Age Group: Adults (18+)

Community Tenure (90 Days) at 12 & 12, INC.



Agency	FY05-3rdQtr	FY05-4thQtr	FY06-1stQtr	FY06-2ndQtr	FY06-3rdQtr	FY06-4thQtr	FY07-1stQtr	FY07-2ndQtr	FY07-3rdQtr	FY07-4thQtr	FY08-1stQtr	FY08-2ndQtr
Readmitted	33	38	53	52	32	38	35	32	40	41	40	47
Discharges	36	40	53	56	34	40	37	33	40	41	42	48
Percent	91.7%	95.0%	100.0%	92.9%	94.1%	95.0%	94.6%	97.0%	100.0%	100.0%	95.2%	97.9%

Systemwide	FY05-3rdQtr	FY05-4thQtr	FY06-1stQtr	FY06-2ndQtr	FY06-3rdQtr	FY06-4thQtr	FY07-1stQtr	FY07-2ndQtr	FY07-3rdQtr	FY07-4thQtr	FY08-1stQtr	FY08-2ndQtr
Readmitted	33	38	53	52	33	38	35	33	40	41	40	47
Discharges	36	40	53	56	35	40	37	34	40	41	42	48
Percent	91.7%	95.0%	100.0%	92.9%	94.3%	95.0%	94.6%	97.1%	100.0%	100.0%	95.2%	97.9%

Community Tenure (90 Days)-Trend Line

Community Tenure (90 Days) after Discharge/Level of Care Change for the last Twelve Quarters

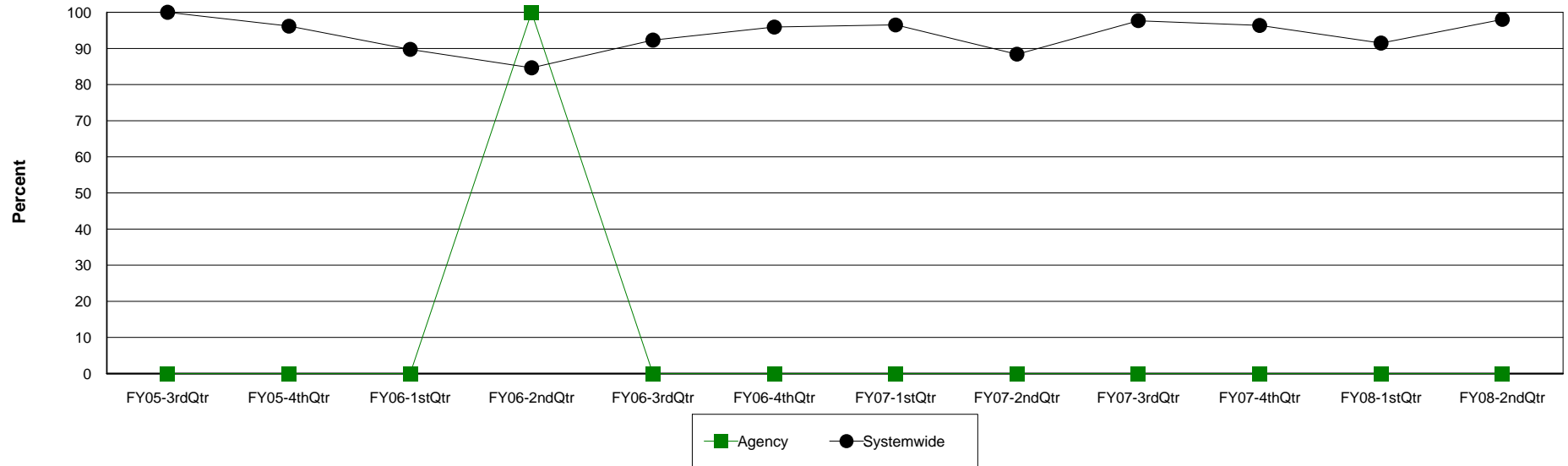
Agency: (640) 12 & 12, INC.

Level of Care: Residential Treatment

Contract Source: All Substance Abuse Contract Sources (PPMR)

Age Group: Children (0-17)

Community Tenure (90 Days) at 12 & 12, INC.



Agency	FY05-3rdQtr	FY05-4thQtr	FY06-1stQtr	FY06-2ndQtr	FY06-3rdQtr	FY06-4thQtr	FY07-1stQtr	FY07-2ndQtr	FY07-3rdQtr	FY07-4thQtr	FY08-1stQtr	FY08-2ndQtr
Readmitted	0	0	0	1	0	0	0	0	0	0	0	0
Discharges	0	0	0	1	0	0	0	0	0	0	0	0
Percent	0.0%	0.0%	0.0%	100.0%	0.0%	0.0%	0.0%	0.0%	0.0%	0.0%	0.0%	0.0%

Systemwide	FY05-3rdQtr	FY05-4thQtr	FY06-1stQtr	FY06-2ndQtr	FY06-3rdQtr	FY06-4thQtr	FY07-1stQtr	FY07-2ndQtr	FY07-3rdQtr	FY07-4thQtr	FY08-1stQtr	FY08-2ndQtr
Readmitted	19	25	35	44	48	47	55	61	42	53	43	50
Discharges	19	26	39	52	52	49	57	69	43	55	47	51
Percent	100.0%	96.2%	89.7%	84.6%	92.3%	95.9%	96.5%	88.4%	97.7%	96.4%	91.5%	98.0%

Community Tenure (90 Days)-Trend Line

Community Tenure (90 Days) after Discharge/Level of Care Change for the last Twelve Quarters

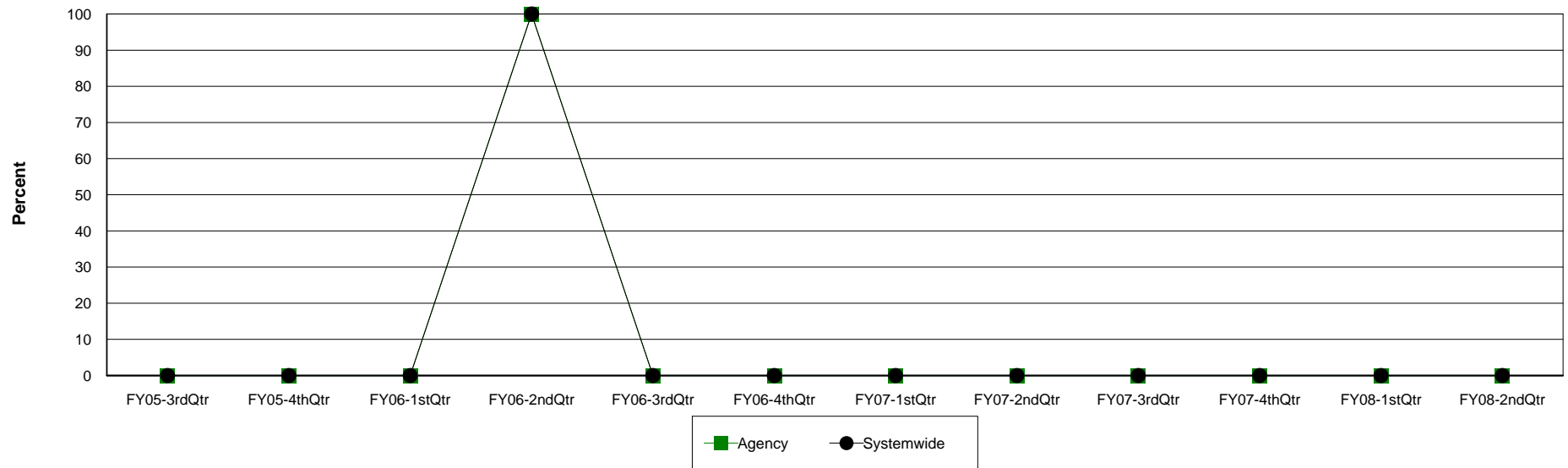
Agency: (640) 12 & 12, INC.

Level of Care: Residential Treatment

Contract Source: (21) ALCOHOL/DRUG SPECIALIZED PROGRAMS

Age Group: Children (0-17)

Community Tenure (90 Days) at 12 & 12, INC.



Agency	FY05-3rdQtr	FY05-4thQtr	FY06-1stQtr	FY06-2ndQtr	FY06-3rdQtr	FY06-4thQtr	FY07-1stQtr	FY07-2ndQtr	FY07-3rdQtr	FY07-4thQtr	FY08-1stQtr	FY08-2ndQtr
Readmitted	0	0	0	1	0	0	0	0	0	0	0	0
Discharges	0	0	0	1	0	0	0	0	0	0	0	0
Percent	0.0%	0.0%	0.0%	100.0%	0.0%	0.0%	0.0%	0.0%	0.0%	0.0%	0.0%	0.0%

Systemwide	FY05-3rdQtr	FY05-4thQtr	FY06-1stQtr	FY06-2ndQtr	FY06-3rdQtr	FY06-4thQtr	FY07-1stQtr	FY07-2ndQtr	FY07-3rdQtr	FY07-4thQtr	FY08-1stQtr	FY08-2ndQtr
Readmitted	0	0	0	1	0	0	0	0	0	0	0	0
Discharges	0	0	0	1	0	0	0	0	0	0	0	0
Percent	0.0%	0.0%	0.0%	100.0%	0.0%	0.0%	0.0%	0.0%	0.0%	0.0%	0.0%	0.0%