

SUMMARY

of the

Performance & Outcomes Monitoring Report

This Summary of The FY2001 Mental Health Performance and Outcomes Monitoring Report has been prepared for use by consumers, advocates, planners, treatment providers, administrators and other decision-makers. Contained within are performance and outcome indicators based on a framework adopted by the National Association of State Mental Health Program Directors (NASMHPD).

The indicators are presented in the form of charts that summarize statewide information for (1) all clients, (2) adults with a serious mental illness (SMI), and (3) children with a serious emotional disturbance (SED). Data utilized for analyses were limited to clients whose services were funded in whole or in part by the Oklahoma Department of Mental Health and Substance Abuse Services. In addition, clients had to be formally admitted and receive a service during the fiscal year.

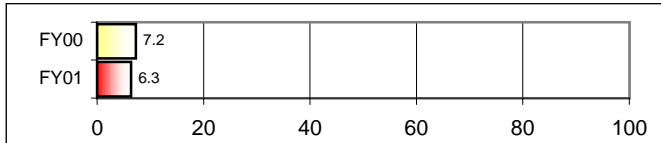
These indicators are not exact measures but can be used to assess overall system functioning and to identify successful combinations of services for specific groups of clients. Further, the extent to which services improve for target groups, such as persons with serious mental illness, can be gauged from the presentation of both FY00 and FY01 data. Re-allocation of existing resources or planning for new services may result as lawmakers, agency directors and department executives utilize this information to better serve the citizens of Oklahoma.

A more detailed description of the data presented in this Summary is available in Volume One of the Performance & Outcomes Monitoring Report.

Meaningful Employment

Of the clients (18-60 years old) served in FY01, 36.7% were not meaningfully employed at admission. The percent of clients obtaining meaningful employment varied among all CMHCs from 1.9% to 11.8% with a statewide median of 6.3%. When compared with FY00, the percent increased in FY01 among 9 of the 19 CMHCs.

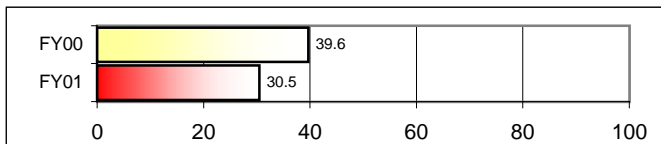
Percent of Consumers Who Become Meaningfully Employed



Independent Housing

Of the clients (age 18-60) served in FY01, 4.3% were not living in independent housing at admission. The percent moving to independent housing varied among all CMHCs from 15.6% to 66.7% with a statewide median of 30.5%. When compared with FY00, the percent increased in FY01 among 7 of the 19 CMHCs.

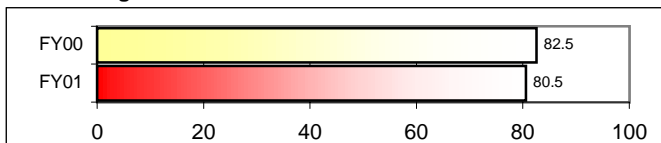
Percent of Consumers Moving to Independent Housing During Treatment



Adult Level of Functioning

In FY01 the percent of adults with an improved or maintained level of functioning varied among all CMHCs from 62.6% to 91.7%, with a statewide median of 80.5%. When compared with FY00, the percent with an improved or maintained level of functioning increased in FY01 among 13 of the 19 CMHCs.

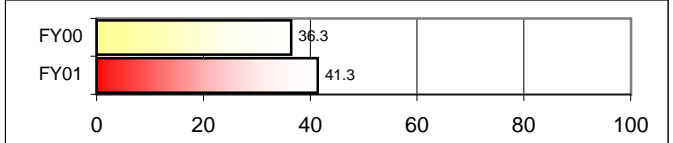
Percent of Consumers Maintaining or Improving in Level of Functioning



Adult Level of Functioning

In FY01 the percent of adults with an improved level of functioning varied among all CMHCs from 20.4% to 60.2%, with a statewide median of 41.3%. When compared with FY00, the percent with an improved level of functioning increased in FY01 among 10 of the 19 CMHCs.

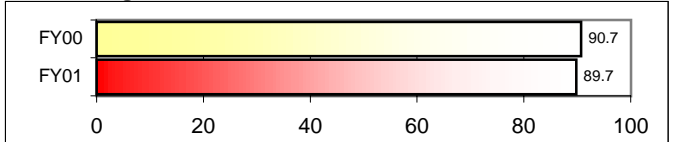
Percent of Consumers Experiencing an Improvement in Level of Functioning



Children's Level of Functioning

In FY01 the percent of children with an improved or maintained level of functioning varied among all CMHCs from 68.8% to 96.9%, with a statewide median of 89.7%. When compared with FY00, the percent with an improved or maintained level of functioning increased in FY01 among 10 of the 19 CMHCs.

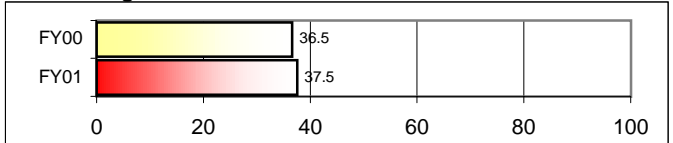
Percent of Children Maintaining or Improving in Level of Functioning



Children's Level of Functioning

In FY01 the percent of children with an improved level of functioning varied among all CMHCs from 11.1% to 79.6%, with a statewide median of 37.5%. When compared with FY00, the percent with an improved level of functioning increased in FY01 among 10 of the 19 CMHCs.

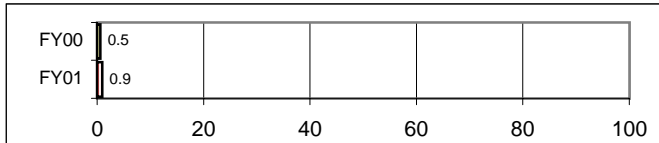
Percent of Children Experiencing an Improvement in Level of Functioning



Outreach Services

In FY01 the percent of outreach services varied among all CMHCs from 0% to 5.9%, with a statewide mean of 0.9%. When compared with FY00, the percent of outreach services increased in FY01 at 8 of the 19 CMHCs.

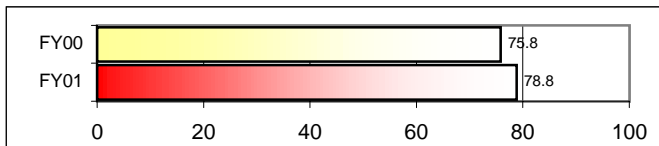
Percent of Outpatient Services Which are Outreach Services



Adults with SMI Served

In FY01 the percent of adults served with SMI varied among all agencies from 45.7% to 97.2%, with a statewide median of 78.8%. When compared with FY00, the percent receiving services increased in FY01 among 8 of the 19 CMHCs.

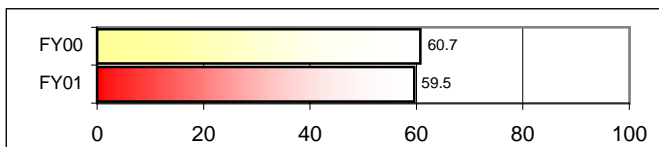
Percent of Adults Served with SMI



Children with SED Served

In FY01 the percent of children served with SED varied among all CMHCs from 14.6% to 85.6%, with a statewide median of 59.5%. When compared with FY00, the percent receiving services increased in FY01 among 6 of the 19 CMHCs.

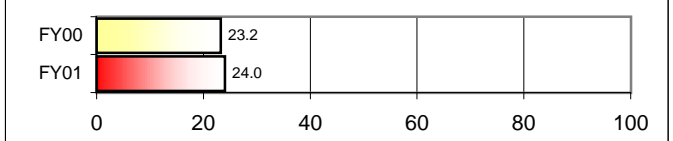
Percent of Children Served with SED



Services Outside the Facility

In FY01 the percent of services provided outside of the agencies' physical locations varied from 3.7% to 67.5%, with a statewide median of 24.0%. When compared with FY00, the percent increased in FY01 among 14 of the 19 CMHCs.

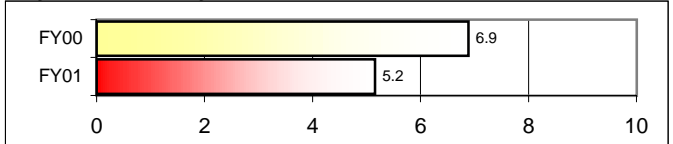
Percent of Services Received Outside of the Agency



Days To Community Service

In FY01 the average number of days from inpatient discharge to community-based service varied among all CMHCs from 1.2 days to 9.9 days, with a statewide median of 5.2 days. When compared with FY00, the average number of days decreased in FY01 at 13 of the 19 CMHCs.

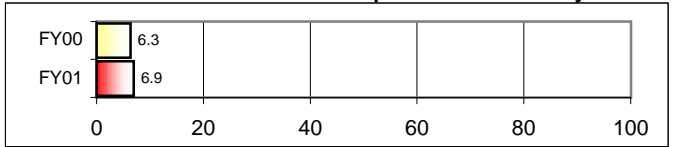
Days to Community-Based Service



Inpatient Re-admissions

In FY01 the percent of adults re-admitted to inpatient within 30 days of discharge varied among all CMHCs from 0% to 14.3%, with a statewide median of 6.9%. When compared with FY00, the percent re-admitted decreased in FY01 at 9 of the 19 CMHCs.

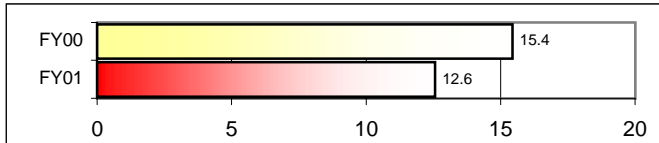
Percent of Clients Re-admitted to Inpatient within 30 Days



Inpatient Stay

In FY01 the median number of inpatient days varied among all CMHCs from 7.8 days to 40.6 days, with a statewide median of 12.6 days. When compared with FY00, the median number of inpatient days decreased in FY01 at 13 of the 19 CMHCs.

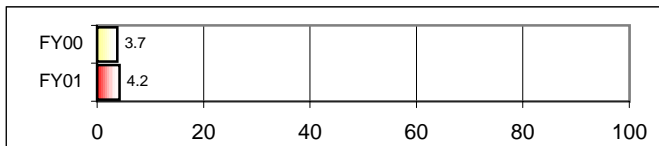
Median Number of Days in Inpatient Treatment



Involuntary Admissions

In FY01 the percent of adults admitted involuntarily to inpatient treatment varied among all CMHCs from 2.3% to 10.5%, with a statewide median of 4.2%. When compared with FY00, ten CMHCs decreased the percent admitted involuntarily in FY01.

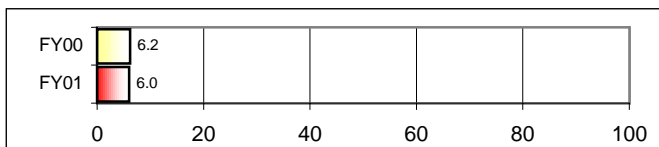
Percent of Consumers Involuntarily Admitted to Inpatient Treatment



Crisis Services after Inpatient

In FY01 the percent of clients receiving crisis services as their first service after inpatient treatment varied among all CMHCs from 0% to 28.6%, with a statewide median of 6.0%. Compared with FY00, nine CMHCs decreased the percent receiving crisis services in FY01.

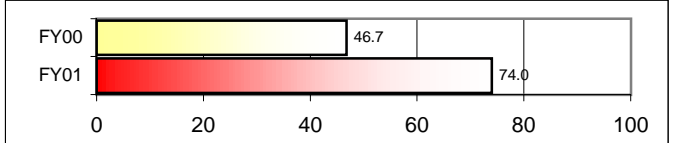
Percent of Consumers Receiving Crisis Services After Inpatient Treatment



Inpatient Follow-up

In FY01 the percent of clients receiving a lower level of care within 14 days of discharge from inpatient varied among all CMHCs from 35.9% to 96.5%, with a statewide median of 74.0%. Compared with FY00, the percent receiving a lower level of care increased in FY01 among 16 of the 19 CMHCs.

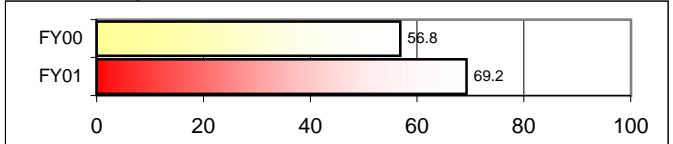
Percent of Inpatient Services Followed by a Lower Level of Care within 14 Days



Adult Crisis Follow-up

The percent of adults receiving a lower level of care within 14 days of discharge from inpatient varied among all CMHCs from 45.3% to 100.0%, with a statewide median of 69.2%. Compared with FY00, the percent increased in FY01 among 14 of the 19 CMHCs.

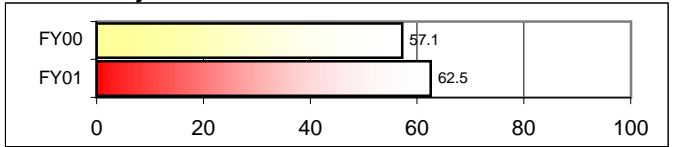
Percent of Crisis Events Followed by a Lower Level of Care within 14 Days



Child Crisis Follow-up

In FY01 the percent of children receiving a lower level care within 14 days after a crisis event varied among 18 CMHCs from 0% to 100.0%, with a statewide median of 62.5%. Compared with FY00, the percent increased in FY01 among 11 of the 18 CMHCs.

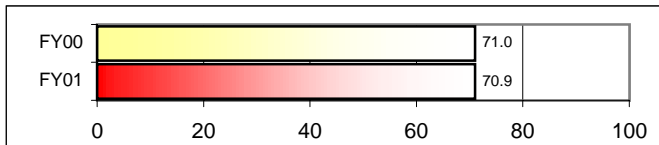
Percent of Crisis Events Followed by a Lower Level of Care within 14 Days



Structured Emer. Care Follow-up

In FY01 the percent of clients receiving a lower level of care within 14 days of structured emergency care varied among CMHCs from 47.6% to 100.0%, with a statewide median of 70.9%. Compared with FY00, 12 CMHCs increased the percent of clients receiving a lower level of care in FY01.

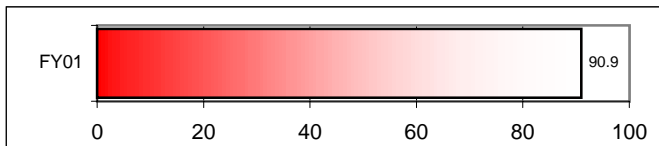
Structured Emergency Care Followed by a Lower Level of Care within 14 Days



Satisfaction

The percent of consumers who reported satisfaction with treatment varied among all CMHCs from 77.3% to 100%, with a statewide mean of 90.9%.

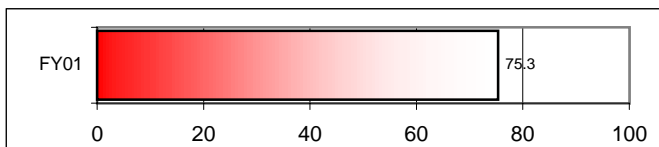
Percent of Consumers Satisfied with Treatment



Outcome

The percent of consumers who rated their outcomes of treatment positively varied among all CMHCs from 68.4% to 85.1%, with a statewide mean of 75.3%

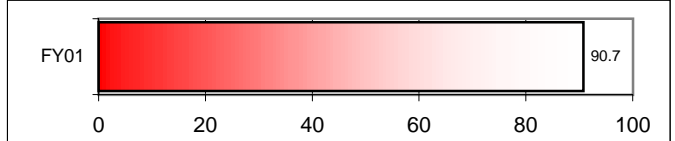
Percent of Consumers Reporting Positive Outcomes of Treatment



Quality

The percent of consumers who rated the quality of the mental health treatment they received positively varied among all CMHCs from 72.7% to 97.4%, with statewide mean of 90.7%.

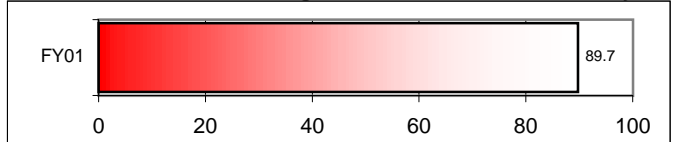
Percent of Consumers Rating the Quality of Treatment Positively



Access

The percent of consumers who rated access to treatment positively varied among all CMHCs from 77.3% to 95.5%, with statewide mean of 89.7%.

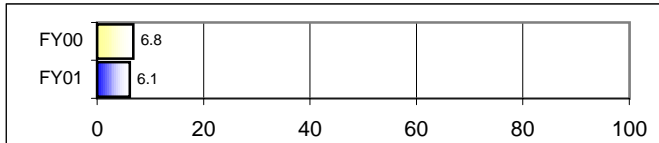
Percent of Consumers Rating Access to Treatment Positively



Meaningful Employment

Among all adults with SMI receiving services in FY01, 42.2% were not meaningfully employed at admission. The percent in FY01 who obtained meaningful employment varied among all CMHCs from 1.8% to 12.1% with a statewide median of 6.1%. Compared with FY00, the percent increased in FY01 among 11 of the 19 CMHCs.

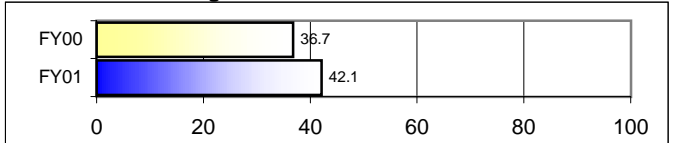
Percent of Consumers Who Become Meaningfully Employed



Level of Functioning

In FY01 the percent of adults with SMI with an improved level of functioning varied among all CMHCs from 20.4% to 65.9%, with a statewide median of 42.1%. Compared with FY00, the percent with improved level of functioning increased in FY01 among 10 of the 19 CMHCs.

Percent of Adults with SMI Experiencing an Improvement in Level of Functioning



Independent Housing

Of the adults with SMI receiving services in FY01, 5.3% were not living in independent housing at admission. The percent who moved to independent housing varied among all CMHCs from 15.8% to 67.8% with a statewide median of 31.6%. Compared with FY00, the percent who moved to independent housing increased in FY01 among 9 of the 19 CMHCs.

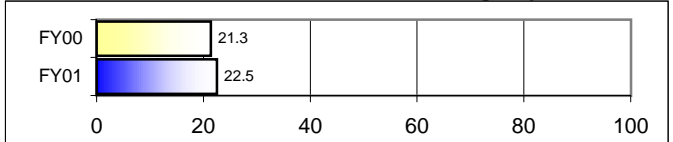
Percent of Adults with SMI Moving into Independent Housing



Services Outside the Facility

In FY01 the percent of services provided outside of the agencies' physical locations for adults with SMI varied from 3.6% to 68.6%, with a statewide median 22.5%. When compared with FY00, the percent of services increased in FY01 among 9 of the 19 CMHCs.

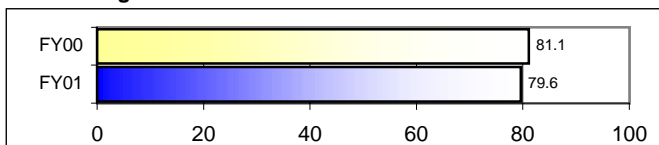
Percent of Services Received Outside of the Agency



Level of Functioning

In FY01 the percent of adults with SMI with an improved or maintained level of functioning varied among all CMHCs from 62.4% to 91.2%, with a statewide median of 79.6%. Compared with FY00, the percent of clients who maintained or improved level of functioning increased in FY01 among 11 of the 19 CMHCs.

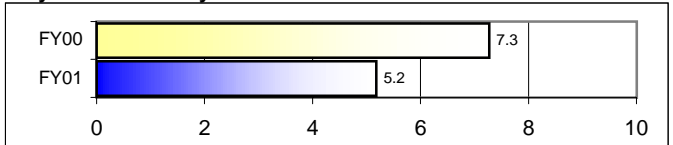
Percent of Adults with SMI Maintaining or Improving in Level of Functioning



Days To Community Service

In FY01 the average number of days from inpatient discharge to community-based service for adults with SMI varied among all CMHCs from 1.2 days to 10.1 days, with a statewide median of 5.2 days. Compared with FY00, the average number of days decreased in FY01 among 13 of the 19 CMHCs.

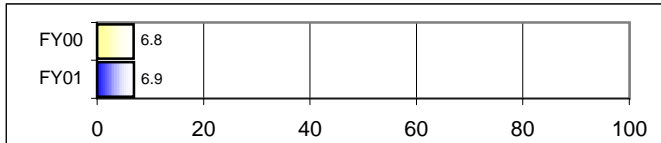
Days to Community-Based Service



Inpatient Re-admissions

In FY01 the percent of adults with SMI re-admitted within 30 days of discharge from inpatient varied among all CMHCs from 0% to 25.0%, with a statewide median of 6.9%. Compared with FY00, the percent re-admitted decreased in FY01 among 9 of the 19 CMHCs.

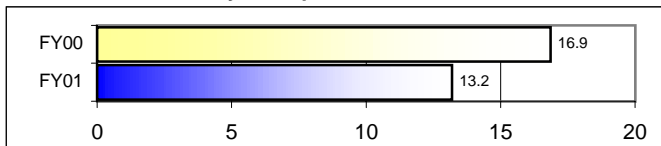
Percent of Clients Re-admitted to Inpatient within 30 Days



Inpatient Stay

In FY01 the median number of inpatient days for adults with SMI varied among all CMHCs from 10.3 days to 40.6 days, with a statewide median of 13.2 days. Compared with FY00, the median number of inpatient days decreased in FY01 among 13 of the 19 CMHCs.

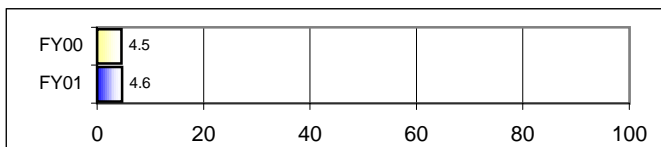
Median Number of Days in Inpatient Treatment



Involuntary Admissions

In FY01 the percent of adults with SMI admitted involuntarily to inpatient treatment varied among all CMHCs from 2.4% to 14.3%, with a statewide median of 4.6%. Compared with FY00, the percent admitted involuntarily decreased in FY01 among 10 of the 19 CMHCs.

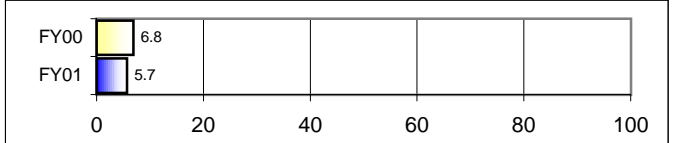
Percent of Adults with SMI Involuntarily Admitted to Inpatient Treatment



Crisis Services after Inpatient

In FY01 the percent of adults with SMI receiving a crisis service as their first service following inpatient treatment varied among all CMHCs from 0% to 27%, with a statewide median of 5.7%. Compared with FY00, the percent decreased in FY01 among 10 of the 19 CMHCs.

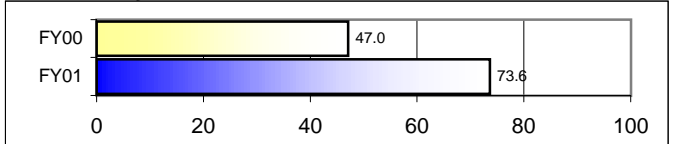
Percent of Adults with SMI Who Receive Crisis Services Following Inpatient Treatment



Inpatient Follow-up

In FY01 the percent of adults with SMI receiving a lower level of care within 14 days of inpatient discharge varied among all CMHCs from 35.7% to 97.2%, with a statewide median of 73.6%. Compared with FY00, the percent increased in FY01 among 16 of the 19 CMHCs.

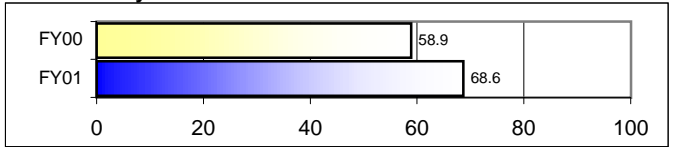
Percent of Inpatient Services Followed by a Lower Level of Care within 14 Days



Crisis Follow-up

In FY01 the percent of adults with SMI receiving a lower level of care within 14 days of a crisis event varied among all CMHCs from 45.1% to 100%, with a statewide median of 68.6%. Compared with FY00, the percent increased in FY01 among 14 of the 19 CMHCs.

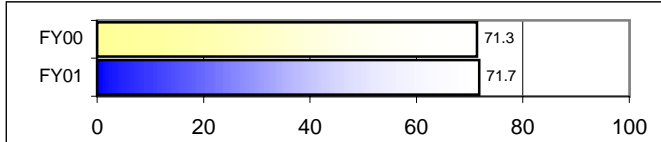
Percent of Crisis Events Followed by a Lower Level of Care within 14 Days



Structured Emer. Care Follow-up

In FY01 the percent of adults with SMI receiving a lower level of care within 14 days of receiving structured emergency care services varied among all CMHCs from 47.6% to 100%, with a statewide median of 71.7%. Compared with FY00, 12 CMHCs increased the percent receiving a lower level of care in FY01.

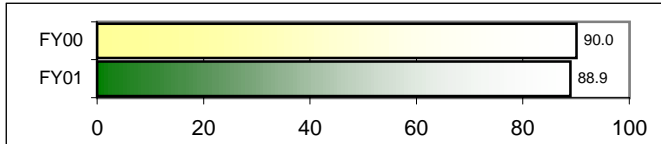
Structured Emergency Care Followed by a Lower Level of Care within 14 Days



Children's Level of Functioning

In FY01 the percent of children with SED with an improved or maintained level of functioning varied among all CMHCs from 67.6% to 100%, with a statewide median of 88.9%. Compared with FY00, 10 CMHCs increased the percent with an improved or maintained level of functioning in FY01.

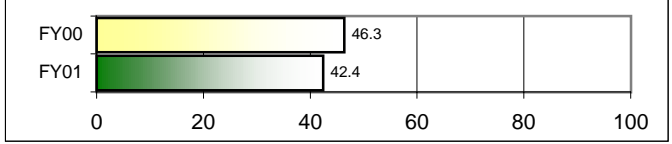
Percent of Children Maintaining or Improving in Level of Functioning



Services Outside the Facility

In FY01 the percent of services provided outside of the agencies' physical locations for children with SED varied among agencies from 0% to 82%, with a statewide median of 42.4%. When compared with FY00, the percent increased in FY01 among 11 of the 19 CMHCs.

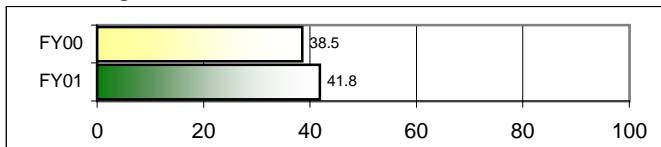
Percent of Services Received Outside of the Agency



Children's Level of Functioning

In FY01 the percent of children with SED with an improved level of functioning varied among all CMHCs from 0% to 78.5%, with a statewide median of 41.8%. Compared with FY00, the percent of clients with an improved level of functioning increased in FY01 among 10 of the 19 CMHCs.

Percent of Children Experiencing an Improvement in Level of Functioning



Crisis Follow-up

In FY01 the percent of children with SED who received a lower level care within 14 days after a crisis event varied among the 16 CMHCs providing the service from 0% to 100.0%, with a statewide median of 63.3%. Compared with FY00, six CMHCs increased the percent who received a lower level care in FY01.

Percent of Crisis Events Followed by a Lower Level of Care within 14 Days

