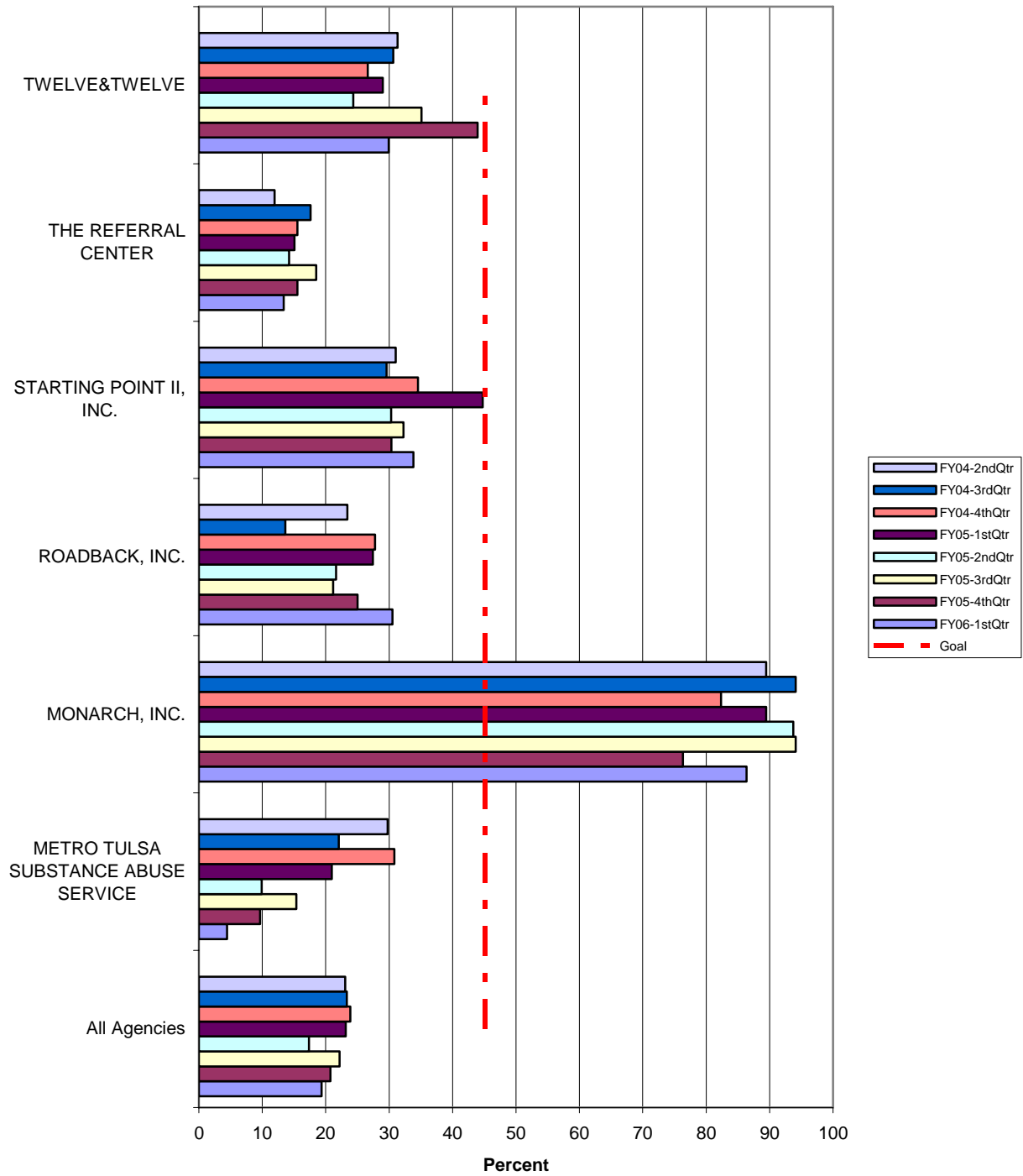


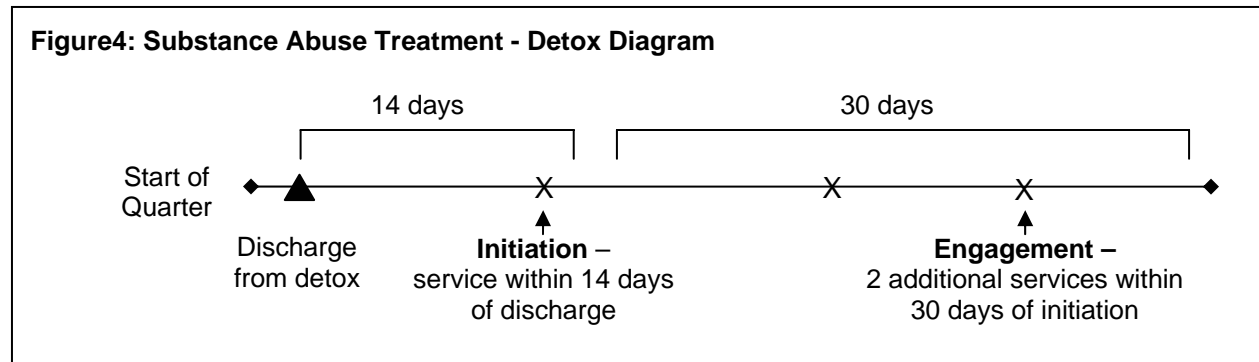
Substance Abuse

Measure SA2b: Initiation of Treatment Services Following Detoxification Services

Figure 3: Detox Initiation



Rationale for measurement: Persons who receive treatment following a detox service are more likely to maintain abstinence.



Goal: The goal for this indicator has been established at 1/2 the standard deviation above the state average for the last eight quarters; i.e., a follow-up rate of 45%.

Current Status: Statewide rate: 19%. Met Goal: MONARCH met the goal (more than one half of the standard deviation above the state average).

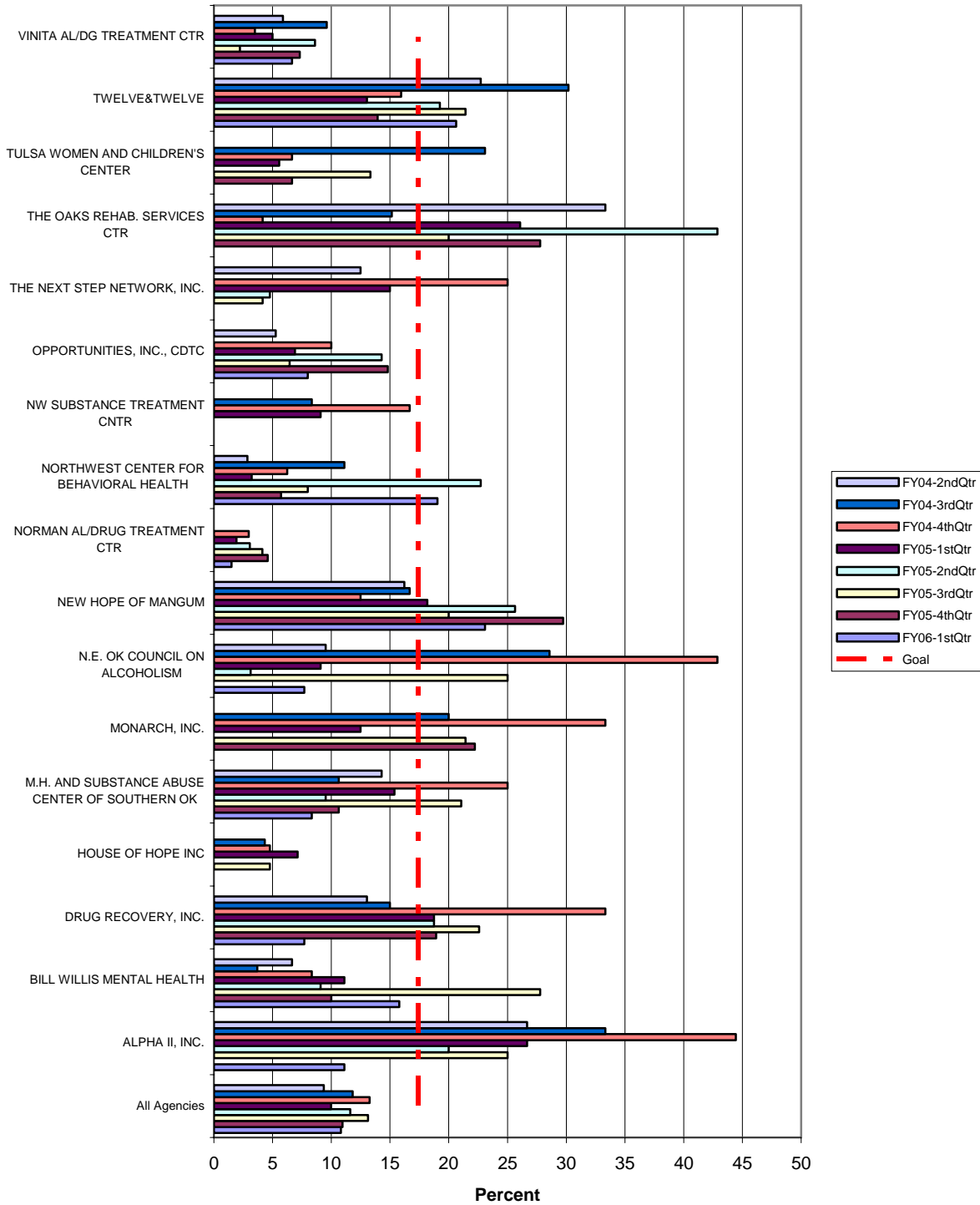
Trends: The state rate declined from the previous quarter's rate of 22% to 19%. Three of the agencies showed an improvement in the 1st Quarter of FY06 from the previous quarter.

Responding Providers: (to be added following providers' review and responses this quarter)

Improvement Strategies Suggested or Actions Taken by Providers: (previous reported actions can be found in earlier reports):

Measure SA3c: Engagement in Lower Levels of Treatment Following Residential Treatment

Figure 5: Residential Treatment Engagement



Rationale for measurement: The longer persons remain in treatment, the better their outcomes will be.



Goal: The goal for this indicator has been established at 1/2 the standard deviation above the state average for the last eight quarters; i.e., a follow-up rate of 17%.

Current Status: Statewide rate: 10.8%. Met Goal: Twelve and Twelve, The Oaks, Northwest Center for Behavioral Health and New Hope of Mangum met the goal (more than one half of the standard deviation above the state average).

Trends: The state rate declined slightly from the previous quarter's rate (from 11% to 10.8%). Four of the agencies saw an increase from the previous quarter.

Responding Providers: (to be added following providers' review and responses this quarter)

Improvement Strategies Suggested or Actions Taken by Providers: (previous reported actions can be found in earlier reports):

PERFORMANCE MEASURES - SUBSTANCE ABUSE

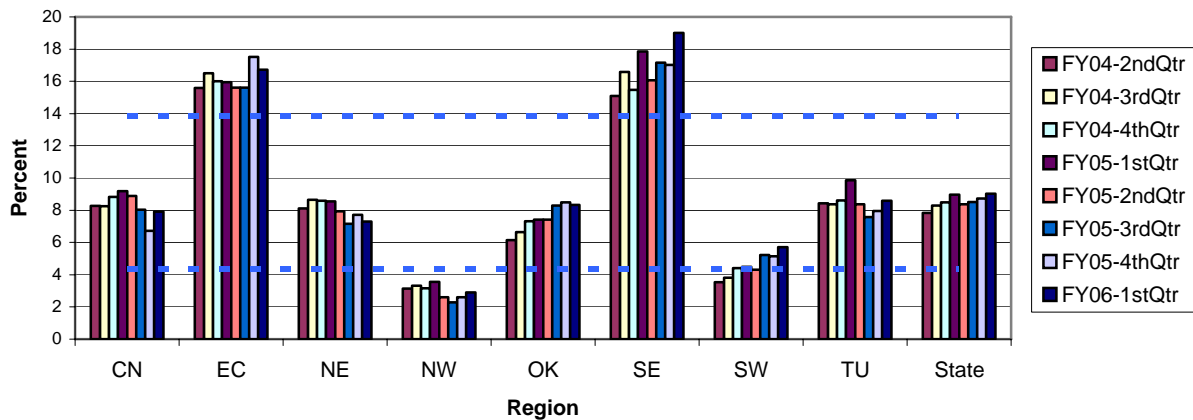
The indicators of substance abuse treatment performance used in this report are measures developed by the Washington Circle with support from the federal Center for Substance Abuse Treatment (CSAT). The indicators focus on early recognition and intervention which can positively affect the course of an individual's problem with alcohol and other drugs. The indicators measure the extent to which persons in need are identified, initiated into treatment and engaged to stay in treatment.

Measure SA1: Identification

Persons were considered "identified" (as substance abusers in need of treatment) if they received a substance abuse service in the quarter. There were 4,024 persons identified among those in need of treatment during the 1st Quarter of FY06. Persons were identified by the first level of substance abuse services they used:

Outpatient – 1,870 clients (46.5%)	Residential – 887 clients (22%)
Detoxification – 1,123 clients (28%)	Community Living – 144 clients (3.5%)

**Figure 19: Adults in Poverty Estimated to Need Treatment
Percent "Identified" by Receiving Treatment**



Statewide, the percent of the estimated number of adults in need of substance abuse treatment that received a substance abuse service has remained fairly constant for the last eight quarters, with rate of 9% occurring in the most recent quarter (Figure 19).

A high percentage of adults with substance abuse problems in the EC and SE regions received a substance abuse service (16.7% and 19%, respectively); their rates of identification were more than one standard deviation above the state average for all eight quarters measured. A low percentage of adults with substance abuse problems (2.9%) in the NW region received a substance abuse service in the last quarter. The NW region has been more than one standard deviation below the state average in all eight quarters measured.

Measure SA2a: Initiation Into Outpatient Treatment

Among those persons who received a first (index) substance abuse service in the quarter (with no services in the past 60 days), initiation rates were calculated based on the level of care in which the persons were first served. Initiation for residential and community living services were not included in the indicators because nearly all clients initiated residential and community living treatment (as defined by the Washington Circle) by remaining in treatment a second day. The Initiation indicator was trended by

outpatient and detoxification services separately because of the variation in the percent of clients initiating treatment in the two levels of care.

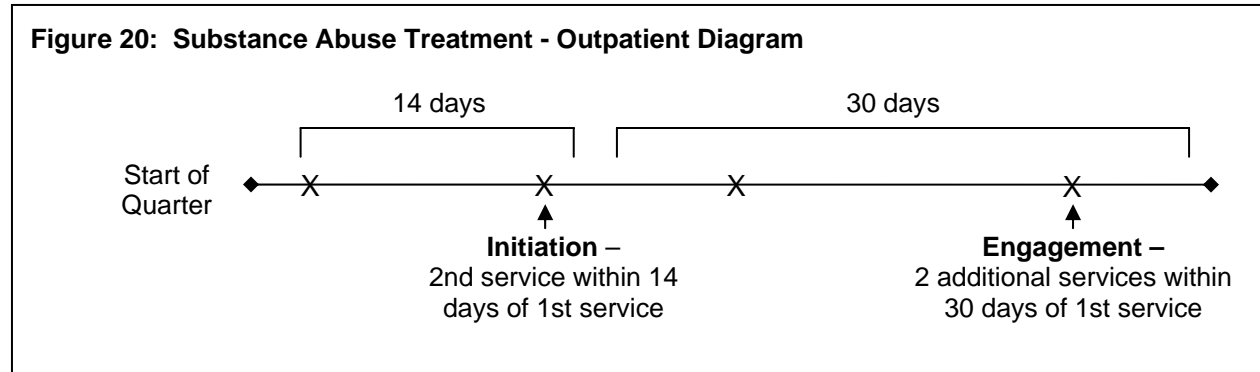
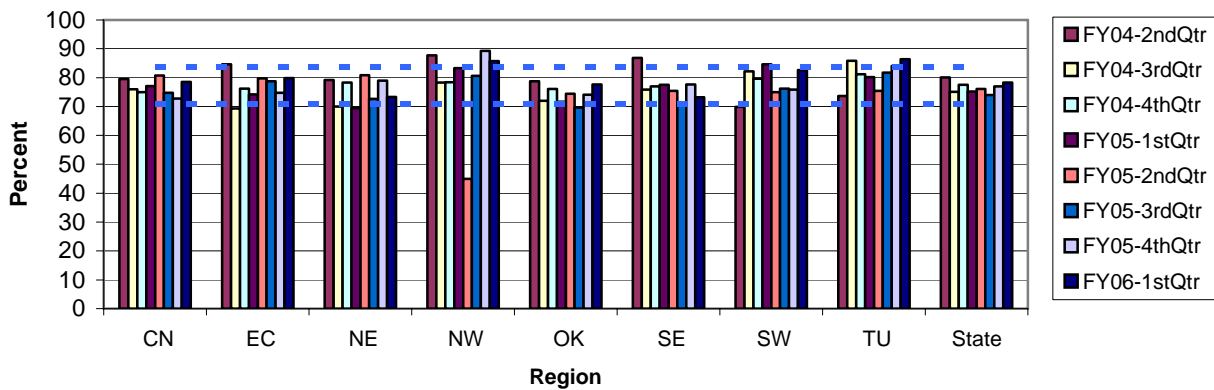


Figure 21: Initiation of Substance Abuse Treatment Following a First Outpatient Service

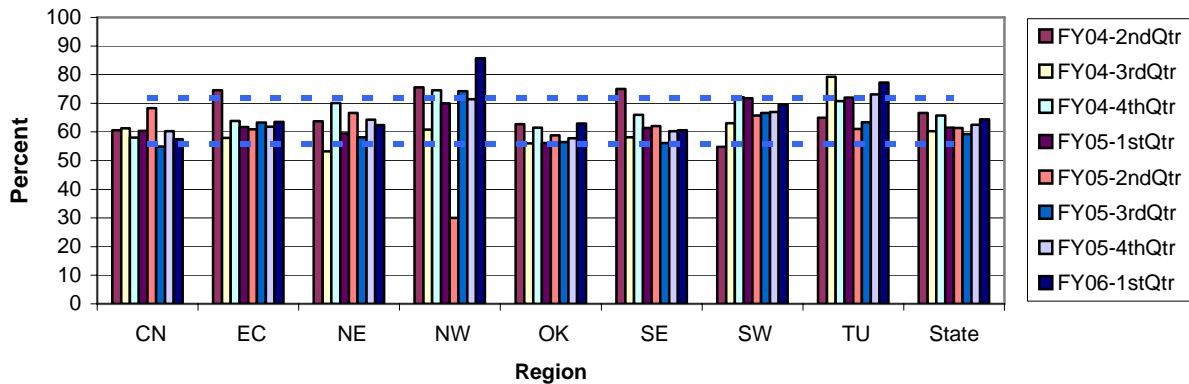


As shown in Figure 21, statewide, 78% of adults with first treatment episodes, who started treatment in outpatient care, *initiated* treatment (had a second service within 14 days, refer to Figure 20 for diagram). The NW and TU regions were more than one standard deviation above the state average at 86% each for the 1st Quarter of FY06.

Measure SA2b: Initiation Following Detox Services – See Section I: Focus Indicators

Measure SA3a: Engagement in Outpatient Treatment

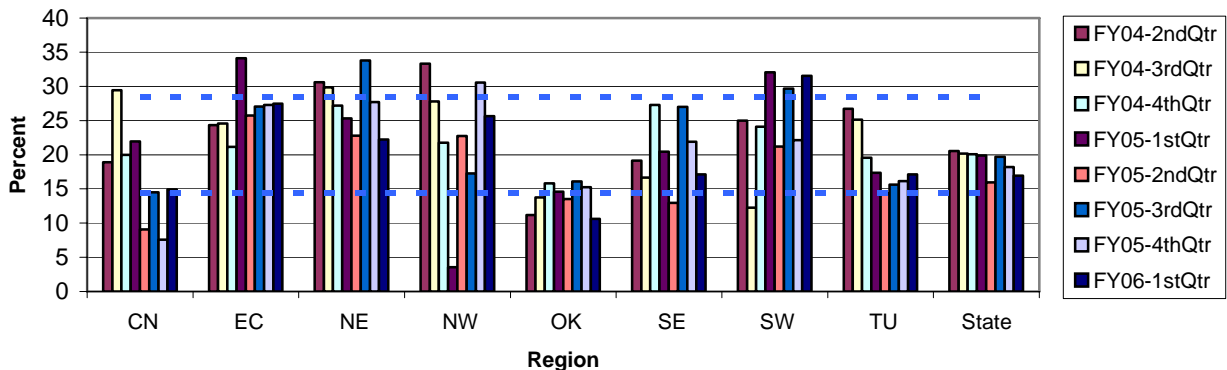
Figure 22: Engagement in Substance Abuse Treatment Following a First Outpatient Service



As shown in Figure 22, during the 1st Quarter of FY06, 64% of clients who started treatment in outpatient care *engaged* in treatment (initiated treatment within 14 days after an initial outpatient service and had two more services within 30 days following initiation – Figure 20). This fell within the eight-quarter range of 60% to 66%. The NW and TU regions were more than one standard deviation above the state average at 77% and 86%, respectively, in the 1st Quarter of FY06.

Measure SA3b: Engagement Following Detox Services

Figure 23: Engagement in Substance Abuse Treatment Following a First Detoxification Service



Of the clients who started treatment with detoxification services, 17% *engaged* in treatment (had one service within 14 days of discharge from detoxification services and two additional services within 30 days of the first post-discharge service - refer to Figure 3, page 11). This rate of engagement has remained fairly consistent falling in the two-year range of 16% to 20% (Figure 23). The SW region was more than one standard deviation above the state average at 32%.

Measure SA3c: Engagement Following Residential Treatment – See Section I: Focus Indicators