

# Level of Functioning - Pie Chart (1 Point Change)

Increased Level of Functioning (1 Pt.) for Individuals Active in Outpatient Treatment on 12/31/2007  
or Discharged between 01/01/2007 and 12/31/2007  
at (554) GRAND LAKE M.H.C.

Printed Date: 2/9/2008 Data Last Updated on: 02/03/2008

## Report Description:

National Outcome Measures (NOMs): <http://www.nationaloutcomemeasures.samhsa.gov/>

Domain: Reduced Morbidity

Outcome: Decreased Symptomatology

Measure: Change in level of functioning, based on the Global Assessment of Functioning (GAF), from admission to last transaction or admission to discharge.

## DEFINITIONS:

**Number of individuals active last day of time frame:** Individuals in outpatient treatment with no discharge transaction on last day

**Remove individuals in treatment < 6 months:** Individuals admitted with in the last six months are excluded from this measure

**Remove individuals with no service in last 90 days:** Individuals with no service in last ninety days are expected (in most cases) to be discharged.

Once they have been discharged from ICIS, their discharge record will be included in the measure, if they meet the discharge criteria.

**Remove individuals with missing data:** In rare cases, the data in ICIS may be missing or invalid.

**Number of individuals with only an admission CDC record:** Because the agency has not updated the individual's CDC and the individual has been in treatment for more than six months, these individuals will be counted under the 'No Change' category.

**Number with no CDC update in 1 year:** Because the agency has not updated the individual's CDC, the individual has been in treatment for more than six months and the last updated CDC is more than 1 year old, these individuals will be counted under the 'No Change' category.

**Number Evaluated:** The number of active outpatient individuals who will be measured.

**Excluded:** Number of individuals with missing or invalid data.

**Decrease:** GAF score is at least one point lower at last CDC/discharge than that at admission.

**No change:** No change in GAF score reported from admission to last CDC/discharge.

**Increase:** GAF score is at least one point higher at last CDC/discharge than that at admission.

**Admission:** Individual begins an outpatient treatment episode.

**Discharge:** Individual leaves outpatient treatment at that agency.

**Systemwide:** Represents the fifteen ODMHSAS-contracted and operated community mental health facilities.

**All Mental Health Contract Sources:** Includes the following contract sources: 01, 24, 25, 32, 39, 42, 43, 45, 47, 48, 50, 53, 55, 56, 57, 58, and 59).

**Age Group:** For active individuals, age is calculate at the end of the time period. For discharged individuals, age is calculated at discharge.

What is excluded from the analysis:

1. Non-outpatient services/individuals
2. Crisis Services
3. Persons discharged within three months of admission.
4. Persons with less than three non-crisis services.

**For the report meeting on September 5th, what additional information or discussion should be included? We have a whole page.**

The information provided in this report reflects the number of discharges during the time period, plus the number of active individuals at the end of the period. To be included in this report, at least one service must be reported after admission and the level of care for the individual must be outpatient. If an individual receives service under Contract Source 01 and another Mental Health Contract Source (see list below), they will be reported in each group.

**Notes:**

Data for this report are only updated by ODMHSAS staff at intervals. If the "Data Last Updated on:" is more than two weeks past, please contact Mark A. Reynolds at mreynolds@odmhsas.org or (405) 522-3824.

**Discharge Codes:**

Planned

- 60 - Completed Treatment
- 61 - Completed Court Treatment
- 40 - Level of Care Change

Unplanned

- 62 - Left ACA/90 Days
- 66 - Broke Rules
- 67 - AWOL
- 70 - Discharge Due to Treatment Incompatibility
- 92 - No service in 180 Days (auto-discharge)

Other

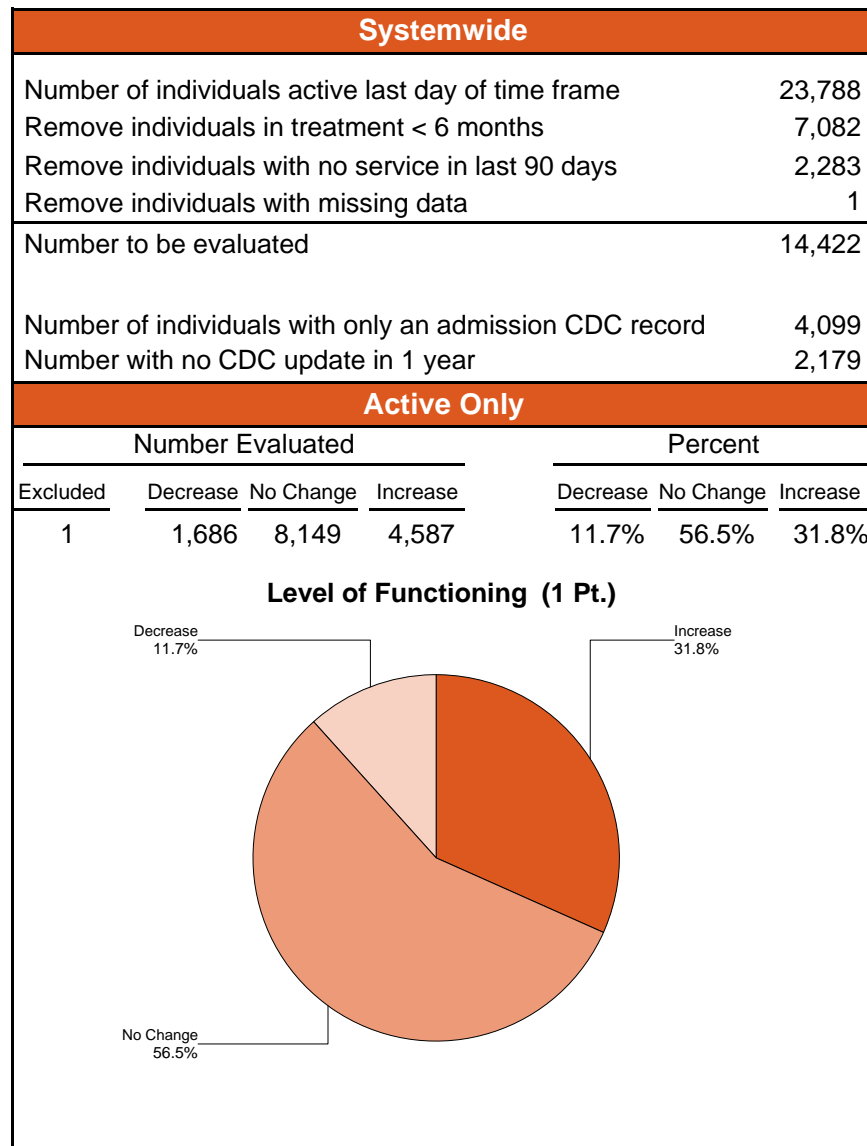
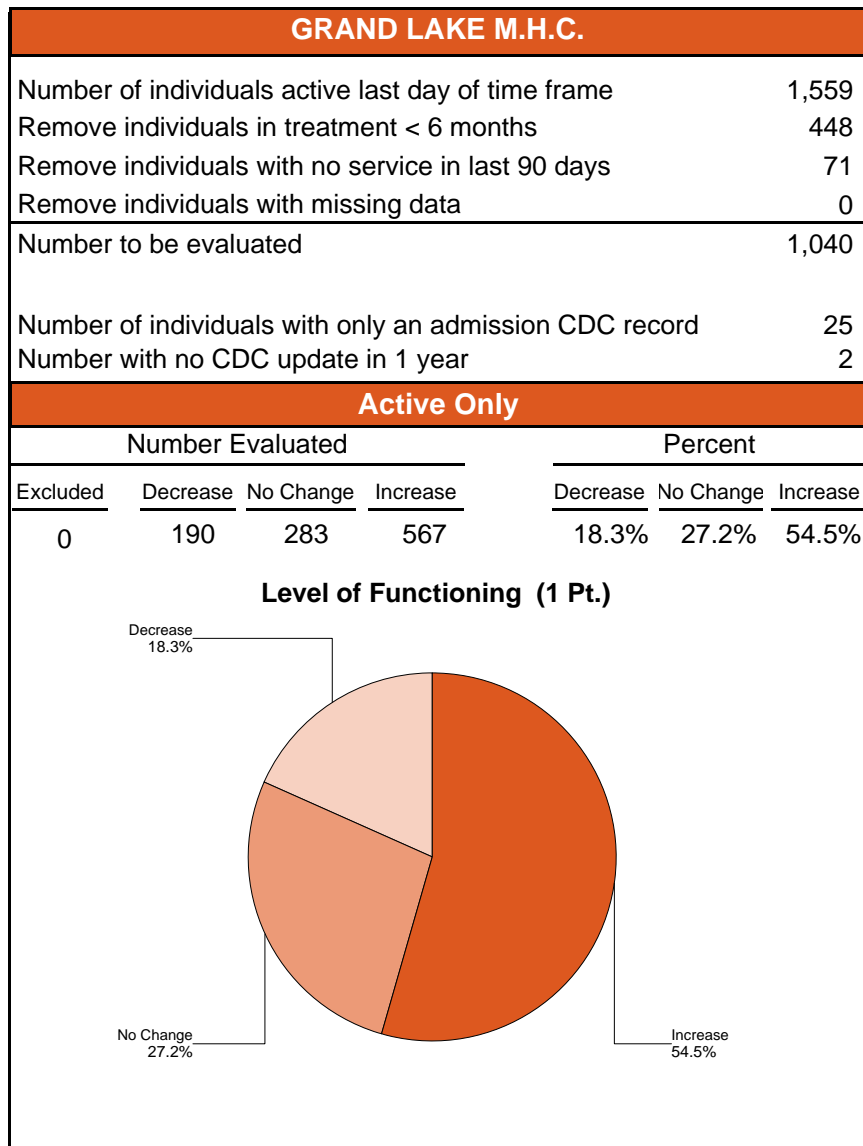
- 63 - Moved
- 64 - Transferred to another treatment facility
- 65 - Incarcerated
- 68 - Death
- 69 - Failed to begin Treatment

# Level of Functioning - Pie Chart

## (1 Point Change)

Increased Level of Functioning Change (1 Pt.) for Individuals Active in Outpatient Treatment on 12/31/2007 Or Discharged between 01/01/2007 and 12/31/2007

**Agency: (554) GRAND LAKE M.H.C.**  
**Contact Source: All Mental Health Contract Sources**  
**Age Group: Adults (18+)**



# Level of Functioning - Pie Chart

## (1 Point Change)

Increased Level of Functioning Change (1 Pt.) for Individuals Active in Outpatient Treatment on 12/31/2007 Or Discharged between 01/01/2007 and 12/31/2007

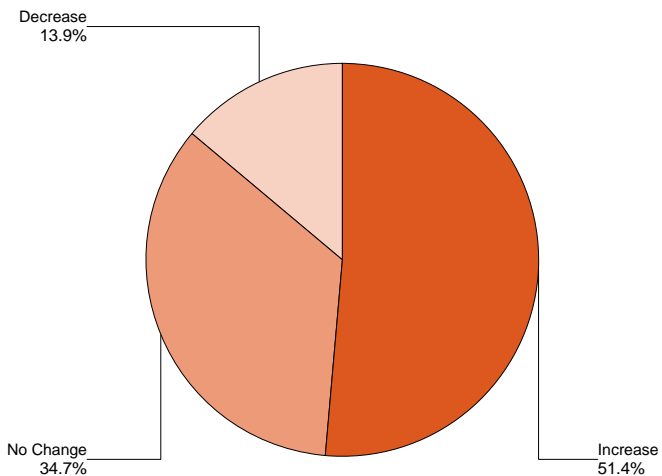
**Agency: (554) GRAND LAKE M.H.C.**

**Contact Source: All Mental Health Contract Sources**

**Age Group: Adults (18+)**

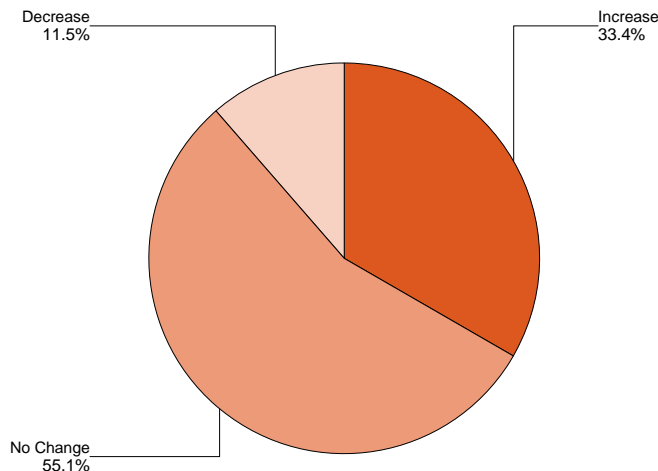
GRAND LAKE M.H.C.							
Active Plus Discharged Individuals	Count				Percent		
	Excluded	Decrease	No Change	Increase	Decrease	No Change	Increase
Active Clients	0	190	283	567	18.3%	27.2%	54.5%
Planned	0	0	1	9	0.0%	10.0%	90.0%
Unplanned	0	10	163	136	3.2%	52.8%	44.0%
Other	0	18	96	94	8.7%	46.2%	45.2%
<b>Total</b>	<b>0</b>	<b>218</b>	<b>543</b>	<b>806</b>	<b>13.9%</b>	<b>34.7%</b>	<b>51.4%</b>

**Level of Functioning (1 Pt.)**



Systemwide							
Active Plus Discharged Individuals	Count				Percent		
	Excluded	Decrease	No Change	Increase	Decrease	No Change	Increase
Active Clients	1	1,686	8,149	4,587	11.7%	56.5%	31.8%
Planned	0	65	152	386	10.8%	25.2%	64.0%
Unplanned	2	419	2,561	1,378	9.6%	58.8%	31.6%
Other	1	197	530	560	15.3%	41.2%	43.5%
<b>Total</b>	<b>4</b>	<b>2,367</b>	<b>11,392</b>	<b>6,911</b>	<b>11.5%</b>	<b>55.1%</b>	<b>33.4%</b>

**Level of Functioning (1 Pt.)**



# Level of Functioning - Pie Chart

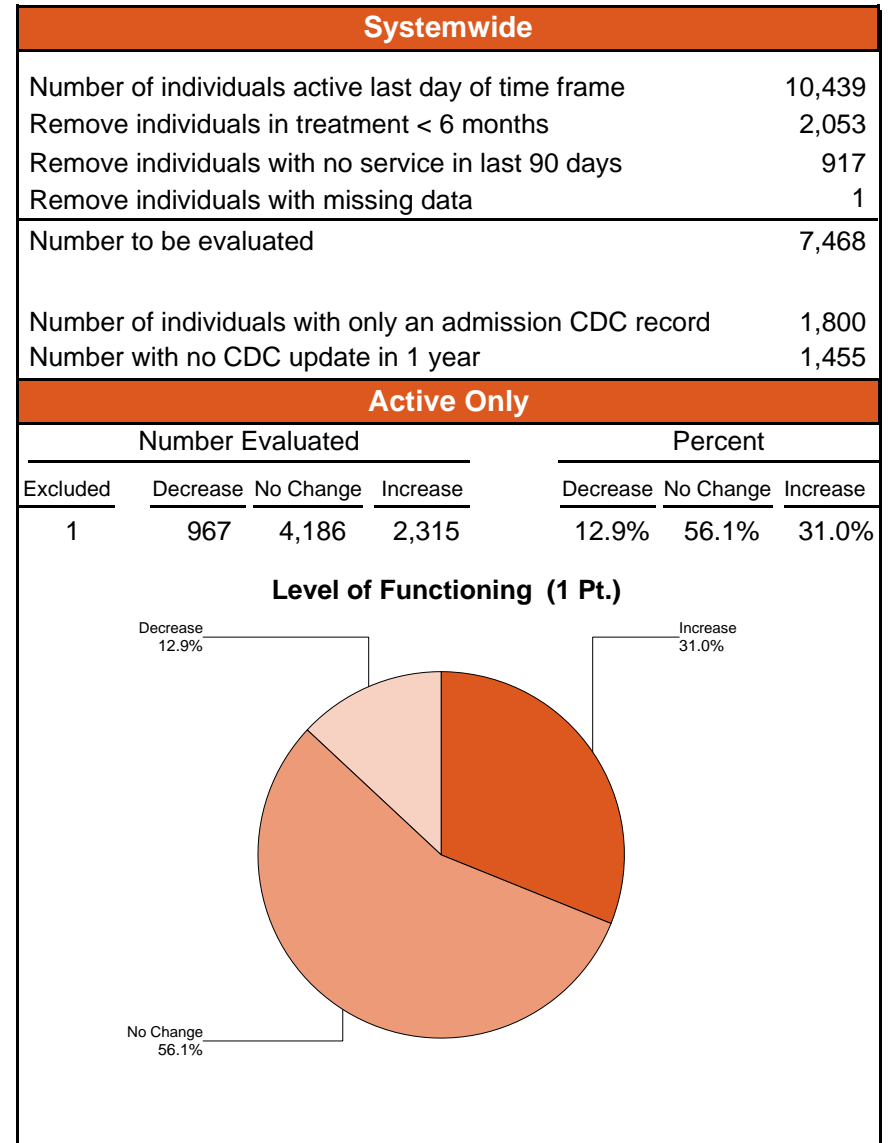
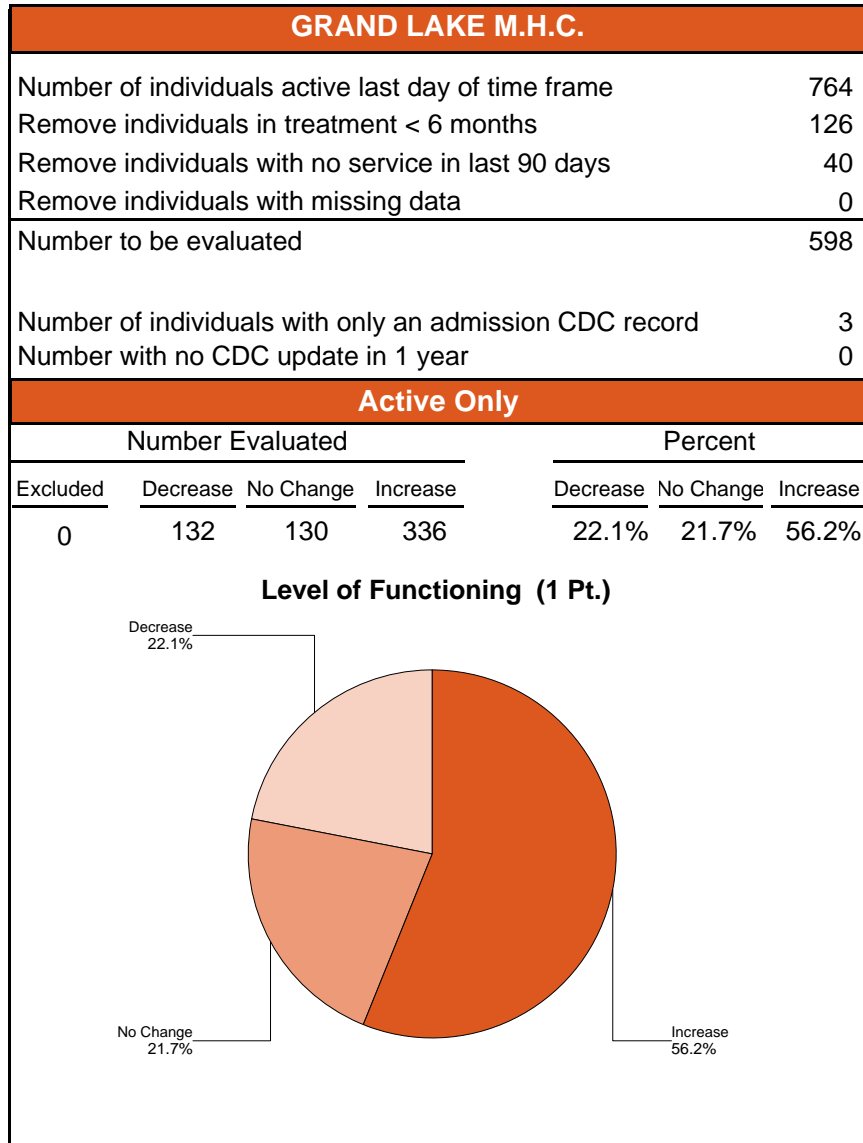
## (1 Point Change)

Increased Level of Functioning Change (1 Pt.) for Individuals Active in Outpatient Treatment on 12/31/2007 Or Discharged between 01/01/2007 and 12/31/2007

**Agency: (554) GRAND LAKE M.H.C.**

**Contact Source: All Mental Health Contract Source except 01**

**Age Group: Adults (18+)**



# Level of Functioning - Pie Chart

## (1 Point Change)

Increased Level of Functioning Change (1 Pt.) for Individuals Active in Outpatient Treatment on 12/31/2007 Or Discharged between 01/01/2007 and 12/31/2007

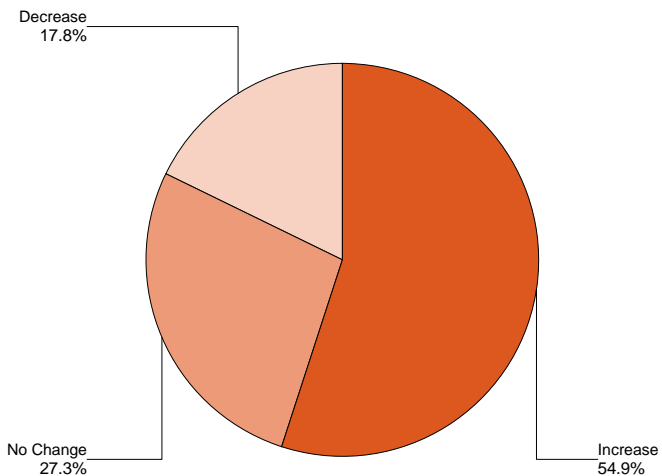
**Agency: (554) GRAND LAKE M.H.C.**

**Contact Source: All Mental Health Contract Source except 01**

**Age Group: Adults (18+)**

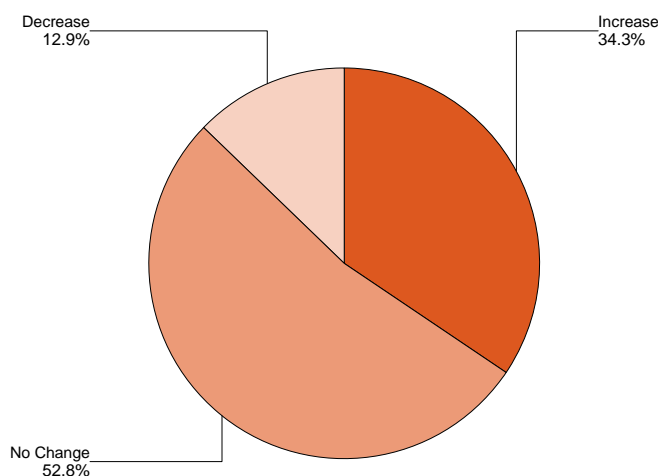
GRAND LAKE M.H.C.							
	Count				Percent		
	Excluded	Decrease	No Change	Increase	Decrease	No Change	Increase
Active Plus Discharged Individuals							
Active Clients	0	132	130	336	22.1%	21.7%	56.2%
Planned	0	0	1	7	0.0%	12.5%	87.5%
Unplanned	0	4	62	61	3.1%	48.8%	48.0%
Other	0	10	31	46	11.5%	35.6%	52.9%
<b>Total</b>	<b>0</b>	<b>146</b>	<b>224</b>	<b>450</b>	<b>17.8%</b>	<b>27.3%</b>	<b>54.9%</b>

**Level of Functioning (1 Pt.)**



Systemwide							
	Count				Percent		
	Excluded	Decrease	No Change	Increase	Decrease	No Change	Increase
Active Plus Discharged Individuals							
Active Clients	1	967	4,186	2,315	12.9%	56.1%	31.0%
Planned	0	41	63	215	12.9%	19.7%	67.4%
Unplanned	2	202	882	644	11.7%	51.0%	37.3%
Other	1	99	235	318	15.2%	36.0%	48.8%
<b>Total</b>	<b>4</b>	<b>1,309</b>	<b>5,366</b>	<b>3,492</b>	<b>12.9%</b>	<b>52.8%</b>	<b>34.3%</b>

**Level of Functioning (1 Pt.)**



# Level of Functioning - Pie Chart

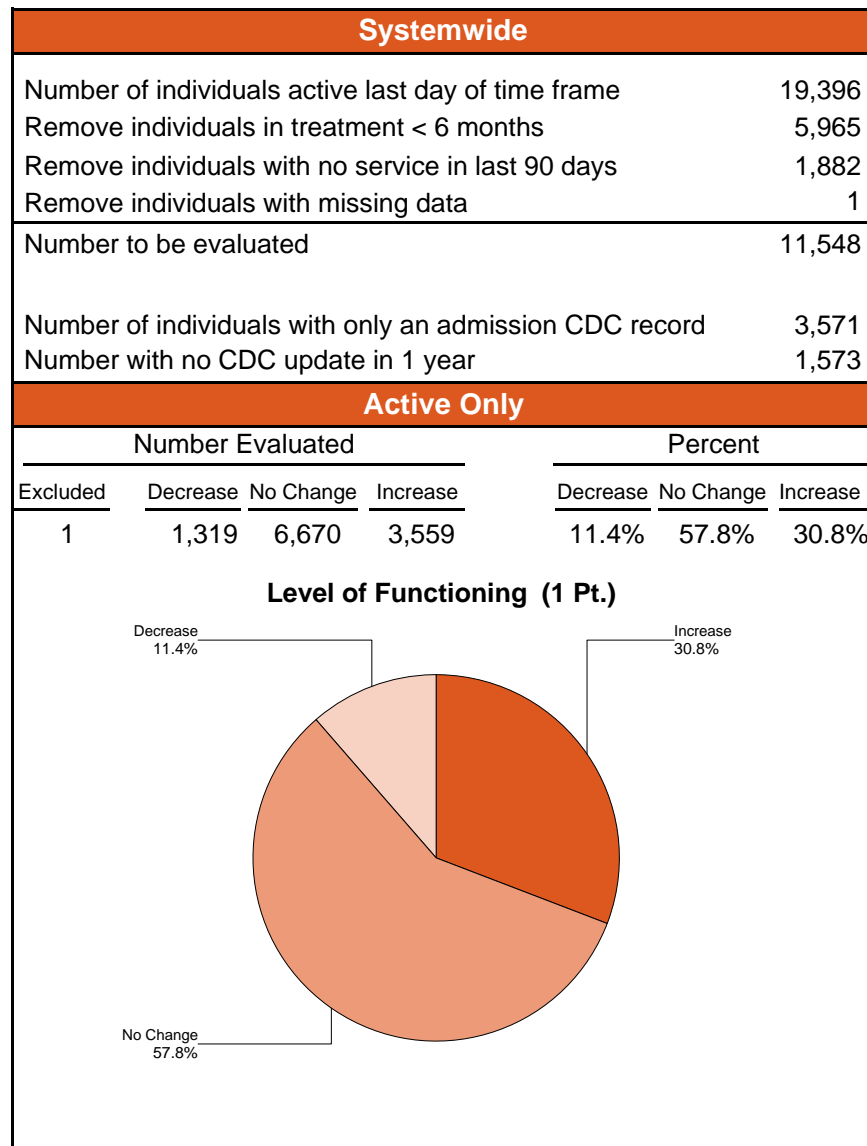
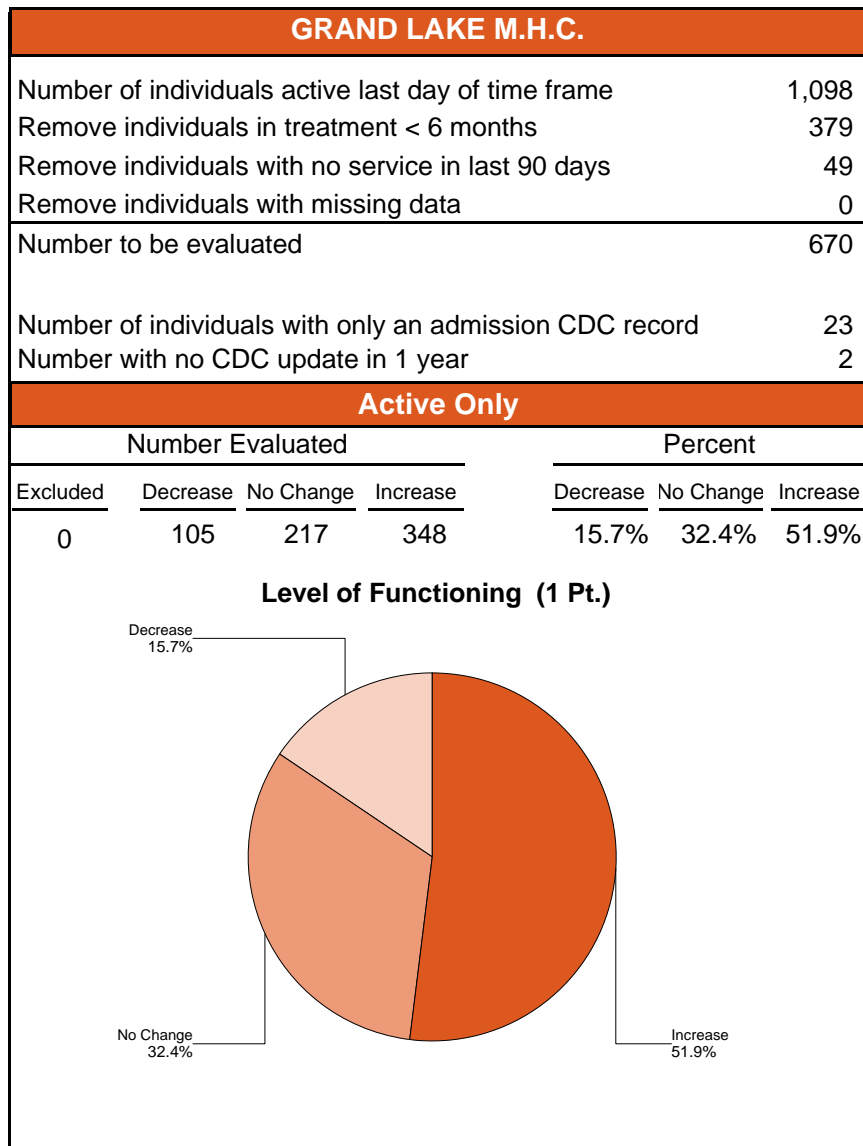
## (1 Point Change)

Increased Level of Functioning Change (1 Pt.) for Individuals Active in Outpatient Treatment on 12/31/2007 Or Discharged between 01/01/2007 and 12/31/2007

**Agency: (554) GRAND LAKE M.H.C.**

**Contact Source: (01) COMMUNITY MENTAL HEALTH**

**Age Group: Adults (18+)**



# Level of Functioning - Pie Chart

## (1 Point Change)

Increased Level of Functioning Change (1 Pt.) for Individuals Active in Outpatient Treatment on 12/31/2007 Or Discharged between 01/01/2007 and 12/31/2007

**Agency: (554) GRAND LAKE M.H.C.**

**Contact Source: (01) COMMUNITY MENTAL HEALTH**

**Age Group: Adults (18+)**

GRAND LAKE M.H.C.							
	Count				Percent		
	Excluded	Decrease	No Change	Increase	Decrease	No Change	Increase
Active Plus Discharged Individuals							
Active Clients	0	105	217	348	15.7%	32.4%	51.9%
Planned	0	0	0	4	0.0%	0.0%	100.0%
Unplanned	0	7	114	99	3.2%	51.8%	45.0%
Other	0	10	73	62	6.9%	50.3%	42.8%
<b>Total</b>	<b>0</b>	<b>122</b>	<b>404</b>	<b>513</b>	<b>11.7%</b>	<b>38.9%</b>	<b>49.4%</b>

Active Plus Discharged Individuals

Active Clients

Planned

Unplanned

Other

Total

Systemwide							
	Count				Percent		
	Excluded	Decrease	No Change	Increase	Decrease	No Change	Increase
	1	1,319	6,670	3,559	11.4%	57.8%	30.8%
	0	50	115	283	11.2%	25.7%	63.2%
	1	323	2,081	1,017	9.4%	60.8%	29.7%
	1	137	405	372	15.0%	44.3%	40.7%
<b>Total</b>	<b>3</b>	<b>1,829</b>	<b>9,271</b>	<b>5,231</b>	<b>11.2%</b>	<b>56.8%</b>	<b>32.0%</b>

Excluded

Decrease

No Change

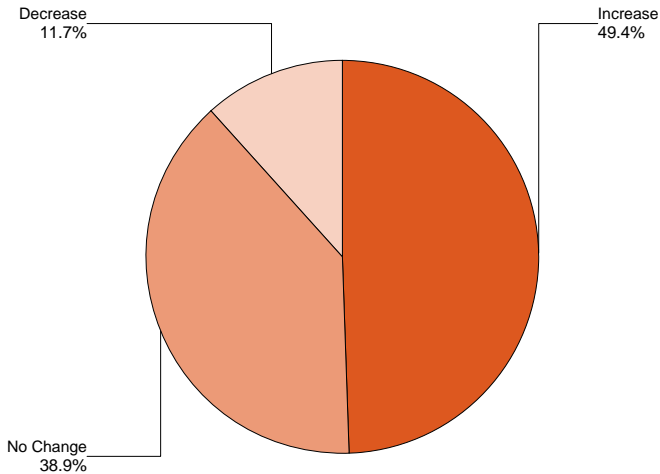
Increase

Decrease

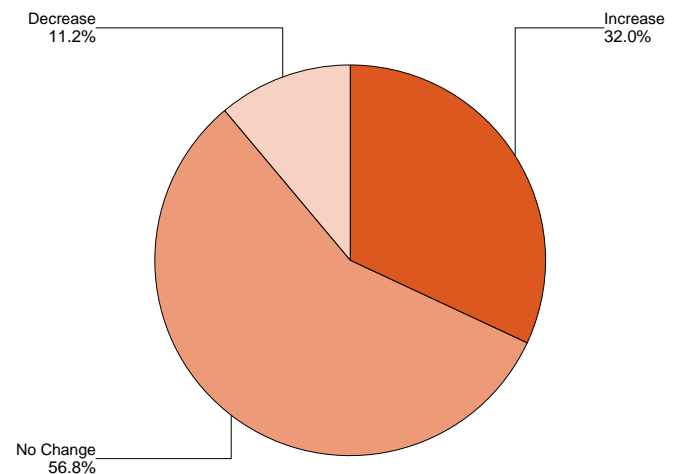
No Change

Increase

**Level of Functioning (1 Pt.)**



**Level of Functioning (1 Pt.)**

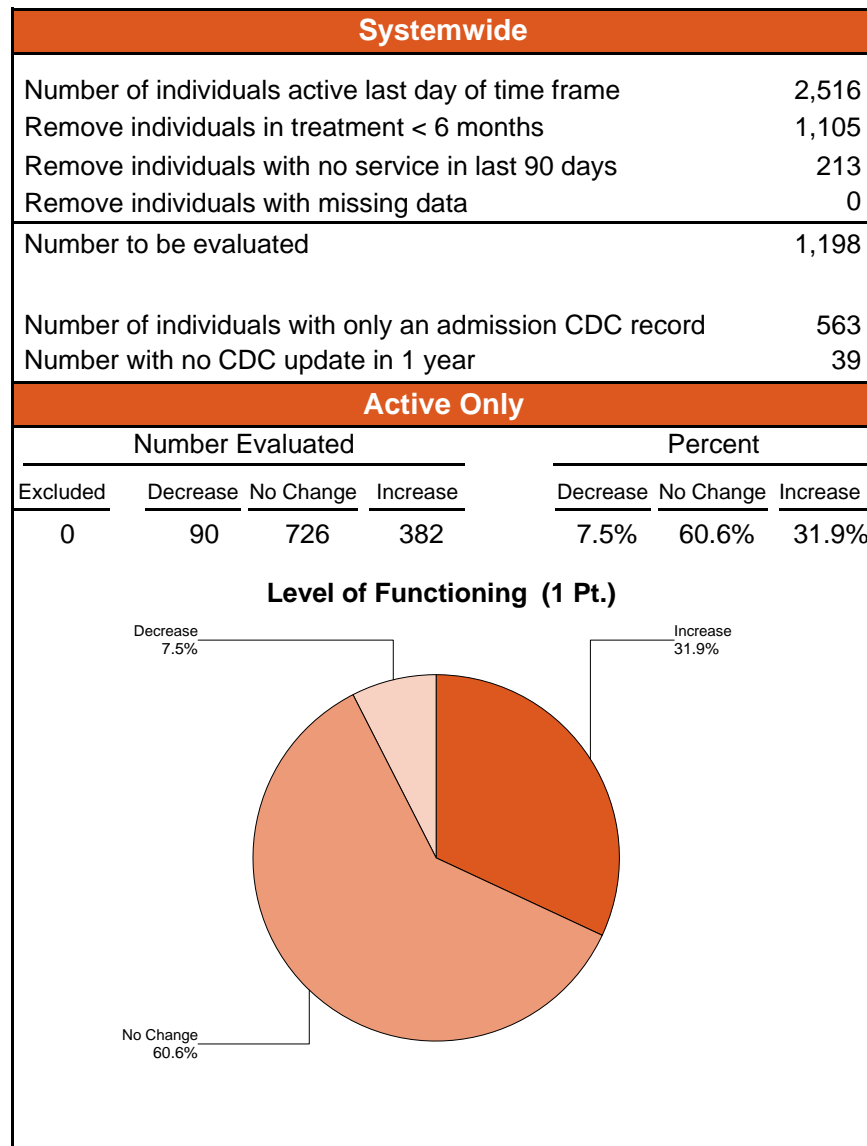
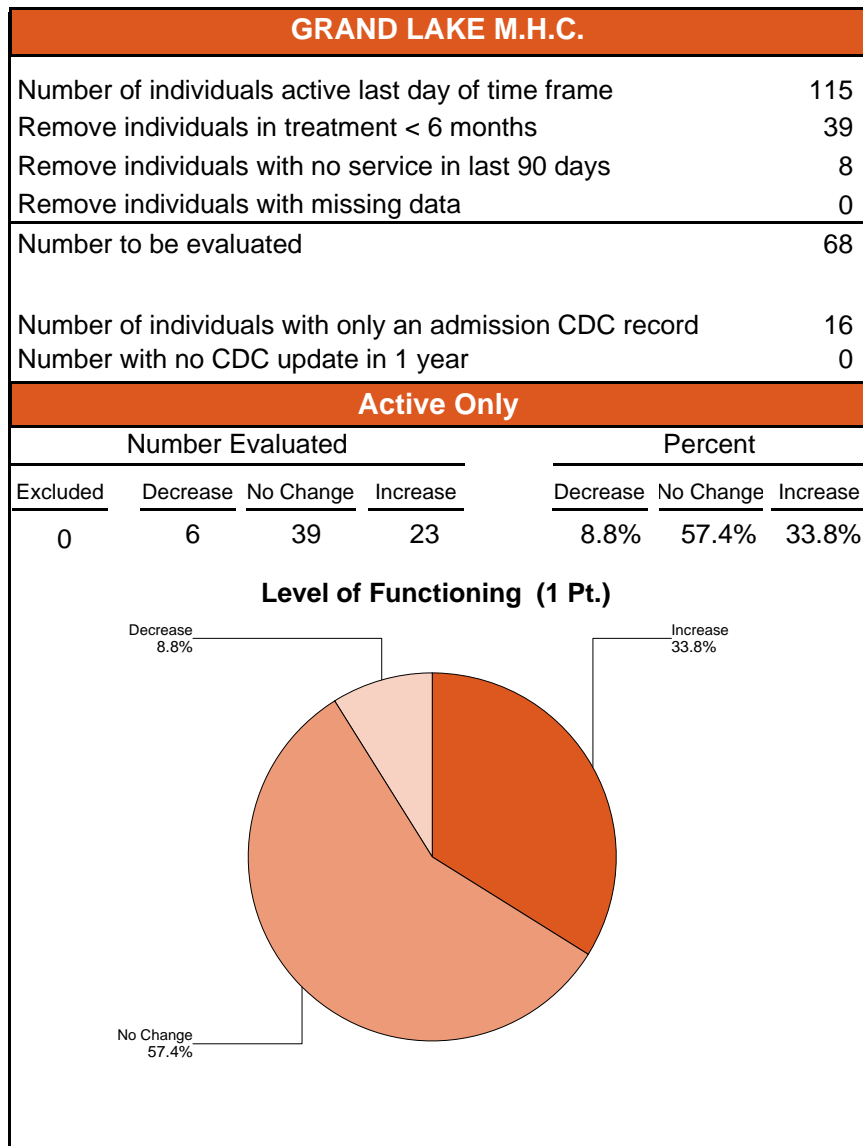


# Level of Functioning - Pie Chart

## (1 Point Change)

Increased Level of Functioning Change (1 Pt.) for Individuals Active in Outpatient Treatment on 12/31/2007 Or Discharged between 01/01/2007 and 12/31/2007

**Agency: (554) GRAND LAKE M.H.C.**  
**Contact Source: All Mental Health Contract Sources**  
**Age Group: Children (0-17)**



# Level of Functioning - Pie Chart

## (1 Point Change)

Increased Level of Functioning Change (1 Pt.) for Individuals Active in Outpatient Treatment on 12/31/2007 Or Discharged between 01/01/2007 and 12/31/2007

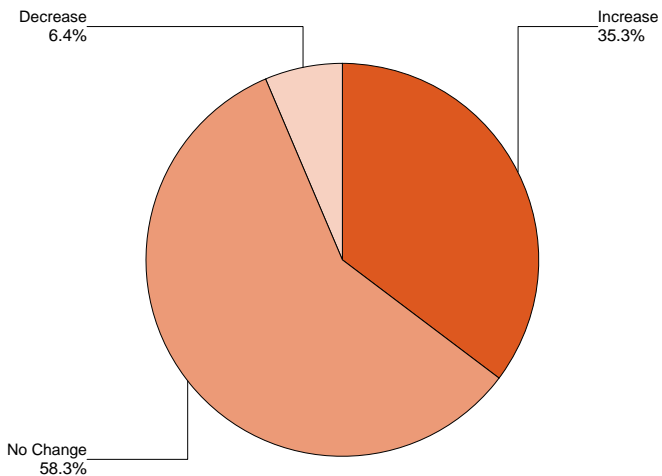
**Agency: (554) GRAND LAKE M.H.C.**

**Contact Source: All Mental Health Contract Sources**

**Age Group: Children (0-17)**

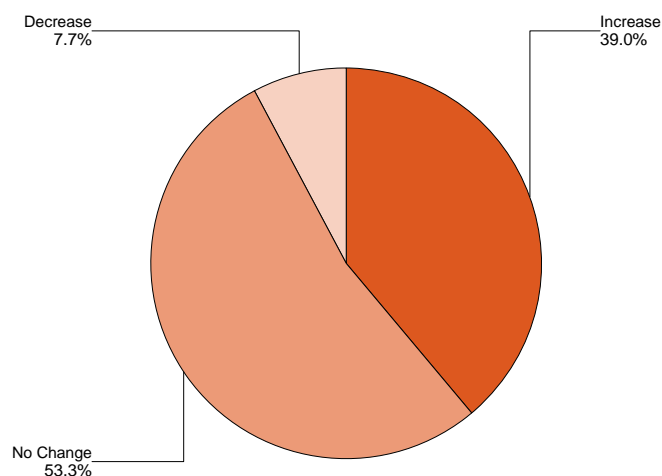
Active Plus Discharged Individuals	GRAND LAKE M.H.C.						
	Count				Percent		
	Excluded	Decrease	No Change	Increase	Decrease	No Change	Increase
Active Clients	0	6	39	23	8.8%	57.4%	33.8%
Planned	0	0	0	1	0.0%	0.0%	100.0%
Unplanned	0	0	19	10	0.0%	65.5%	34.5%
Other	0	4	33	21	6.9%	56.9%	36.2%
<b>Total</b>	<b>0</b>	<b>10</b>	<b>91</b>	<b>55</b>	<b>6.4%</b>	<b>58.3%</b>	<b>35.3%</b>

**Level of Functioning (1 Pt.)**



Active Plus Discharged Individuals	Systemwide						
	Count				Percent		
	Excluded	Decrease	No Change	Increase	Decrease	No Change	Increase
Active Clients	0	90	726	382	7.5%	60.6%	31.9%
Planned	1	18	70	243	5.4%	21.1%	73.4%
Unplanned	2	37	430	214	5.4%	63.1%	31.4%
Other	0	50	121	145	15.8%	38.3%	45.9%
<b>Total</b>	<b>3</b>	<b>195</b>	<b>1,347</b>	<b>984</b>	<b>7.7%</b>	<b>53.3%</b>	<b>39.0%</b>

**Level of Functioning (1 Pt.)**



# Level of Functioning - Pie Chart

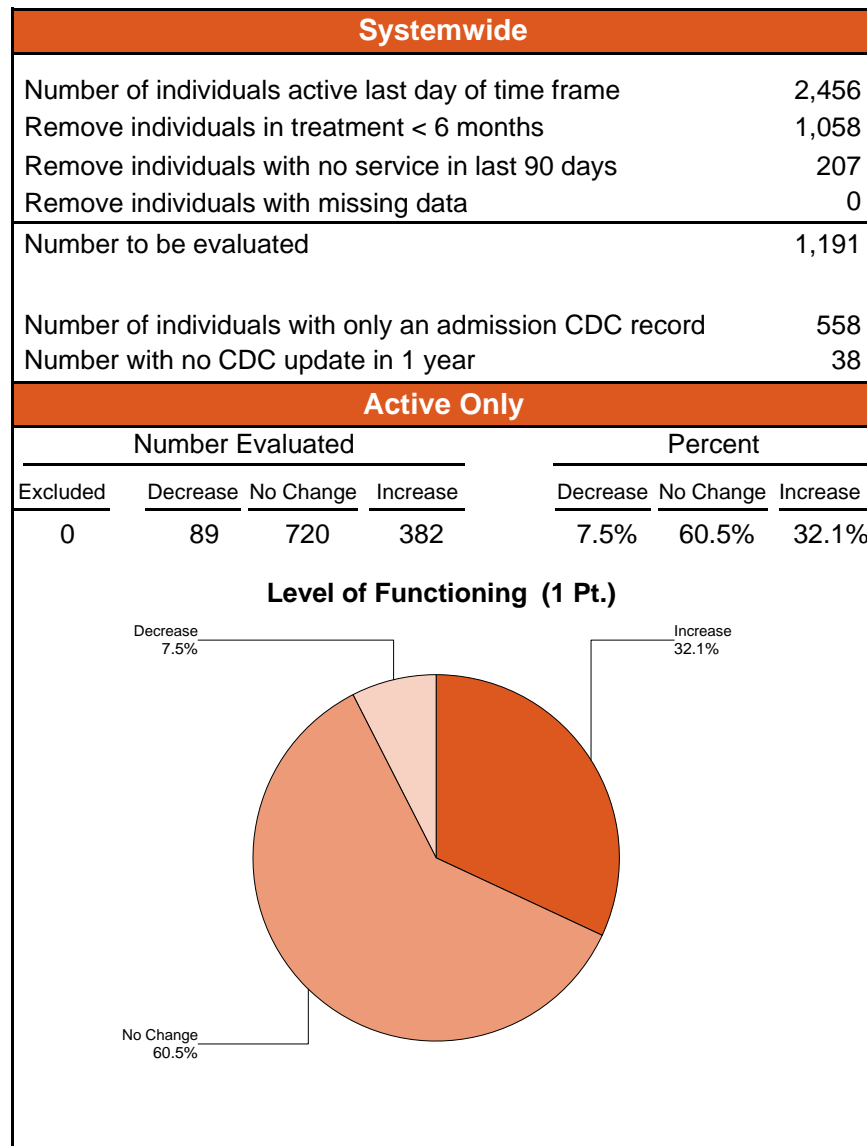
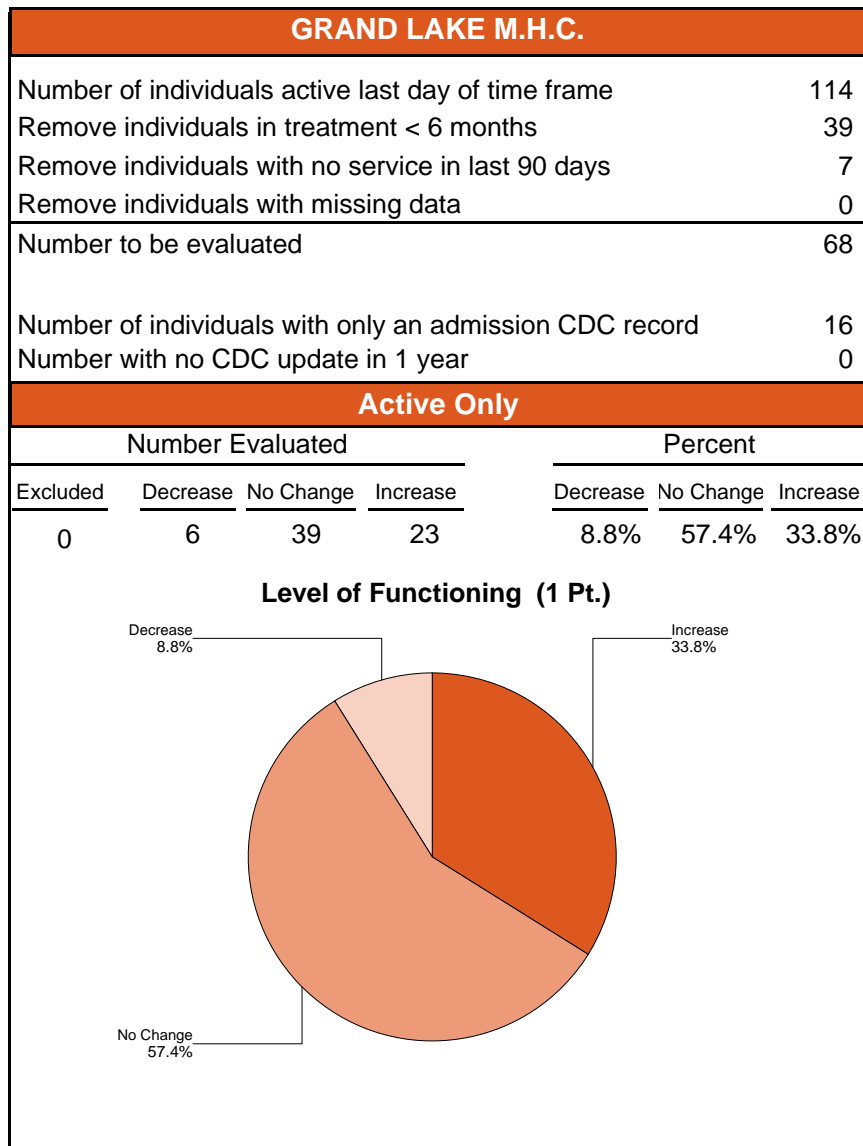
## (1 Point Change)

Increased Level of Functioning Change (1 Pt.) for Individuals Active in Outpatient Treatment on 12/31/2007 Or Discharged between 01/01/2007 and 12/31/2007

**Agency: (554) GRAND LAKE M.H.C.**

**Contact Source: All Mental Health Contract Source except 01**

**Age Group: Children (0-17)**



# Level of Functioning - Pie Chart

## (1 Point Change)

Increased Level of Functioning Change (1 Pt.) for Individuals Active in Outpatient Treatment on 12/31/2007 Or Discharged between 01/01/2007 and 12/31/2007

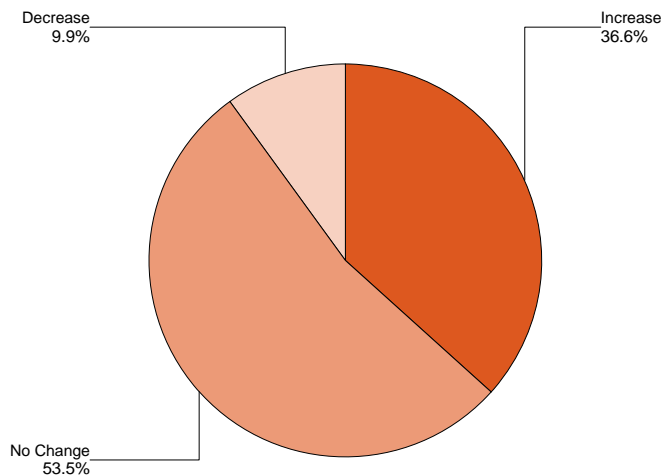
**Agency: (554) GRAND LAKE M.H.C.**

**Contact Source: All Mental Health Contract Source except 01**

**Age Group: Children (0-17)**

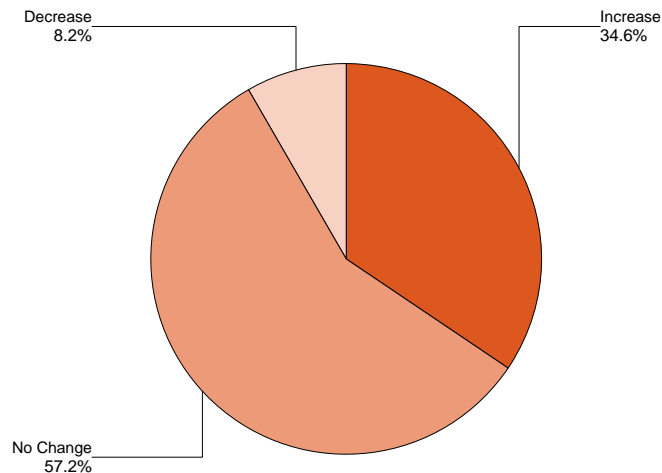
GRAND LAKE M.H.C.							
	Count				Percent		
	Excluded	Decrease	No Change	Increase	Decrease	No Change	Increase
Active Plus Discharged Individuals							
Active Clients	0	6	39	23	8.8%	57.4%	33.8%
Unplanned	0	0	1	2	0.0%	33.3%	66.7%
Other	0	4	14	12	13.3%	46.7%	40.0%
<b>Total</b>	<b>0</b>	<b>10</b>	<b>54</b>	<b>37</b>	<b>9.9%</b>	<b>53.5%</b>	<b>36.6%</b>

**Level of Functioning (1 Pt.)**



Systemwide							
	Count				Percent		
	Excluded	Decrease	No Change	Increase	Decrease	No Change	Increase
Active Plus Discharged Individuals							
Active Clients	0	89	720	382	7.5%	60.5%	32.1%
Unplanned	2	25	259	147	5.8%	60.1%	34.1%
Other	0	39	82	112	16.7%	35.2%	48.1%
<b>Total</b>	<b>2</b>	<b>153</b>	<b>1,061</b>	<b>641</b>	<b>8.2%</b>	<b>57.2%</b>	<b>34.6%</b>

**Level of Functioning (1 Pt.)**



# Level of Functioning - Pie Chart

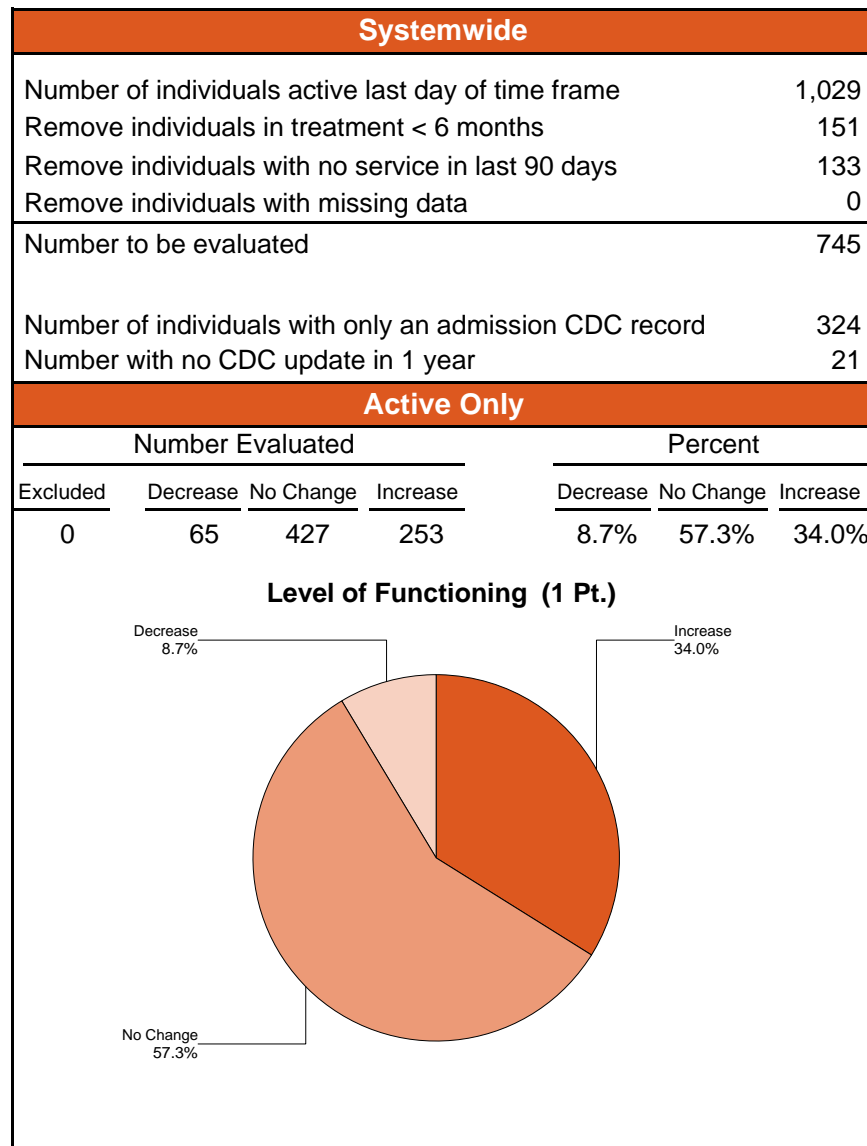
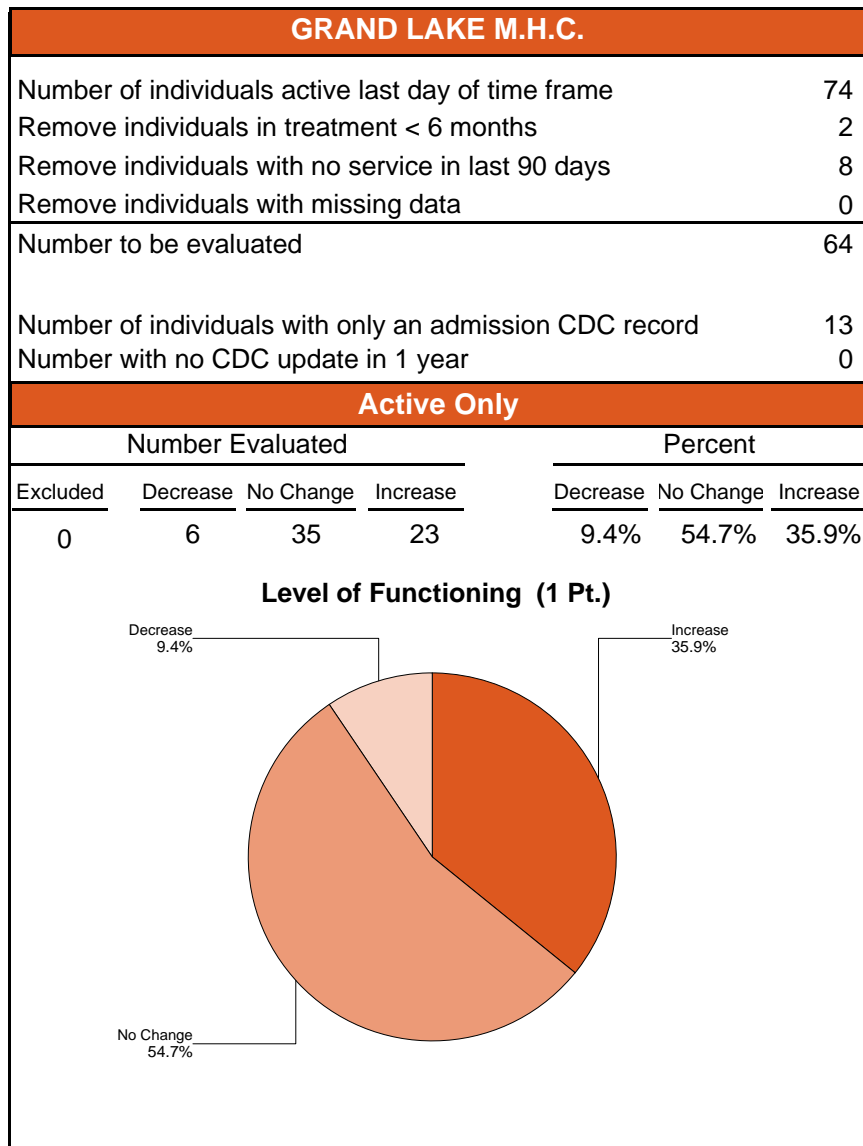
## (1 Point Change)

Increased Level of Functioning Change (1 Pt.) for Individuals Active in Outpatient Treatment on 12/31/2007 Or Discharged between 01/01/2007 and 12/31/2007

**Agency: (554) GRAND LAKE M.H.C.**

**Contact Source: (01) COMMUNITY MENTAL HEALTH**

**Age Group: Children (0-17)**



# Level of Functioning - Pie Chart

## (1 Point Change)

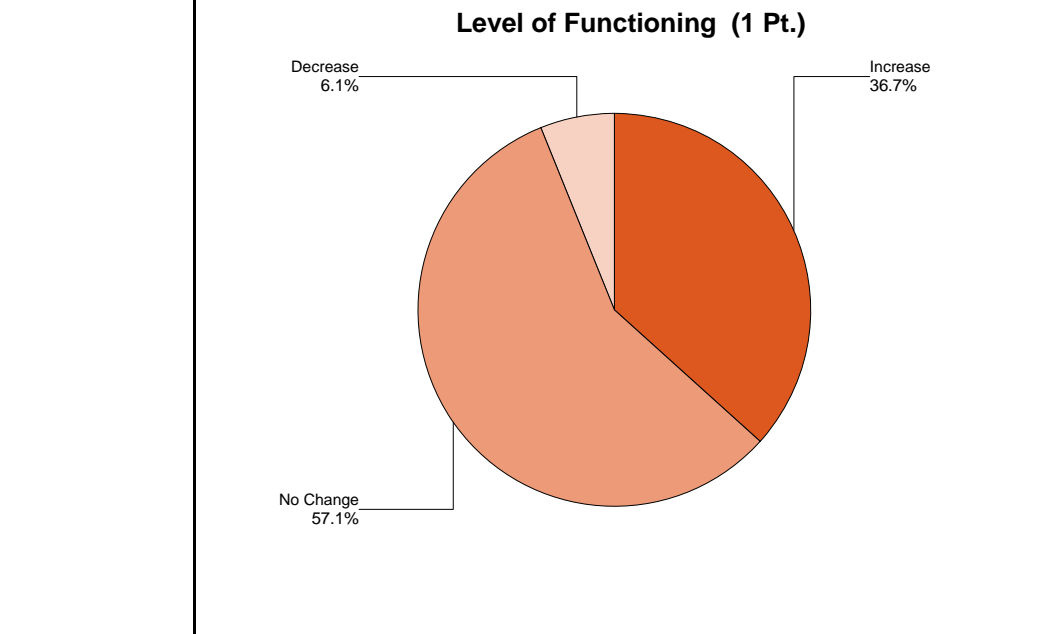
Increased Level of Functioning Change (1 Pt.) for Individuals Active in Outpatient Treatment on 12/31/2007 Or Discharged between 01/01/2007 and 12/31/2007

**Agency: (554) GRAND LAKE M.H.C.**

**Contact Source: (01) COMMUNITY MENTAL HEALTH**

**Age Group: Children (0-17)**

GRAND LAKE M.H.C.							
	Count				Percent		
	Excluded	Decrease	No Change	Increase	Decrease	No Change	Increase
Active Plus Discharged Individuals							
Active Clients	0	6	35	23	9.4%	54.7%	35.9%
Planned	0	0	0	1	0.0%	0.0%	100.0%
Unplanned	0	0	19	10	0.0%	65.5%	34.5%
Other	0	3	30	20	5.7%	56.6%	37.7%
<b>Total</b>	<b>0</b>	<b>9</b>	<b>84</b>	<b>54</b>	<b>6.1%</b>	<b>57.1%</b>	<b>36.7%</b>



Systemwide							
	Count				Percent		
	Excluded	Decrease	No Change	Increase	Decrease	No Change	Increase
Active Plus Discharged Individuals							
Active Clients	0	65	427	253	8.7%	57.3%	34.0%
Planned	1	14	47	168	6.1%	20.5%	73.4%
Unplanned	0	24	275	142	5.4%	62.4%	32.2%
Other	0	32	84	93	15.3%	40.2%	44.5%
<b>Total</b>	<b>1</b>	<b>135</b>	<b>833</b>	<b>656</b>	<b>8.3%</b>	<b>51.3%</b>	<b>40.4%</b>

