

Outpatient Engagement-Trend Line

Outpatient Engagement for Individuals Discharged/Level of Care Change for the last Twelve Quarters
at (640) 12 & 12, INC.

Report Date : 2/5/2008

Data Last Updated on: 02/03/2008

Report Description:

Washington Circle Measures - <http://www.washingtoncircle.org>

Measure: Outpatient Engagement

The information provided in this report reflects the number of discharges/level of care changes, rather than the number of individuals. For example, if a person is discharged five times during the selected time period, the number of discharges would be five. To be included in this report, at least one service must be reported after admission. Also, when an episode includes more than one service reported under multiple contract sources, the episode will be counted under each contract source, but will only be counted once under the 'All Contract Sources' or 'All Substance Abuse Contract Sources (PPMR)' report.

DEFINITIONS:

Engaged: Individual received two additional non-crisis services within 30 days of initiation. Please see Outpatient Initiation Report for definition of initiation.

Not Engaged: Individual did not receive two additional non-crisis services within 30 days of initiation.

Discharge: Individual leaves treatment at that agency.

Level of Care Change: Individual is moving from either detox, residential treatment, halfway house or outpatient to another level of care within an agency.

Systemwide: Represents all ODMHSAS-contracted and operated facilities which have that level of care and contract source.

All Substance Abuse Contract Sources (PPMR): Includes the following contract source codes: 02, 03, 17, 20, 21, 22, 23, 27, 29, 41, 44, 49, 54, 61 and 70. These contract sources are included in the Substance Abuse Provider Performance Management Report.

All Contract Sources: All contract sources which this agency reports.

Notes:

Data for this report are only updated by ODMHSAS staff at intervals. If the "Data Last Updated on:" is more than two weeks past, please contact Mark A. Reynolds at mreynolds@odmhsas.org or (405) 522-3824.

Discharge Codes:	<u>Planned</u>	60 - Completed Treatment	<u>Unplanned</u>	62 - Left ACA/90 Days	<u>Other</u>	63 - Moved
		61 - Completed Court Treatment		66 - Broke Rules		64 - Transferred to another treatment facility
		40 - Level of Care Change		67 - AWOL		65 - Incarcerated
				70 - Discharge Due to Treatment Incompatibility		68 - Death
				92 - No service in 180 Days (auto-discharge)		69 - Failed to begin Treatment

Outpatient Engagement-Trend Line

Outpatient Engagement for Individuals Discharged/Level of Care Change for the last Twelve Quarters

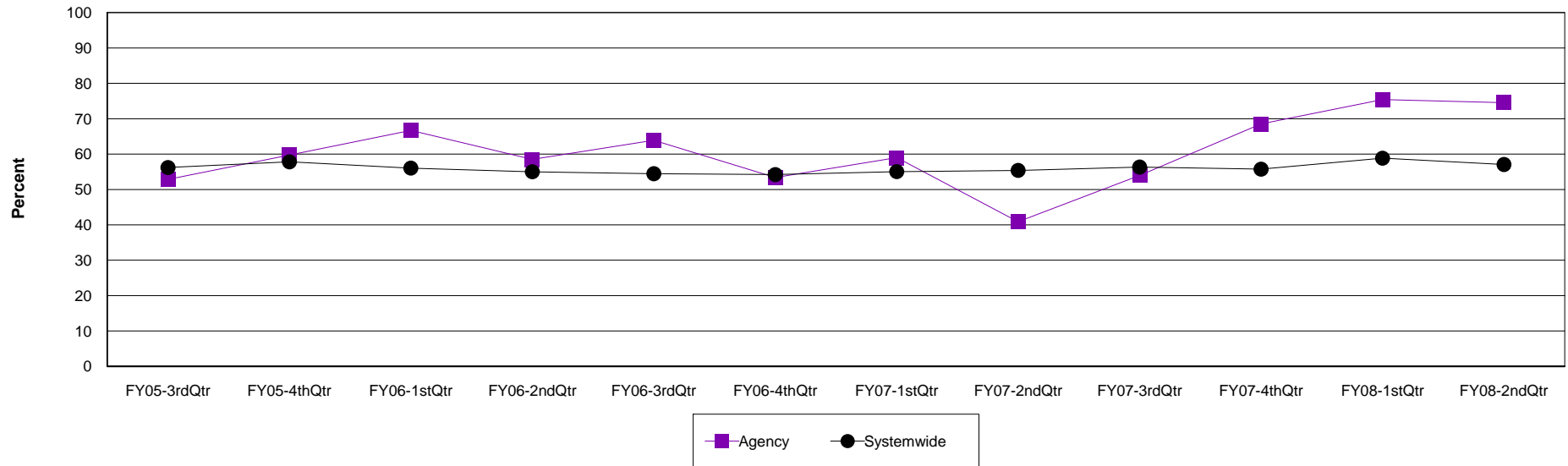
Agency: (640) 12 & 12, INC.

Level of Care: Outpatient

Contract Source: All Substance Abuse Contract Sources (PPMR)

Age Group: Adults (18+)

Outpatient Engagement at 12 & 12, INC.



Agency	FY05-3rdQtr	FY05-4thQtr	FY06-1stQtr	FY06-2ndQtr	FY06-3rdQtr	FY06-4thQtr	FY07-1stQtr	FY07-2ndQtr	FY07-3rdQtr	FY07-4thQtr	FY08-1stQtr	FY08-2ndQtr
Not Engaged	37	46	78	31	46	47	69	36	34	50	46	41
Discharges	70	77	117	53	72	88	117	88	63	73	61	55
Percent	52.9%	59.7%	66.7%	58.5%	63.9%	53.4%	59.0%	40.9%	54.0%	68.5%	75.4%	74.5%

Systemwide	FY05-3rdQtr	FY05-4thQtr	FY06-1stQtr	FY06-2ndQtr	FY06-3rdQtr	FY06-4thQtr	FY07-1stQtr	FY07-2ndQtr	FY07-3rdQtr	FY07-4thQtr	FY08-1stQtr	FY08-2ndQtr
Not Engaged	1,307	1,396	1,305	1,280	1,049	1,107	1,201	1,152	1,307	1,336	1,254	914
Discharges	2,326	2,415	2,329	2,327	1,926	2,042	2,182	2,080	2,321	2,397	2,131	1,602
Percent	56.2%	57.8%	56.0%	55.0%	54.5%	54.2%	55.0%	55.4%	56.3%	55.7%	58.8%	57.1%

Outpatient Engagement-Trend Line

Outpatient Engagement for Individuals Discharged/Level of Care Change for the last Twelve Quarters

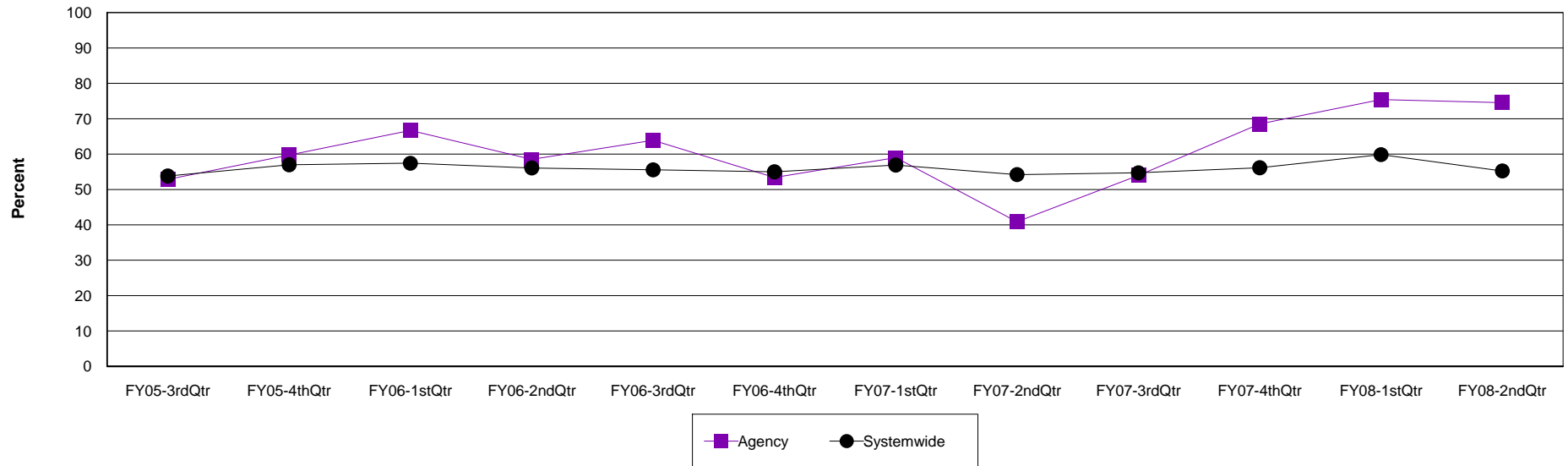
Agency: (640) 12 & 12, INC.

Level of Care: Outpatient

Contract Source: All Contract Sources

Age Group: Adults (18+)

Outpatient Engagement at 12 & 12, INC.



Agency	FY05-3rdQtr	FY05-4thQtr	FY06-1stQtr	FY06-2ndQtr	FY06-3rdQtr	FY06-4thQtr	FY07-1stQtr	FY07-2ndQtr	FY07-3rdQtr	FY07-4thQtr	FY08-1stQtr	FY08-2ndQtr
Not Engaged	37	46	78	31	46	47	69	36	34	50	46	41
Discharges	70	77	117	53	72	88	117	88	63	73	61	55
Percent	52.9%	59.7%	66.7%	58.5%	63.9%	53.4%	59.0%	40.9%	54.0%	68.5%	75.4%	74.5%

Systemwide	FY05-3rdQtr	FY05-4thQtr	FY06-1stQtr	FY06-2ndQtr	FY06-3rdQtr	FY06-4thQtr	FY07-1stQtr	FY07-2ndQtr	FY07-3rdQtr	FY07-4thQtr	FY08-1stQtr	FY08-2ndQtr
Not Engaged	878	959	976	961	836	809	946	857	971	1,008	957	675
Discharges	1,632	1,683	1,700	1,714	1,505	1,471	1,663	1,581	1,775	1,796	1,599	1,222
Percent	53.8%	57.0%	57.4%	56.1%	55.5%	55.0%	56.9%	54.2%	54.7%	56.1%	59.8%	55.2%

Outpatient Engagement-Trend Line

Outpatient Engagement for Individuals Discharged/Level of Care Change for the last Twelve Quarters

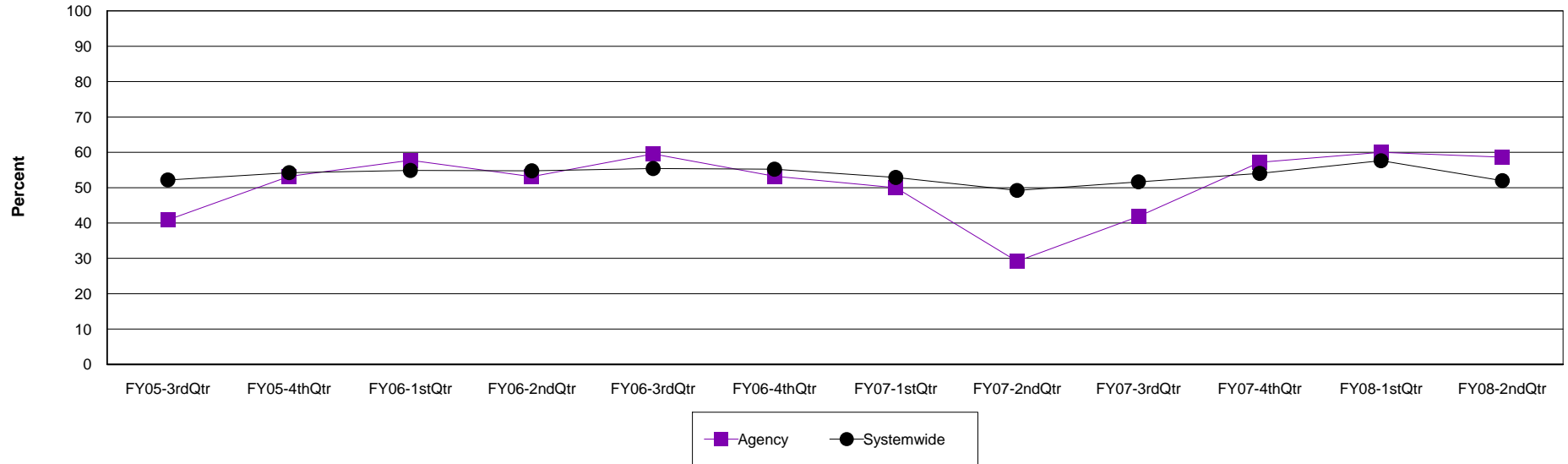
Agency: (640) 12 & 12, INC.

Level of Care: Outpatient

Contract Source: (02) ALCOHOL/DRUG

Age Group: Adults (18+)

Outpatient Engagement at 12 & 12, INC.



Agency	FY05-3rdQtr	FY05-4thQtr	FY06-1stQtr	FY06-2ndQtr	FY06-3rdQtr	FY06-4thQtr	FY07-1stQtr	FY07-2ndQtr	FY07-3rdQtr	FY07-4thQtr	FY08-1stQtr	FY08-2ndQtr
Not Engaged	18	25	41	17	28	33	33	14	18	24	18	17
Discharges	44	47	71	32	47	62	66	48	43	42	30	29
Percent	40.9%	53.2%	57.7%	53.1%	59.6%	53.2%	50.0%	29.2%	41.9%	57.1%	60.0%	58.6%

Systemwide	FY05-3rdQtr	FY05-4thQtr	FY06-1stQtr	FY06-2ndQtr	FY06-3rdQtr	FY06-4thQtr	FY07-1stQtr	FY07-2ndQtr	FY07-3rdQtr	FY07-4thQtr	FY08-1stQtr	FY08-2ndQtr
Not Engaged	597	678	691	677	568	529	537	438	517	522	480	355
Discharges	1,144	1,250	1,259	1,236	1,025	958	1,015	890	1,001	966	833	683
Percent	52.2%	54.2%	54.9%	54.8%	55.4%	55.2%	52.9%	49.2%	51.6%	54.0%	57.6%	52.0%

Outpatient Engagement-Trend Line

Outpatient Engagement for Individuals Discharged/Level of Care Change for the last Twelve Quarters

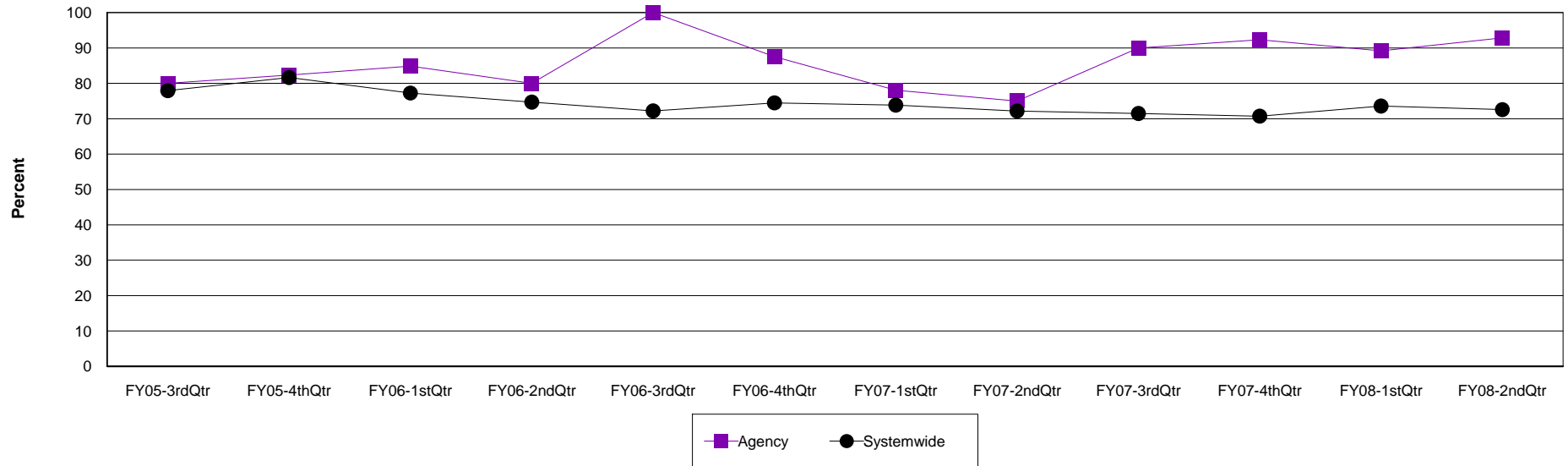
Agency: (640) 12 & 12, INC.

Level of Care: Outpatient

Contract Source: (20) DRUG COURT

Age Group: Adults (18+)

Outpatient Engagement at 12 & 12, INC.



Agency	FY05-3rdQtr	FY05-4thQtr	FY06-1stQtr	FY06-2ndQtr	FY06-3rdQtr	FY06-4thQtr	FY07-1stQtr	FY07-2ndQtr	FY07-3rdQtr	FY07-4thQtr	FY08-1stQtr	FY08-2ndQtr
Not Engaged	16	14	28	16	19	14	32	21	18	24	33	26
Discharges	20	17	33	20	19	16	41	28	20	26	37	28
Percent	80.0%	82.4%	84.8%	80.0%	100.0%	87.5%	78.0%	75.0%	90.0%	92.3%	89.2%	92.9%

Systemwide	FY05-3rdQtr	FY05-4thQtr	FY06-1stQtr	FY06-2ndQtr	FY06-3rdQtr	FY06-4thQtr	FY07-1stQtr	FY07-2ndQtr	FY07-3rdQtr	FY07-4thQtr	FY08-1stQtr	FY08-2ndQtr
Not Engaged	201	209	275	292	265	280	384	350	446	442	465	291
Discharges	258	256	356	391	367	376	520	485	624	625	632	401
Percent	77.9%	81.6%	77.2%	74.7%	72.2%	74.5%	73.8%	72.2%	71.5%	70.7%	73.6%	72.6%

Outpatient Engagement-Trend Line

Outpatient Engagement for Individuals Discharged/Level of Care Change for the last Twelve Quarters

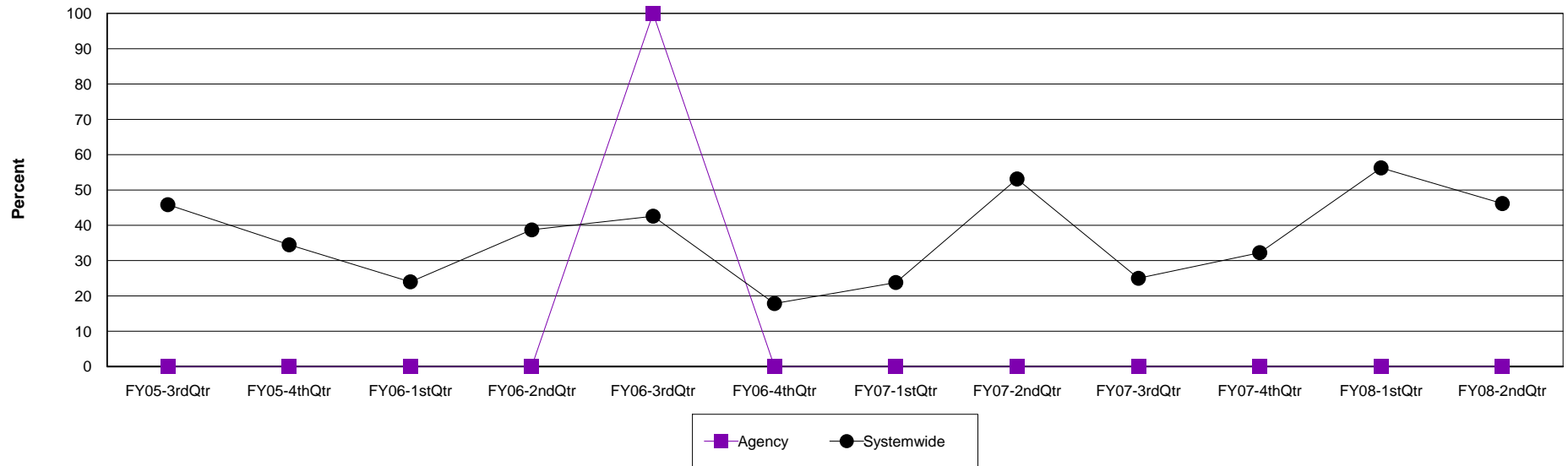
Agency: (640) 12 & 12, INC.

Level of Care: Outpatient

Contract Source: (21) ALCOHOL/DRUG SPECIALIZED PROGRAMS

Age Group: Adults (18+)

Outpatient Engagement at 12 & 12, INC.



Agency	FY05-3rdQtr	FY05-4thQtr	FY06-1stQtr	FY06-2ndQtr	FY06-3rdQtr	FY06-4thQtr	FY07-1stQtr	FY07-2ndQtr	FY07-3rdQtr	FY07-4thQtr	FY08-1stQtr	FY08-2ndQtr
Not Engaged	0	0	0	0	1	0	0	0	0	0	0	0
Discharges	0	0	1	0	1	0	0	0	0	1	0	1
Percent	0.0%	0.0%	0.0%	0.0%	100.0%	0.0%	0.0%	0.0%	0.0%	0.0%	0.0%	0.0%

Systemwide	FY05-3rdQtr	FY05-4thQtr	FY06-1stQtr	FY06-2ndQtr	FY06-3rdQtr	FY06-4thQtr	FY07-1stQtr	FY07-2ndQtr	FY07-3rdQtr	FY07-4thQtr	FY08-1stQtr	FY08-2ndQtr
Not Engaged	11	10	6	12	23	5	5	34	8	10	9	6
Discharges	24	29	25	31	54	28	21	64	32	31	16	13
Percent	45.8%	34.5%	24.0%	38.7%	42.6%	17.9%	23.8%	53.1%	25.0%	32.3%	56.3%	46.2%

Outpatient Engagement-Trend Line

Outpatient Engagement for Individuals Discharged/Level of Care Change for the last Twelve Quarters

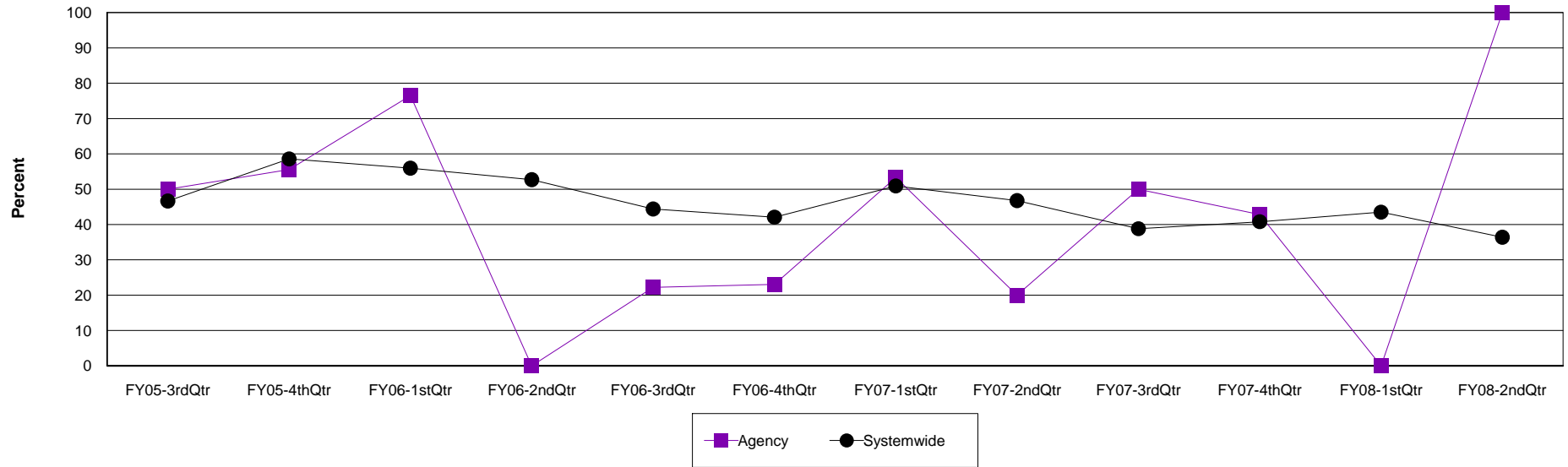
Agency: (640) 12 & 12, INC.

Level of Care: Outpatient

Contract Source: (29) PROBATION AND PAROLE

Age Group: Adults (18+)

Outpatient Engagement at 12 & 12, INC.



Agency	FY05-3rdQtr	FY05-4thQtr	FY06-1stQtr	FY06-2ndQtr	FY06-3rdQtr	FY06-4thQtr	FY07-1stQtr	FY07-2ndQtr	FY07-3rdQtr	FY07-4thQtr	FY08-1stQtr	FY08-2ndQtr
Not Engaged	5	10	13	0	2	3	8	3	2	3	0	3
Discharges	10	18	17	3	9	13	15	15	4	7	0	3
Percent	50.0%	55.6%	76.5%	0.0%	22.2%	23.1%	53.3%	20.0%	50.0%	42.9%	0.0%	100.0%

Systemwide	FY05-3rdQtr	FY05-4thQtr	FY06-1stQtr	FY06-2ndQtr	FY06-3rdQtr	FY06-4thQtr	FY07-1stQtr	FY07-2ndQtr	FY07-3rdQtr	FY07-4thQtr	FY08-1stQtr	FY08-2ndQtr
Not Engaged	167	188	141	146	111	114	139	144	118	153	134	87
Discharges	358	321	252	277	250	271	273	308	304	375	308	239
Percent	46.6%	58.6%	56.0%	52.7%	44.4%	42.1%	50.9%	46.8%	38.8%	40.8%	43.5%	36.4%