

Substance Use-Trend Line

Reduction in Frequency of Substance Use from Admission to Discharge/Level of Care Change for the last Twelve Quarters
at (640) 12 & 12, INC.

Report Date : 2/5/2008

Data Last Updated on: 02/03/2008

Report Description:

National Outcome Measures (NOMs): <http://www.nationaloutcomemeasures.samhsa.gov/>

Domain: Reduced Morbidity

Outcome: Abstinence from Drug/Alcohol Use

Measure: Change in frequency of substance use from admission to discharge/level of care change

The information provided in this report reflects the number of discharges/level of care changes, rather than the number of individuals. For example, if a person is discharged five times during the selected time period, the number of discharges would be five. To be included in this report, at least one service must be reported after admission. Also, when an episode includes more than one service reported under multiple contract sources, the episode will be counted under each contract source, but will only be counted once under the 'All Contract Sources' or 'All Substance Abuse Contract Sources (PPMR)' report.

DEFINITIONS:

Excluded: Individuals are excluded from this measure for one or more of the following reasons:

- a. No substance use at admission
- b. Dependent or co-dependent (Primary Presenting Problem Codes: 745, 746, 747, 748, 749, 750, 751)
- c. Discharge type is code 68 (Death)
- d. Drug of choice at admission is not the same drug of choice at discharge/level of care change
- e. Detox is excluded because frequency of use is for last 30 days (average length of stay for detox is less than 7 days)

Increase: Frequency of use reported at discharge/level of care change is greater than that at admission.

No change: No change in use reported from admission to discharge/level of care change.

Reduction: Frequency of use was less at discharge/level of care change than at admission.

Admission: Individual begins treatment in a level of care.

Discharge: Individual leaves treatment at that agency.

Level of Care Change: Individual is moving from either detox, residential treatment, halfway house or outpatient to another level of care within an agency.

Systemwide: Represents all ODMHSAS-contracted and operated facilities which have that level of care and contract source.

All Substance Abuse Contract Sources (PPMR): Includes the following contract source codes: 02, 03, 17, 20, 21, 22, 23, 27, 29, 41, 44, 49, 54, 61 and 70. These contract sources are included in the Substance Abuse Provider Performance Management Report.

All Contract Sources: All contract sources which this agency reports.

Notes:

Data for this report are only updated by ODMHSAS staff at intervals. If the "Data Last Updated on:" is more than two weeks past, please contact Mark A. Reynolds at mreynolds@odmhsas.org or (405) 522-3824.

Discharge Codes:

Planned

60 - Completed Treatment
61 - Completed Court Treatment
40 - Level of Care Change

Unplanned

62 - Left ACA/90 Days
66 - Broke Rules
67 - AWOL
70 - Discharge Due to Treatment Incompatibility
92 - No service in 180 Days (auto-discharge)

Other

63 - Moved
64 - Transferred to another treatment facility
65 - Incarcerated
68 - Death
69 - Failed to begin Treatment

Substance Use-Trend Line

Reduction in Frequency of Substance Use from Admission to Discharge/Level of Care Change for the last Twelve Quarters

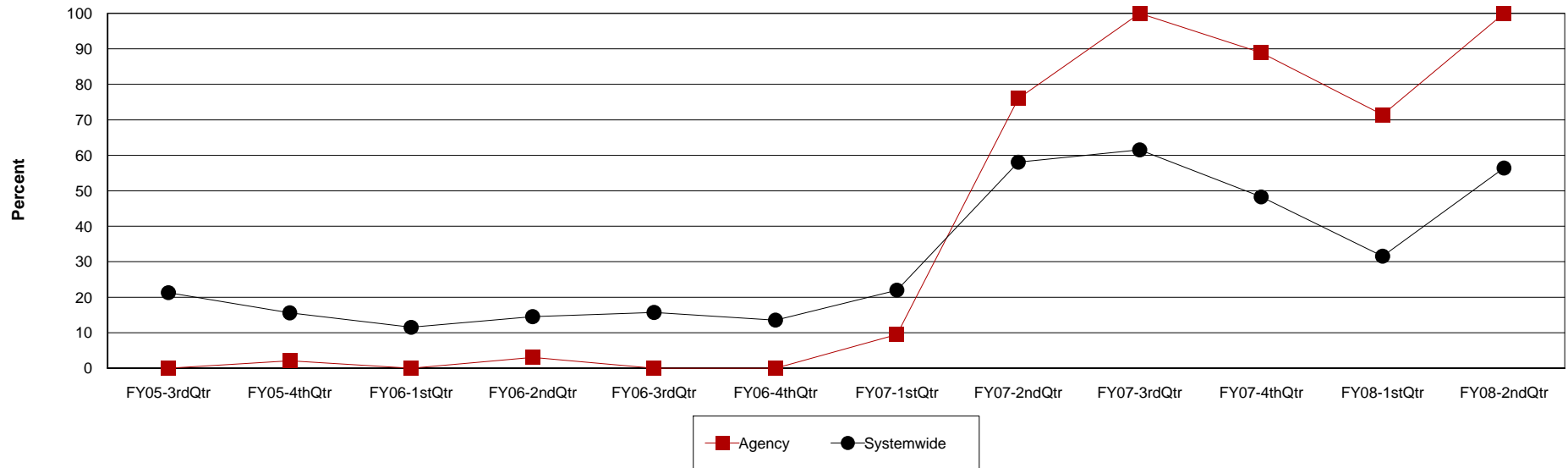
Agency: (640) 12 & 12, INC.

Level of Care: Halfway

Contract Source: All Substance Abuse Contract Sources (PPMR)

Age Group: Adults (18+)

Reduction in Frequency of Substance Use at 12 & 12, INC.



Agency	FY05-3rdQtr	FY05-4thQtr	FY06-1stQtr	FY06-2ndQtr	FY06-3rdQtr	FY06-4thQtr	FY07-1stQtr	FY07-2ndQtr	FY07-3rdQtr	FY07-4thQtr	FY08-1stQtr	FY08-2ndQtr
Reduction	0	1	0	2	0	0	6	19	8	16	5	12
Discharges	48	48	41	65	66	38	63	25	8	18	7	12
Percent	0.0%	2.1%	0.0%	3.1%	0.0%	0.0%	9.5%	76.0%	100.0%	88.9%	71.4%	100.0%

Systemwide	FY05-3rdQtr	FY05-4thQtr	FY06-1stQtr	FY06-2ndQtr	FY06-3rdQtr	FY06-4thQtr	FY07-1stQtr	FY07-2ndQtr	FY07-3rdQtr	FY07-4thQtr	FY08-1stQtr	FY08-2ndQtr
Reduction	23	15	9	15	17	11	24	36	24	28	12	22
Discharges	108	96	78	103	108	81	109	62	39	58	38	39
Percent	21.3%	15.6%	11.5%	14.6%	15.7%	13.6%	22.0%	58.1%	61.5%	48.3%	31.6%	56.4%

Substance Use-Trend Line

Reduction in Frequency of Substance Use from Admission to Discharge/Level of Care Change for the last Twelve Quarters

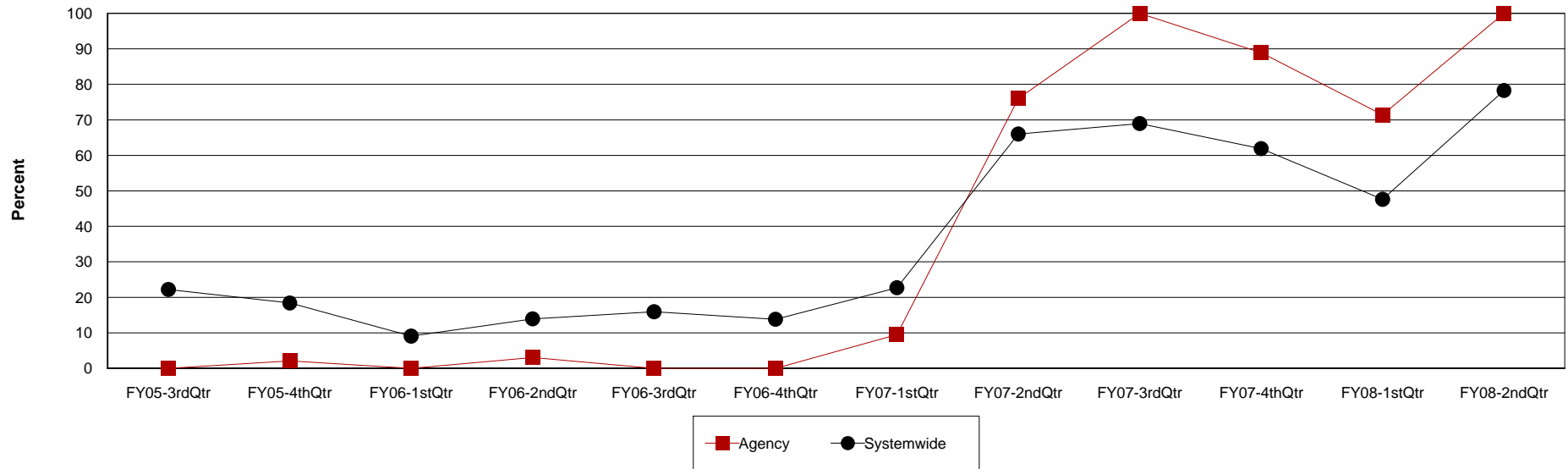
Agency: (640) 12 & 12, INC.

Level of Care: Halfway

Contract Source: All Contract Sources

Age Group: Adults (18+)

Reduction in Frequency of Substance Use at 12 & 12, INC.



Agency	FY05-3rdQtr	FY05-4thQtr	FY06-1stQtr	FY06-2ndQtr	FY06-3rdQtr	FY06-4thQtr	FY07-1stQtr	FY07-2ndQtr	FY07-3rdQtr	FY07-4thQtr	FY08-1stQtr	FY08-2ndQtr
Reduction	0	1	0	2	0	0	6	19	8	16	5	12
Discharges	48	48	41	65	66	38	63	25	8	18	7	12
Percent	0.0%	2.1%	0.0%	3.1%	0.0%	0.0%	9.5%	76.0%	100.0%	88.9%	71.4%	100.0%

Systemwide	FY05-3rdQtr	FY05-4thQtr	FY06-1stQtr	FY06-2ndQtr	FY06-3rdQtr	FY06-4thQtr	FY07-1stQtr	FY07-2ndQtr	FY07-3rdQtr	FY07-4thQtr	FY08-1stQtr	FY08-2ndQtr
Reduction	20	14	5	12	15	9	20	33	20	26	10	18
Discharges	90	76	55	86	94	65	88	50	29	42	21	23
Percent	22.2%	18.4%	9.1%	14.0%	16.0%	13.8%	22.7%	66.0%	69.0%	61.9%	47.6%	78.3%

Substance Use-Trend Line

Reduction in Frequency of Substance Use from Admission to Discharge/Level of Care Change for the last Twelve Quarters

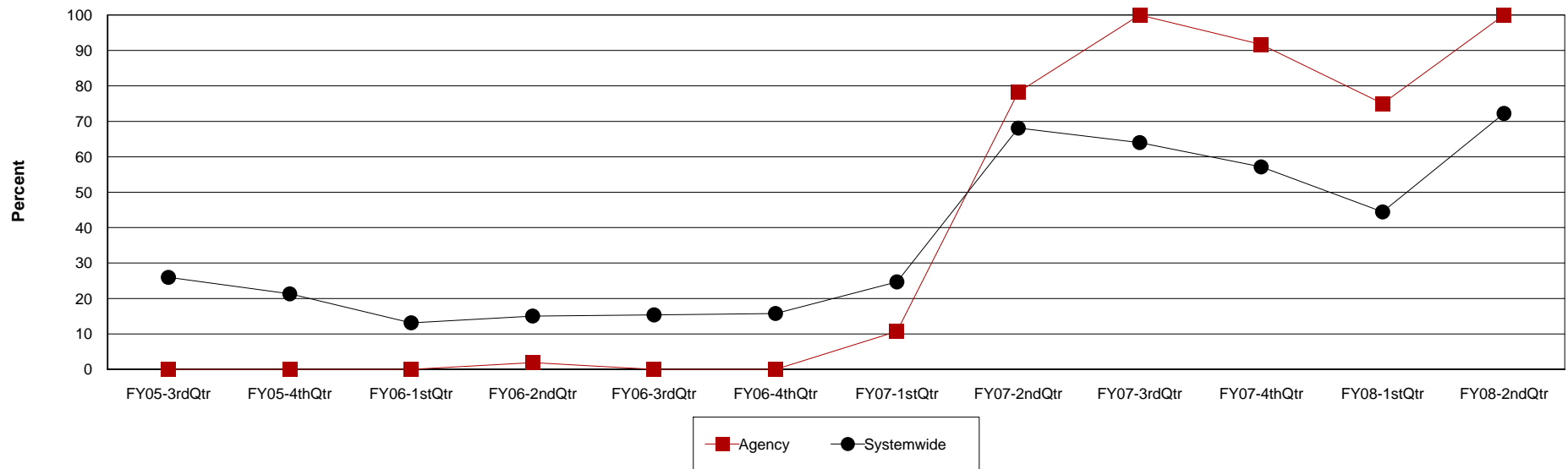
Agency: (640) 12 & 12, INC.

Level of Care: Halfway

Contract Source: (02) ALCOHOL/DRUG

Age Group: Adults (18+)

Reduction in Frequency of Substance Use at 12 & 12, INC.



Agency	FY05-3rdQtr	FY05-4thQtr	FY06-1stQtr	FY06-2ndQtr	FY06-3rdQtr	FY06-4thQtr	FY07-1stQtr	FY07-2ndQtr	FY07-3rdQtr	FY07-4thQtr	FY08-1stQtr	FY08-2ndQtr
Reduction	0	0	0	1	0	0	6	18	4	11	3	8
Discharges	35	33	24	53	64	32	56	23	4	12	4	8
Percent	0.0%	0.0%	0.0%	1.9%	0.0%	0.0%	10.7%	78.3%	100.0%	91.7%	75.0%	100.0%

Systemwide	FY05-3rdQtr	FY05-4thQtr	FY06-1stQtr	FY06-2ndQtr	FY06-3rdQtr	FY06-4thQtr	FY07-1stQtr	FY07-2ndQtr	FY07-3rdQtr	FY07-4thQtr	FY08-1stQtr	FY08-2ndQtr
Reduction	20	13	5	11	14	9	20	32	16	20	8	13
Discharges	77	61	38	73	91	57	81	47	25	35	18	18
Percent	26.0%	21.3%	13.2%	15.1%	15.4%	15.8%	24.7%	68.1%	64.0%	57.1%	44.4%	72.2%

Substance Use-Trend Line

Reduction in Frequency of Substance Use from Admission to Discharge/Level of Care Change for the last Twelve Quarters

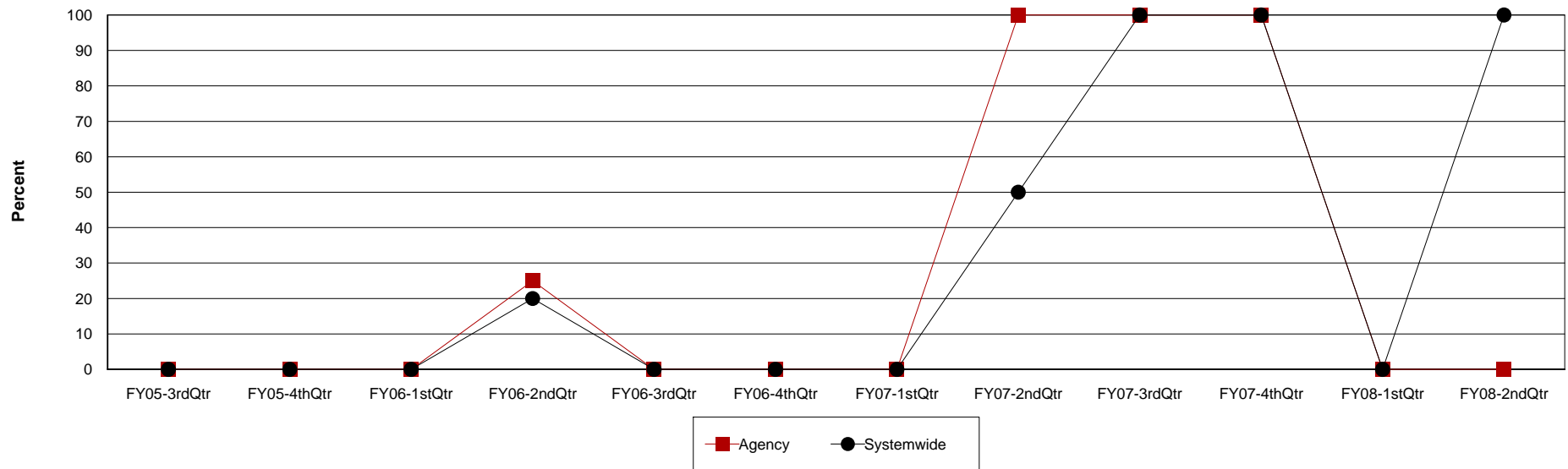
Agency: (640) 12 & 12, INC.

Level of Care: Halfway

Contract Source: (20) DRUG COURT

Age Group: Adults (18+)

Reduction in Frequency of Substance Use at 12 & 12, INC.



Agency	FY05-3rdQtr	FY05-4thQtr	FY06-1stQtr	FY06-2ndQtr	FY06-3rdQtr	FY06-4thQtr	FY07-1stQtr	FY07-2ndQtr	FY07-3rdQtr	FY07-4thQtr	FY08-1stQtr	FY08-2ndQtr
Reduction	0	0	0	1	0	0	0	1	1	2	0	0
Discharges	0	1	2	4	0	0	0	1	1	2	0	0
Percent	0.0%	0.0%	0.0%	25.0%	0.0%	0.0%	0.0%	100.0%	100.0%	100.0%	0.0%	0.0%

Systemwide	FY05-3rdQtr	FY05-4thQtr	FY06-1stQtr	FY06-2ndQtr	FY06-3rdQtr	FY06-4thQtr	FY07-1stQtr	FY07-2ndQtr	FY07-3rdQtr	FY07-4thQtr	FY08-1stQtr	FY08-2ndQtr
Reduction	0	0	0	1	0	0	0	1	1	3	0	1
Discharges	0	1	2	5	0	3	0	2	1	3	0	1
Percent	0.0%	0.0%	0.0%	20.0%	0.0%	0.0%	0.0%	50.0%	100.0%	100.0%	0.0%	100.0%

Substance Use-Trend Line

Reduction in Frequency of Substance Use from Admission to Discharge/Level of Care Change for the last Twelve Quarters

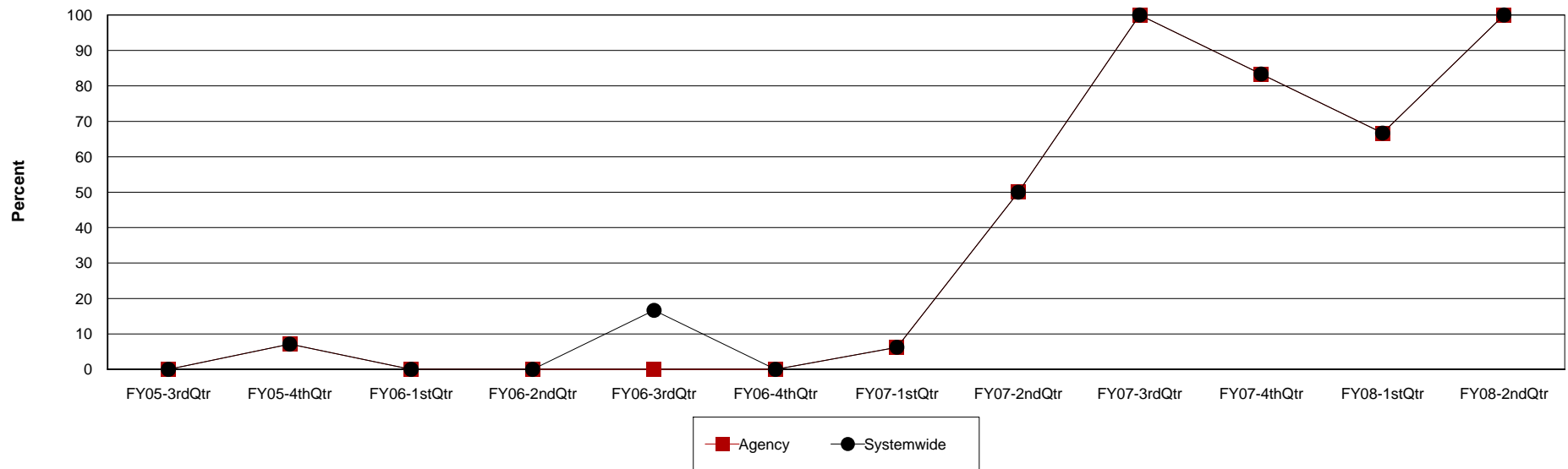
Agency: (640) 12 & 12, INC.

Level of Care: Halfway

Contract Source: (21) ALCOHOL/DRUG SPECIALIZED PROGRAMS

Age Group: Adults (18+)

Reduction in Frequency of Substance Use at 12 & 12, INC.



Agency	FY05-3rdQtr	FY05-4thQtr	FY06-1stQtr	FY06-2ndQtr	FY06-3rdQtr	FY06-4thQtr	FY07-1stQtr	FY07-2ndQtr	FY07-3rdQtr	FY07-4thQtr	FY08-1stQtr	FY08-2ndQtr
Reduction	0	1	0	0	0	0	1	2	3	5	2	4
Discharges	13	14	15	8	5	7	16	4	3	6	3	4
Percent	0.0%	7.1%	0.0%	0.0%	0.0%	0.0%	6.3%	50.0%	100.0%	83.3%	66.7%	100.0%

Systemwide	FY05-3rdQtr	FY05-4thQtr	FY06-1stQtr	FY06-2ndQtr	FY06-3rdQtr	FY06-4thQtr	FY07-1stQtr	FY07-2ndQtr	FY07-3rdQtr	FY07-4thQtr	FY08-1stQtr	FY08-2ndQtr
Reduction	0	1	0	0	1	0	1	2	3	5	2	4
Discharges	13	14	15	8	6	7	16	4	3	6	3	4
Percent	0.0%	7.1%	0.0%	0.0%	16.7%	0.0%	6.3%	50.0%	100.0%	83.3%	66.7%	100.0%

Substance Use-Trend Line

Reduction in Frequency of Substance Use from Admission to Discharge/Level of Care Change for the last Twelve Quarters

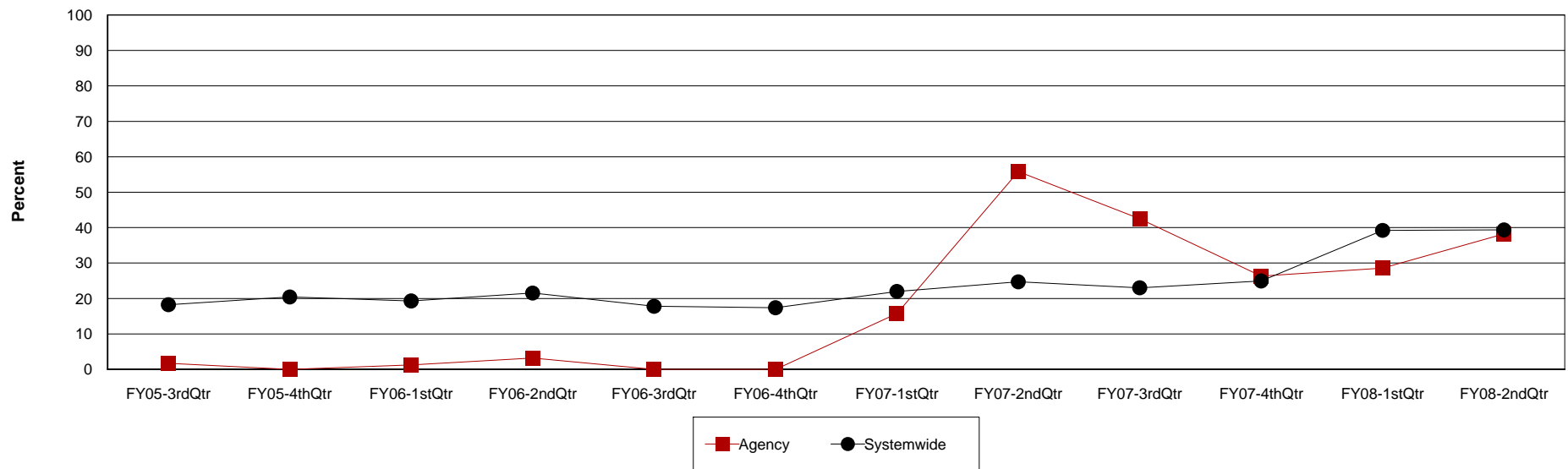
Agency: (640) 12 & 12, INC.

Level of Care: Outpatient

Contract Source: All Substance Abuse Contract Sources (PPMR)

Age Group: Adults (18+)

Reduction in Frequency of Substance Use at 12 & 12, INC.



Agency	FY05-3rdQtr	FY05-4thQtr	FY06-1stQtr	FY06-2ndQtr	FY06-3rdQtr	FY06-4thQtr	FY07-1stQtr	FY07-2ndQtr	FY07-3rdQtr	FY07-4thQtr	FY08-1stQtr	FY08-2ndQtr
Reduction	1	0	1	1	0	0	12	24	17	10	8	13
Discharges	58	63	80	31	45	54	76	43	40	38	28	34
Percent	1.7%	0.0%	1.3%	3.2%	0.0%	0.0%	15.8%	55.8%	42.5%	26.3%	28.6%	38.2%

Systemwide	FY05-3rdQtr	FY05-4thQtr	FY06-1stQtr	FY06-2ndQtr	FY06-3rdQtr	FY06-4thQtr	FY07-1stQtr	FY07-2ndQtr	FY07-3rdQtr	FY07-4thQtr	FY08-1stQtr	FY08-2ndQtr
Reduction	199	230	212	217	164	156	229	250	264	292	395	274
Discharges	1,090	1,125	1,098	1,007	921	896	1,040	1,011	1,146	1,169	1,007	696
Percent	18.3%	20.4%	19.3%	21.5%	17.8%	17.4%	22.0%	24.7%	23.0%	25.0%	39.2%	39.4%

Substance Use-Trend Line

Reduction in Frequency of Substance Use from Admission to Discharge/Level of Care Change for the last Twelve Quarters

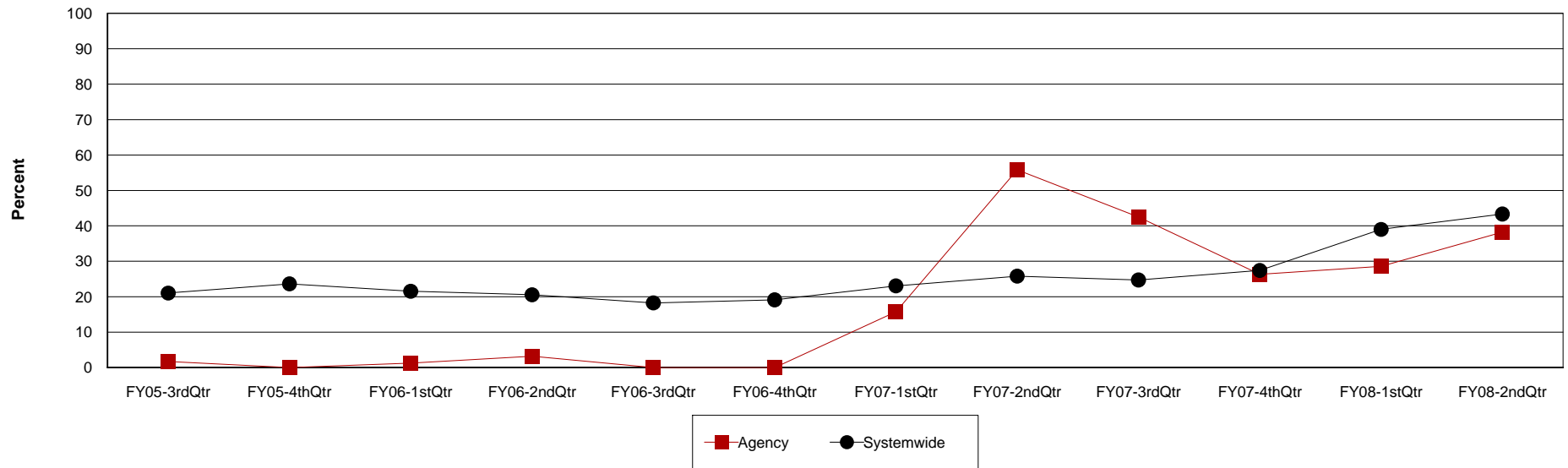
Agency: (640) 12 & 12, INC.

Level of Care: Outpatient

Contract Source: All Contract Sources

Age Group: Adults (18+)

Reduction in Frequency of Substance Use at 12 & 12, INC.



Agency	FY05-3rdQtr	FY05-4thQtr	FY06-1stQtr	FY06-2ndQtr	FY06-3rdQtr	FY06-4thQtr	FY07-1stQtr	FY07-2ndQtr	FY07-3rdQtr	FY07-4thQtr	FY08-1stQtr	FY08-2ndQtr
Reduction	1	0	1	1	0	0	12	24	17	10	8	13
Discharges	58	63	80	31	45	54	76	43	40	38	28	34
Percent	1.7%	0.0%	1.3%	3.2%	0.0%	0.0%	15.8%	55.8%	42.5%	26.3%	28.6%	38.2%

Systemwide	FY05-3rdQtr	FY05-4thQtr	FY06-1stQtr	FY06-2ndQtr	FY06-3rdQtr	FY06-4thQtr	FY07-1stQtr	FY07-2ndQtr	FY07-3rdQtr	FY07-4thQtr	FY08-1stQtr	FY08-2ndQtr
Reduction	174	190	173	159	132	130	185	206	217	232	307	241
Discharges	827	804	803	773	723	680	802	798	877	846	787	556
Percent	21.0%	23.6%	21.5%	20.6%	18.3%	19.1%	23.1%	25.8%	24.7%	27.4%	39.0%	43.3%

Substance Use-Trend Line

Reduction in Frequency of Substance Use from Admission to Discharge/Level of Care Change for the last Twelve Quarters

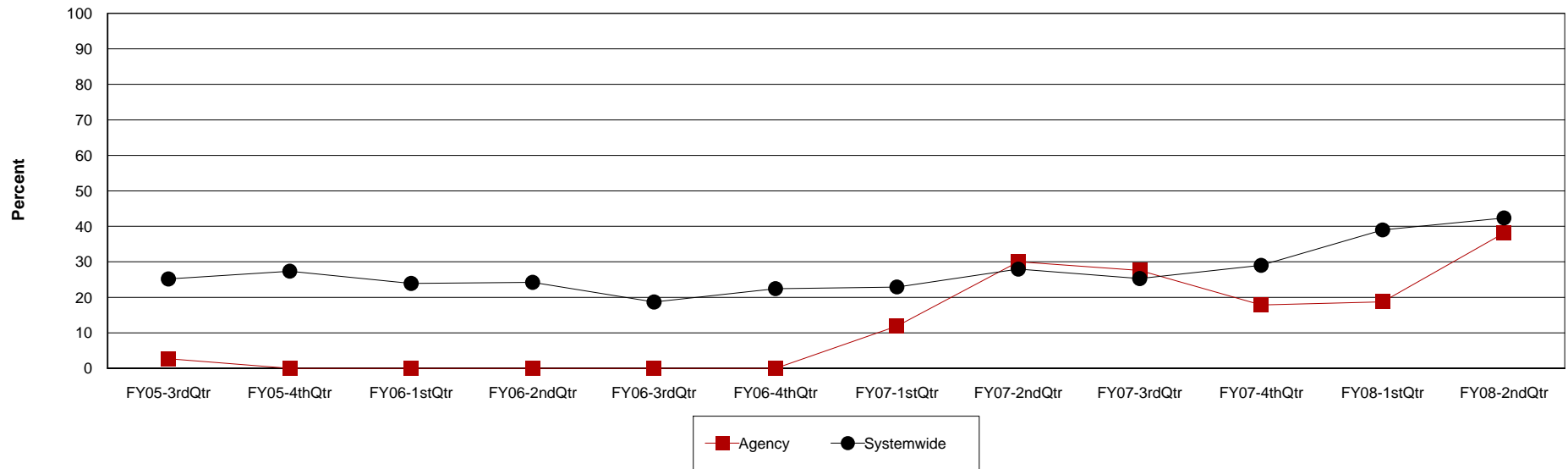
Agency: (640) 12 & 12, INC.

Level of Care: Outpatient

Contract Source: (02) ALCOHOL/DRUG

Age Group: Adults (18+)

Reduction in Frequency of Substance Use at 12 & 12, INC.



Agency	FY05-3rdQtr	FY05-4thQtr	FY06-1stQtr	FY06-2ndQtr	FY06-3rdQtr	FY06-4thQtr	FY07-1stQtr	FY07-2ndQtr	FY07-3rdQtr	FY07-4thQtr	FY08-1stQtr	FY08-2ndQtr
Reduction	1	0	0	0	0	0	5	6	8	5	3	8
Discharges	37	38	46	17	28	38	42	20	29	28	16	21
Percent	2.7%	0.0%	0.0%	0.0%	0.0%	0.0%	11.9%	30.0%	27.6%	17.9%	18.8%	38.1%

Systemwide	FY05-3rdQtr	FY05-4thQtr	FY06-1stQtr	FY06-2ndQtr	FY06-3rdQtr	FY06-4thQtr	FY07-1stQtr	FY07-2ndQtr	FY07-3rdQtr	FY07-4thQtr	FY08-1stQtr	FY08-2ndQtr
Reduction	129	150	134	122	89	97	108	116	124	128	156	133
Discharges	512	548	560	503	476	432	471	415	490	441	400	314
Percent	25.2%	27.4%	23.9%	24.3%	18.7%	22.5%	22.9%	28.0%	25.3%	29.0%	39.0%	42.4%

Substance Use-Trend Line

Reduction in Frequency of Substance Use from Admission to Discharge/Level of Care Change for the last Twelve Quarters

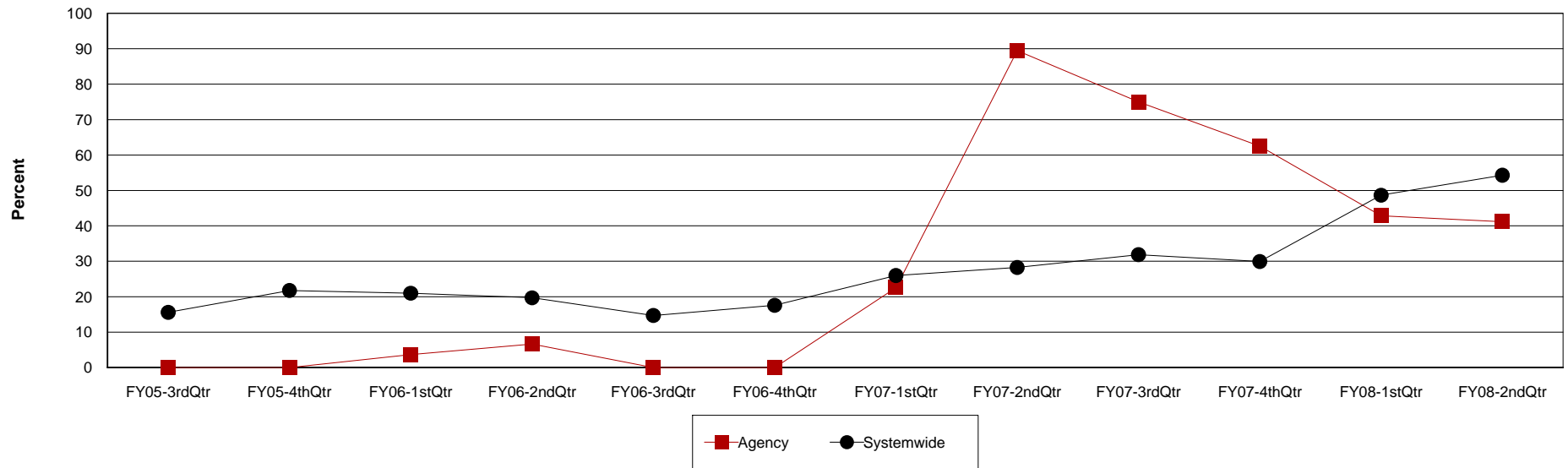
Agency: (640) 12 & 12, INC.

Level of Care: Outpatient

Contract Source: (20) DRUG COURT

Age Group: Adults (18+)

Reduction in Frequency of Substance Use at 12 & 12, INC.



Agency	FY05-3rdQtr	FY05-4thQtr	FY06-1stQtr	FY06-2ndQtr	FY06-3rdQtr	FY06-4thQtr	FY07-1stQtr	FY07-2ndQtr	FY07-3rdQtr	FY07-4thQtr	FY08-1stQtr	FY08-2ndQtr
Reduction	0	0	1	1	0	0	7	17	9	5	6	7
Discharges	16	16	27	15	18	13	31	19	12	8	14	17
Percent	0.0%	0.0%	3.7%	6.7%	0.0%	0.0%	22.6%	89.5%	75.0%	62.5%	42.9%	41.2%

Systemwide	FY05-3rdQtr	FY05-4thQtr	FY06-1stQtr	FY06-2ndQtr	FY06-3rdQtr	FY06-4thQtr	FY07-1stQtr	FY07-2ndQtr	FY07-3rdQtr	FY07-4thQtr	FY08-1stQtr	FY08-2ndQtr
Reduction	22	32	38	40	29	32	66	76	103	91	145	95
Discharges	141	147	181	203	197	182	254	269	323	304	298	175
Percent	15.6%	21.8%	21.0%	19.7%	14.7%	17.6%	26.0%	28.3%	31.9%	29.9%	48.7%	54.3%

Substance Use-Trend Line

Reduction in Frequency of Substance Use from Admission to Discharge/Level of Care Change for the last Twelve Quarters

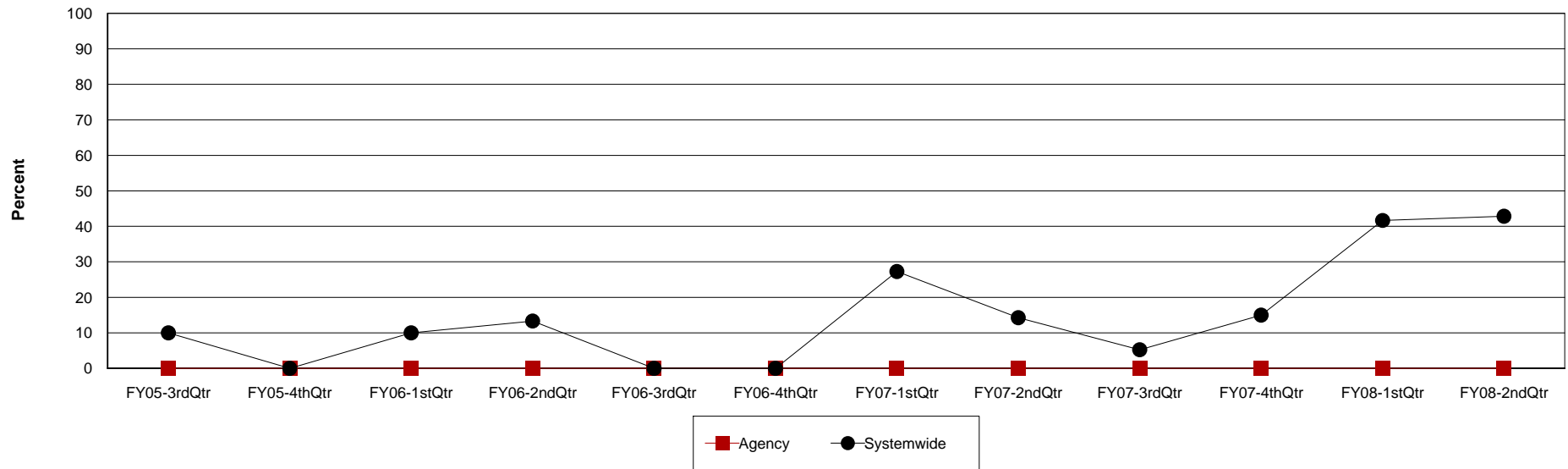
Agency: (640) 12 & 12, INC.

Level of Care: Outpatient

Contract Source: (21) ALCOHOL/DRUG SPECIALIZED PROGRAMS

Age Group: Adults (18+)

Reduction in Frequency of Substance Use at 12 & 12, INC.



Agency	FY05-3rdQtr	FY05-4thQtr	FY06-1stQtr	FY06-2ndQtr	FY06-3rdQtr	FY06-4thQtr	FY07-1stQtr	FY07-2ndQtr	FY07-3rdQtr	FY07-4thQtr	FY08-1stQtr	FY08-2ndQtr
Reduction	0	0	0	0	0	0	0	0	0	0	0	0
Discharges	0	0	1	0	1	0	0	0	0	1	0	0
Percent	0.0%	0.0%	0.0%	0.0%	0.0%	0.0%	0.0%	0.0%	0.0%	0.0%	0.0%	0.0%

Systemwide	FY05-3rdQtr	FY05-4thQtr	FY06-1stQtr	FY06-2ndQtr	FY06-3rdQtr	FY06-4thQtr	FY07-1stQtr	FY07-2ndQtr	FY07-3rdQtr	FY07-4thQtr	FY08-1stQtr	FY08-2ndQtr
Reduction	1	0	1	2	0	0	3	4	1	3	5	3
Discharges	10	13	10	15	21	10	11	28	19	20	12	7
Percent	10.0%	0.0%	10.0%	13.3%	0.0%	0.0%	27.3%	14.3%	5.3%	15.0%	41.7%	42.9%

Substance Use-Trend Line

Reduction in Frequency of Substance Use from Admission to Discharge/Level of Care Change for the last Twelve Quarters

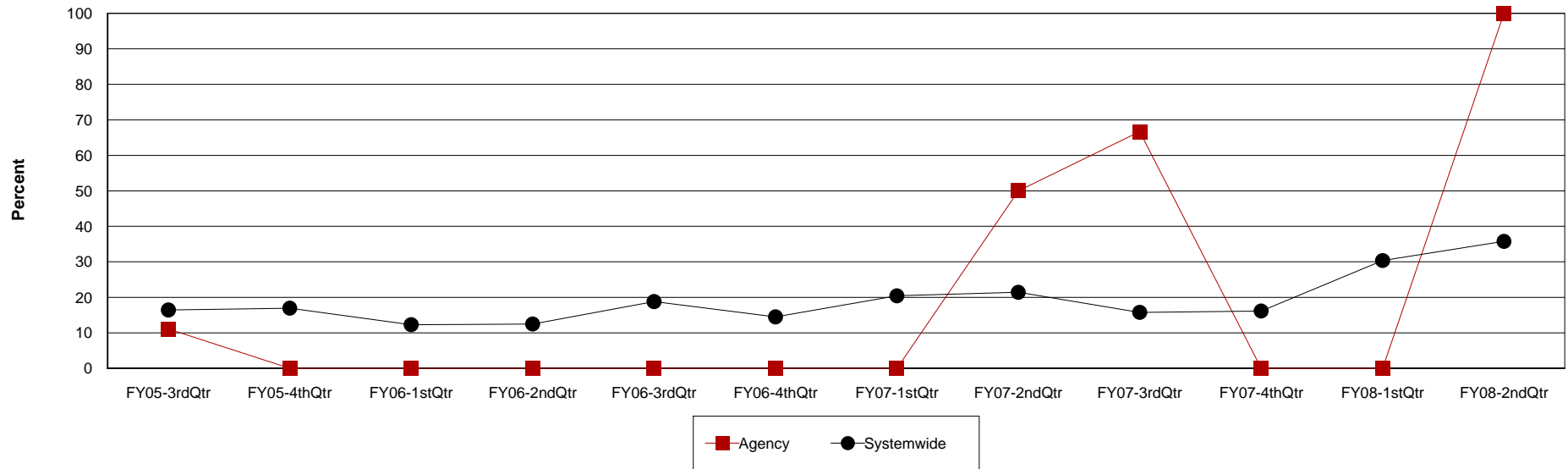
Agency: (640) 12 & 12, INC.

Level of Care: Outpatient

Contract Source: (29) PROBATION AND PAROLE

Age Group: Adults (18+)

Reduction in Frequency of Substance Use at 12 & 12, INC.



Agency	FY05-3rdQtr	FY05-4thQtr	FY06-1stQtr	FY06-2ndQtr	FY06-3rdQtr	FY06-4thQtr	FY07-1stQtr	FY07-2ndQtr	FY07-3rdQtr	FY07-4thQtr	FY08-1stQtr	FY08-2ndQtr
Reduction	1	0	0	0	0	0	0	3	2	0	0	2
Discharges	9	13	11	0	2	6	6	6	3	3	0	2
Percent	11.1%	0.0%	0.0%	0.0%	0.0%	0.0%	0.0%	50.0%	66.7%	0.0%	0.0%	100.0%

Systemwide	FY05-3rdQtr	FY05-4thQtr	FY06-1stQtr	FY06-2ndQtr	FY06-3rdQtr	FY06-4thQtr	FY07-1stQtr	FY07-2ndQtr	FY07-3rdQtr	FY07-4thQtr	FY08-1stQtr	FY08-2ndQtr
Reduction	37	28	16	17	22	18	28	33	21	27	48	39
Discharges	225	165	130	136	117	124	137	154	133	167	158	109
Percent	16.4%	17.0%	12.3%	12.5%	18.8%	14.5%	20.4%	21.4%	15.8%	16.2%	30.4%	35.8%

Substance Use-Trend Line

Reduction in Frequency of Substance Use from Admission to Discharge/Level of Care Change for the last Twelve Quarters

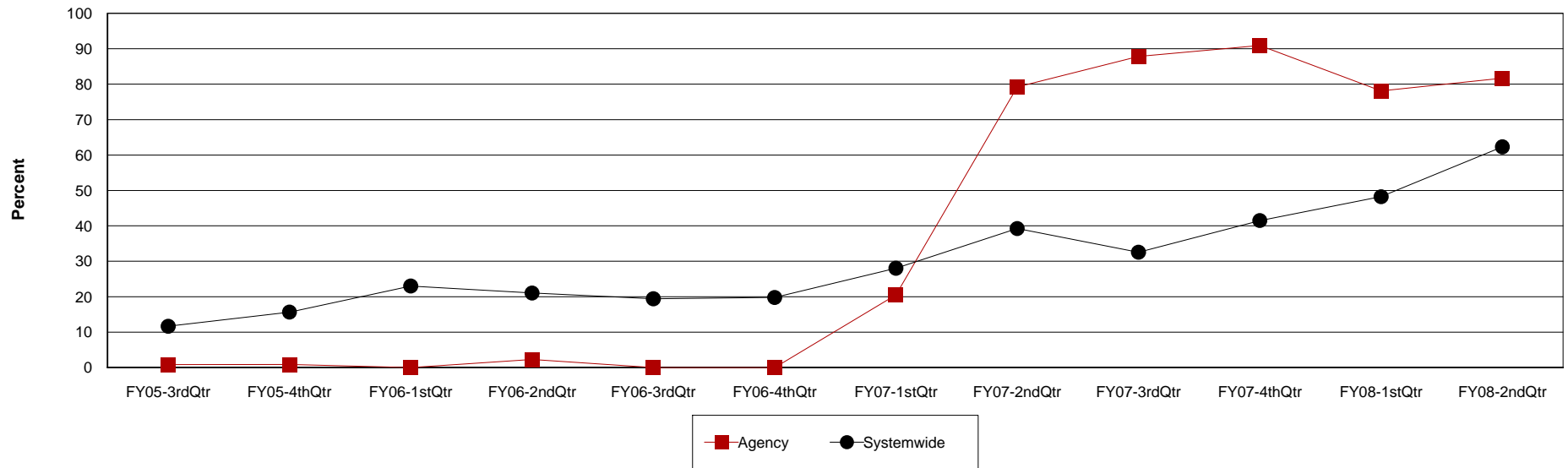
Agency: (640) 12 & 12, INC.

Level of Care: Residential Treatment

Contract Source: All Substance Abuse Contract Sources (PPMR)

Age Group: Adults (18+)

Reduction in Frequency of Substance Use at 12 & 12, INC.



Agency	FY05-3rdQtr	FY05-4thQtr	FY06-1stQtr	FY06-2ndQtr	FY06-3rdQtr	FY06-4thQtr	FY07-1stQtr	FY07-2ndQtr	FY07-3rdQtr	FY07-4thQtr	FY08-1stQtr	FY08-2ndQtr
Reduction	1	1	0	3	0	0	24	80	101	100	82	98
Discharges	118	113	135	132	94	96	117	101	115	110	105	120
Percent	0.8%	0.9%	0.0%	2.3%	0.0%	0.0%	20.5%	79.2%	87.8%	90.9%	78.1%	81.7%

Systemwide	FY05-3rdQtr	FY05-4thQtr	FY06-1stQtr	FY06-2ndQtr	FY06-3rdQtr	FY06-4thQtr	FY07-1stQtr	FY07-2ndQtr	FY07-3rdQtr	FY07-4thQtr	FY08-1stQtr	FY08-2ndQtr
Reduction	89	124	178	176	153	144	214	281	238	342	370	463
Discharges	762	791	773	836	788	727	763	716	731	824	767	743
Percent	11.7%	15.7%	23.0%	21.1%	19.4%	19.8%	28.0%	39.2%	32.6%	41.5%	48.2%	62.3%

Substance Use-Trend Line

Reduction in Frequency of Substance Use from Admission to Discharge/Level of Care Change for the last Twelve Quarters

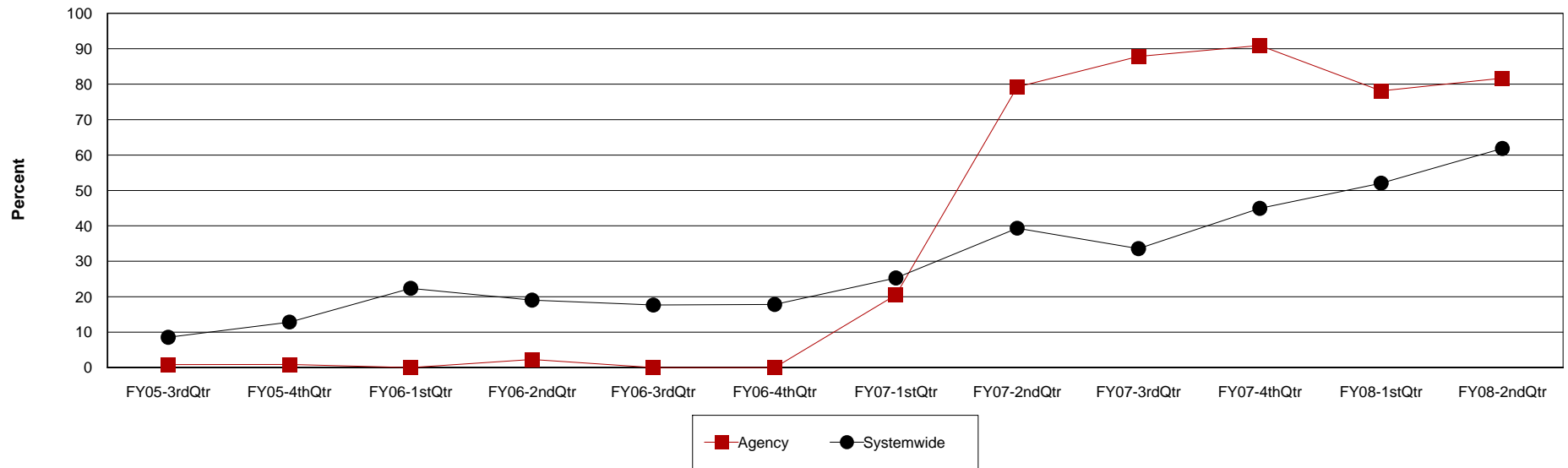
Agency: (640) 12 & 12, INC.

Level of Care: Residential Treatment

Contract Source: All Contract Sources

Age Group: Adults (18+)

Reduction in Frequency of Substance Use at 12 & 12, INC.



Agency	FY05-3rdQtr	FY05-4thQtr	FY06-1stQtr	FY06-2ndQtr	FY06-3rdQtr	FY06-4thQtr	FY07-1stQtr	FY07-2ndQtr	FY07-3rdQtr	FY07-4thQtr	FY08-1stQtr	FY08-2ndQtr
Reduction	1	1	0	3	0	0	24	80	101	100	82	98
Discharges	118	113	135	132	94	96	117	101	115	110	105	120
Percent	0.8%	0.9%	0.0%	2.3%	0.0%	0.0%	20.5%	79.2%	87.8%	90.9%	78.1%	81.7%

Systemwide	FY05-3rdQtr	FY05-4thQtr	FY06-1stQtr	FY06-2ndQtr	FY06-3rdQtr	FY06-4thQtr	FY07-1stQtr	FY07-2ndQtr	FY07-3rdQtr	FY07-4thQtr	FY08-1stQtr	FY08-2ndQtr
Reduction	55	84	132	123	101	94	147	203	179	271	302	381
Discharges	643	653	590	646	572	527	581	516	533	603	580	616
Percent	8.6%	12.9%	22.4%	19.0%	17.7%	17.8%	25.3%	39.3%	33.6%	44.9%	52.1%	61.9%

Substance Use-Trend Line

Reduction in Frequency of Substance Use from Admission to Discharge/Level of Care Change for the last Twelve Quarters

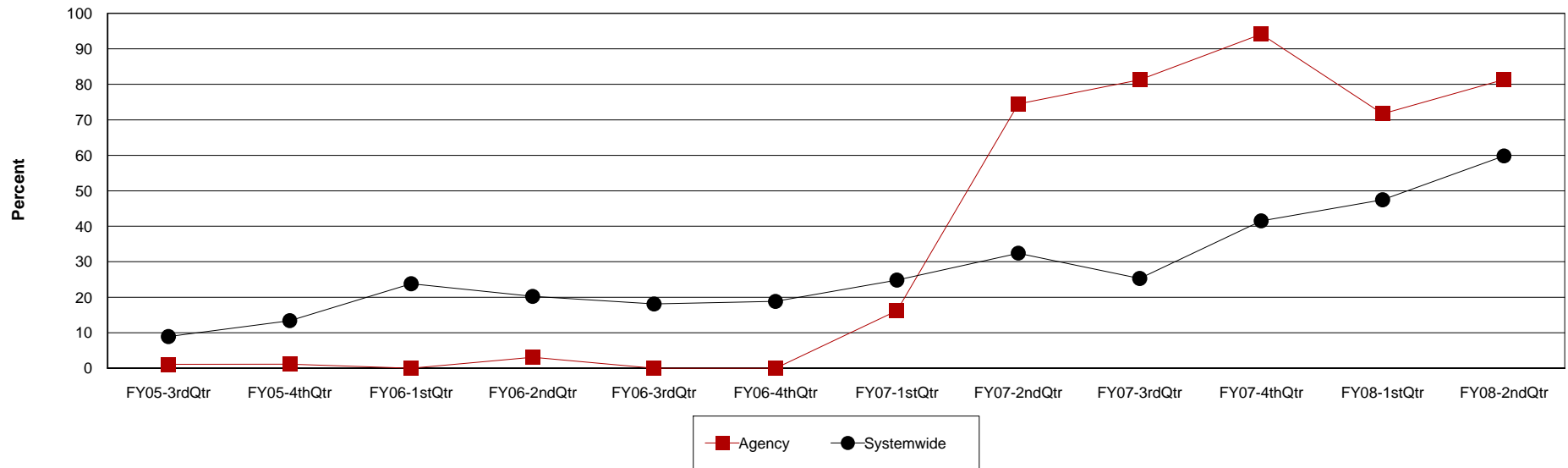
Agency: (640) 12 & 12, INC.

Level of Care: Residential Treatment

Contract Source: (02) ALCOHOL/DRUG

Age Group: Adults (18+)

Reduction in Frequency of Substance Use at 12 & 12, INC.



Agency	FY05-3rdQtr	FY05-4thQtr	FY06-1stQtr	FY06-2ndQtr	FY06-3rdQtr	FY06-4thQtr	FY07-1stQtr	FY07-2ndQtr	FY07-3rdQtr	FY07-4thQtr	FY08-1stQtr	FY08-2ndQtr
Reduction	1	1	0	3	0	0	12	35	39	48	38	61
Discharges	90	86	99	96	77	68	74	47	48	51	53	75
Percent	1.1%	1.2%	0.0%	3.1%	0.0%	0.0%	16.2%	74.5%	81.3%	94.1%	71.7%	81.3%

Systemwide	FY05-3rdQtr	FY05-4thQtr	FY06-1stQtr	FY06-2ndQtr	FY06-3rdQtr	FY06-4thQtr	FY07-1stQtr	FY07-2ndQtr	FY07-3rdQtr	FY07-4thQtr	FY08-1stQtr	FY08-2ndQtr
Reduction	55	84	132	123	100	94	123	131	102	206	242	335
Discharges	615	626	554	607	552	499	495	404	403	496	510	560
Percent	8.9%	13.4%	23.8%	20.3%	18.1%	18.8%	24.8%	32.4%	25.3%	41.5%	47.5%	59.8%

Substance Use-Trend Line

Reduction in Frequency of Substance Use from Admission to Discharge/Level of Care Change for the last Twelve Quarters

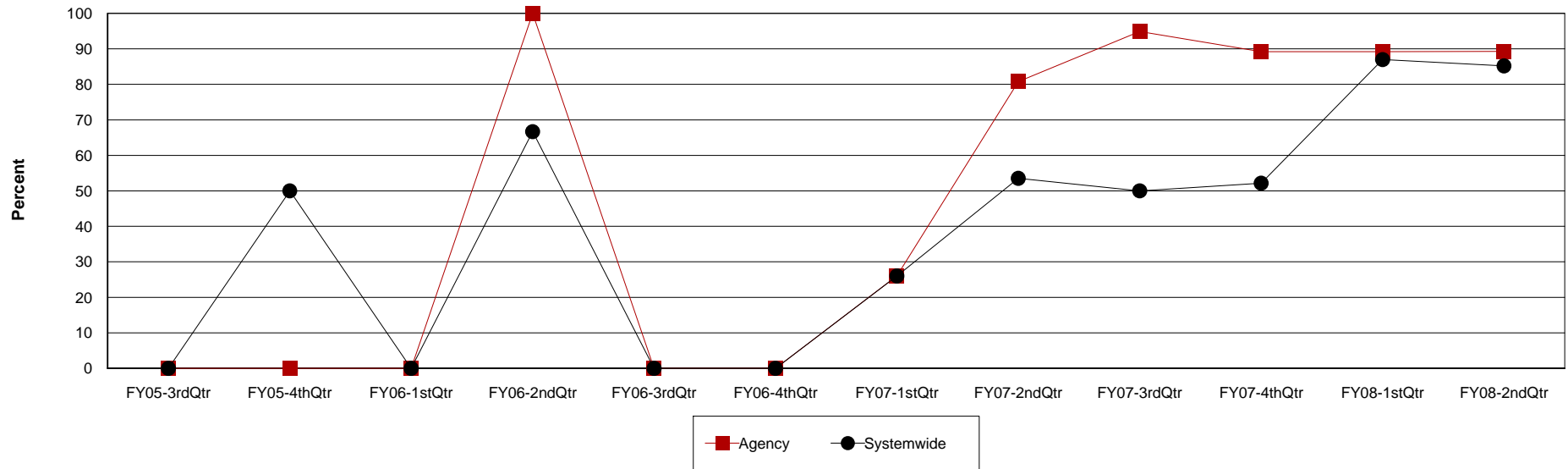
Agency: (640) 12 & 12, INC.

Level of Care: Residential Treatment

Contract Source: (20) DRUG COURT

Age Group: Adults (18+)

Reduction in Frequency of Substance Use at 12 & 12, INC.



Agency	FY05-3rdQtr	FY05-4thQtr	FY06-1stQtr	FY06-2ndQtr	FY06-3rdQtr	FY06-4thQtr	FY07-1stQtr	FY07-2ndQtr	FY07-3rdQtr	FY07-4thQtr	FY08-1stQtr	FY08-2ndQtr
Reduction	0	0	0	1	0	0	6	21	37	33	33	25
Discharges	0	0	0	1	0	1	23	26	39	37	37	28
Percent	0.0%	0.0%	0.0%	100.0%	0.0%	0.0%	26.1%	80.8%	94.9%	89.2%	89.2%	89.3%

Systemwide	FY05-3rdQtr	FY05-4thQtr	FY06-1stQtr	FY06-2ndQtr	FY06-3rdQtr	FY06-4thQtr	FY07-1stQtr	FY07-2ndQtr	FY07-3rdQtr	FY07-4thQtr	FY08-1stQtr	FY08-2ndQtr
Reduction	0	1	0	2	0	0	25	53	55	60	60	46
Discharges	0	2	0	3	3	4	96	99	110	115	69	54
Percent	0.0%	50.0%	0.0%	66.7%	0.0%	0.0%	26.0%	53.5%	50.0%	52.2%	87.0%	85.2%

Substance Use-Trend Line

Reduction in Frequency of Substance Use from Admission to Discharge/Level of Care Change for the last Twelve Quarters

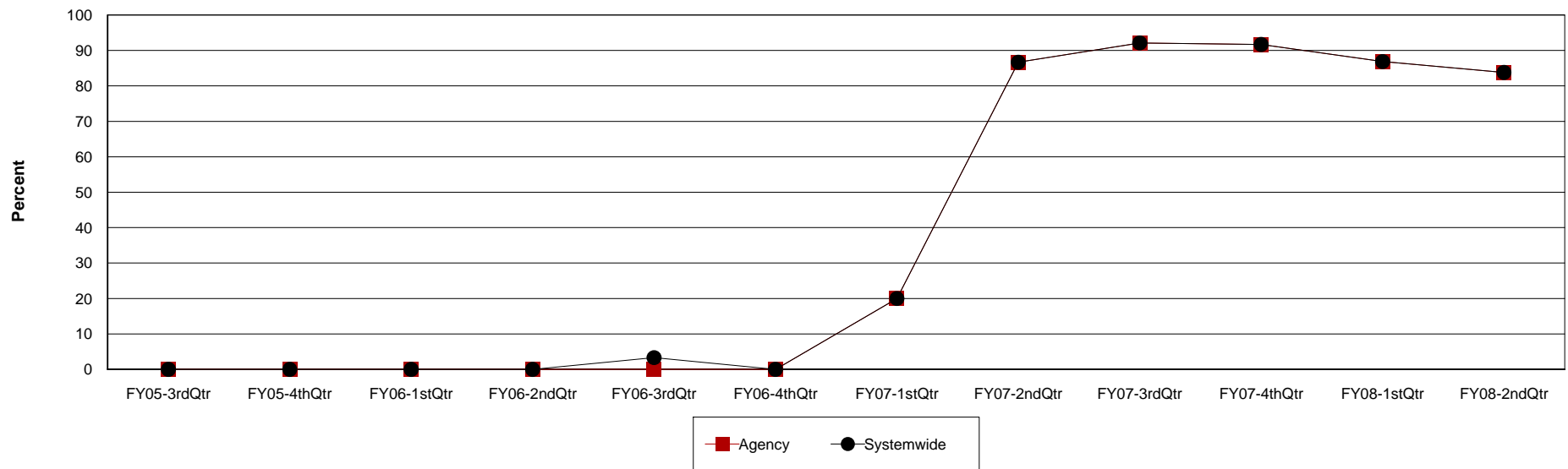
Agency: (640) 12 & 12, INC.

Level of Care: Residential Treatment

Contract Source: (21) ALCOHOL/DRUG SPECIALIZED PROGRAMS

Age Group: Adults (18+)

Reduction in Frequency of Substance Use at 12 & 12, INC.



Agency	FY05-3rdQtr	FY05-4thQtr	FY06-1stQtr	FY06-2ndQtr	FY06-3rdQtr	FY06-4thQtr	FY07-1stQtr	FY07-2ndQtr	FY07-3rdQtr	FY07-4thQtr	FY08-1stQtr	FY08-2ndQtr
Reduction	0	0	0	0	0	0	7	26	35	33	33	31
Discharges	30	36	51	53	29	39	35	30	38	36	38	37
Percent	0.0%	0.0%	0.0%	0.0%	0.0%	0.0%	20.0%	86.7%	92.1%	91.7%	86.8%	83.8%

Systemwide	FY05-3rdQtr	FY05-4thQtr	FY06-1stQtr	FY06-2ndQtr	FY06-3rdQtr	FY06-4thQtr	FY07-1stQtr	FY07-2ndQtr	FY07-3rdQtr	FY07-4thQtr	FY08-1stQtr	FY08-2ndQtr
Reduction	0	0	0	0	1	0	7	26	35	33	33	31
Discharges	30	36	51	53	30	39	35	30	38	36	38	37
Percent	0.0%	0.0%	0.0%	0.0%	3.3%	0.0%	20.0%	86.7%	92.1%	91.7%	86.8%	83.8%

Substance Use-Trend Line

Reduction in Frequency of Substance Use from Admission to Discharge/Level of Care Change for the last Twelve Quarters

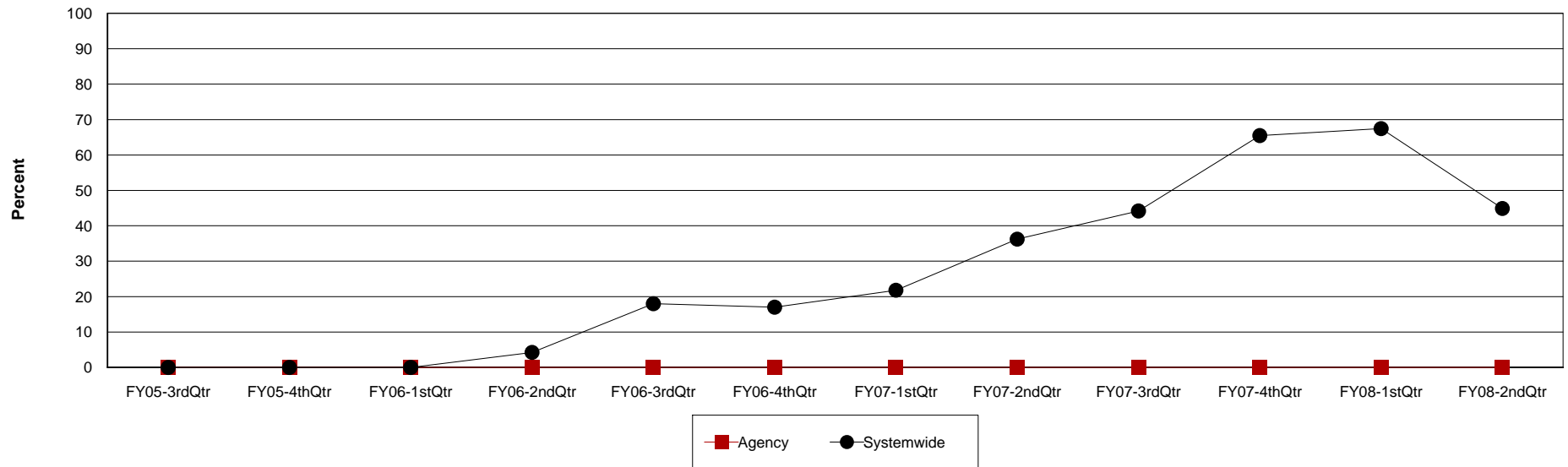
Agency: (640) 12 & 12, INC.

Level of Care: Residential Treatment

Contract Source: All Substance Abuse Contract Sources (PPMR)

Age Group: Children (0-17)

Reduction in Frequency of Substance Use at 12 & 12, INC.



Agency	FY05-3rdQtr	FY05-4thQtr	FY06-1stQtr	FY06-2ndQtr	FY06-3rdQtr	FY06-4thQtr	FY07-1stQtr	FY07-2ndQtr	FY07-3rdQtr	FY07-4thQtr	FY08-1stQtr	FY08-2ndQtr
Reduction	0	0	0	0	0	0	0	0	0	0	0	0
Discharges	0	0	0	1	0	0	0	0	0	0	0	0
Percent	0.0%	0.0%	0.0%	0.0%	0.0%	0.0%	0.0%	0.0%	0.0%	0.0%	0.0%	0.0%

Systemwide	FY05-3rdQtr	FY05-4thQtr	FY06-1stQtr	FY06-2ndQtr	FY06-3rdQtr	FY06-4thQtr	FY07-1stQtr	FY07-2ndQtr	FY07-3rdQtr	FY07-4thQtr	FY08-1stQtr	FY08-2ndQtr
Reduction	0	0	0	2	9	8	12	25	19	36	29	22
Discharges	19	17	30	47	50	47	55	69	43	55	43	49
Percent	0.0%	0.0%	0.0%	4.3%	18.0%	17.0%	21.8%	36.2%	44.2%	65.5%	67.4%	44.9%

Substance Use-Trend Line

Reduction in Frequency of Substance Use from Admission to Discharge/Level of Care Change for the last Twelve Quarters

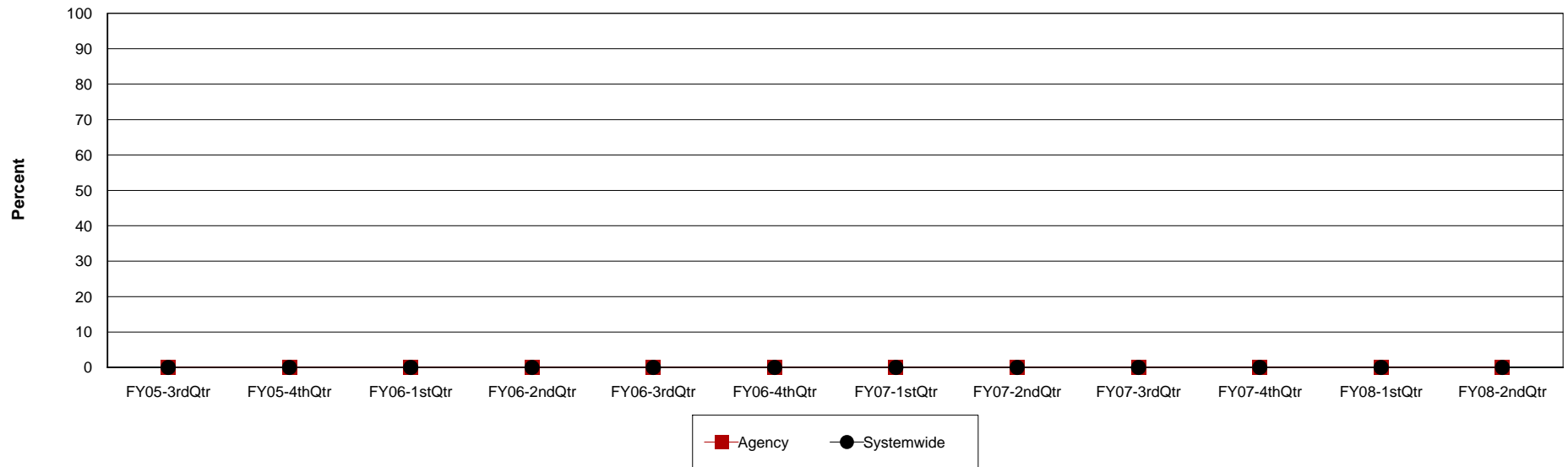
Agency: (640) 12 & 12, INC.

Level of Care: Residential Treatment

Contract Source: (21) ALCOHOL/DRUG SPECIALIZED PROGRAMS

Age Group: Children (0-17)

Reduction in Frequency of Substance Use at 12 & 12, INC.



Agency	FY05-3rdQtr	FY05-4thQtr	FY06-1stQtr	FY06-2ndQtr	FY06-3rdQtr	FY06-4thQtr	FY07-1stQtr	FY07-2ndQtr	FY07-3rdQtr	FY07-4thQtr	FY08-1stQtr	FY08-2ndQtr
Reduction	0	0	0	0	0	0	0	0	0	0	0	0
Discharges	0	0	0	1	0	0	0	0	0	0	0	0
Percent	0.0%	0.0%	0.0%	0.0%	0.0%	0.0%	0.0%	0.0%	0.0%	0.0%	0.0%	0.0%

Systemwide	FY05-3rdQtr	FY05-4thQtr	FY06-1stQtr	FY06-2ndQtr	FY06-3rdQtr	FY06-4thQtr	FY07-1stQtr	FY07-2ndQtr	FY07-3rdQtr	FY07-4thQtr	FY08-1stQtr	FY08-2ndQtr
Reduction	0	0	0	0	0	0	0	0	0	0	0	0
Discharges	0	0	0	1	0	0	0	0	0	0	0	0
Percent	0.0%	0.0%	0.0%	0.0%	0.0%	0.0%	0.0%	0.0%	0.0%	0.0%	0.0%	0.0%