

Unemployment-Trend Line

Reduction in Unemployment from Admission to Discharge/Level of Care Change for the last Twelve Quarters
at (640) 12 & 12, INC.

Report Date : 2/5/2008

Data Last Updated on: 02/03/2008

Report Description:

National Outcome Measures (NOMs): <http://www.nationaloutcomemeasures.samhsa.gov/>

Domain: Employment/Education

Outcome: Increased/Retained Employment or Return to/Stay in School

Measure: Change in number of unemployed from admission to discharge/level of care change

The information provided in this report reflects the number of discharges/level of care changes, rather than the number of individuals. For example, if a person is discharged five times during the selected time period, the number of discharges would be five. To be included in this report, at least one service must be reported after admission. Also, when an episode includes more than one service reported under multiple contract sources, the episode will be counted under each contract source, but will only be counted once under the 'All Contract Sources' or 'All Substance Abuse Contract Sources (PPMR)' report.

Please note there are two versions of this report. The versions are different because they either report change from admission to discharge/level of care change (typically for substance abuse programs), or from admission to last transaction (typically for long-term mental health programs).

DEFINITIONS:

Excluded: Individuals are excluded from this measure for one or more of the following reasons:

- Not in Labor Force or employed Full-time or Part-time at admission (only unemployed individuals are included for this measure)
- Dependent or co-dependent (Primary Presenting Problem Codes: 745, 746, 747, 748, 749, 750, 751)
- Discharge type is code 68 (Death)
- Detox is excluded

No change: No change in employment status reported from admission to discharge/level of care change.

Reduction: Individual was employed either full-time or part time at discharge/level of care change.

Admission: Individual begins treatment in a level of care.

Discharge: Individual leaves treatment at that agency.

Level of Care Change: Individual is moving from either detox, residential treatment, halfway house or outpatient to another level of care within an agency.

Systemwide: Represents all ODMHSAS-contracted and operated facilities which have that level of care and contract source.

All Substance Abuse Contract Sources (PPMR): Includes the following contract source codes: 02, 03, 17, 20, 21, 22, 23, 27, 29, 41, 44, 49, 54, 61 and 70. These contract sources are included in the Substance Abuse Provider Performance Management Report.

All Contract Sources: All contract sources which this agency reports.

Notes:

Data for this report are only updated by ODMHSAS staff at intervals. If the "Data Last Updated on:" is more than two weeks past, please contact Mark A. Reynolds at mreynolds@odmhsas.org or (405) 522-3824.

Discharge Codes:	<u>Planned</u>	60 - Completed Treatment	<u>Unplanned</u>	62 - Left ACA/90 Days	<u>Other</u>	63 - Moved
		61 - Completed Court Treatment		66 - Broke Rules		64 - Transferred to another treatment facility
		40 - Level of Care Change		67 - AWOL		65 - Incarcerated
				70 - Discharge Due to Treatment Incompatibility		68 - Death
				92 - No service in 180 Days (auto-discharge)		69 - Failed to begin Treatment

Unemployment-Trend Line

Reduction in Unemployment from Admission to Discharge/Level of Care Change for the last Twelve Quarters

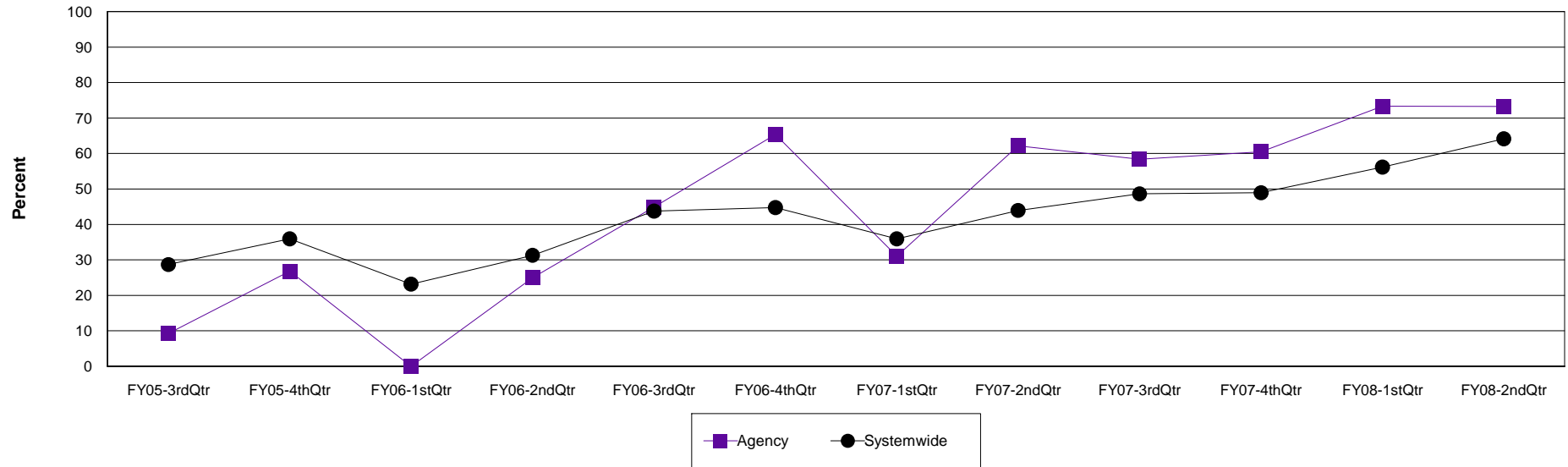
Agency: (640) 12 & 12, INC.

Level of Care: Halfway

Contract Source: All Substance Abuse Contract Sources (PPMR)

Age Group: Adults (18+)

Reduction in Unemployment at 12 & 12, INC.



Agency	FY05-3rdQtr	FY05-4thQtr	FY06-1stQtr	FY06-2ndQtr	FY06-3rdQtr	FY06-4thQtr	FY07-1stQtr	FY07-2ndQtr	FY07-3rdQtr	FY07-4thQtr	FY08-1stQtr	FY08-2ndQtr
Reduction	4	11	0	14	22	17	14	23	21	26	22	41
Discharges	43	41	34	56	49	26	45	37	36	43	30	56
Percent	9.3%	26.8%	0.0%	25.0%	44.9%	65.4%	31.1%	62.2%	58.3%	60.5%	73.3%	73.2%

Systemwide	FY05-3rdQtr	FY05-4thQtr	FY06-1stQtr	FY06-2ndQtr	FY06-3rdQtr	FY06-4thQtr	FY07-1stQtr	FY07-2ndQtr	FY07-3rdQtr	FY07-4thQtr	FY08-1stQtr	FY08-2ndQtr
Reduction	33	41	22	31	49	34	37	40	36	45	41	59
Discharges	115	114	95	99	112	76	103	91	74	92	73	92
Percent	28.7%	36.0%	23.2%	31.3%	43.8%	44.7%	35.9%	44.0%	48.6%	48.9%	56.2%	64.1%

Unemployment-Trend Line

Reduction in Unemployment from Admission to Discharge/Level of Care Change for the last Twelve Quarters

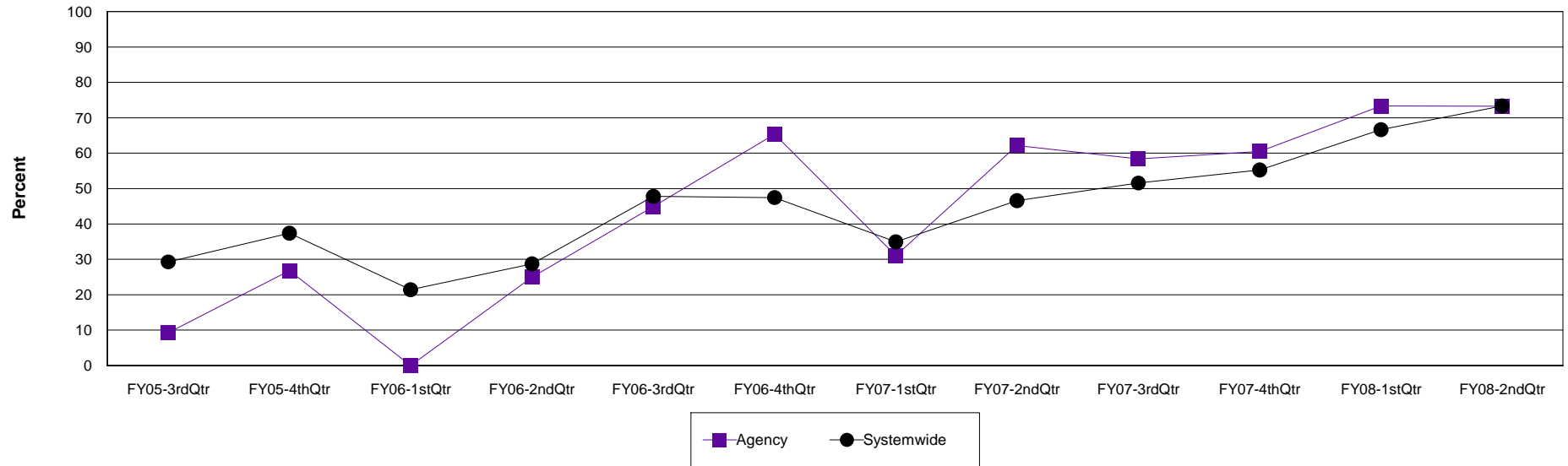
Agency: (640) 12 & 12, INC.

Level of Care: Halfway

Contract Source: All Contract Sources

Age Group: Adults (18+)

Reduction in Unemployment at 12 & 12, INC.



Agency	FY05-3rdQtr	FY05-4thQtr	FY06-1stQtr	FY06-2ndQtr	FY06-3rdQtr	FY06-4thQtr	FY07-1stQtr	FY07-2ndQtr	FY07-3rdQtr	FY07-4thQtr	FY08-1stQtr	FY08-2ndQtr
Reduction	4	11	0	14	22	17	14	23	21	26	22	41
Discharges	43	41	34	56	49	26	45	37	36	43	30	56
Percent	9.3%	26.8%	0.0%	25.0%	44.9%	65.4%	31.1%	62.2%	58.3%	60.5%	73.3%	73.2%

Systemwide	FY05-3rdQtr	FY05-4thQtr	FY06-1stQtr	FY06-2ndQtr	FY06-3rdQtr	FY06-4thQtr	FY07-1stQtr	FY07-2ndQtr	FY07-3rdQtr	FY07-4thQtr	FY08-1stQtr	FY08-2ndQtr
Reduction	29	34	15	25	44	28	29	34	33	42	38	55
Discharges	99	91	70	87	92	59	83	73	64	76	57	75
Percent	29.3%	37.4%	21.4%	28.7%	47.8%	47.5%	34.9%	46.6%	51.6%	55.3%	66.7%	73.3%

Unemployment-Trend Line

Reduction in Unemployment from Admission to Discharge/Level of Care Change for the last Twelve Quarters

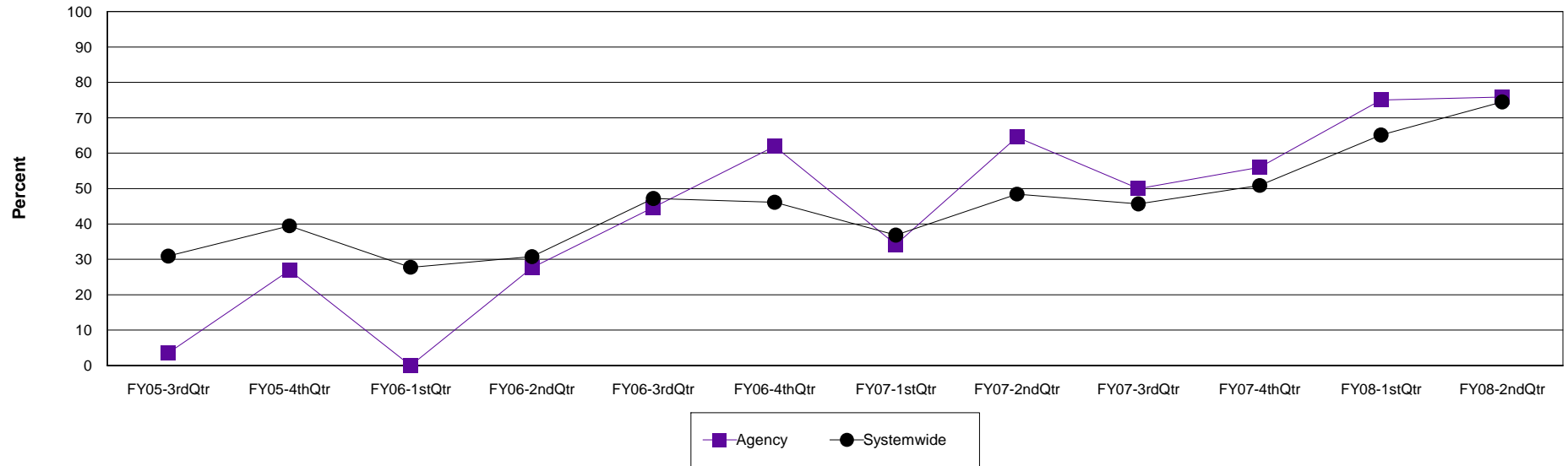
Agency: (640) 12 & 12, INC.

Level of Care: Halfway

Contract Source: (02) ALCOHOL/DRUG

Age Group: Adults (18+)

Reduction in Unemployment at 12 & 12, INC.



Agency	FY05-3rdQtr	FY05-4thQtr	FY06-1stQtr	FY06-2ndQtr	FY06-3rdQtr	FY06-4thQtr	FY07-1stQtr	FY07-2ndQtr	FY07-3rdQtr	FY07-4thQtr	FY08-1stQtr	FY08-2ndQtr
Reduction	1	7	0	13	21	13	13	20	10	14	12	22
Discharges	28	26	18	47	47	21	38	31	20	25	16	29
Percent	3.6%	26.9%	0.0%	27.7%	44.7%	61.9%	34.2%	64.5%	50.0%	56.0%	75.0%	75.9%

Systemwide	FY05-3rdQtr	FY05-4thQtr	FY06-1stQtr	FY06-2ndQtr	FY06-3rdQtr	FY06-4thQtr	FY07-1stQtr	FY07-2ndQtr	FY07-3rdQtr	FY07-4thQtr	FY08-1stQtr	FY08-2ndQtr
Reduction	26	30	15	24	42	24	28	31	21	29	28	35
Discharges	84	76	54	78	89	52	76	64	46	57	43	47
Percent	31.0%	39.5%	27.8%	30.8%	47.2%	46.2%	36.8%	48.4%	45.7%	50.9%	65.1%	74.5%

Unemployment-Trend Line

Reduction in Unemployment from Admission to Discharge/Level of Care Change for the last Twelve Quarters

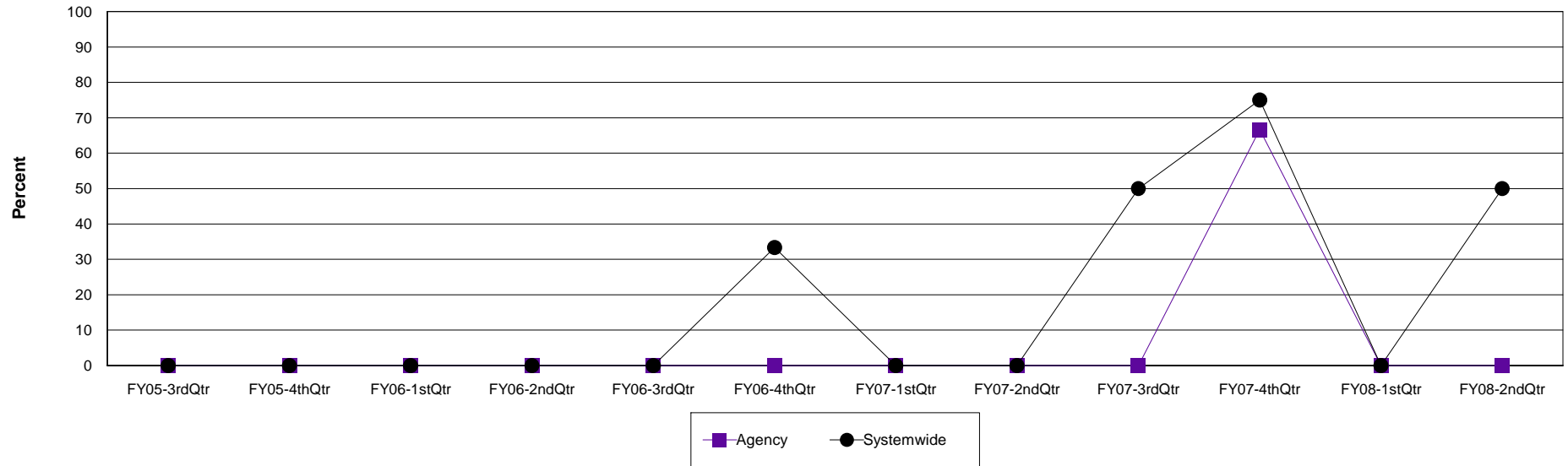
Agency: (640) 12 & 12, INC.

Level of Care: Halfway

Contract Source: (20) DRUG COURT

Age Group: Adults (18+)

Reduction in Unemployment at 12 & 12, INC.



Agency	FY05-3rdQtr	FY05-4thQtr	FY06-1stQtr	FY06-2ndQtr	FY06-3rdQtr	FY06-4thQtr	FY07-1stQtr	FY07-2ndQtr	FY07-3rdQtr	FY07-4thQtr	FY08-1stQtr	FY08-2ndQtr
Reduction	0	0	0	0	0	0	0	0	0	2	0	0
Discharges	0	0	0	1	0	0	0	1	0	3	0	1
Percent	0.0%	0.0%	0.0%	0.0%	0.0%	0.0%	0.0%	0.0%	0.0%	66.7%	0.0%	0.0%

Systemwide	FY05-3rdQtr	FY05-4thQtr	FY06-1stQtr	FY06-2ndQtr	FY06-3rdQtr	FY06-4thQtr	FY07-1stQtr	FY07-2ndQtr	FY07-3rdQtr	FY07-4thQtr	FY08-1stQtr	FY08-2ndQtr
Reduction	0	0	0	0	0	1	0	0	1	3	0	1
Discharges	0	0	0	1	0	3	0	5	2	4	0	2
Percent	0.0%	0.0%	0.0%	0.0%	0.0%	33.3%	0.0%	0.0%	50.0%	75.0%	0.0%	50.0%

Unemployment-Trend Line

Reduction in Unemployment from Admission to Discharge/Level of Care Change for the last Twelve Quarters

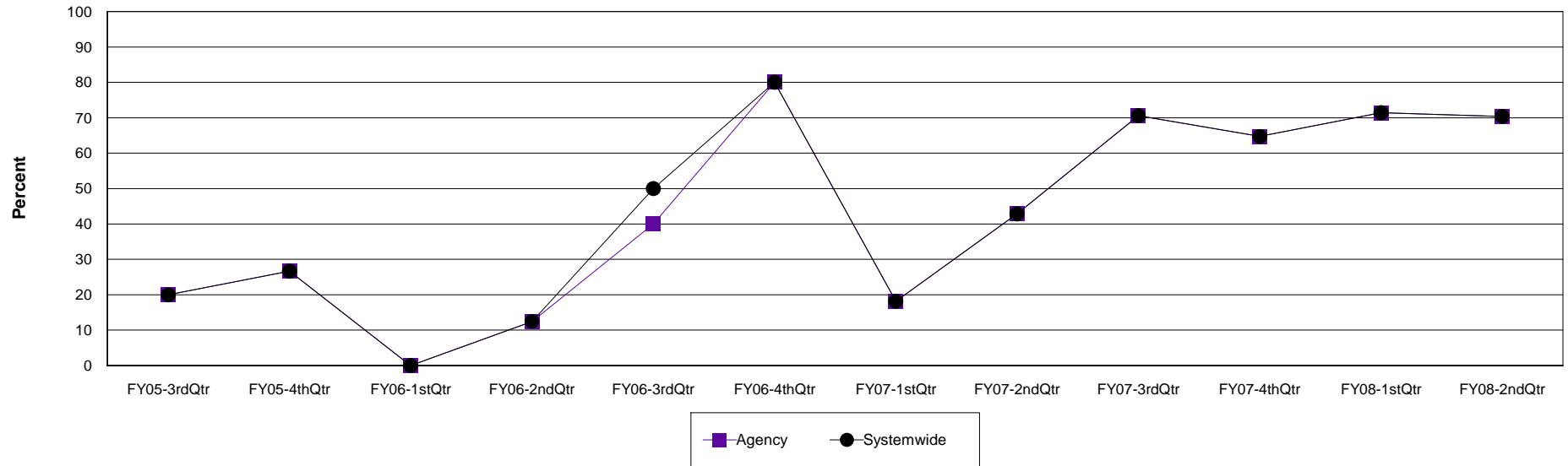
Agency: (640) 12 & 12, INC.

Level of Care: Halfway

Contract Source: (21) ALCOHOL/DRUG SPECIALIZED PROGRAMS

Age Group: Adults (18+)

Reduction in Unemployment at 12 & 12, INC.



Agency	FY05-3rdQtr	FY05-4thQtr	FY06-1stQtr	FY06-2ndQtr	FY06-3rdQtr	FY06-4thQtr	FY07-1stQtr	FY07-2ndQtr	FY07-3rdQtr	FY07-4thQtr	FY08-1stQtr	FY08-2ndQtr
Reduction	3	4	0	1	2	4	2	3	12	11	10	19
Discharges	15	15	16	8	5	5	11	7	17	17	14	27
Percent	20.0%	26.7%	0.0%	12.5%	40.0%	80.0%	18.2%	42.9%	70.6%	64.7%	71.4%	70.4%

Systemwide	FY05-3rdQtr	FY05-4thQtr	FY06-1stQtr	FY06-2ndQtr	FY06-3rdQtr	FY06-4thQtr	FY07-1stQtr	FY07-2ndQtr	FY07-3rdQtr	FY07-4thQtr	FY08-1stQtr	FY08-2ndQtr
Reduction	3	4	0	1	3	4	2	3	12	11	10	19
Discharges	15	15	16	8	6	5	11	7	17	17	14	27
Percent	20.0%	26.7%	0.0%	12.5%	50.0%	80.0%	18.2%	42.9%	70.6%	64.7%	71.4%	70.4%

Unemployment-Trend Line

Reduction in Unemployment from Admission to Discharge/Level of Care Change for the last Twelve Quarters

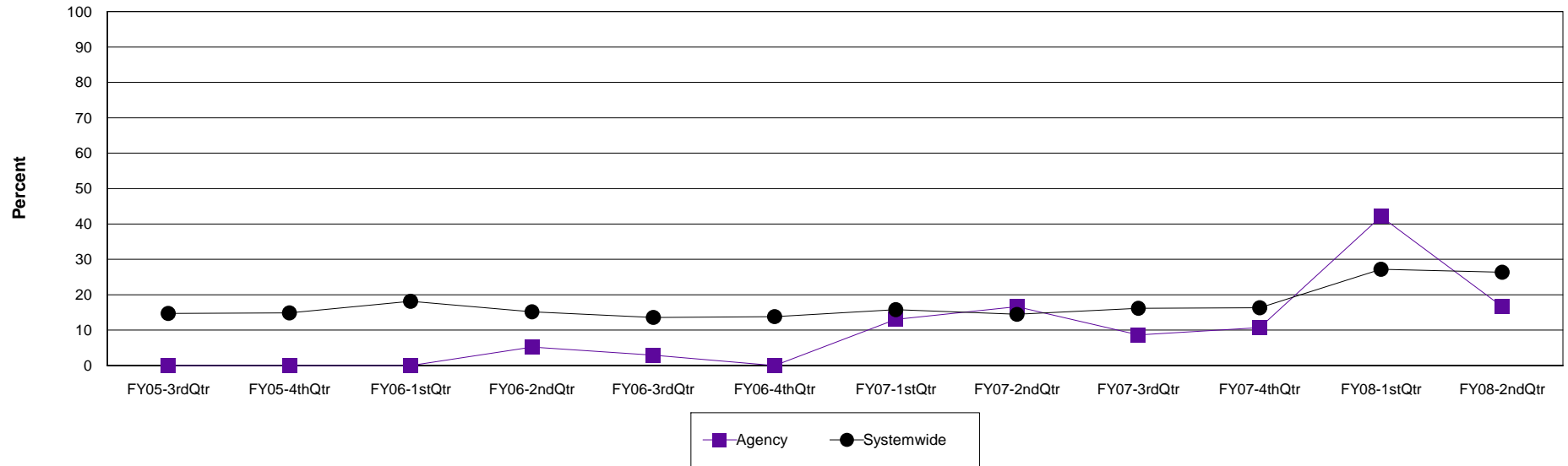
Agency: (640) 12 & 12, INC.

Level of Care: Outpatient

Contract Source: All Substance Abuse Contract Sources (PPMR)

Age Group: Adults (18+)

Reduction in Unemployment at 12 & 12, INC.



Agency	FY05-3rdQtr	FY05-4thQtr	FY06-1stQtr	FY06-2ndQtr	FY06-3rdQtr	FY06-4thQtr	FY07-1stQtr	FY07-2ndQtr	FY07-3rdQtr	FY07-4thQtr	FY08-1stQtr	FY08-2ndQtr
Reduction	0	0	0	1	1	0	6	5	2	3	8	4
Discharges	38	32	50	19	34	45	46	30	23	28	19	24
Percent	0.0%	0.0%	0.0%	5.3%	2.9%	0.0%	13.0%	16.7%	8.7%	10.7%	42.1%	16.7%

Systemwide	FY05-3rdQtr	FY05-4thQtr	FY06-1stQtr	FY06-2ndQtr	FY06-3rdQtr	FY06-4thQtr	FY07-1stQtr	FY07-2ndQtr	FY07-3rdQtr	FY07-4thQtr	FY08-1stQtr	FY08-2ndQtr
Reduction	129	144	155	125	99	105	137	112	148	154	214	141
Discharges	875	967	852	821	726	760	868	773	914	944	786	535
Percent	14.7%	14.9%	18.2%	15.2%	13.6%	13.8%	15.8%	14.5%	16.2%	16.3%	27.2%	26.4%

Unemployment-Trend Line

Reduction in Unemployment from Admission to Discharge/Level of Care Change for the last Twelve Quarters

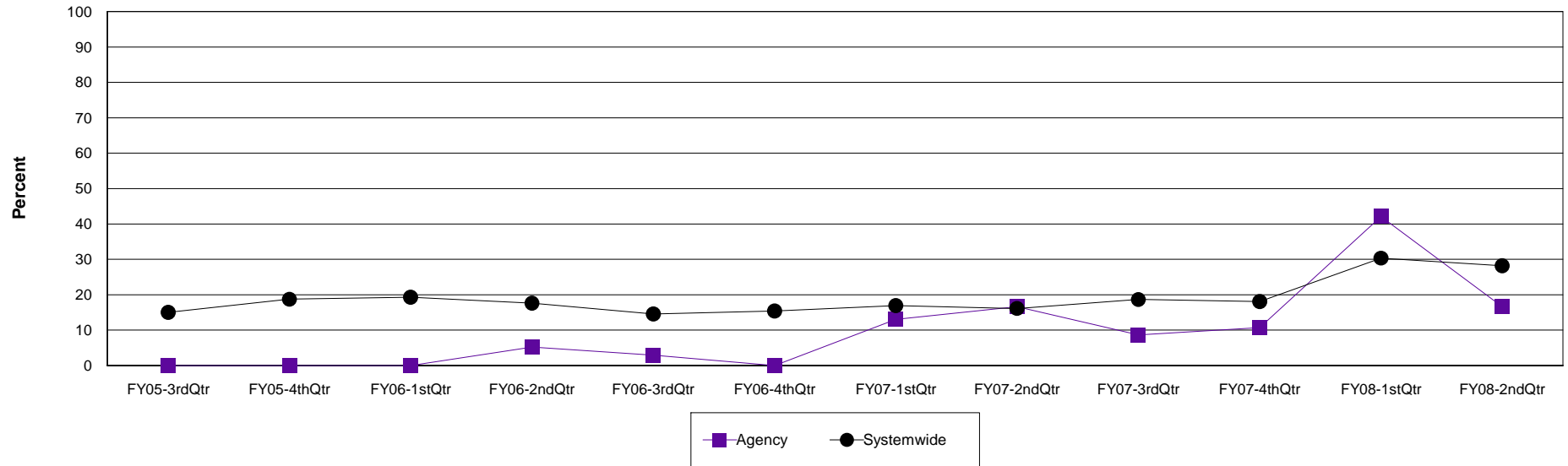
Agency: (640) 12 & 12, INC.

Level of Care: Outpatient

Contract Source: All Contract Sources

Age Group: Adults (18+)

Reduction in Unemployment at 12 & 12, INC.



Agency	FY05-3rdQtr	FY05-4thQtr	FY06-1stQtr	FY06-2ndQtr	FY06-3rdQtr	FY06-4thQtr	FY07-1stQtr	FY07-2ndQtr	FY07-3rdQtr	FY07-4thQtr	FY08-1stQtr	FY08-2ndQtr
Reduction	0	0	0	1	1	0	6	5	2	3	8	4
Discharges	38	32	50	19	34	45	46	30	23	28	19	24
Percent	0.0%	0.0%	0.0%	5.3%	2.9%	0.0%	13.0%	16.7%	8.7%	10.7%	42.1%	16.7%

Systemwide	FY05-3rdQtr	FY05-4thQtr	FY06-1stQtr	FY06-2ndQtr	FY06-3rdQtr	FY06-4thQtr	FY07-1stQtr	FY07-2ndQtr	FY07-3rdQtr	FY07-4thQtr	FY08-1stQtr	FY08-2ndQtr
Reduction	95	116	126	114	83	87	113	94	129	132	187	120
Discharges	631	619	652	647	569	564	666	582	691	730	616	426
Percent	15.1%	18.7%	19.3%	17.6%	14.6%	15.4%	17.0%	16.2%	18.7%	18.1%	30.4%	28.2%

Unemployment-Trend Line

Reduction in Unemployment from Admission to Discharge/Level of Care Change for the last Twelve Quarters

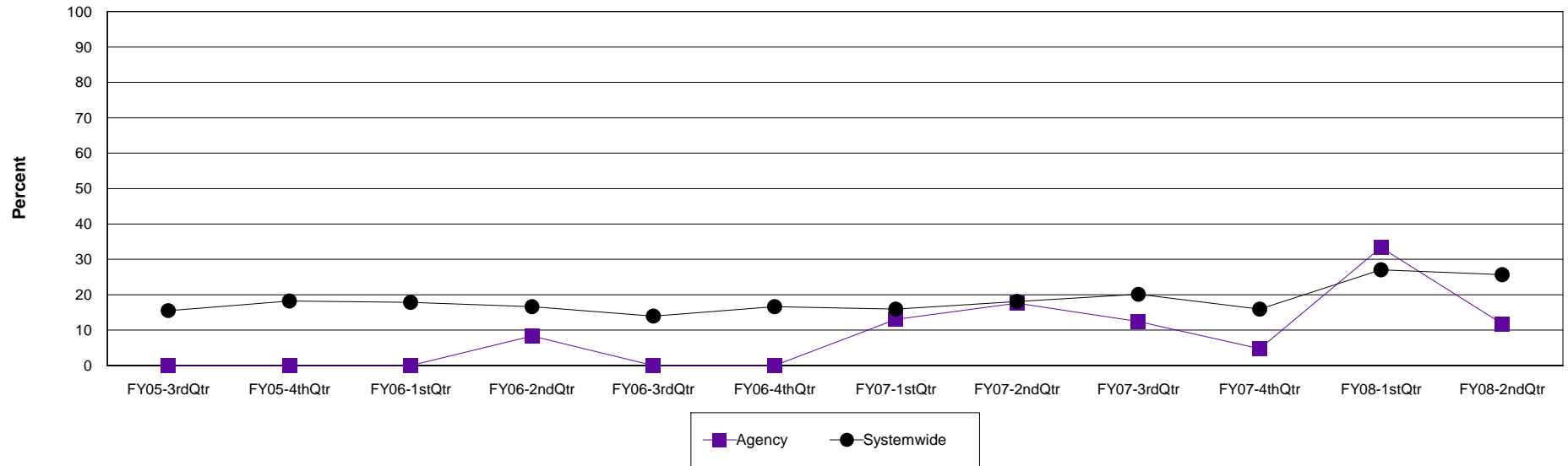
Agency: (640) 12 & 12, INC.

Level of Care: Outpatient

Contract Source: (02) ALCOHOL/DRUG

Age Group: Adults (18+)

Reduction in Unemployment at 12 & 12, INC.



Agency	FY05-3rdQtr	FY05-4thQtr	FY06-1stQtr	FY06-2ndQtr	FY06-3rdQtr	FY06-4thQtr	FY07-1stQtr	FY07-2ndQtr	FY07-3rdQtr	FY07-4thQtr	FY08-1stQtr	FY08-2ndQtr
Reduction	0	0	0	1	0	0	3	3	2	1	4	2
Discharges	29	21	31	12	23	31	23	17	16	21	12	17
Percent	0.0%	0.0%	0.0%	8.3%	0.0%	0.0%	13.0%	17.6%	12.5%	4.8%	33.3%	11.8%

Systemwide	FY05-3rdQtr	FY05-4thQtr	FY06-1stQtr	FY06-2ndQtr	FY06-3rdQtr	FY06-4thQtr	FY07-1stQtr	FY07-2ndQtr	FY07-3rdQtr	FY07-4thQtr	FY08-1stQtr	FY08-2ndQtr
Reduction	69	78	83	73	51	60	62	58	79	66	86	65
Discharges	444	428	464	439	364	361	388	321	392	413	318	253
Percent	15.5%	18.2%	17.9%	16.6%	14.0%	16.6%	16.0%	18.1%	20.2%	16.0%	27.0%	25.7%

Unemployment-Trend Line

Reduction in Unemployment from Admission to Discharge/Level of Care Change for the last Twelve Quarters

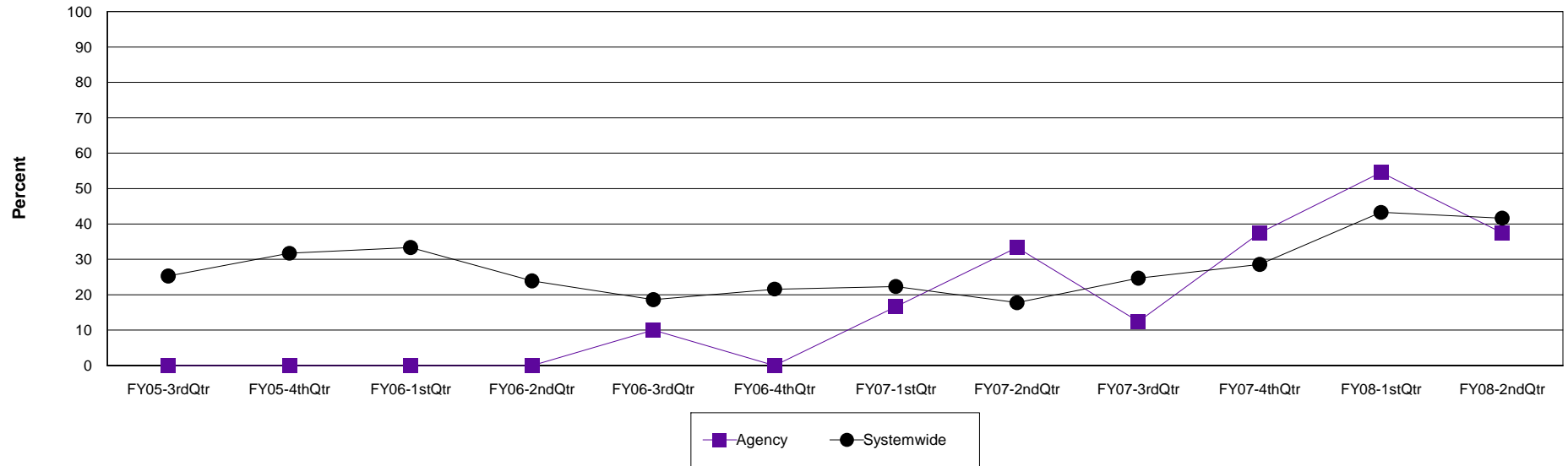
Agency: (640) 12 & 12, INC.

Level of Care: Outpatient

Contract Source: (20) DRUG COURT

Age Group: Adults (18+)

Reduction in Unemployment at 12 & 12, INC.



Agency	FY05-3rdQtr	FY05-4thQtr	FY06-1stQtr	FY06-2ndQtr	FY06-3rdQtr	FY06-4thQtr	FY07-1stQtr	FY07-2ndQtr	FY07-3rdQtr	FY07-4thQtr	FY08-1stQtr	FY08-2ndQtr
Reduction	0	0	0	0	1	0	3	2	1	3	6	3
Discharges	5	7	15	6	10	8	18	6	8	8	11	8
Percent	0.0%	0.0%	0.0%	0.0%	10.0%	0.0%	16.7%	33.3%	12.5%	37.5%	54.5%	37.5%

Systemwide	FY05-3rdQtr	FY05-4thQtr	FY06-1stQtr	FY06-2ndQtr	FY06-3rdQtr	FY06-4thQtr	FY07-1stQtr	FY07-2ndQtr	FY07-3rdQtr	FY07-4thQtr	FY08-1stQtr	FY08-2ndQtr
Reduction	20	33	46	40	30	32	50	30	58	72	103	50
Discharges	79	104	138	167	161	148	224	169	235	252	238	120
Percent	25.3%	31.7%	33.3%	24.0%	18.6%	21.6%	22.3%	17.8%	24.7%	28.6%	43.3%	41.7%

Unemployment-Trend Line

Reduction in Unemployment from Admission to Discharge/Level of Care Change for the last Twelve Quarters

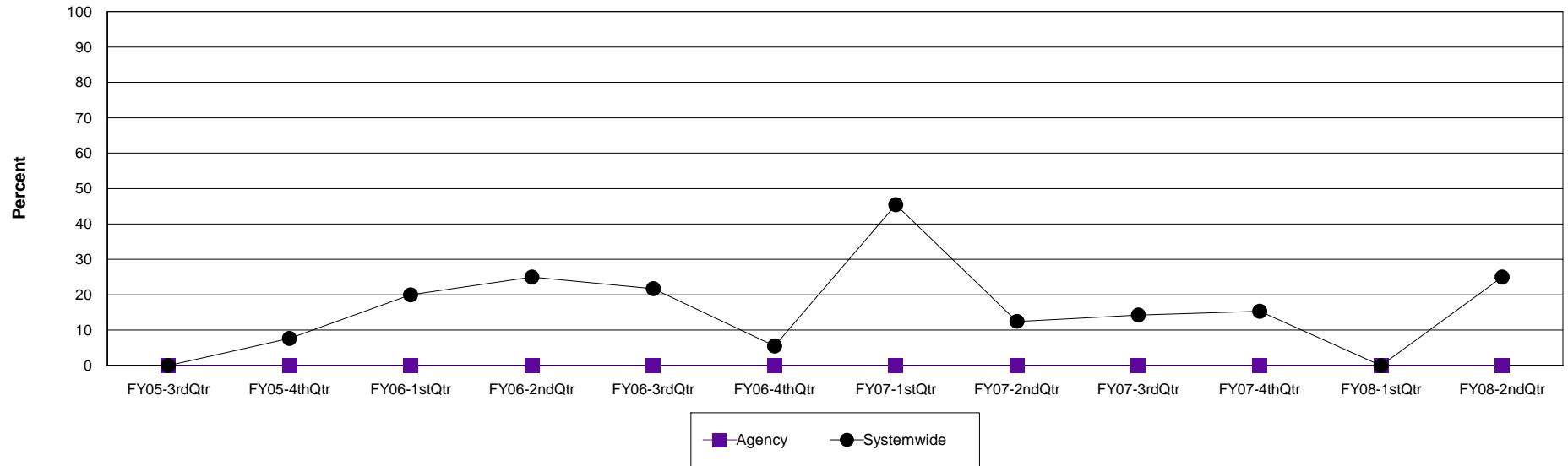
Agency: (640) 12 & 12, INC.

Level of Care: Outpatient

Contract Source: (21) ALCOHOL/DRUG SPECIALIZED PROGRAMS

Age Group: Adults (18+)

Reduction in Unemployment at 12 & 12, INC.



Agency	FY05-3rdQtr	FY05-4thQtr	FY06-1stQtr	FY06-2ndQtr	FY06-3rdQtr	FY06-4thQtr	FY07-1stQtr	FY07-2ndQtr	FY07-3rdQtr	FY07-4thQtr	FY08-1stQtr	FY08-2ndQtr
Reduction	0	0	0	0	0	0	0	0	0	0	0	0
Discharges	0	0	0	0	1	0	0	0	0	0	0	1
Percent	0.0%	0.0%	0.0%	0.0%	0.0%	0.0%	0.0%	0.0%	0.0%	0.0%	0.0%	0.0%

Systemwide	FY05-3rdQtr	FY05-4thQtr	FY06-1stQtr	FY06-2ndQtr	FY06-3rdQtr	FY06-4thQtr	FY07-1stQtr	FY07-2ndQtr	FY07-3rdQtr	FY07-4thQtr	FY08-1stQtr	FY08-2ndQtr
Reduction	0	1	3	5	5	1	5	3	2	2	0	1
Discharges	4	13	15	20	23	18	11	24	14	13	6	4
Percent	0.0%	7.7%	20.0%	25.0%	21.7%	5.6%	45.5%	12.5%	14.3%	15.4%	0.0%	25.0%

Unemployment-Trend Line

Reduction in Unemployment from Admission to Discharge/Level of Care Change for the last Twelve Quarters

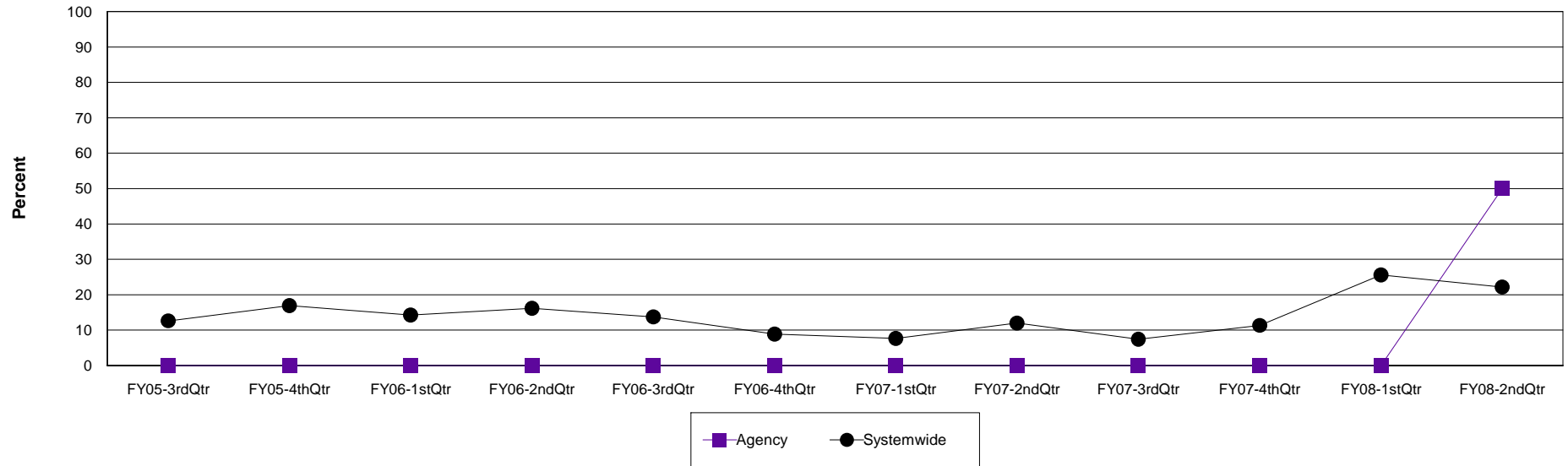
Agency: (640) 12 & 12, INC.

Level of Care: Outpatient

Contract Source: (29) PROBATION AND PAROLE

Age Group: Adults (18+)

Reduction in Unemployment at 12 & 12, INC.



Agency	FY05-3rdQtr	FY05-4thQtr	FY06-1stQtr	FY06-2ndQtr	FY06-3rdQtr	FY06-4thQtr	FY07-1stQtr	FY07-2ndQtr	FY07-3rdQtr	FY07-4thQtr	FY08-1stQtr	FY08-2ndQtr
Reduction	0	0	0	0	0	0	0	0	0	0	0	1
Discharges	6	7	8	2	3	9	5	7	1	1	0	2
Percent	0.0%	0.0%	0.0%	0.0%	0.0%	0.0%	0.0%	0.0%	0.0%	0.0%	0.0%	50.0%

Systemwide	FY05-3rdQtr	FY05-4thQtr	FY06-1stQtr	FY06-2ndQtr	FY06-3rdQtr	FY06-4thQtr	FY07-1stQtr	FY07-2ndQtr	FY07-3rdQtr	FY07-4thQtr	FY08-1stQtr	FY08-2ndQtr
Reduction	20	22	14	18	11	8	8	13	8	15	32	18
Discharges	158	130	98	111	80	90	104	108	107	132	125	81
Percent	12.7%	16.9%	14.3%	16.2%	13.8%	8.9%	7.7%	12.0%	7.5%	11.4%	25.6%	22.2%

Unemployment-Trend Line

Reduction in Unemployment from Admission to Discharge/Level of Care Change for the last Twelve Quarters

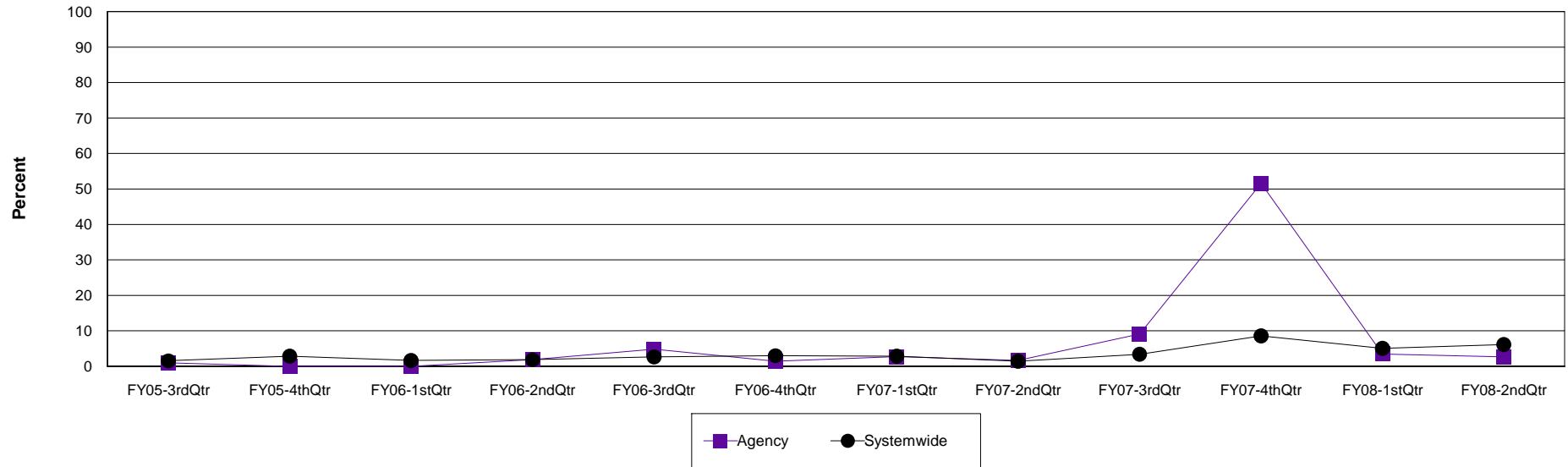
Agency: (640) 12 & 12, INC.

Level of Care: Residential Treatment

Contract Source: All Substance Abuse Contract Sources (PPMR)

Age Group: Adults (18+)

Reduction in Unemployment at 12 & 12, INC.



Agency	FY05-3rdQtr	FY05-4thQtr	FY06-1stQtr	FY06-2ndQtr	FY06-3rdQtr	FY06-4thQtr	FY07-1stQtr	FY07-2ndQtr	FY07-3rdQtr	FY07-4thQtr	FY08-1stQtr	FY08-2ndQtr
Reduction	1	0	0	2	4	1	2	1	6	48	3	3
Discharges	98	98	112	105	82	69	73	59	66	93	86	111
Percent	1.0%	0.0%	0.0%	1.9%	4.9%	1.4%	2.7%	1.7%	9.1%	51.6%	3.5%	2.7%

Systemwide	FY05-3rdQtr	FY05-4thQtr	FY06-1stQtr	FY06-2ndQtr	FY06-3rdQtr	FY06-4thQtr	FY07-1stQtr	FY07-2ndQtr	FY07-3rdQtr	FY07-4thQtr	FY08-1stQtr	FY08-2ndQtr
Reduction	10	20	11	13	18	19	19	9	21	62	35	42
Discharges	638	698	662	694	669	630	659	614	615	722	690	681
Percent	1.6%	2.9%	1.7%	1.9%	2.7%	3.0%	2.9%	1.5%	3.4%	8.6%	5.1%	6.2%

Unemployment-Trend Line

Reduction in Unemployment from Admission to Discharge/Level of Care Change for the last Twelve Quarters

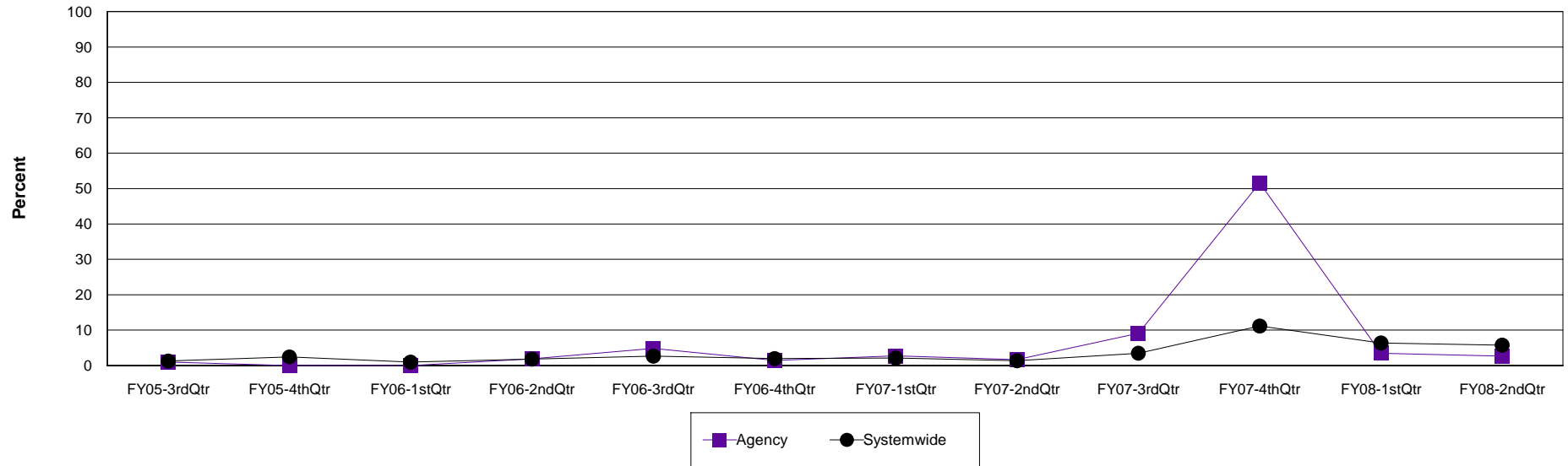
Agency: (640) 12 & 12, INC.

Level of Care: Residential Treatment

Contract Source: All Contract Sources

Age Group: Adults (18+)

Reduction in Unemployment at 12 & 12, INC.



Agency	FY05-3rdQtr	FY05-4thQtr	FY06-1stQtr	FY06-2ndQtr	FY06-3rdQtr	FY06-4thQtr	FY07-1stQtr	FY07-2ndQtr	FY07-3rdQtr	FY07-4thQtr	FY08-1stQtr	FY08-2ndQtr
Reduction	1	0	0	2	4	1	2	1	6	48	3	3
Discharges	98	98	112	105	82	69	73	59	66	93	86	111
Percent	1.0%	0.0%	0.0%	1.9%	4.9%	1.4%	2.7%	1.7%	9.1%	51.6%	3.5%	2.7%

Systemwide	FY05-3rdQtr	FY05-4thQtr	FY06-1stQtr	FY06-2ndQtr	FY06-3rdQtr	FY06-4thQtr	FY07-1stQtr	FY07-2ndQtr	FY07-3rdQtr	FY07-4thQtr	FY08-1stQtr	FY08-2ndQtr
Reduction	7	14	5	10	13	9	11	6	16	59	34	34
Discharges	530	565	506	554	490	455	510	442	453	527	533	591
Percent	1.3%	2.5%	1.0%	1.8%	2.7%	2.0%	2.2%	1.4%	3.5%	11.2%	6.4%	5.8%

Unemployment-Trend Line

Reduction in Unemployment from Admission to Discharge/Level of Care Change for the last Twelve Quarters

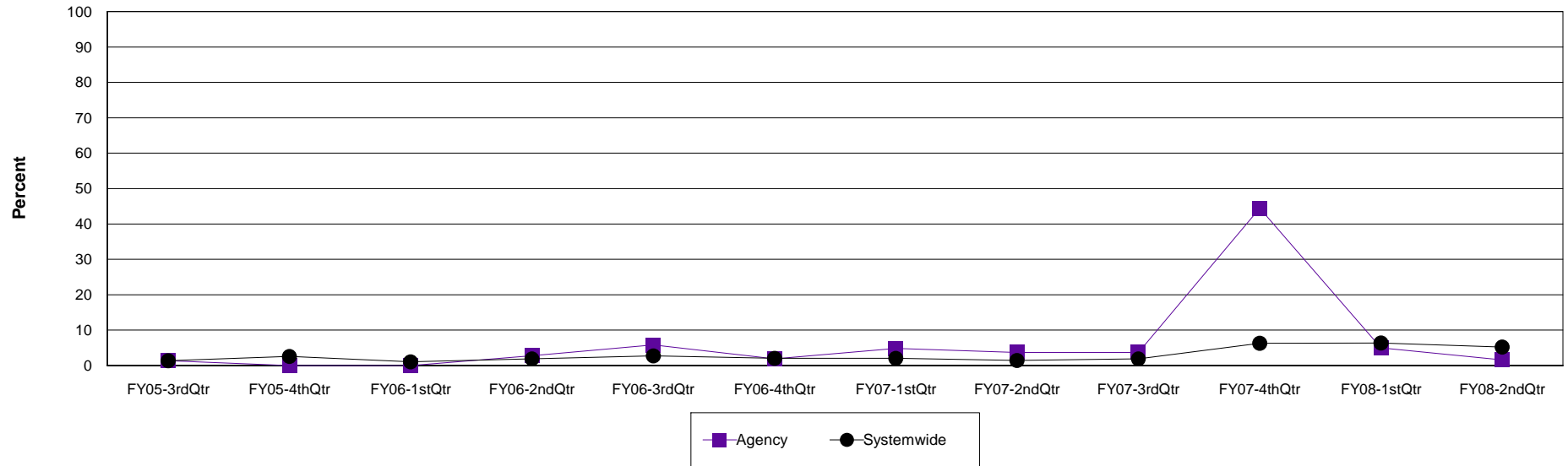
Agency: (640) 12 & 12, INC.

Level of Care: Residential Treatment

Contract Source: (02) ALCOHOL/DRUG

Age Group: Adults (18+)

Reduction in Unemployment at 12 & 12, INC.



Agency	FY05-3rdQtr	FY05-4thQtr	FY06-1stQtr	FY06-2ndQtr	FY06-3rdQtr	FY06-4thQtr	FY07-1stQtr	FY07-2ndQtr	FY07-3rdQtr	FY07-4thQtr	FY08-1stQtr	FY08-2ndQtr
Reduction	1	0	0	2	4	1	2	1	1	20	2	1
Discharges	72	78	82	71	68	52	41	27	27	45	40	61
Percent	1.4%	0.0%	0.0%	2.8%	5.9%	1.9%	4.9%	3.7%	3.7%	44.4%	5.0%	1.6%

Systemwide	FY05-3rdQtr	FY05-4thQtr	FY06-1stQtr	FY06-2ndQtr	FY06-3rdQtr	FY06-4thQtr	FY07-1stQtr	FY07-2ndQtr	FY07-3rdQtr	FY07-4thQtr	FY08-1stQtr	FY08-2ndQtr
Reduction	7	14	5	10	13	9	9	5	7	27	30	27
Discharges	504	545	476	519	475	437	438	349	363	428	469	517
Percent	1.4%	2.6%	1.1%	1.9%	2.7%	2.1%	2.1%	1.4%	1.9%	6.3%	6.4%	5.2%

Unemployment-Trend Line

Reduction in Unemployment from Admission to Discharge/Level of Care Change for the last Twelve Quarters

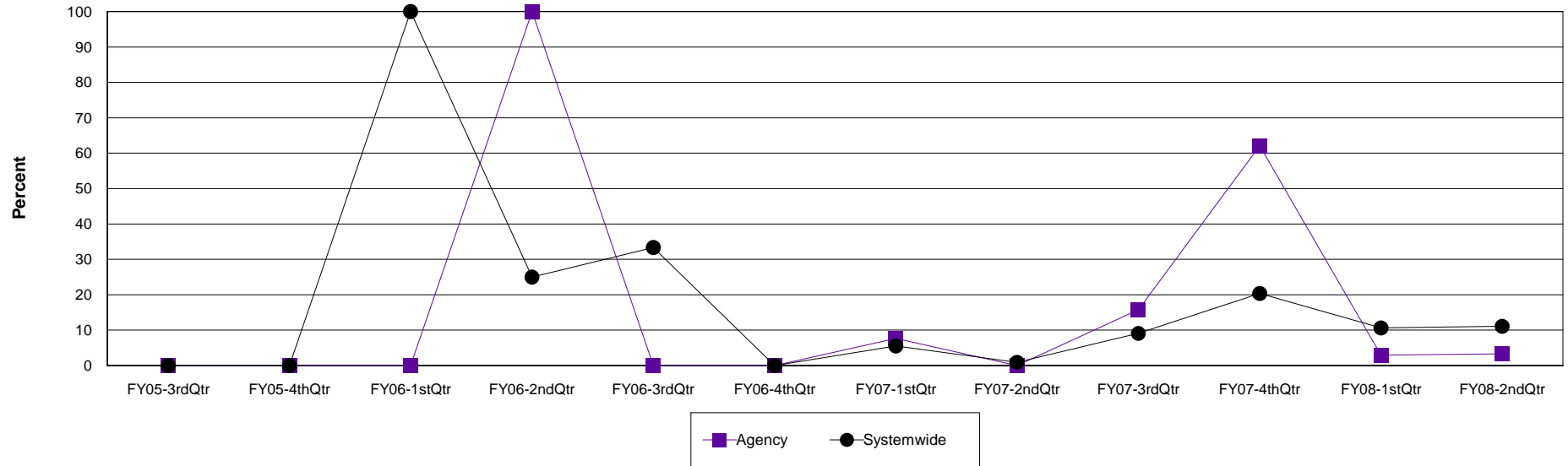
Agency: (640) 12 & 12, INC.

Level of Care: Residential Treatment

Contract Source: (20) DRUG COURT

Age Group: Adults (18+)

Reduction in Unemployment at 12 & 12, INC.



Agency	FY05-3rdQtr	FY05-4thQtr	FY06-1stQtr	FY06-2ndQtr	FY06-3rdQtr	FY06-4thQtr	FY07-1stQtr	FY07-2ndQtr	FY07-3rdQtr	FY07-4thQtr	FY08-1stQtr	FY08-2ndQtr
Reduction	0	0	0	1	0	0	1	0	3	18	1	1
Discharges	0	0	0	1	0	0	13	18	19	29	34	30
Percent	0.0%	0.0%	0.0%	100.0%	0.0%	0.0%	7.7%	0.0%	15.8%	62.1%	2.9%	3.3%

Systemwide	FY05-3rdQtr	FY05-4thQtr	FY06-1stQtr	FY06-2ndQtr	FY06-3rdQtr	FY06-4thQtr	FY07-1stQtr	FY07-2ndQtr	FY07-3rdQtr	FY07-4thQtr	FY08-1stQtr	FY08-2ndQtr
Reduction	0	0	1	1	1	0	5	1	8	23	8	8
Discharges	0	1	1	4	3	1	90	105	88	113	75	72
Percent	0.0%	0.0%	100.0%	25.0%	33.3%	0.0%	5.6%	1.0%	9.1%	20.4%	10.7%	11.1%

Unemployment-Trend Line

Reduction in Unemployment from Admission to Discharge/Level of Care Change for the last Twelve Quarters

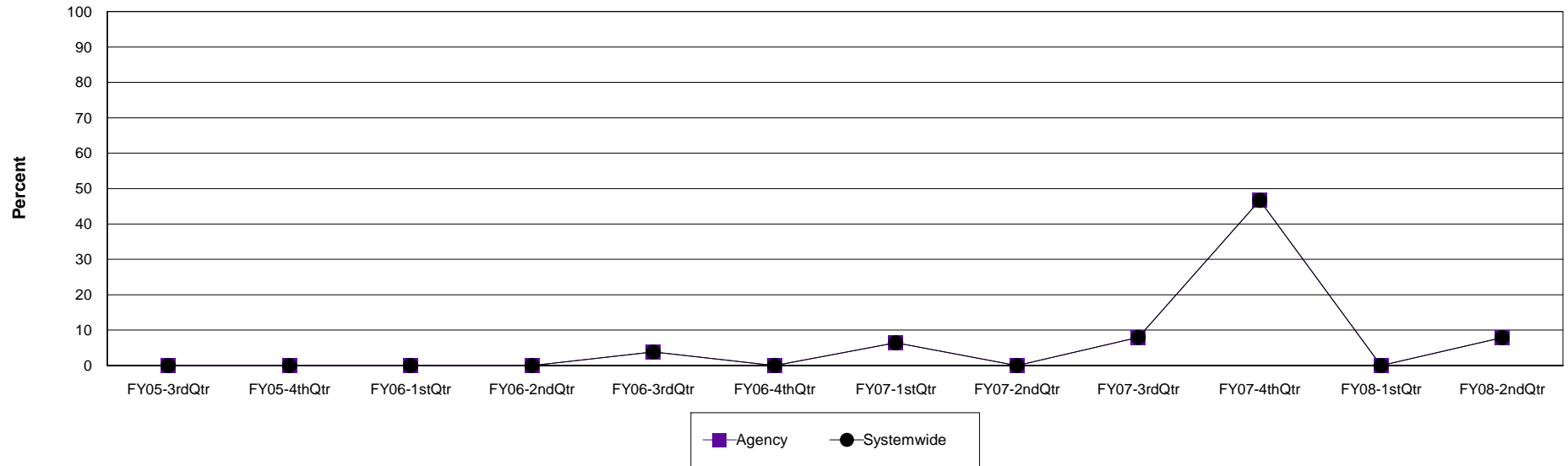
Agency: (640) 12 & 12, INC.

Level of Care: Residential Treatment

Contract Source: (21) ALCOHOL/DRUG SPECIALIZED PROGRAMS

Age Group: Adults (18+)

Reduction in Unemployment at 12 & 12, INC.



Agency	FY05-3rdQtr	FY05-4thQtr	FY06-1stQtr	FY06-2ndQtr	FY06-3rdQtr	FY06-4thQtr	FY07-1stQtr	FY07-2ndQtr	FY07-3rdQtr	FY07-4thQtr	FY08-1stQtr	FY08-2ndQtr
Reduction	0	0	0	0	1	0	2	0	2	14	0	3
Discharges	28	30	42	48	26	28	31	16	25	30	35	38
Percent	0.0%	0.0%	0.0%	0.0%	3.8%	0.0%	6.5%	0.0%	8.0%	46.7%	0.0%	7.9%

Systemwide	FY05-3rdQtr	FY05-4thQtr	FY06-1stQtr	FY06-2ndQtr	FY06-3rdQtr	FY06-4thQtr	FY07-1stQtr	FY07-2ndQtr	FY07-3rdQtr	FY07-4thQtr	FY08-1stQtr	FY08-2ndQtr
Reduction	0	0	0	0	1	0	2	0	2	14	0	3
Discharges	28	30	42	48	26	28	31	16	25	30	35	38
Percent	0.0%	0.0%	0.0%	0.0%	3.8%	0.0%	6.5%	0.0%	8.0%	46.7%	0.0%	7.9%