

Level of Functioning-Pie Chart (5 Point Change)

Increased Level of Functioning (5 Pt.) from Admission to Discharge/Level of Care Change
Between 01/01/2007 and 12/31/2007 at (640) 12 & 12, INC.

Printed Date: 2/5/2008

Data Last Updated on: 02/03/2008

Report Description:

National Outcome Measures (NOMs): <http://www.nationaloutcomemeasures.samhsa.gov/>

Domain: Reduced Morbidity

Outcome: Decreased Symptomatology

Measure: Change in level of functioning, based on the Global Assessment of Functioning (GAF), from admission to discharge/level of care change

The information provided in this report reflects the number of discharges/level of care changes, rather than the number of individuals. For example, if a person is discharged five times during the selected time period, the number of discharges would be five. To be included in this report, at least one service must be reported after admission. Also, when an episode includes more than one service reported under multiple contract sources, the episode will be counted under each contract source, but will only be counted once under the 'All Contract Sources' or 'All Substance Abuse Contract Sources (PPMR)' report.

DEFINITIONS:

Excluded: Individuals are excluded from this measure for one or more of the following reasons:

- Dependent or co-dependent(Primary Presenting Problem Codes: 745, 746, 747, 748, 749, 750, 751)
- Discharge type is code 68 (Death)

Decrease: GAF score is at least five points lower at discharge/level of care change than at admission.

No change: No change in GAF score reported from admission to discharge/level of care change.

Increase: GAF score is at least five points higher at discharge/level of care change than at admission.

Admission: Individual begins treatment in a level of care.

Discharge: Individual leaves treatment at that agency.

Level of Care Change: Individual is moving from either detox, residential treatment, halfway house or outpatient to another level of care within an agency.

Systemwide: Represents all ODMHSAS-contracted and operated facilities which have that level of care and contract source.

All Substance Abuse Contract Sources (PPMR): Includes the following contract source codes: 02, 03, 17, 20, 21, 22, 23, 27, 29, 41, 44, 49, 54, 61 and 70. These contract sources are included in the Substance Abuse Provider Performance Management Report.

All Contract Sources: All contract sources which this agency reports.

Notes:

Data for this report are only updated by ODMHSAS staff at intervals. If the "Data Last Updated on:" is more than two weeks past, please contact Mark A. Reynolds at mreynolds@odmhsas.org or (405) 522-3824.

Discharge Codes:	Planned	Unplanned	Other
	60 - Completed Treatment	62 - Left ACA/90 Days	63 - Moved
	61 - Completed Court Treatment	66 - Broke Rules	64 - Transferred to another treatment facility
	40 - Level of Care Change	67 - AWOL	65 - Incarcerated
		70 - Discharge Due to Treatment Incompatibility	68 - Death
		92 - No service in 180 Days (auto-discharge)	69 - Failed to begin Treatment

Level of Functioning-Pie Chart (5 Point Change)

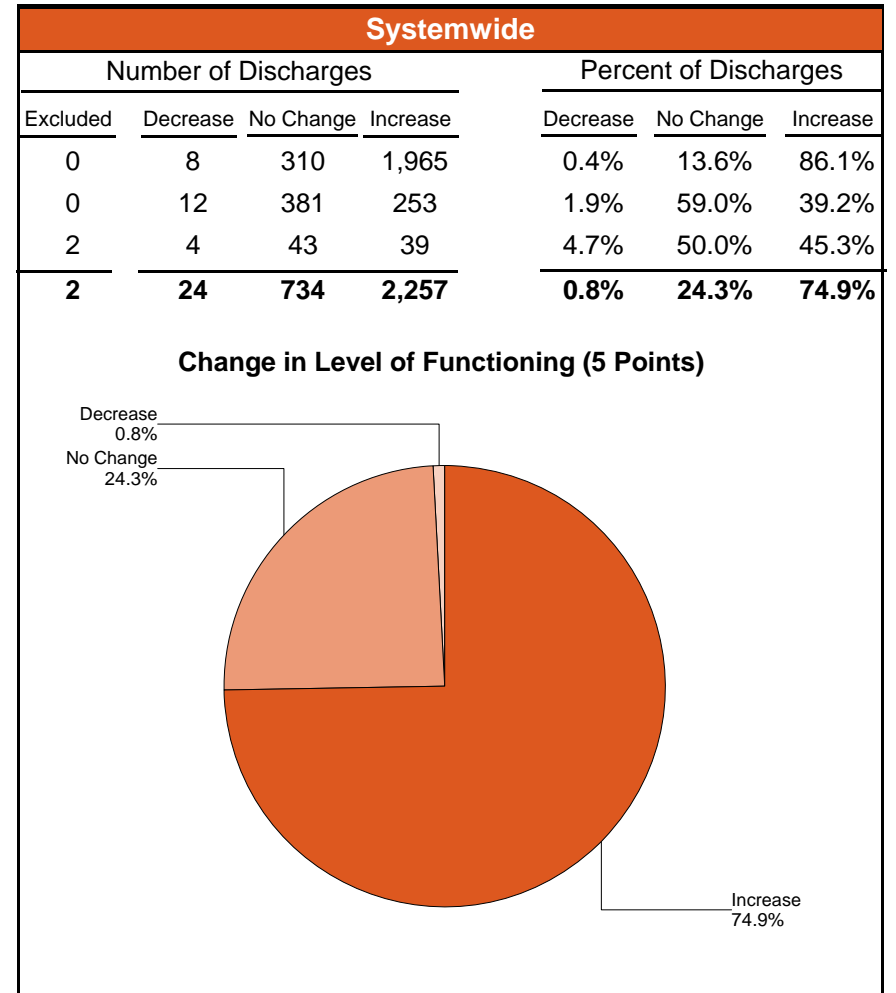
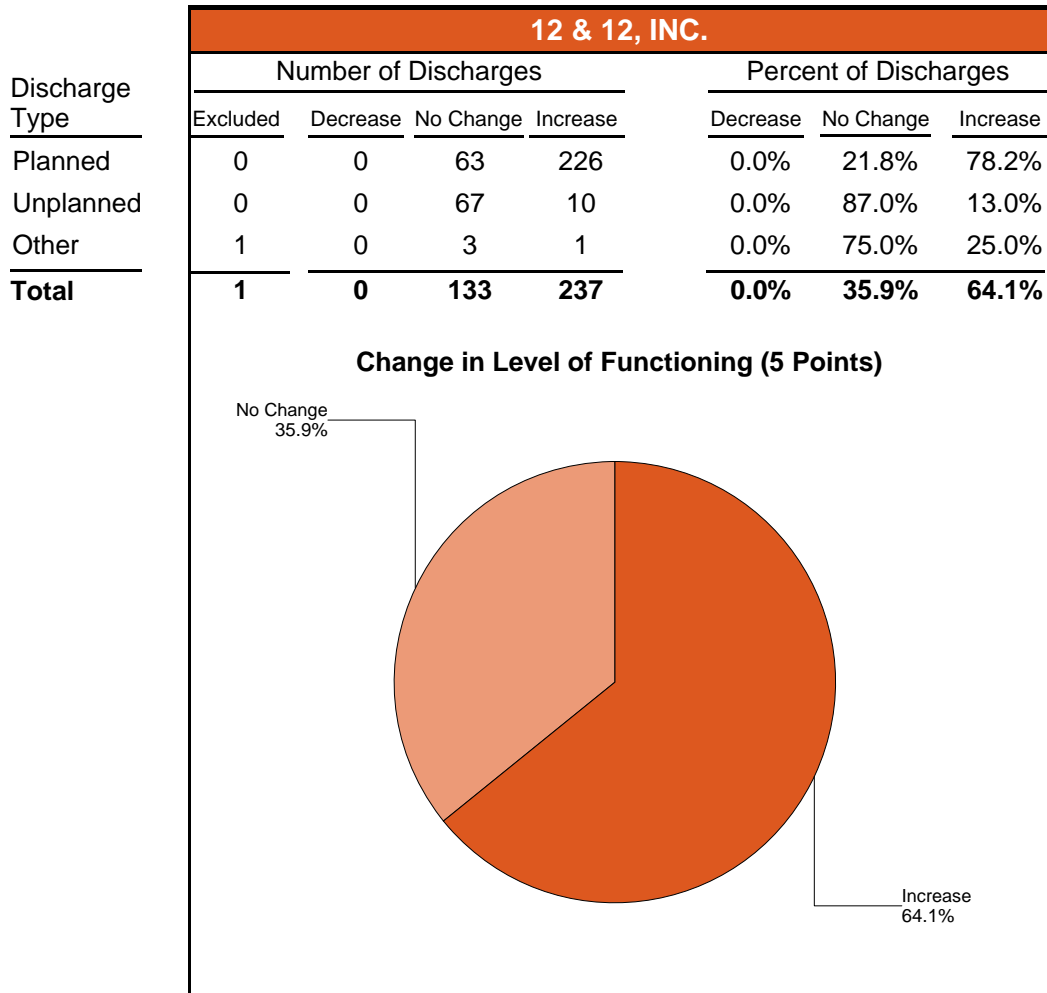
Increased Level of Functioning (5 Pt.) from Admission to Discharge/Level of Care Change Between 01/01/2007 and 12/31/2007

Agency: (640) 12 & 12, INC.

Level of Care: Detox

Contract Source: All Substance Abuse Contract Sources (PPMR)

Age Group: Adults (18+)



Level of Functioning-Pie Chart (5 Point Change)

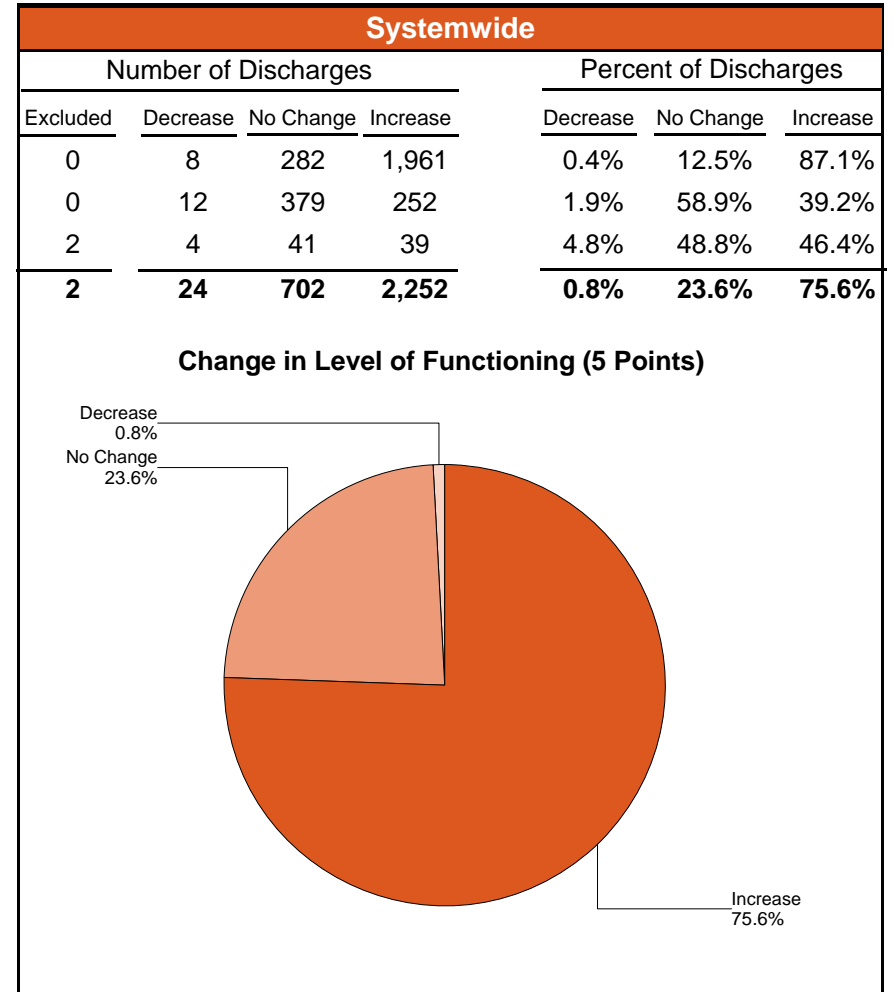
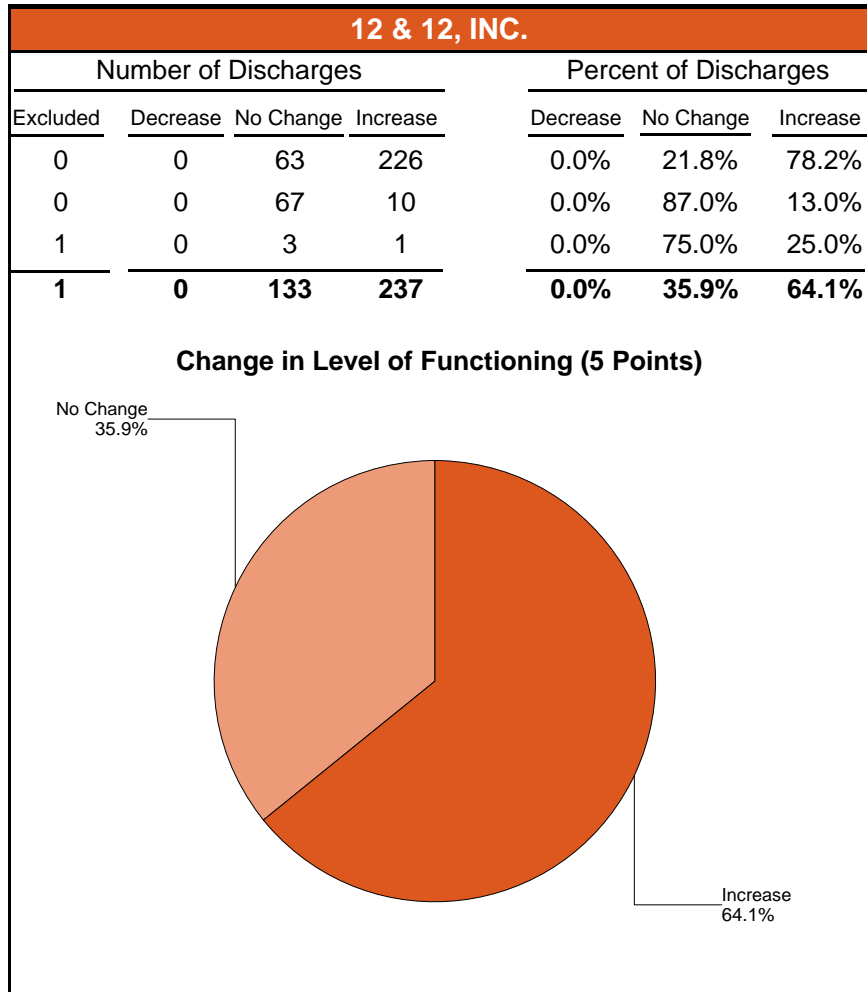
Increased Level of Functioning (5 Pt.) from Admission to Discharge/Level of Care Change Between 01/01/2007 and 12/31/2007

Agency: (640) 12 & 12, INC.

Level of Care: Detox

Contract Source: All Contract Sources

Age Group: Adults (18+)



Level of Functioning-Pie Chart (5 Point Change)

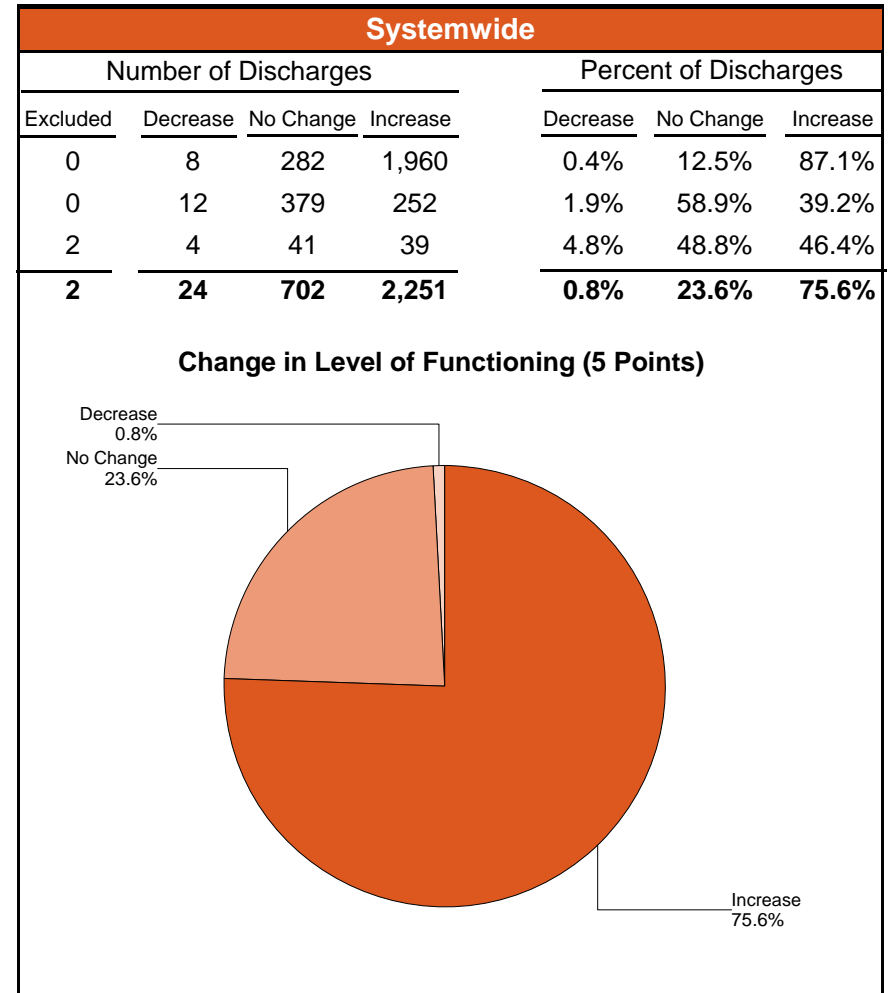
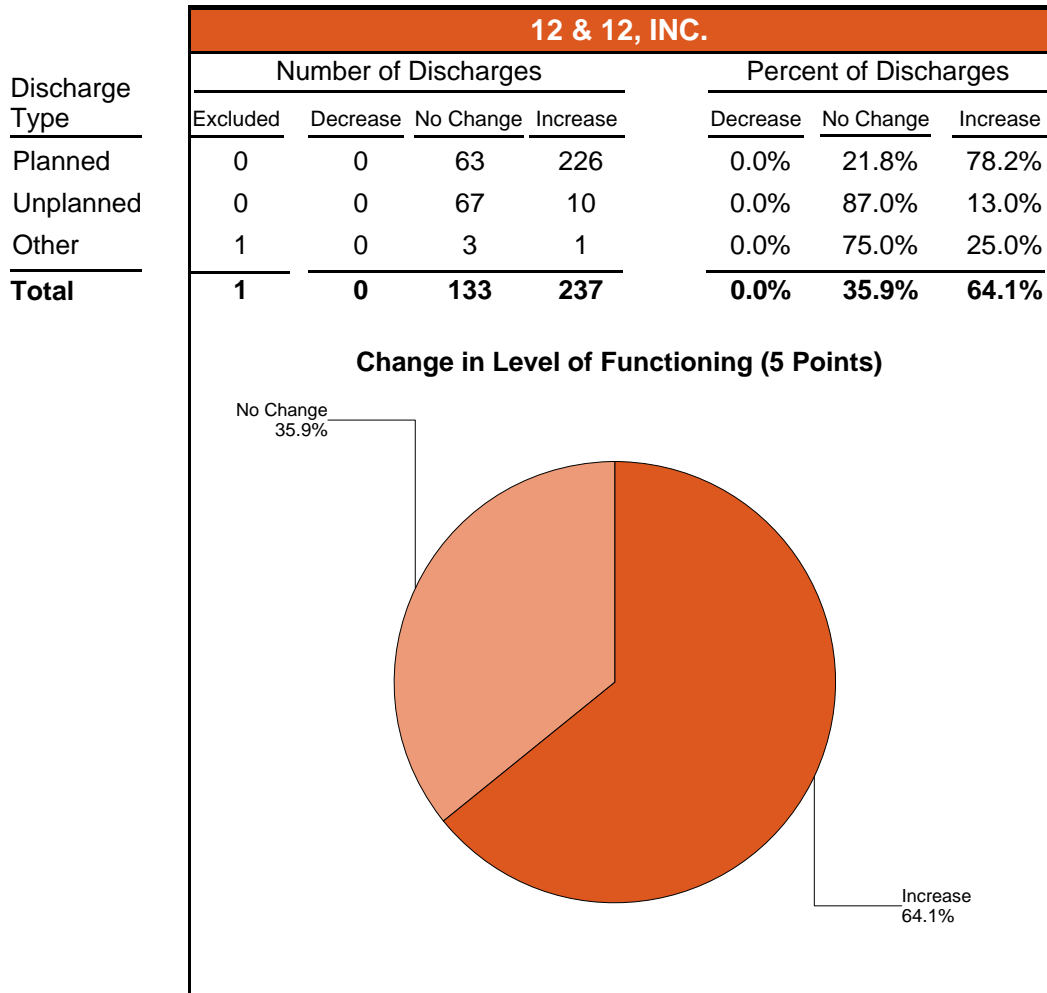
Increased Level of Functioning (5 Pt.) from Admission to Discharge/Level of Care Change Between 01/01/2007 and 12/31/2007

Agency: (640) 12 & 12, INC.

Level of Care: Detox

Contract Source: (02) ALCOHOL/DRUG

Age Group: Adults (18+)



Level of Functioning-Pie Chart (5 Point Change)

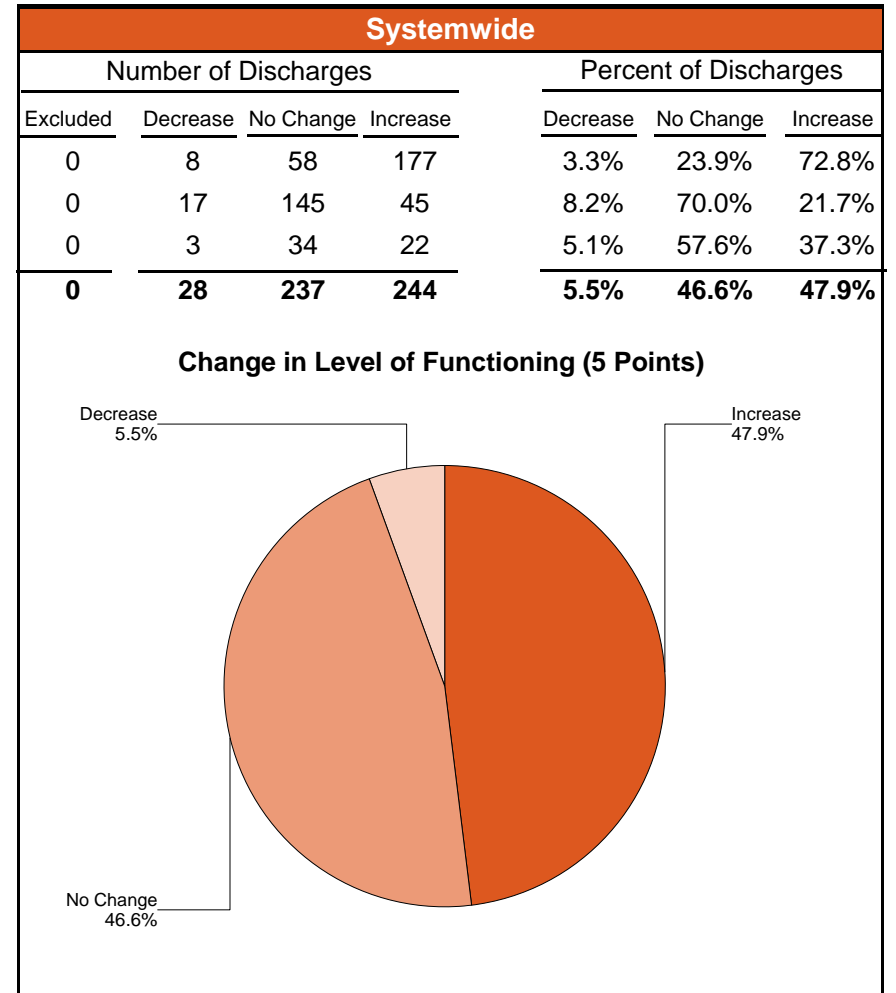
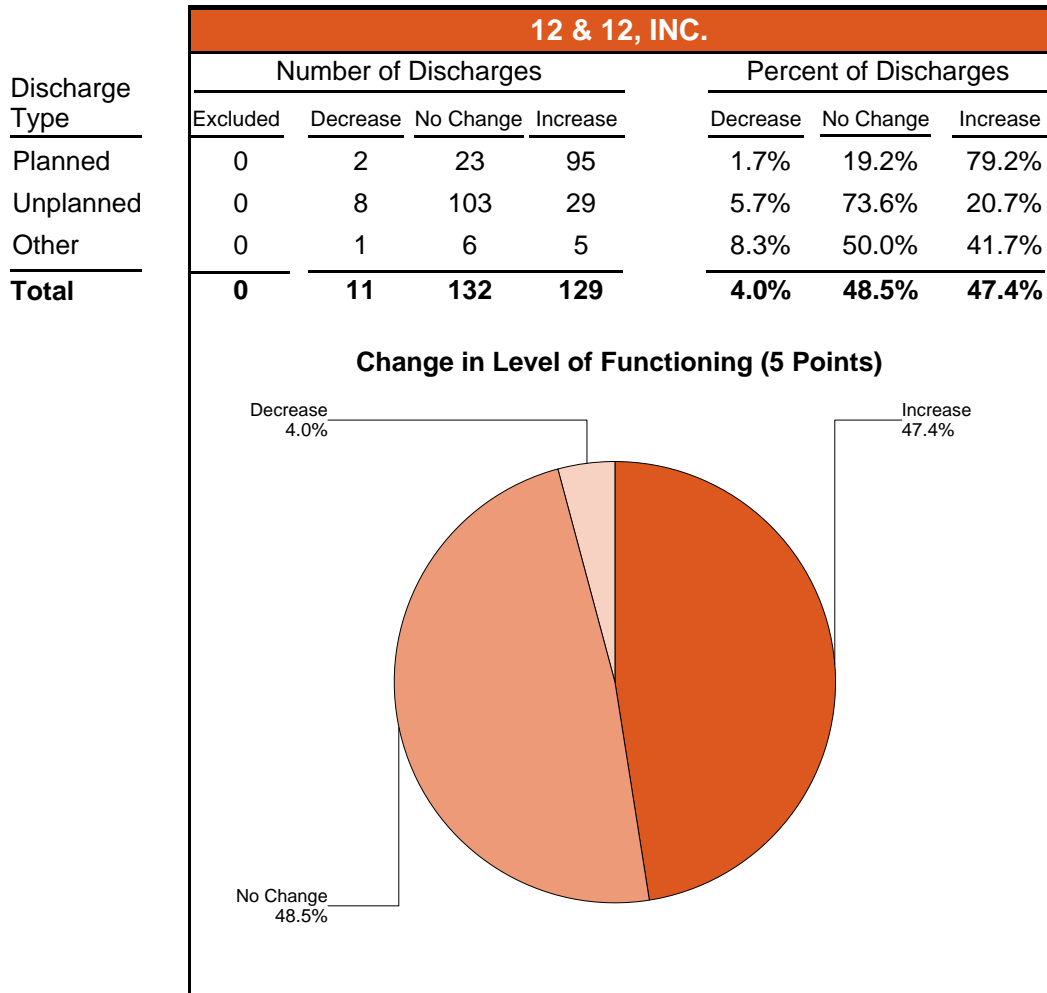
Increased Level of Functioning (5 Pt.) from Admission to Discharge/Level of Care Change Between 01/01/2007 and 12/31/2007

Agency: (640) 12 & 12, INC.

Level of Care: Halfway

Contract Source: All Substance Abuse Contract Sources (PPMR)

Age Group: Adults (18+)



Level of Functioning-Pie Chart (5 Point Change)

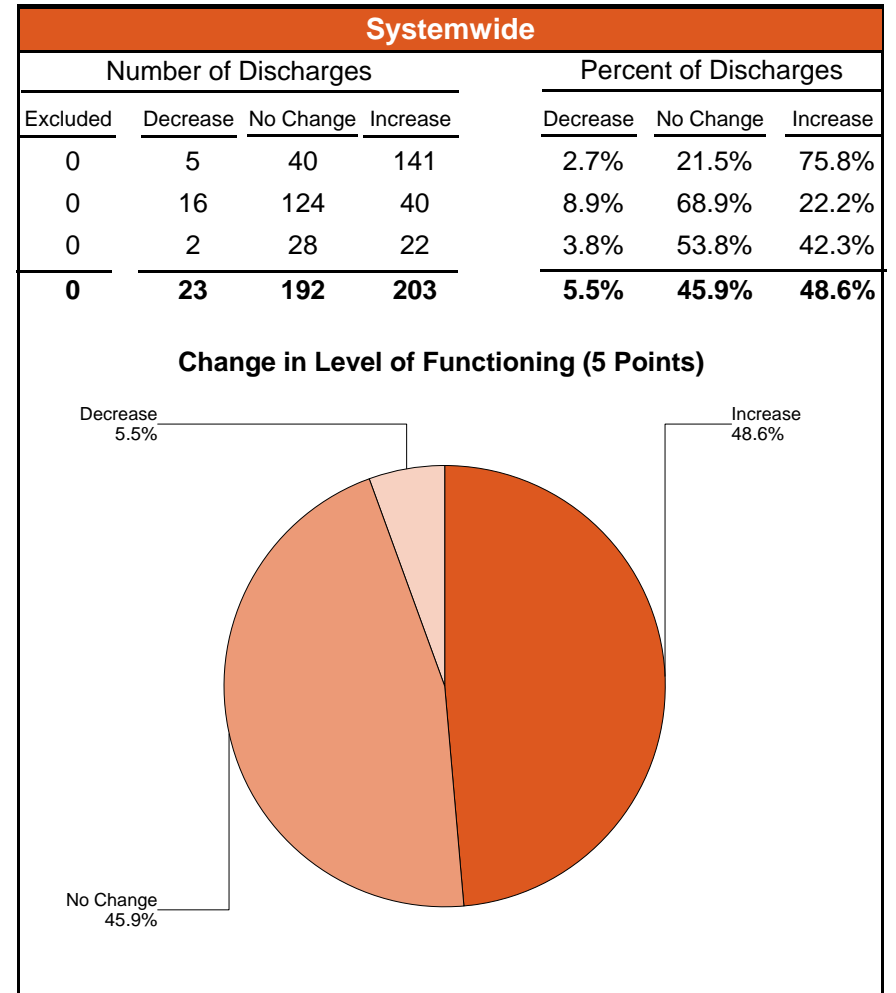
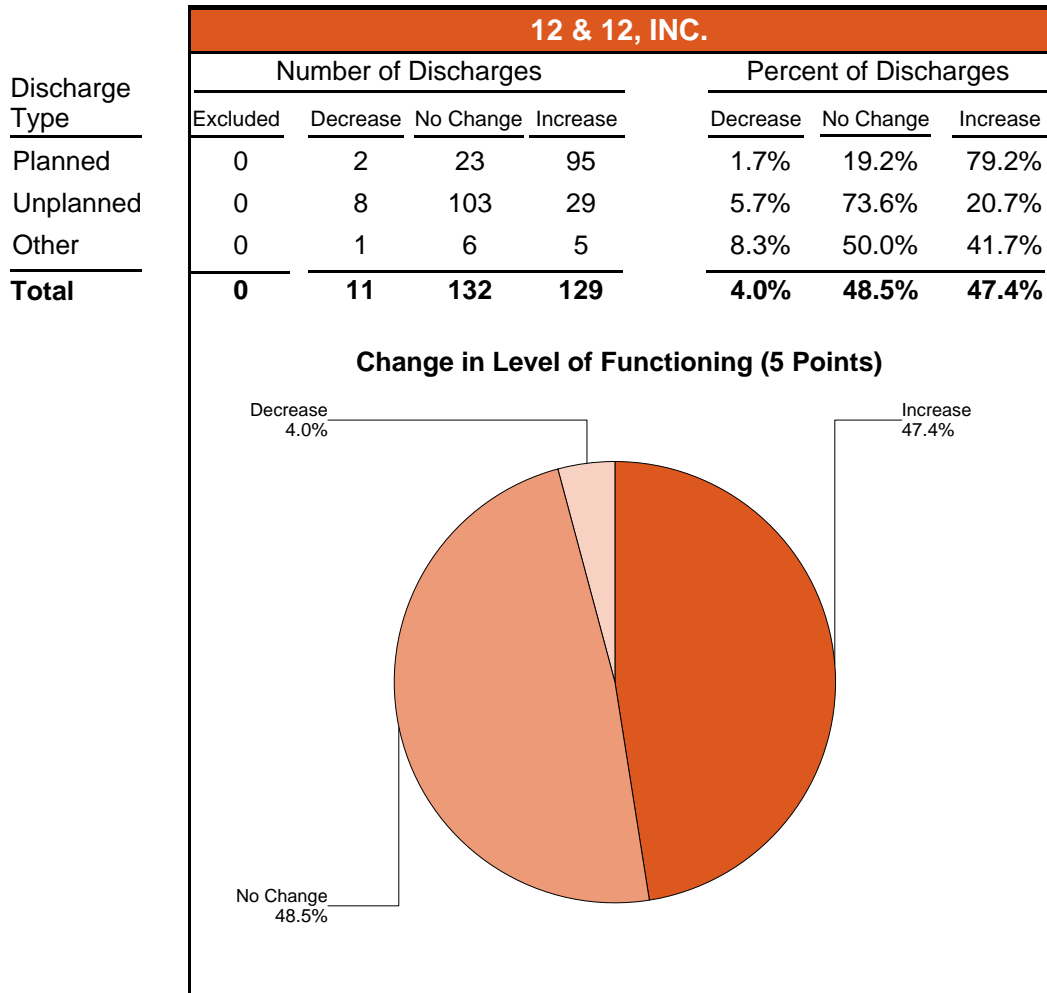
Increased Level of Functioning (5 Pt.) from Admission to Discharge/Level of Care Change Between 01/01/2007 and 12/31/2007

Agency: (640) 12 & 12, INC.

Level of Care: Halfway

Contract Source: All Contract Sources

Age Group: Adults (18+)



Level of Functioning-Pie Chart (5 Point Change)

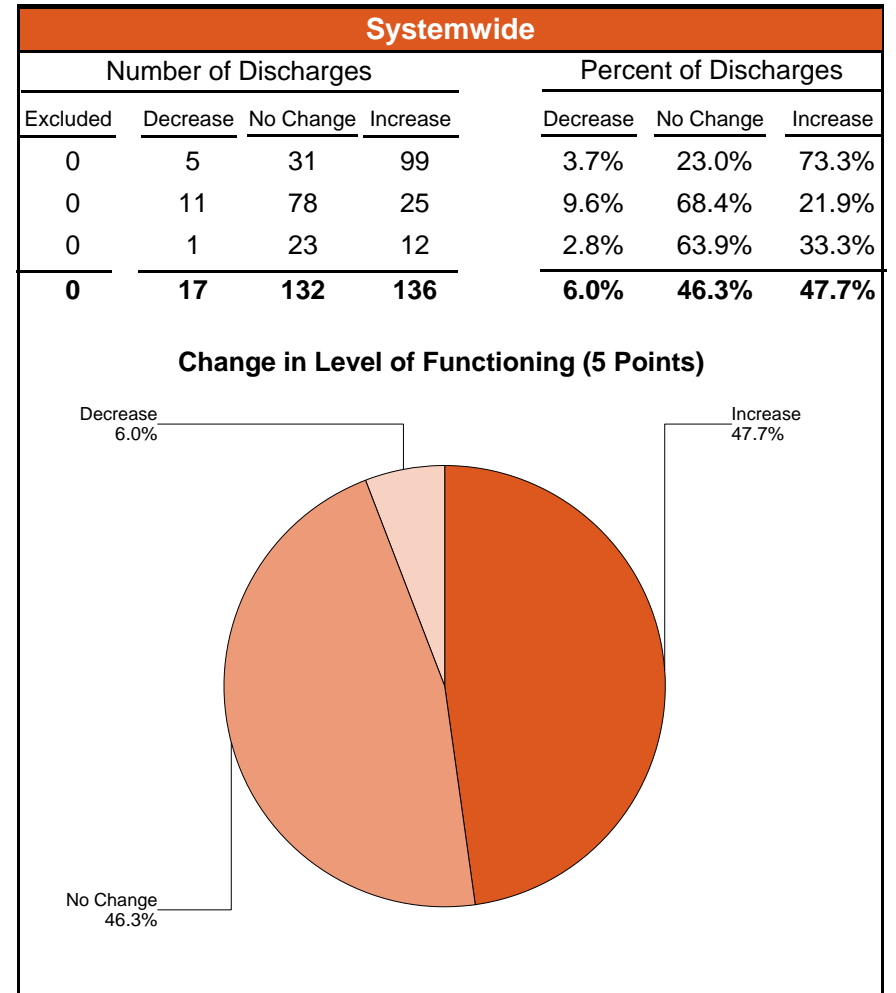
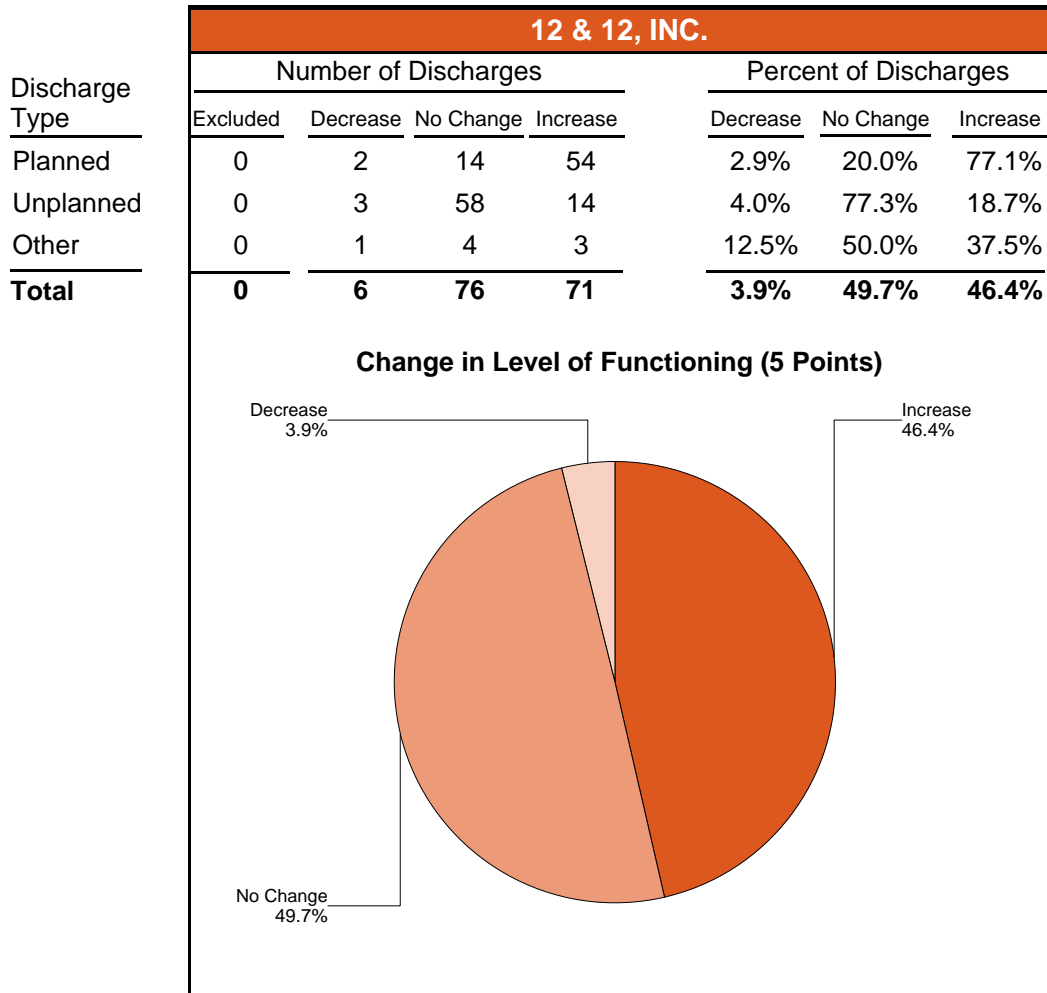
Increased Level of Functioning (5 Pt.) from Admission to Discharge/Level of Care Change Between 01/01/2007 and 12/31/2007

Agency: (640) 12 & 12, INC.

Level of Care: Halfway

Contract Source: (02) ALCOHOL/DRUG

Age Group: Adults (18+)



Level of Functioning-Pie Chart (5 Point Change)

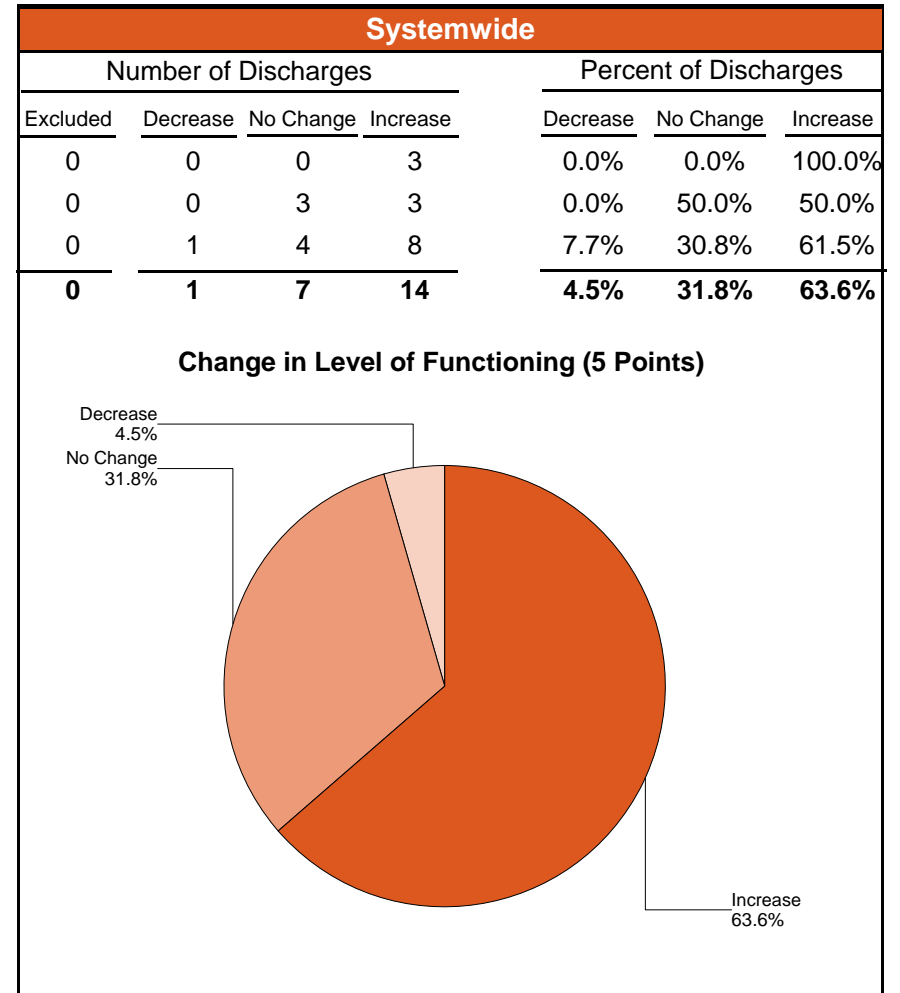
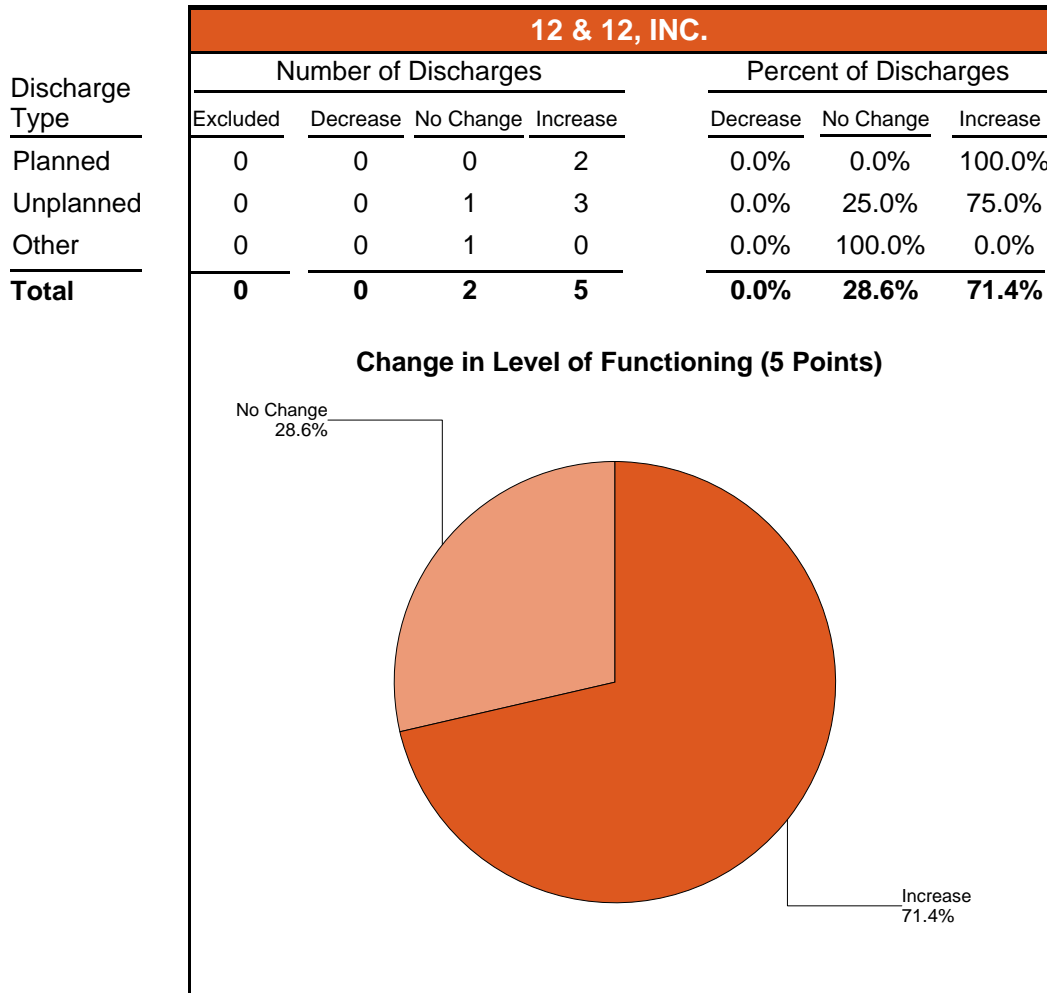
Increased Level of Functioning (5 Pt.) from Admission to Discharge/Level of Care Change Between 01/01/2007 and 12/31/2007

Agency: (640) 12 & 12, INC.

Level of Care: Halfway

Contract Source: (20) DRUG COURT

Age Group: Adults (18+)



Level of Functioning-Pie Chart (5 Point Change)

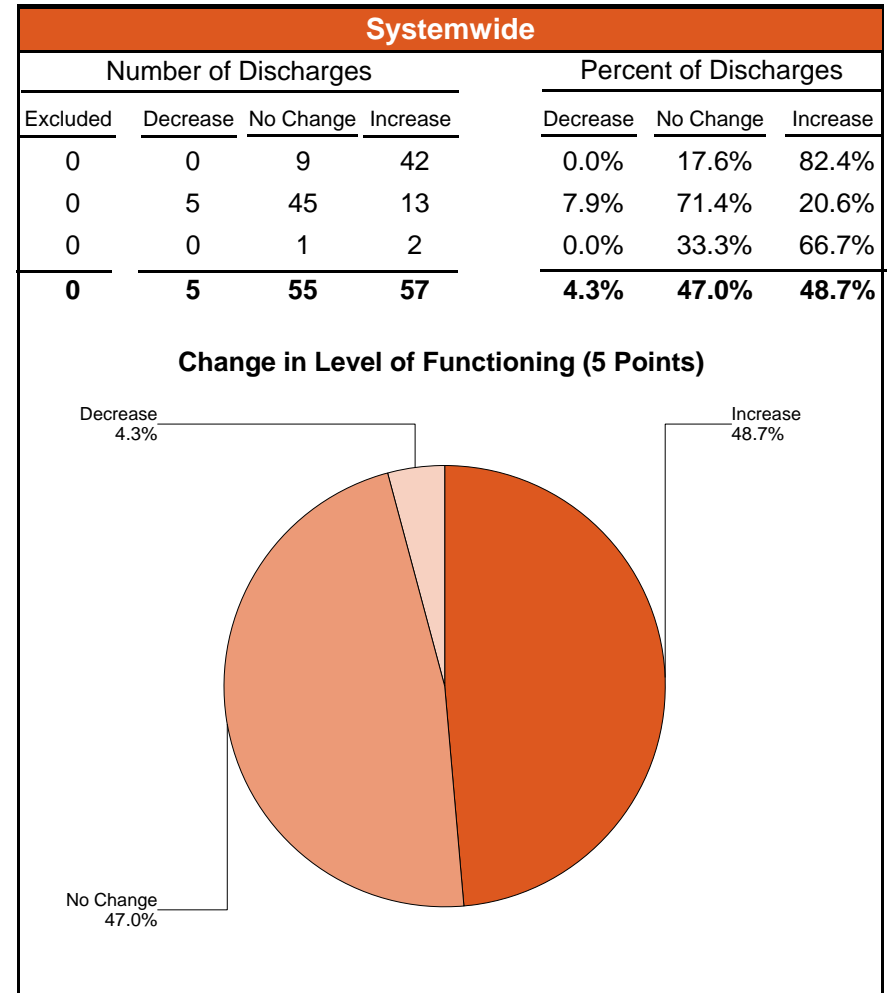
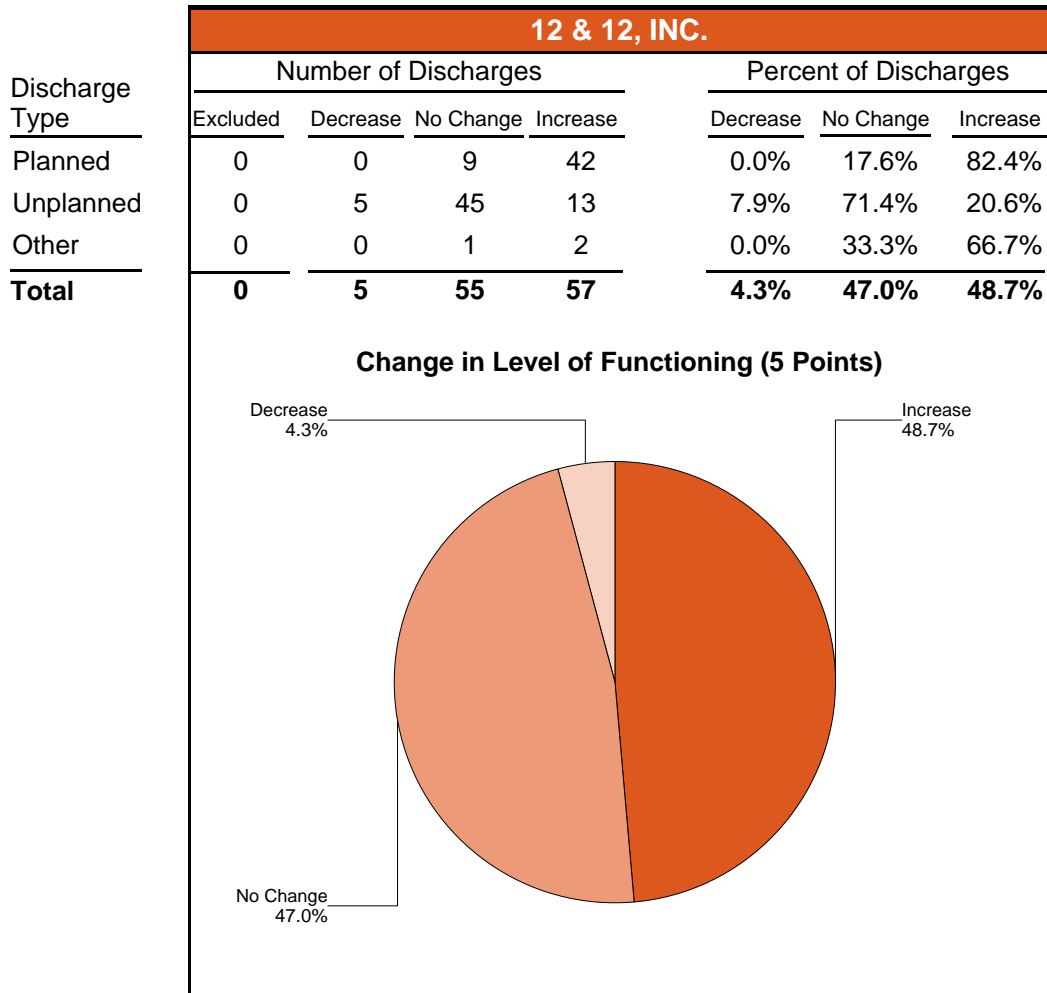
Increased Level of Functioning (5 Pt.) from Admission to Discharge/Level of Care Change Between 01/01/2007 and 12/31/2007

Agency: (640) 12 & 12, INC.

Level of Care: Halfway

Contract Source: (21) ALCOHOL/DRUG SPECIALIZED PROGRAMS

Age Group: Adults (18+)



Level of Functioning-Pie Chart (5 Point Change)

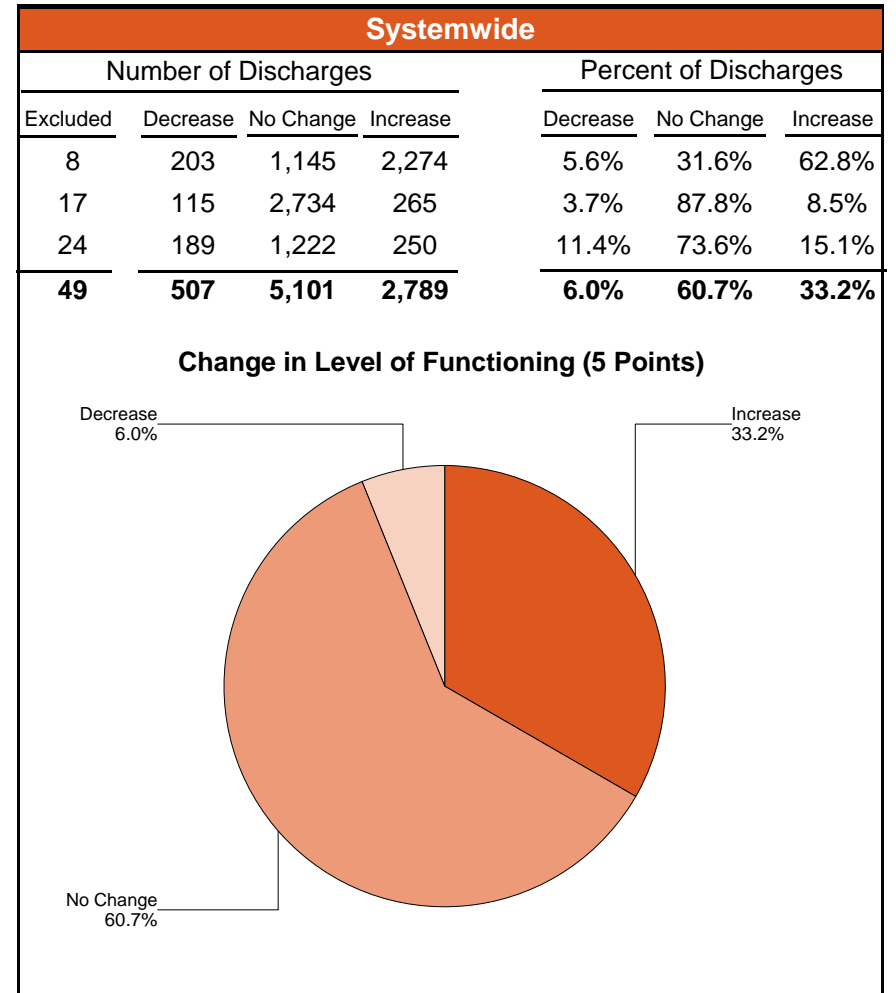
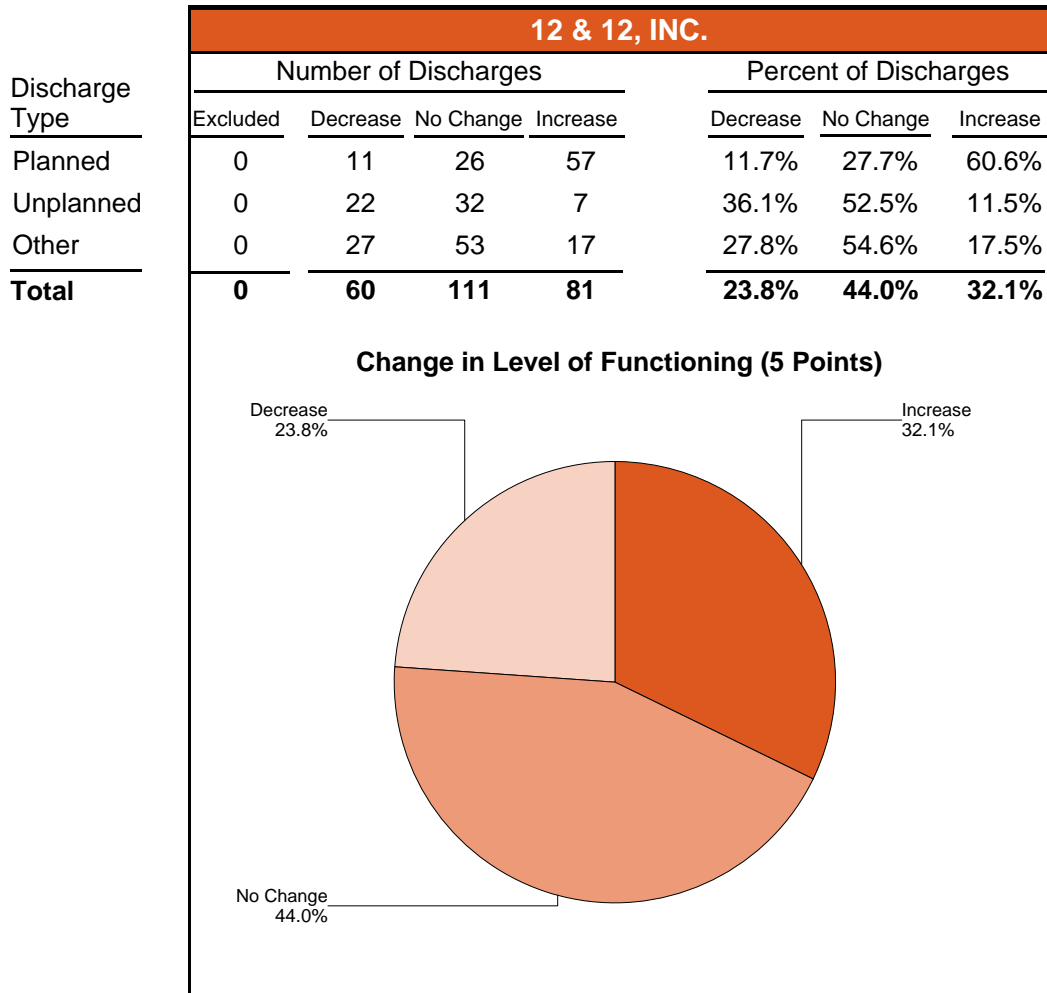
Increased Level of Functioning (5 Pt.) from Admission to Discharge/Level of Care Change Between 01/01/2007 and 12/31/2007

Agency: (640) 12 & 12, INC.

Level of Care: Outpatient

Contract Source: All Substance Abuse Contract Sources (PPMR)

Age Group: Adults (18+)



Level of Functioning-Pie Chart (5 Point Change)

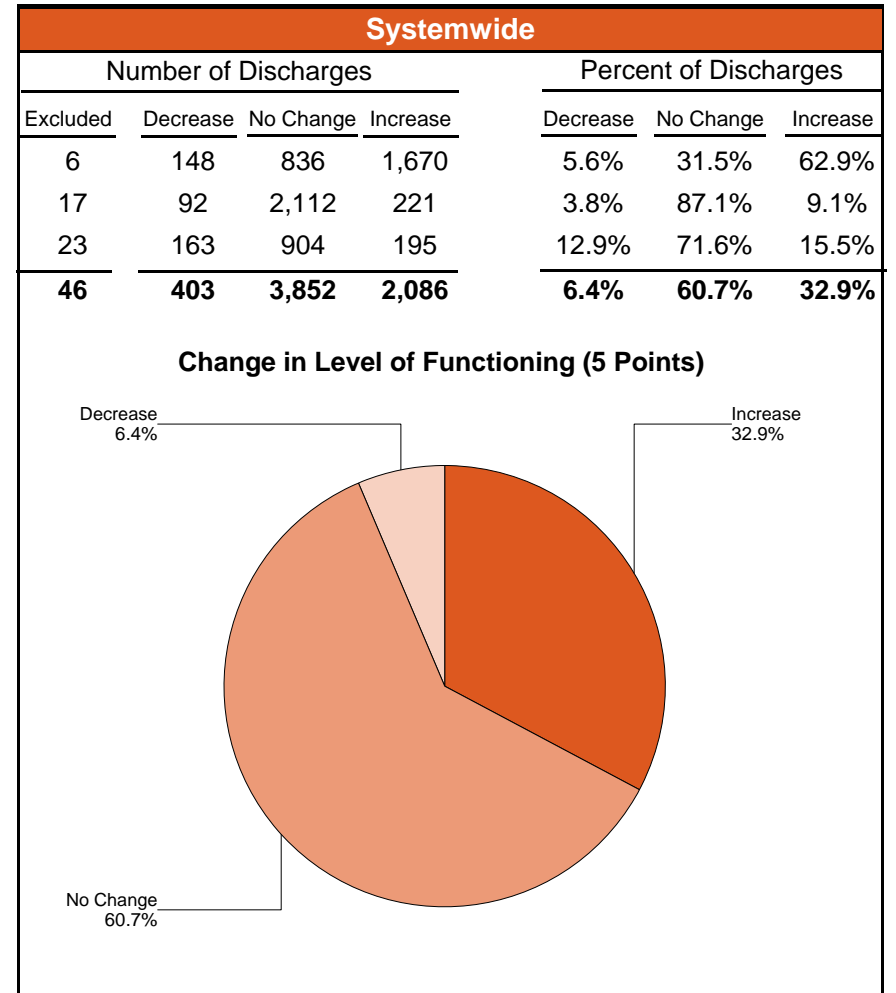
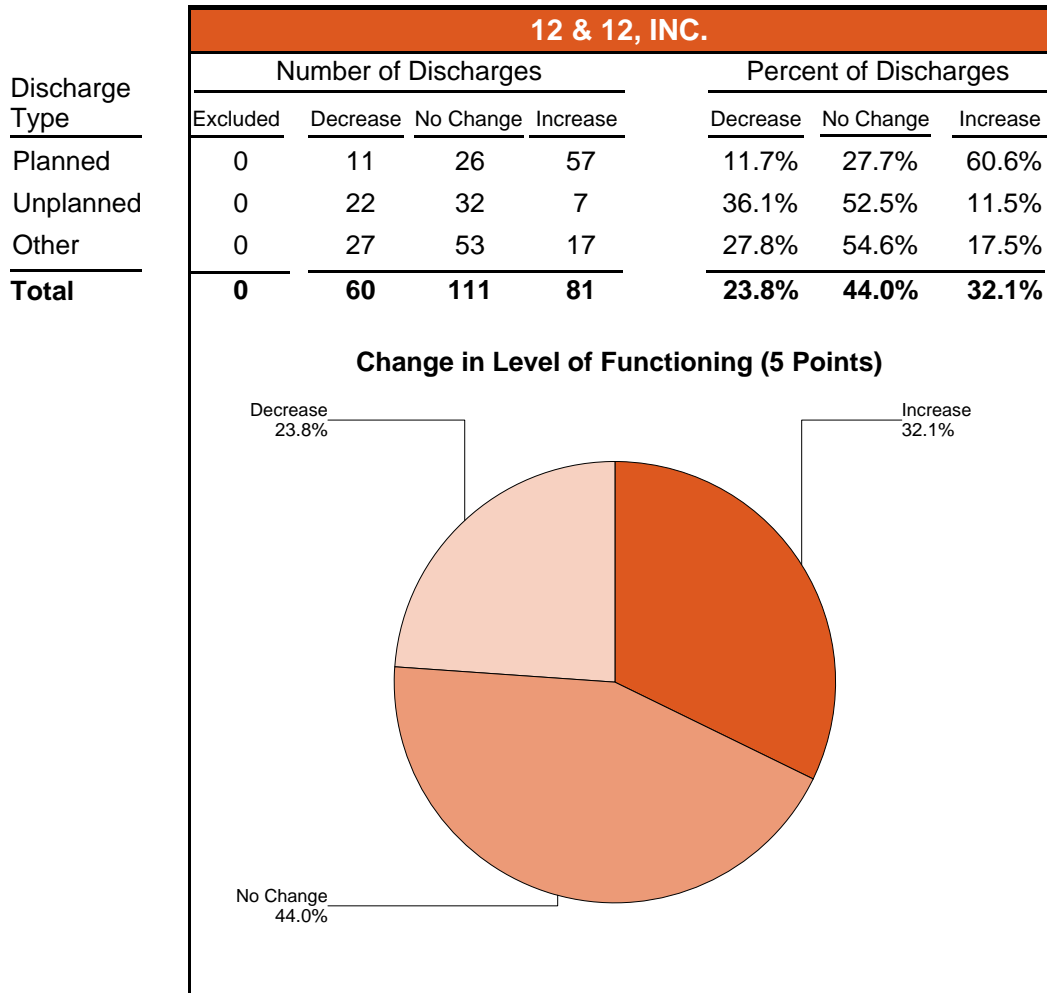
Increased Level of Functioning (5 Pt.) from Admission to Discharge/Level of Care Change Between 01/01/2007 and 12/31/2007

Agency: (640) 12 & 12, INC.

Level of Care: Outpatient

Contract Source: All Contract Sources

Age Group: Adults (18+)



Level of Functioning-Pie Chart (5 Point Change)

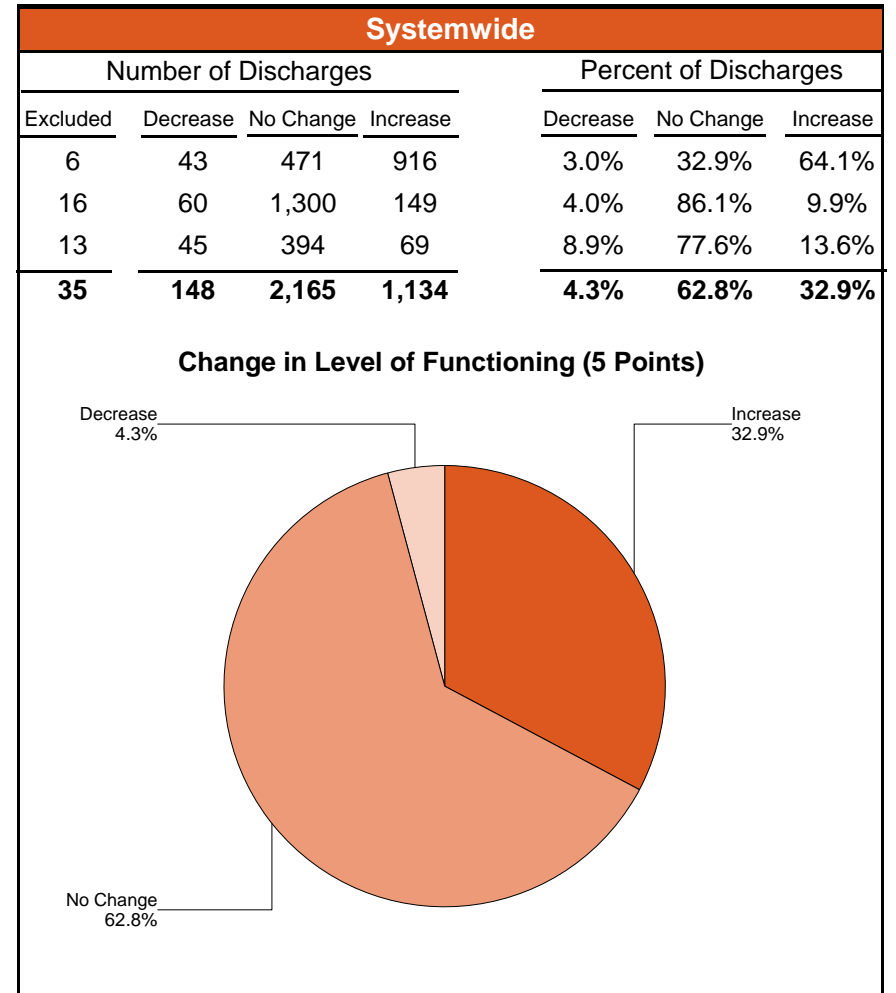
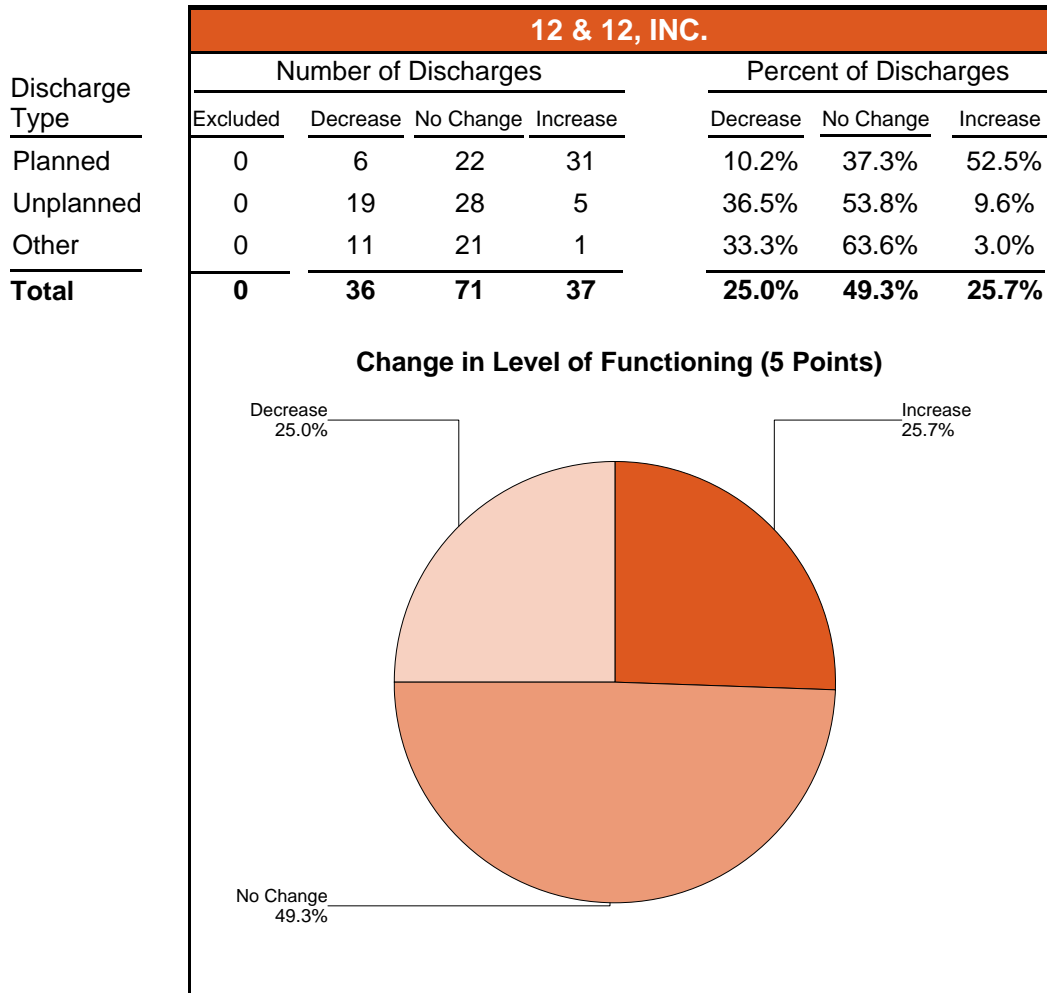
Increased Level of Functioning (5 Pt.) from Admission to Discharge/Level of Care Change Between 01/01/2007 and 12/31/2007

Agency: (640) 12 & 12, INC.

Level of Care: Outpatient

Contract Source: (02) ALCOHOL/DRUG

Age Group: Adults (18+)



Level of Functioning-Pie Chart (5 Point Change)

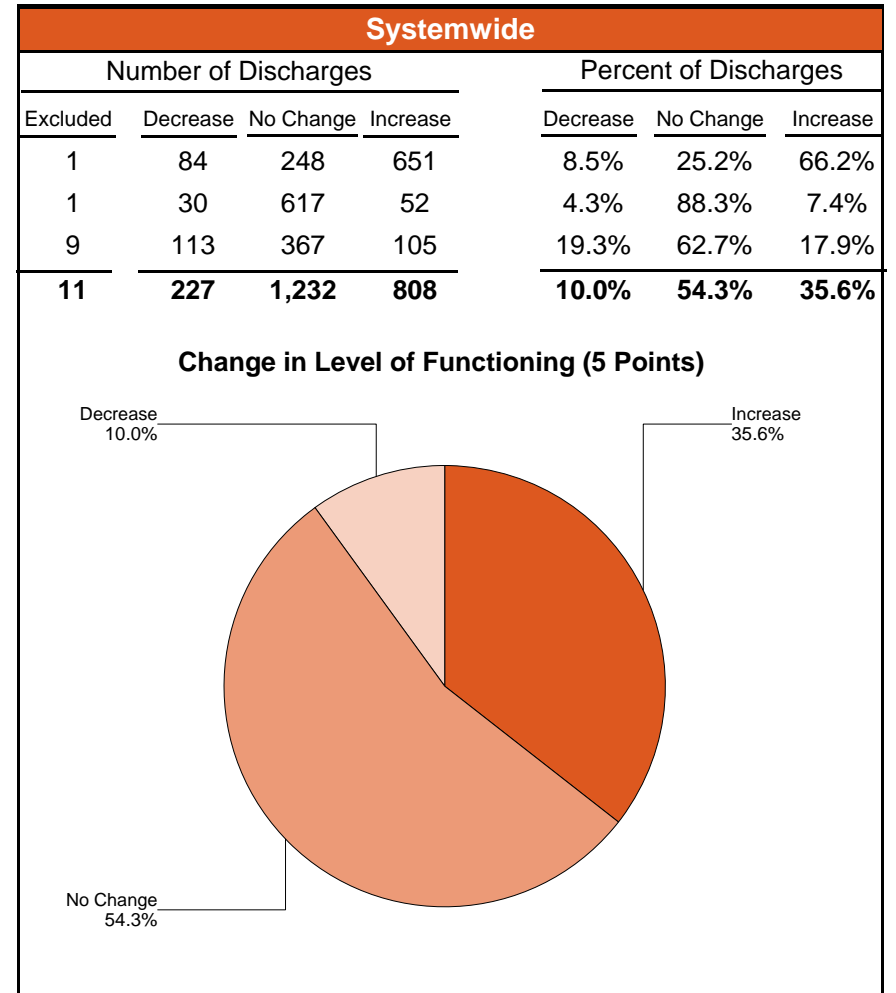
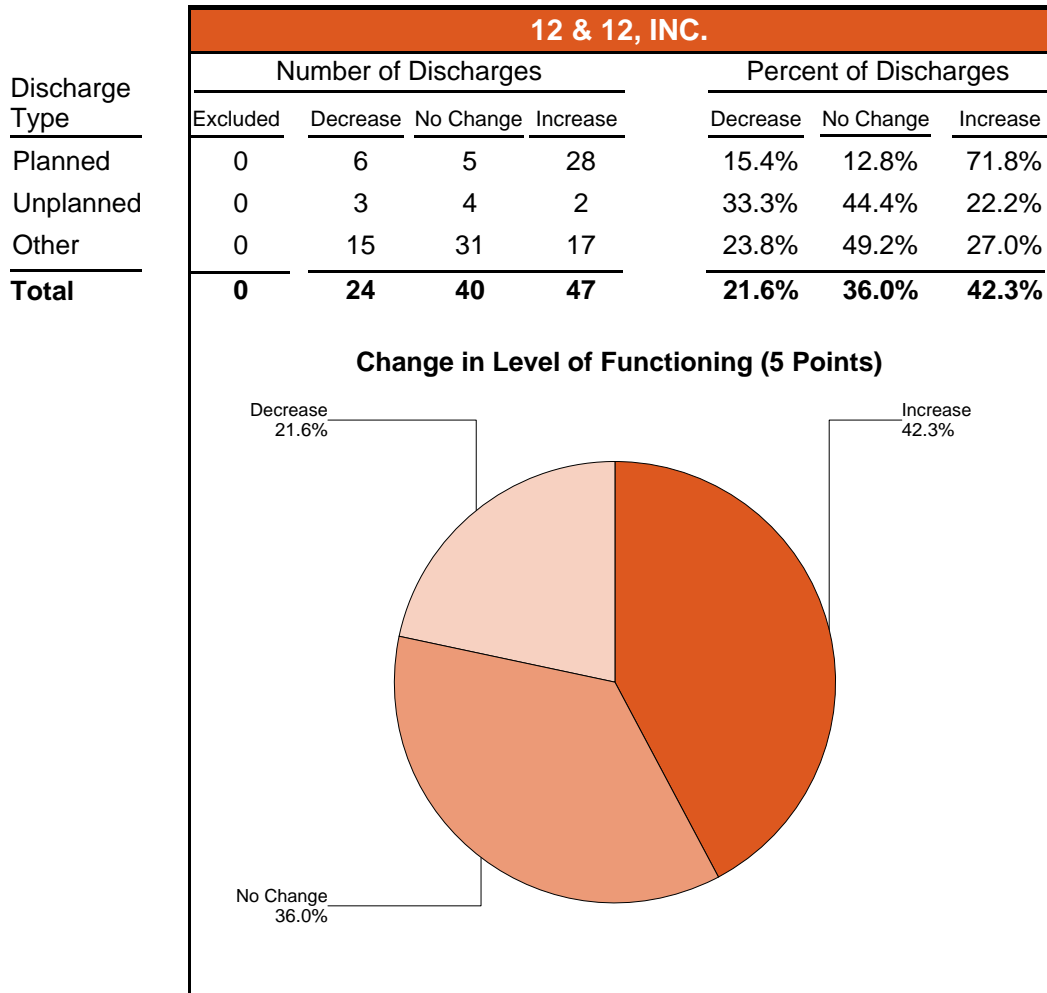
Increased Level of Functioning (5 Pt.) from Admission to Discharge/Level of Care Change Between 01/01/2007 and 12/31/2007

Agency: (640) 12 & 12, INC.

Level of Care: Outpatient

Contract Source: (20) DRUG COURT

Age Group: Adults (18+)



Level of Functioning-Pie Chart (5 Point Change)

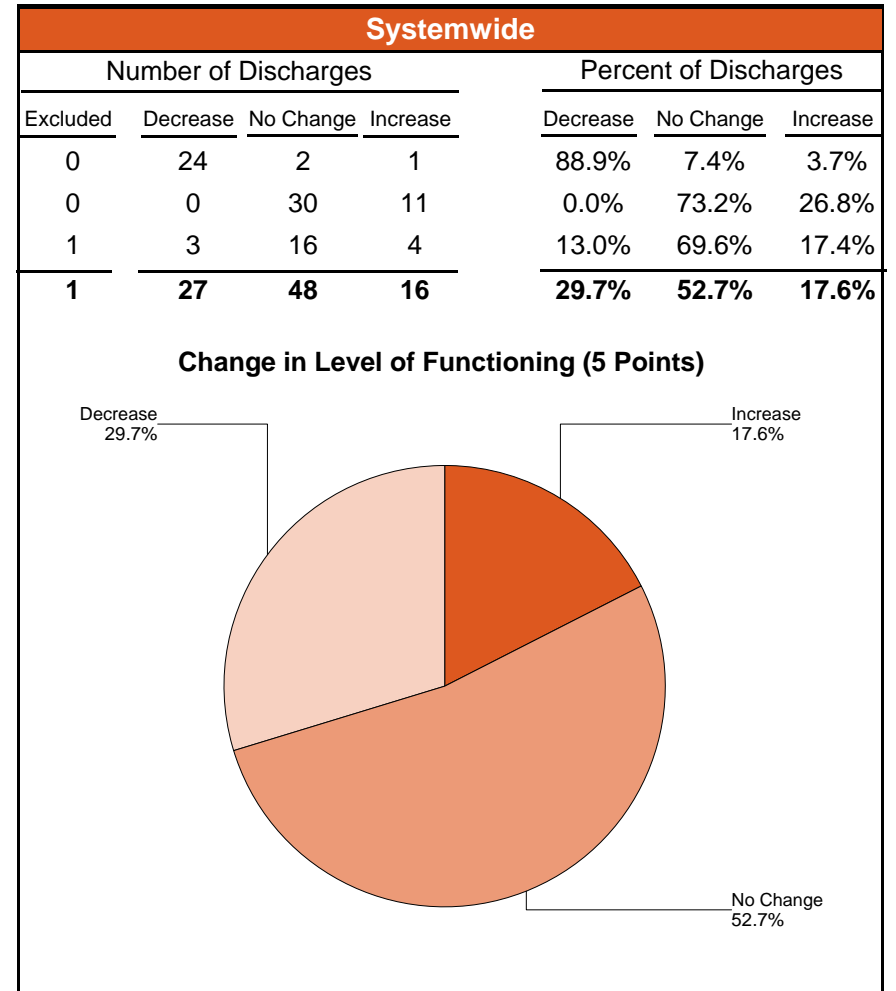
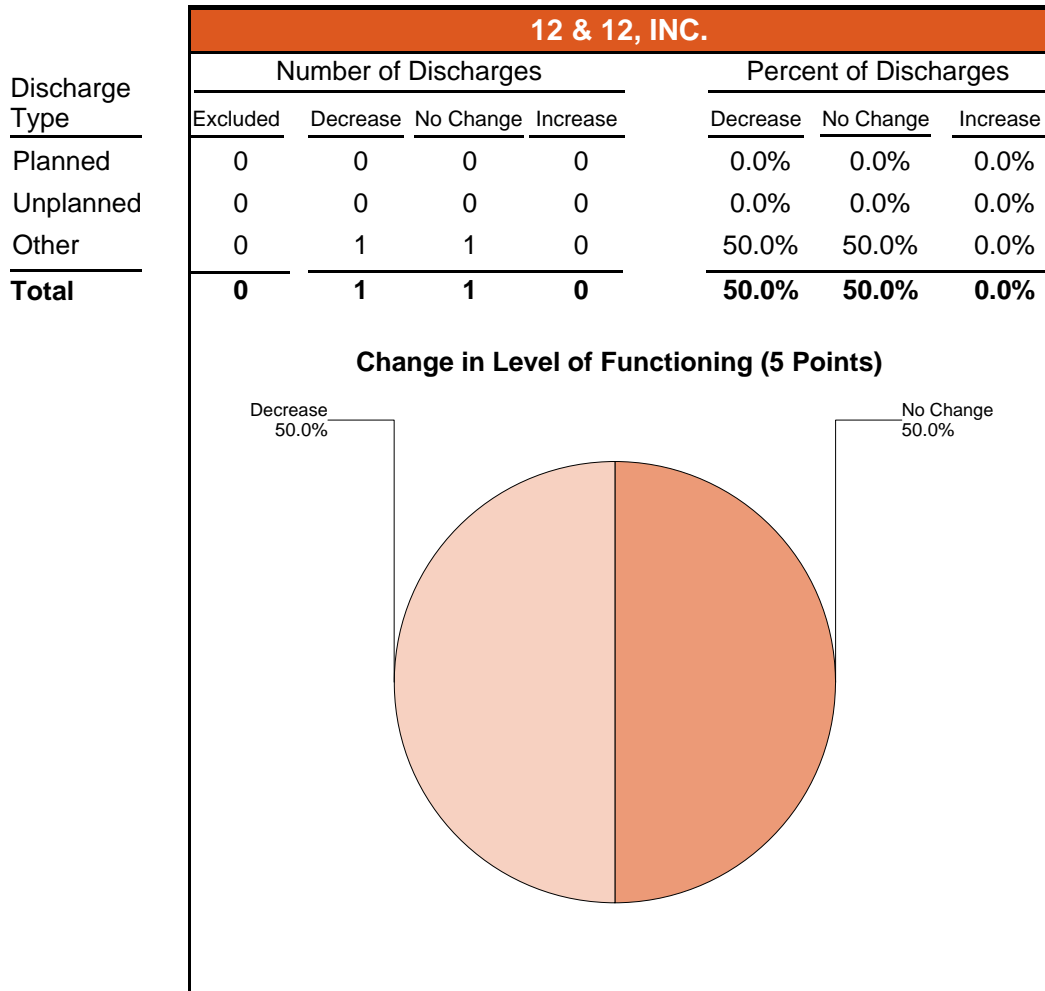
Increased Level of Functioning (5 Pt.) from Admission to Discharge/Level of Care Change Between 01/01/2007 and 12/31/2007

Agency: (640) 12 & 12, INC.

Level of Care: Outpatient

Contract Source: (21) ALCOHOL/DRUG SPECIALIZED PROGRAMS

Age Group: Adults (18+)



Level of Functioning-Pie Chart (5 Point Change)

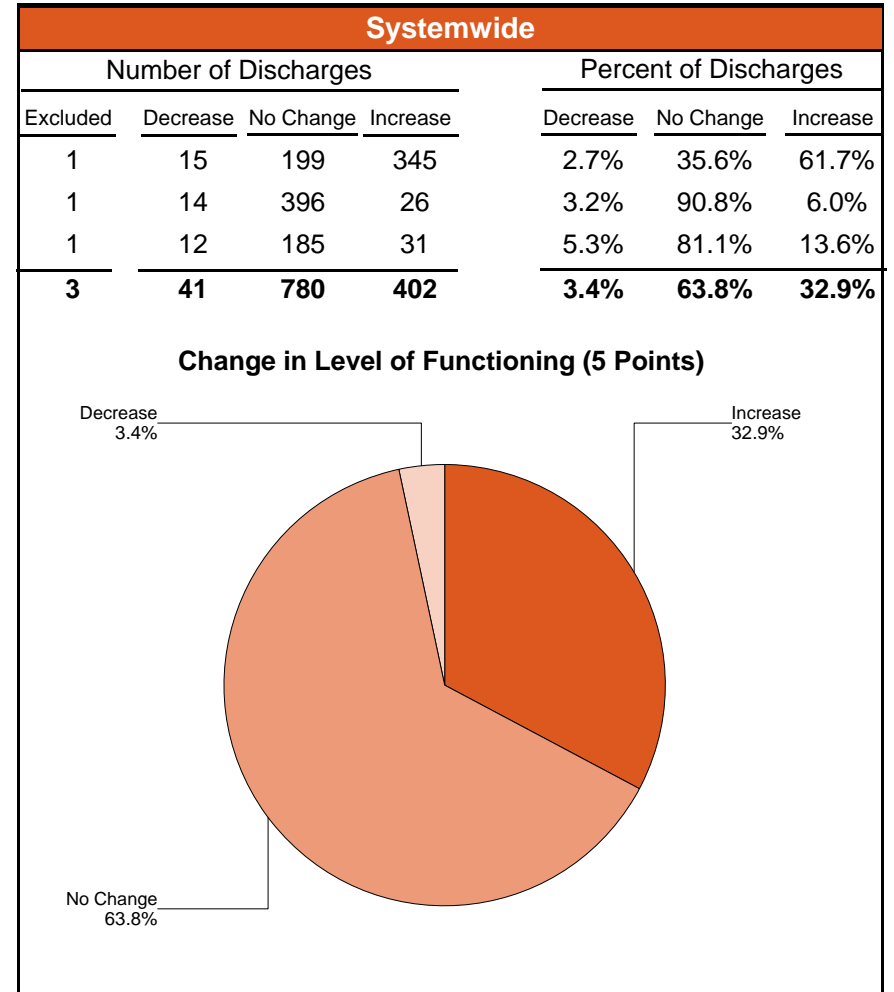
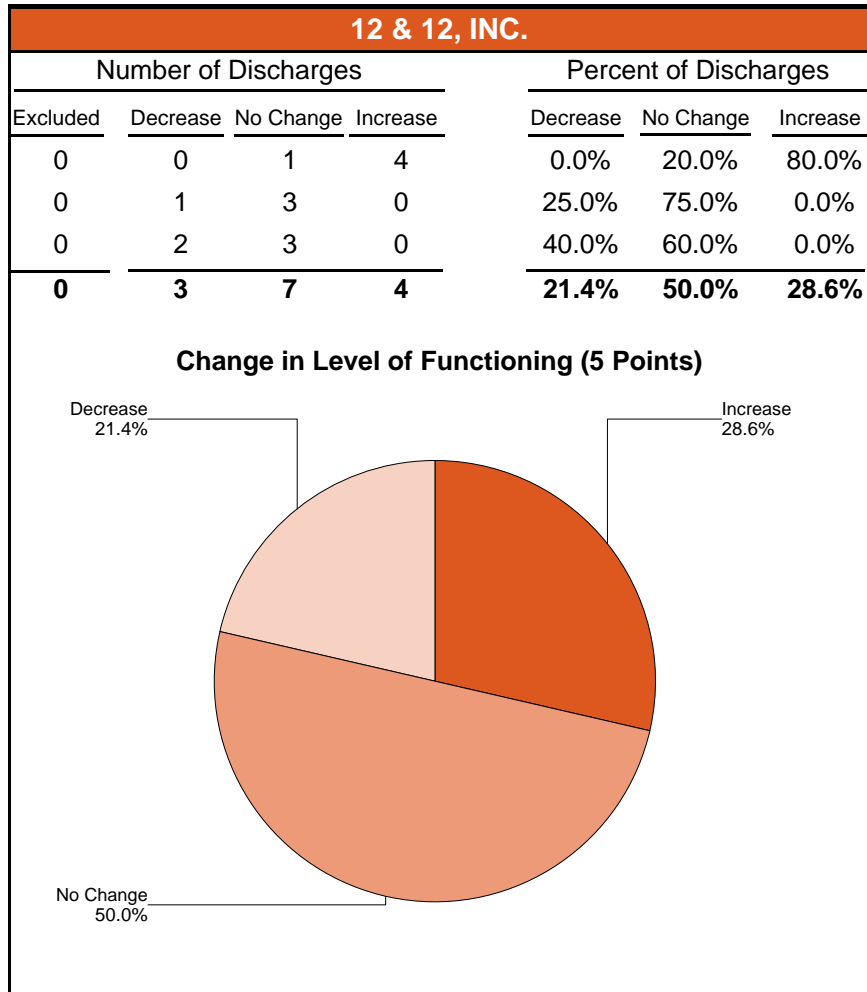
Increased Level of Functioning (5 Pt.) from Admission to Discharge/Level of Care Change Between 01/01/2007 and 12/31/2007

Agency: (640) 12 & 12, INC.

Level of Care: Outpatient

Contract Source: (29) PROBATION AND PAROLE

Age Group: Adults (18+)



Level of Functioning-Pie Chart (5 Point Change)

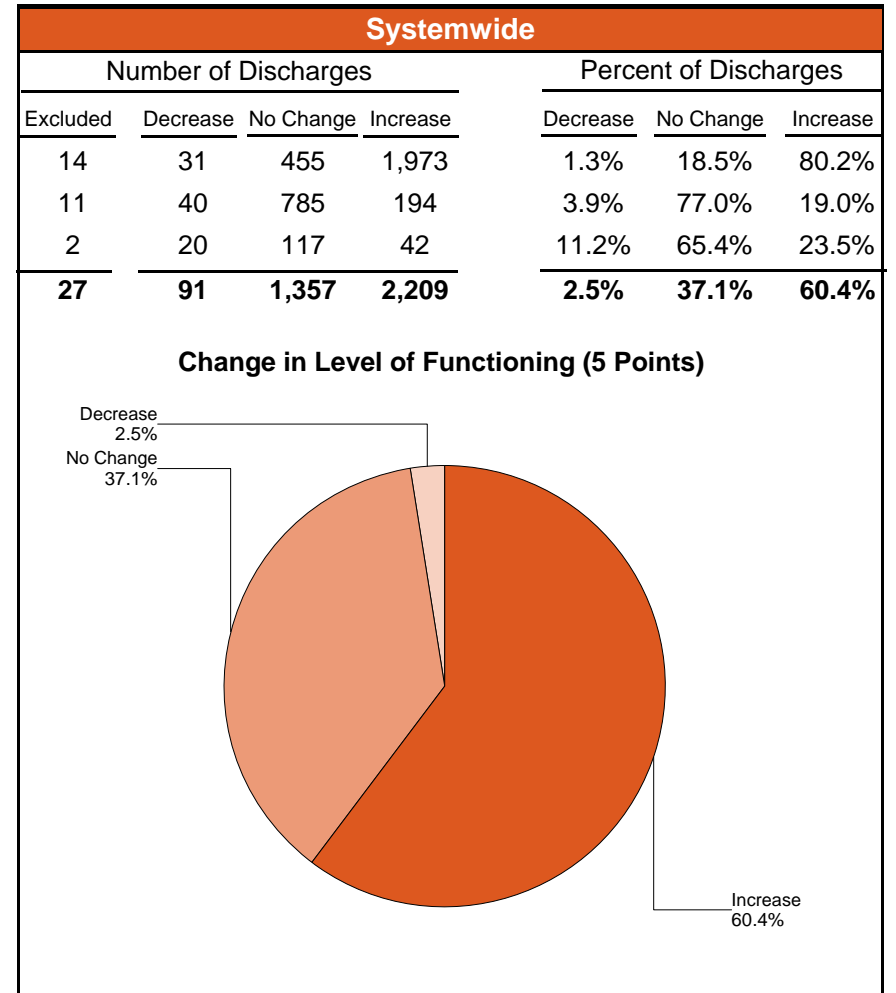
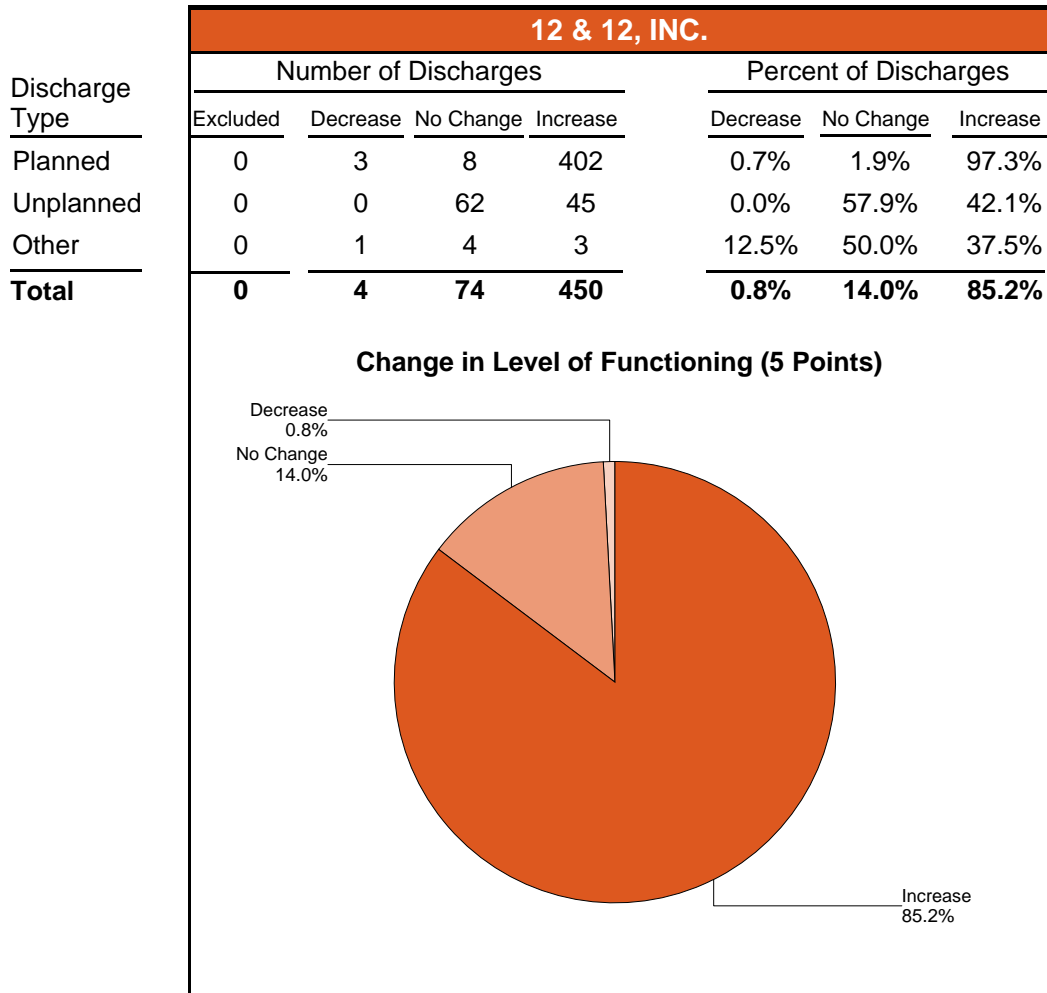
Increased Level of Functioning (5 Pt.) from Admission to Discharge/Level of Care Change Between 01/01/2007 and 12/31/2007

Agency: (640) 12 & 12, INC.

Level of Care: Residential Treatment

Contract Source: All Substance Abuse Contract Sources (PPMR)

Age Group: Adults (18+)



Level of Functioning-Pie Chart (5 Point Change)

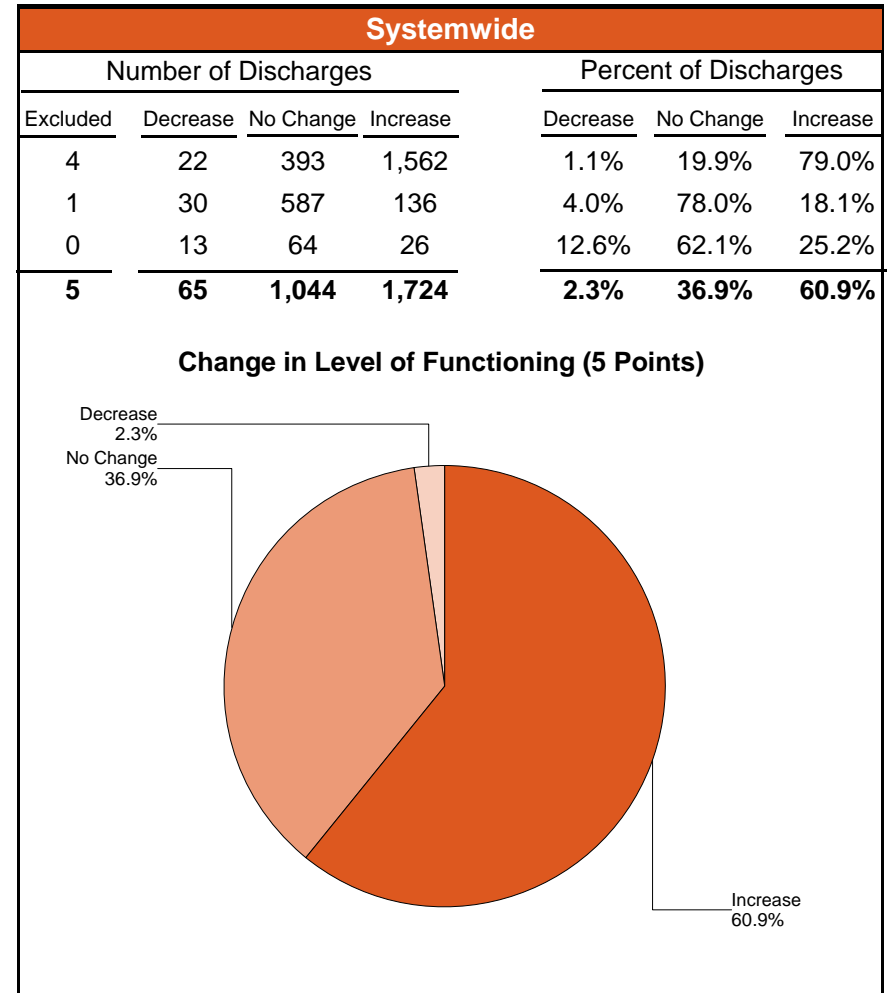
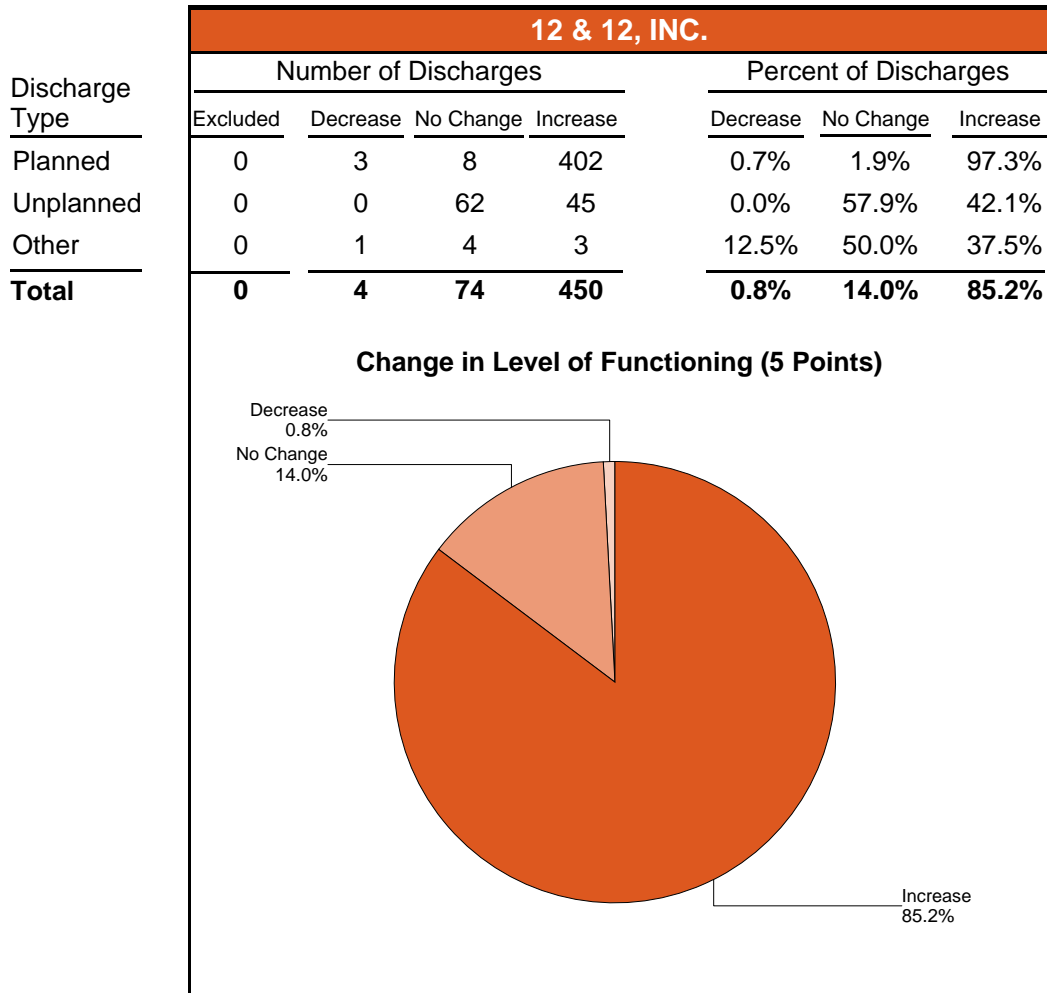
Increased Level of Functioning (5 Pt.) from Admission to Discharge/Level of Care Change Between 01/01/2007 and 12/31/2007

Agency: (640) 12 & 12, INC.

Level of Care: Residential Treatment

Contract Source: All Contract Sources

Age Group: Adults (18+)



Level of Functioning-Pie Chart (5 Point Change)

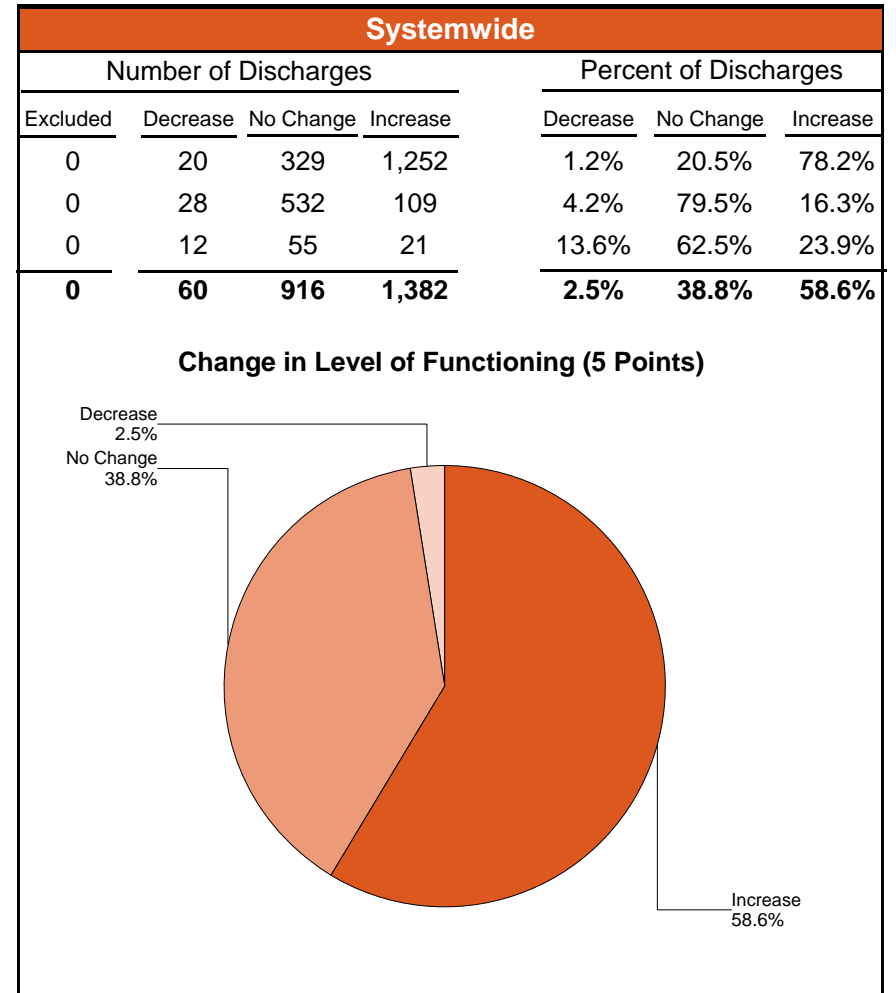
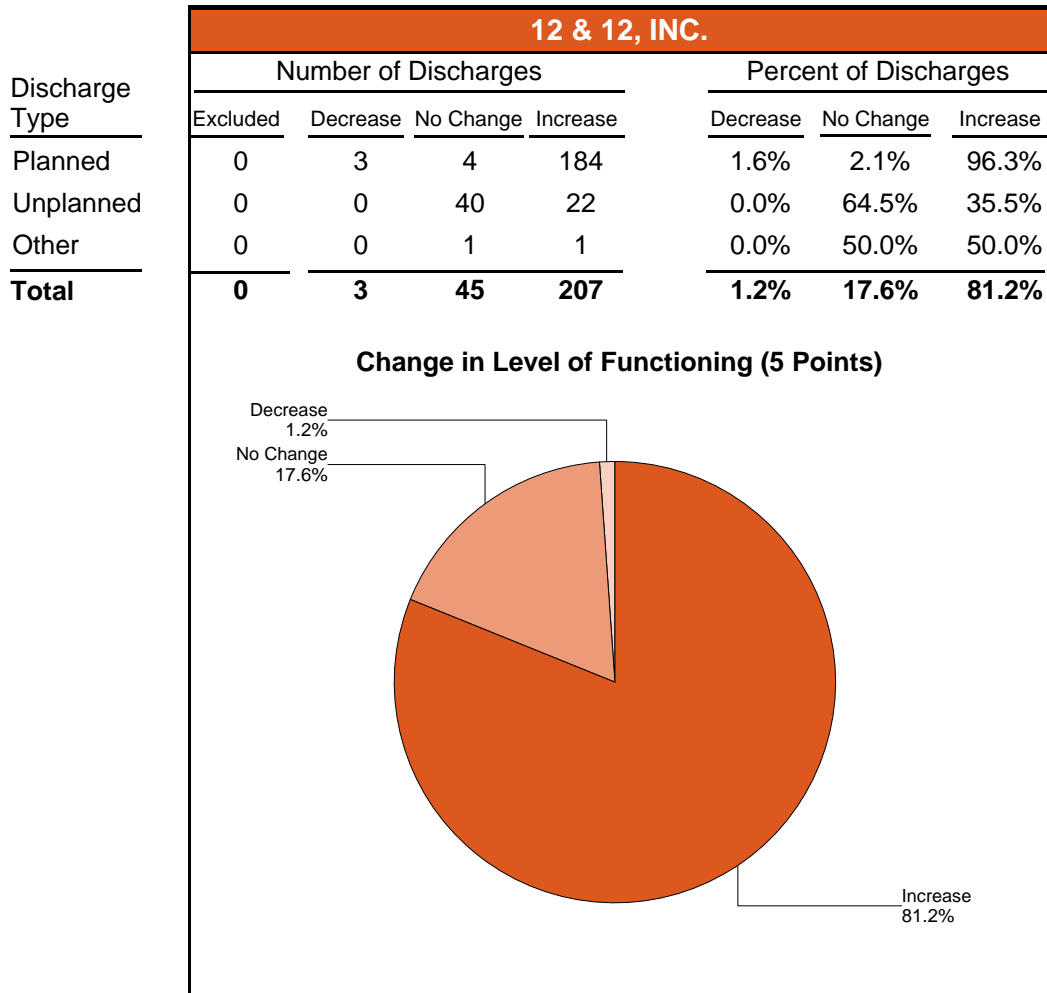
Increased Level of Functioning (5 Pt.) from Admission to Discharge/Level of Care Change Between 01/01/2007 and 12/31/2007

Agency: (640) 12 & 12, INC.

Level of Care: Residential Treatment

Contract Source: (02) ALCOHOL/DRUG

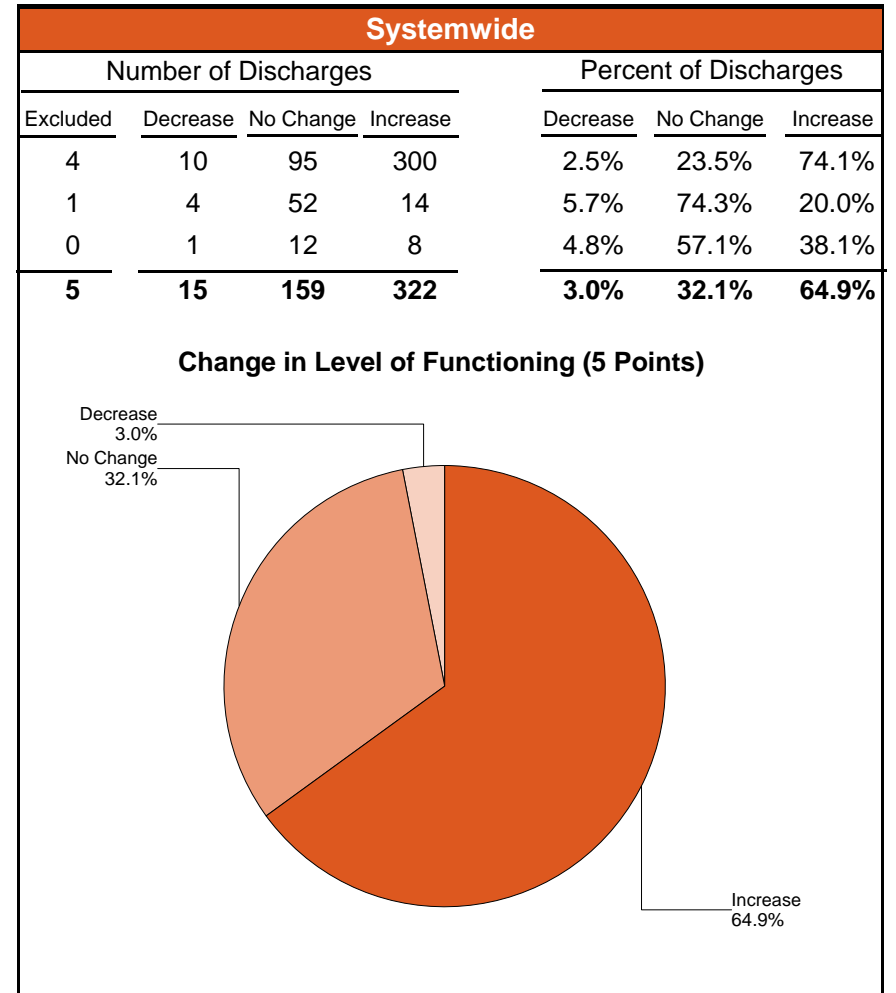
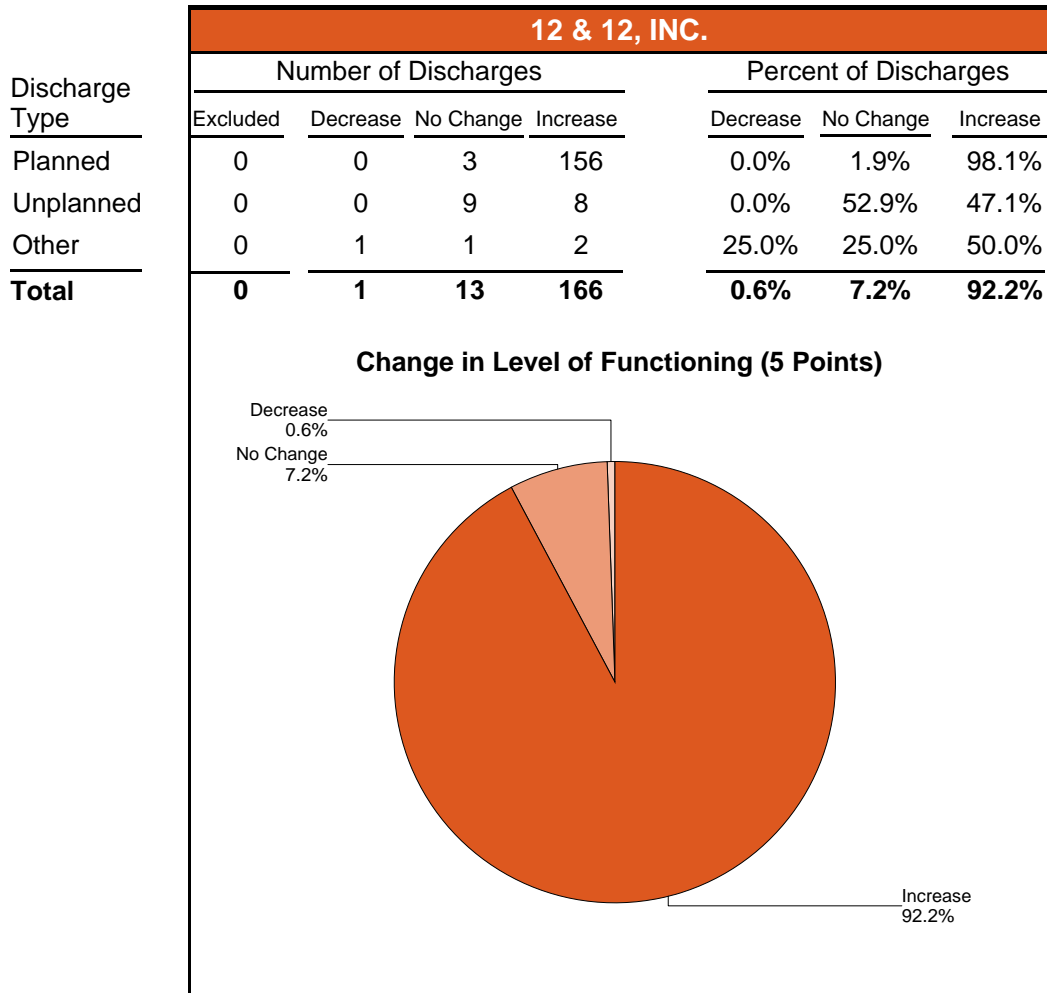
Age Group: Adults (18+)



Level of Functioning-Pie Chart (5 Point Change)

Increased Level of Functioning (5 Pt.) from Admission to Discharge/Level of Care Change Between 01/01/2007 and 12/31/2007

Agency: (640) 12 & 12, INC.
Level of Care: Residential Treatment
Contract Source: (20) DRUG COURT
Age Group: Adults (18+)



Level of Functioning-Pie Chart (5 Point Change)

Increased Level of Functioning (5 Pt.) from Admission to Discharge/Level of Care Change Between 01/01/2007 and 12/31/2007

Agency: (640) 12 & 12, INC.

Level of Care: Residential Treatment

Contract Source: (21) ALCOHOL/DRUG SPECIALIZED PROGRAMS

Age Group: Adults (18+)

