

Planned Discharges-Trend Line

Planned Discharges from Admission to Discharge/Level of Care Change for the last Twelve Quarters
at (640) 12 & 12, INC.

Report Date : 2/5/2008

Data Last Updated on: 02/03/2008

Report Description:

Oklahoma Performance Measures (OPMs)

Outcome: Treatment Completion

Measure: Planned Discharges/Level of Care Change

The information provided in this report reflects the number of discharges/level of care changes, rather than the number of individuals. For example, if a person is discharged five times during the selected time period, the number of discharges would be five. To be included in this report, at least one service must be reported after admission. Also, when an episode includes more than one service reported under multiple contract sources, the episode will be counted under each contract source, but will only be counted once under the 'All Contract Sources' or 'All Substance Abuse Contract Sources (PPMR)' report.

DEFINITIONS:

Discharge: Individual leaves treatment at that agency.

Level of Care Change: Individual is moving from either detox, residential treatment, halfway house or outpatient to another level of care within an agency.

Systemwide: Represents all ODMHSAS-contracted and operated facilities which have that level of care and contract source.

All Substance Abuse Contract Sources (PPMR): Includes the following contract source codes: 02, 03, 17, 20, 21, 22, 23, 27, 29, 41, 44, 49, 54, 61 and 70. These contract sources are included in the Substance Abuse Provider Performance Management Report.

All Contract Sources: All contract sources which this agency reports.

Planned, Unplanned & Other Discharge Types: (see below)

Notes:

Data for this report are only updated by ODMHSAS staff at intervals. If the "Data Last Updated on:" is more than two weeks past, please contact Mark A. Reynolds at mreynolds@odmhsas.org or (405) 522-3824.

Discharge Codes:

Planned

60 - Completed Treatment
61 - Completed Court Treatment
40 - Level of Care Change

Unplanned

62 - Left ACA/90 Days
66 - Broke Rules
67 - AWOL
70 - Discharge Due to Treatment Incompatibility
92 - No service in 180 Days (auto-discharge)

Other

63 - Moved
64 - Transferred to another treatment facility
65 - Incarcerated
68 - Death
69 - Failed to begin Treatment

Planned Discharges-Trend Line

Planned Discharges/Level of Care Changes for the last Twelve Quarters

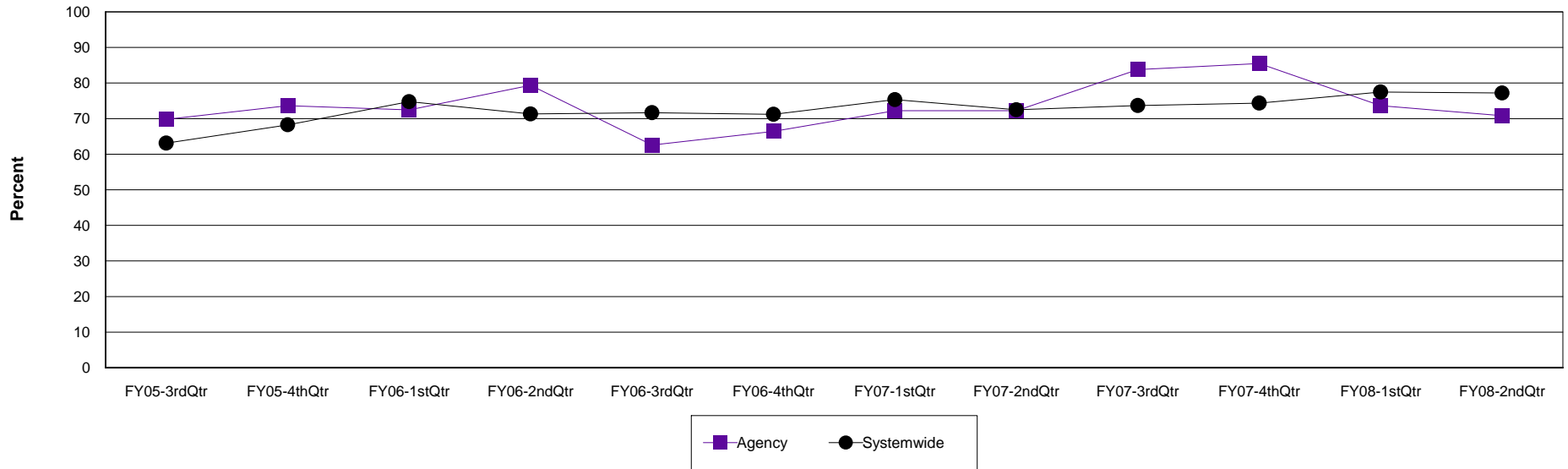
Agency: (640) 12 & 12, INC.

Level of Care: Detox

Contract Source: All Substance Abuse Contract Sources (PPMR)

Age Group: Adults (18+)

Planned Discharges at 12 & 12, INC.



Agency	FY05-3rdQtr	FY05-4thQtr	FY06-1stQtr	FY06-2ndQtr	FY06-3rdQtr	FY06-4thQtr	FY07-1stQtr	FY07-2ndQtr	FY07-3rdQtr	FY07-4thQtr	FY08-1stQtr	FY08-2ndQtr
Planned	97	106	113	127	102	89	117	104	98	53	53	85
Discharges	139	144	156	160	163	134	162	144	117	62	72	120
Percent	69.8%	73.6%	72.4%	79.4%	62.6%	66.4%	72.2%	72.2%	83.8%	85.5%	73.6%	70.8%

Systemwide	FY05-3rdQtr	FY05-4thQtr	FY06-1stQtr	FY06-2ndQtr	FY06-3rdQtr	FY06-4thQtr	FY07-1stQtr	FY07-2ndQtr	FY07-3rdQtr	FY07-4thQtr	FY08-1stQtr	FY08-2ndQtr
Planned	806	890	693	564	607	559	644	566	562	542	543	636
Discharges	1,277	1,304	927	791	847	785	855	781	763	729	701	824
Percent	63.1%	68.3%	74.8%	71.3%	71.7%	71.2%	75.3%	72.5%	73.7%	74.3%	77.5%	77.2%

Planned Discharges-Trend Line

Planned Discharges/Level of Care Changes for the last Twelve Quarters

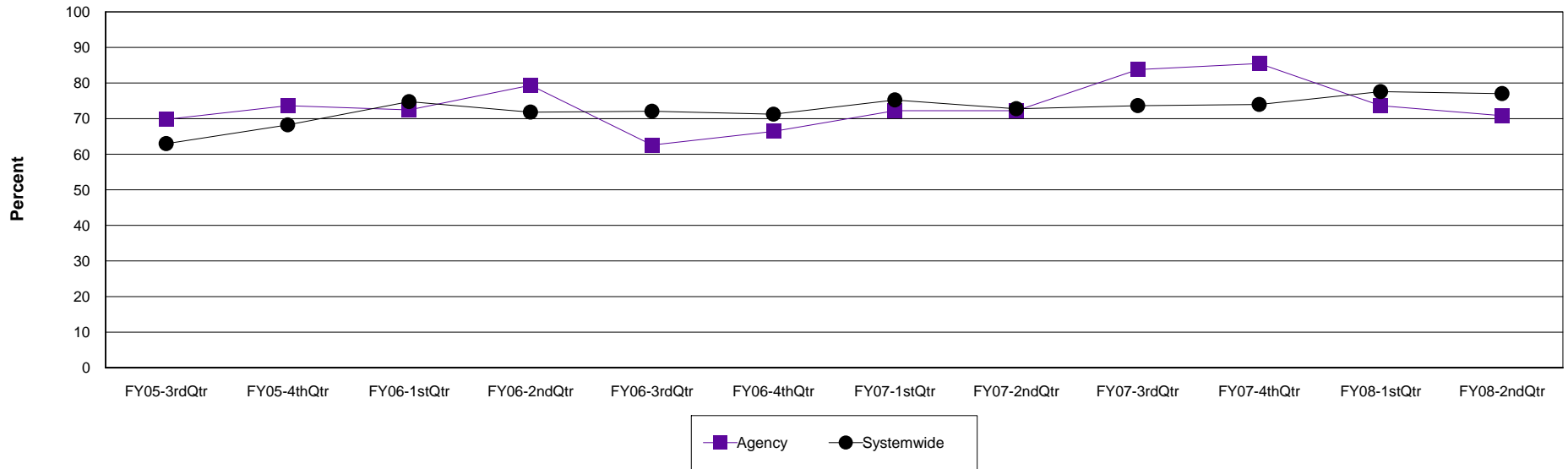
Agency: (640) 12 & 12, INC.

Level of Care: Detox

Contract Source: All Contract Sources

Age Group: Adults (18+)

Planned Discharges at 12 & 12, INC.



Agency	FY05-3rdQtr	FY05-4thQtr	FY06-1stQtr	FY06-2ndQtr	FY06-3rdQtr	FY06-4thQtr	FY07-1stQtr	FY07-2ndQtr	FY07-3rdQtr	FY07-4thQtr	FY08-1stQtr	FY08-2ndQtr
Planned	97	106	113	127	102	89	117	104	98	53	53	85
Discharges	139	144	156	160	163	134	162	144	117	62	72	120
Percent	69.8%	73.6%	72.4%	79.4%	62.6%	66.4%	72.2%	72.2%	83.8%	85.5%	73.6%	70.8%

Systemwide	FY05-3rdQtr	FY05-4thQtr	FY06-1stQtr	FY06-2ndQtr	FY06-3rdQtr	FY06-4thQtr	FY07-1stQtr	FY07-2ndQtr	FY07-3rdQtr	FY07-4thQtr	FY08-1stQtr	FY08-2ndQtr
Planned	795	878	684	560	606	552	638	558	561	531	536	623
Discharges	1,263	1,287	915	780	841	775	848	767	762	718	691	809
Percent	62.9%	68.2%	74.8%	71.8%	72.1%	71.2%	75.2%	72.8%	73.6%	74.0%	77.6%	77.0%

Planned Discharges-Trend Line

Planned Discharges/Level of Care Changes for the last Twelve Quarters

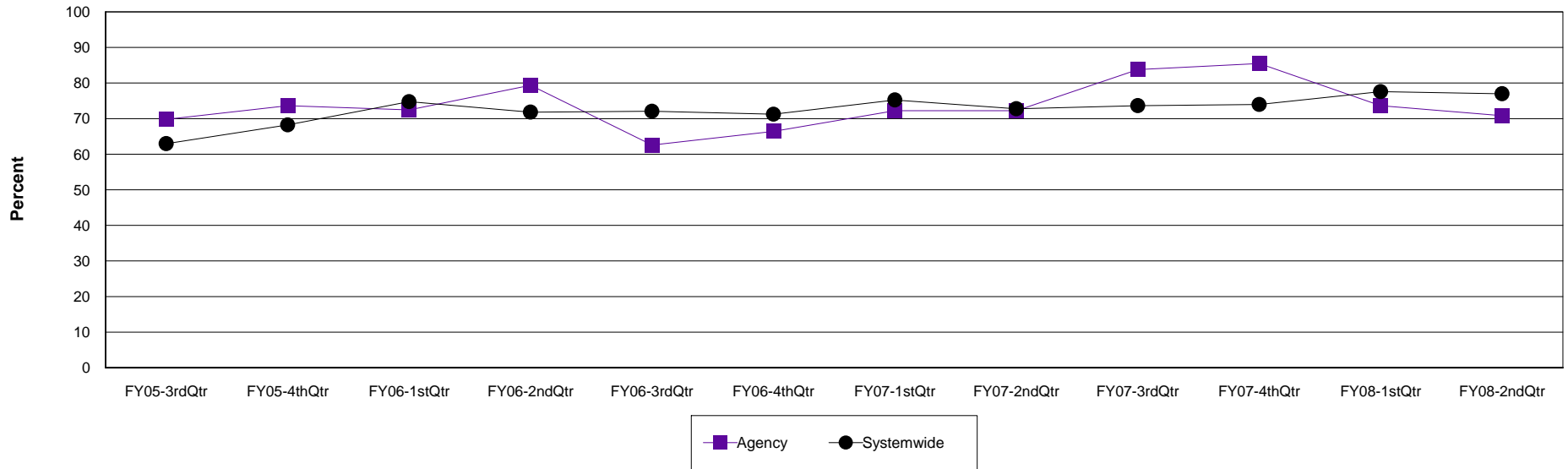
Agency: (640) 12 & 12, INC.

Level of Care: Detox

Contract Source: (02) ALCOHOL/DRUG

Age Group: Adults (18+)

Planned Discharges at 12 & 12, INC.



Agency	FY05-3rdQtr	FY05-4thQtr	FY06-1stQtr	FY06-2ndQtr	FY06-3rdQtr	FY06-4thQtr	FY07-1stQtr	FY07-2ndQtr	FY07-3rdQtr	FY07-4thQtr	FY08-1stQtr	FY08-2ndQtr
Planned	97	106	113	127	102	89	117	104	98	53	53	85
Discharges	139	144	156	160	163	134	162	144	117	62	72	120
Percent	69.8%	73.6%	72.4%	79.4%	62.6%	66.4%	72.2%	72.2%	83.8%	85.5%	73.6%	70.8%

Systemwide	FY05-3rdQtr	FY05-4thQtr	FY06-1stQtr	FY06-2ndQtr	FY06-3rdQtr	FY06-4thQtr	FY07-1stQtr	FY07-2ndQtr	FY07-3rdQtr	FY07-4thQtr	FY08-1stQtr	FY08-2ndQtr
Planned	795	878	684	560	606	552	638	558	561	531	536	622
Discharges	1,263	1,287	915	780	841	775	848	767	762	718	691	808
Percent	62.9%	68.2%	74.8%	71.8%	72.1%	71.2%	75.2%	72.8%	73.6%	74.0%	77.6%	77.0%

Planned Discharges-Trend Line

Planned Discharges/Level of Care Changes for the last Twelve Quarters

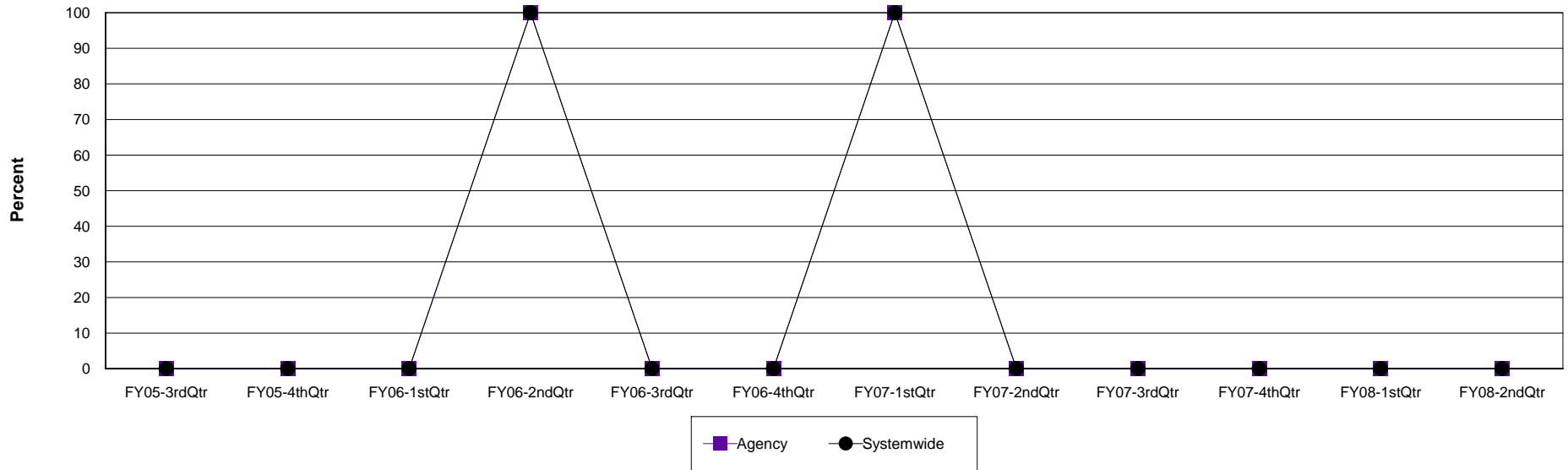
Agency: (640) 12 & 12, INC.

Level of Care: Detox

Contract Source: (21) ALCOHOL/DRUG SPECIALIZED PROGRAMS

Age Group: Adults (18+)

Planned Discharges at 12 & 12, INC.



Agency	FY05-3rdQtr	FY05-4thQtr	FY06-1stQtr	FY06-2ndQtr	FY06-3rdQtr	FY06-4thQtr	FY07-1stQtr	FY07-2ndQtr	FY07-3rdQtr	FY07-4thQtr	FY08-1stQtr	FY08-2ndQtr
Planned	0	0	0	1	0	0	1	0	0	0	0	0
Discharges	1	1	0	1	0	2	1	0	0	0	0	0
Percent	0.0%	0.0%	0.0%	100.0%	0.0%	0.0%	100.0%	0.0%	0.0%	0.0%	0.0%	0.0%

Systemwide	FY05-3rdQtr	FY05-4thQtr	FY06-1stQtr	FY06-2ndQtr	FY06-3rdQtr	FY06-4thQtr	FY07-1stQtr	FY07-2ndQtr	FY07-3rdQtr	FY07-4thQtr	FY08-1stQtr	FY08-2ndQtr
Planned	0	0	0	1	0	0	1	0	0	0	0	0
Discharges	1	1	0	1	0	2	1	0	0	0	0	0
Percent	0.0%	0.0%	0.0%	100.0%	0.0%	0.0%	100.0%	0.0%	0.0%	0.0%	0.0%	0.0%

Planned Discharges-Trend Line

Planned Discharges/Level of Care Changes for the last Twelve Quarters

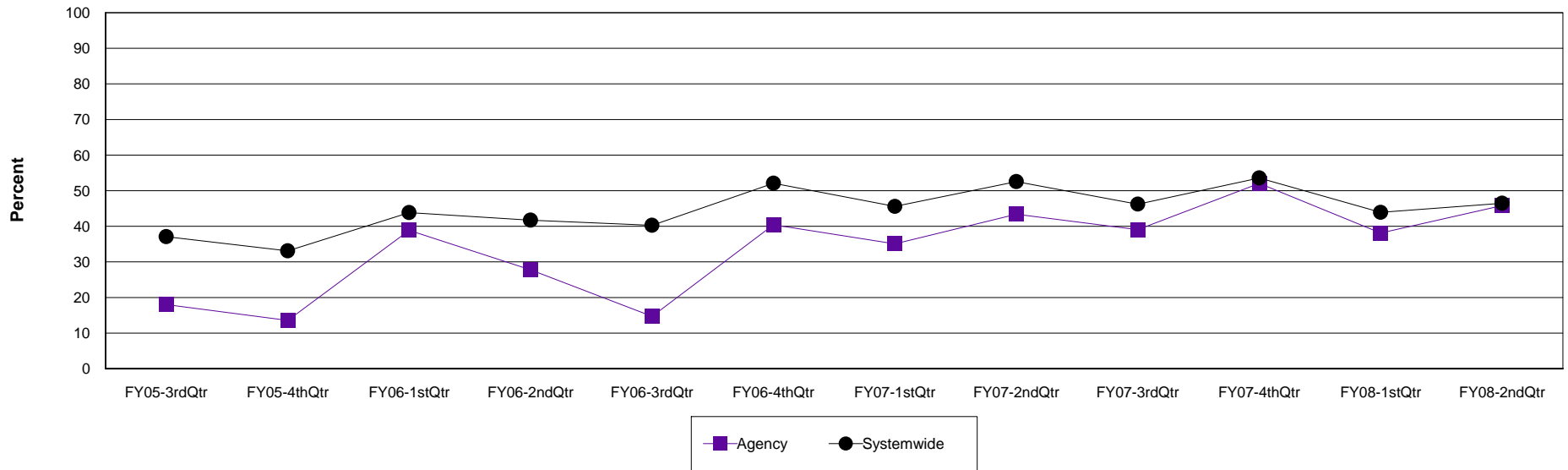
Agency: (640) 12 & 12, INC.

Level of Care: Halfway

Contract Source: All Substance Abuse Contract Sources (PPMR)

Age Group: Adults (18+)

Planned Discharges at 12 & 12, INC.



Agency	FY05-3rdQtr	FY05-4thQtr	FY06-1stQtr	FY06-2ndQtr	FY06-3rdQtr	FY06-4thQtr	FY07-1stQtr	FY07-2ndQtr	FY07-3rdQtr	FY07-4thQtr	FY08-1stQtr	FY08-2ndQtr
Planned	11	8	21	20	10	19	27	23	25	38	24	33
Discharges	61	59	54	72	68	47	77	53	64	73	63	72
Percent	18.0%	13.6%	38.9%	27.8%	14.7%	40.4%	35.1%	43.4%	39.1%	52.1%	38.1%	45.8%

Systemwide	FY05-3rdQtr	FY05-4thQtr	FY06-1stQtr	FY06-2ndQtr	FY06-3rdQtr	FY06-4thQtr	FY07-1stQtr	FY07-2ndQtr	FY07-3rdQtr	FY07-4thQtr	FY08-1stQtr	FY08-2ndQtr
Planned	56	47	57	58	60	62	67	62	55	75	54	59
Discharges	151	142	130	139	149	119	147	118	119	140	123	127
Percent	37.1%	33.1%	43.8%	41.7%	40.3%	52.1%	45.6%	52.5%	46.2%	53.6%	43.9%	46.5%

Planned Discharges-Trend Line

Planned Discharges/Level of Care Changes for the last Twelve Quarters

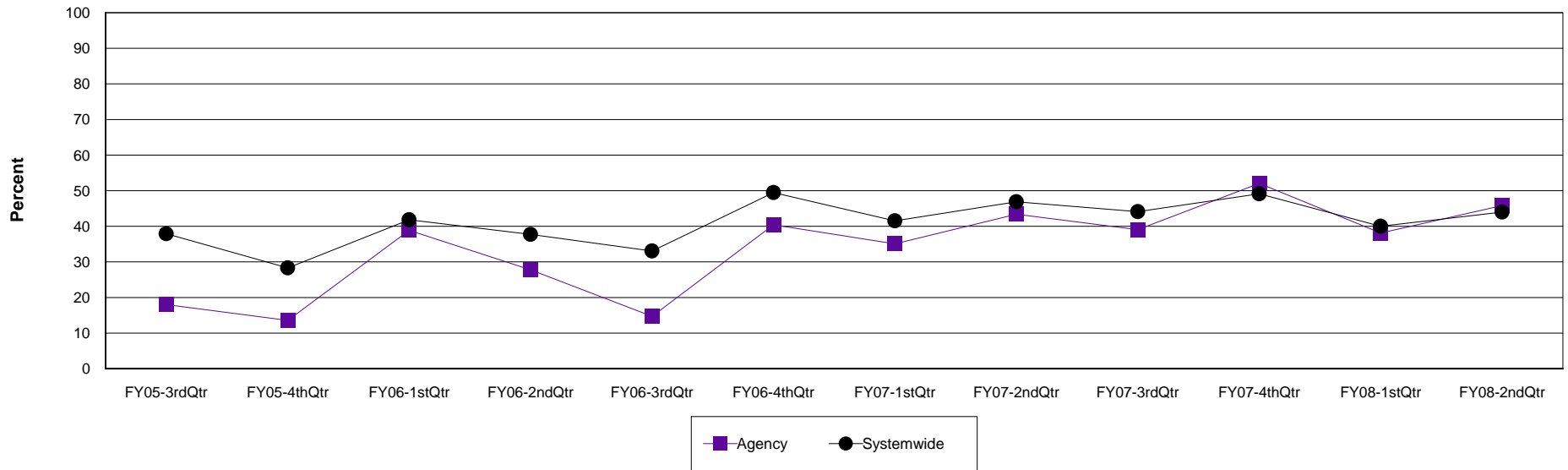
Agency: (640) 12 & 12, INC.

Level of Care: Halfway

Contract Source: All Contract Sources

Age Group: Adults (18+)

Planned Discharges at 12 & 12, INC.



Agency	FY05-3rdQtr	FY05-4thQtr	FY06-1stQtr	FY06-2ndQtr	FY06-3rdQtr	FY06-4thQtr	FY07-1stQtr	FY07-2ndQtr	FY07-3rdQtr	FY07-4thQtr	FY08-1stQtr	FY08-2ndQtr
Planned	11	8	21	20	10	19	27	23	25	38	24	33
Discharges	61	59	54	72	68	47	77	53	64	73	63	72
Percent	18.0%	13.6%	38.9%	27.8%	14.7%	40.4%	35.1%	43.4%	39.1%	52.1%	38.1%	45.8%

Systemwide	FY05-3rdQtr	FY05-4thQtr	FY06-1stQtr	FY06-2ndQtr	FY06-3rdQtr	FY06-4thQtr	FY07-1stQtr	FY07-2ndQtr	FY07-3rdQtr	FY07-4thQtr	FY08-1stQtr	FY08-2ndQtr
Planned	47	32	41	43	40	47	49	45	45	57	40	44
Discharges	124	113	98	114	121	95	118	96	102	116	100	100
Percent	37.9%	28.3%	41.8%	37.7%	33.1%	49.5%	41.5%	46.9%	44.1%	49.1%	40.0%	44.0%

Planned Discharges-Trend Line

Planned Discharges/Level of Care Changes for the last Twelve Quarters

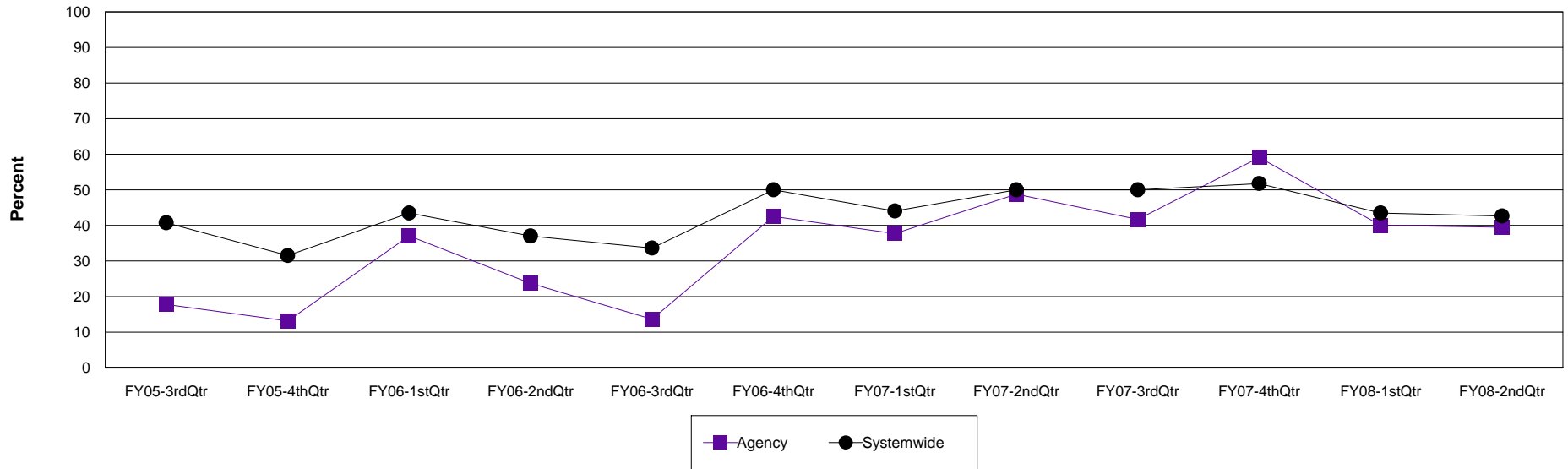
Agency: (640) 12 & 12, INC.

Level of Care: Halfway

Contract Source: (02) ALCOHOL/DRUG

Age Group: Adults (18+)

Planned Discharges at 12 & 12, INC.



Agency	FY05-3rdQtr	FY05-4thQtr	FY06-1stQtr	FY06-2ndQtr	FY06-3rdQtr	FY06-4thQtr	FY07-1stQtr	FY07-2ndQtr	FY07-3rdQtr	FY07-4thQtr	FY08-1stQtr	FY08-2ndQtr
Planned	8	5	10	14	9	17	26	20	15	26	14	15
Discharges	45	38	27	59	66	40	69	41	36	44	35	38
Percent	17.8%	13.2%	37.0%	23.7%	13.6%	42.5%	37.7%	48.8%	41.7%	59.1%	40.0%	39.5%

Systemwide	FY05-3rdQtr	FY05-4thQtr	FY06-1stQtr	FY06-2ndQtr	FY06-3rdQtr	FY06-4thQtr	FY07-1stQtr	FY07-2ndQtr	FY07-3rdQtr	FY07-4thQtr	FY08-1stQtr	FY08-2ndQtr
Planned	44	29	30	37	38	42	48	39	35	44	30	26
Discharges	108	92	69	100	113	84	109	78	70	85	69	61
Percent	40.7%	31.5%	43.5%	37.0%	33.6%	50.0%	44.0%	50.0%	50.0%	51.8%	43.5%	42.6%

Planned Discharges-Trend Line

Planned Discharges/Level of Care Changes for the last Twelve Quarters

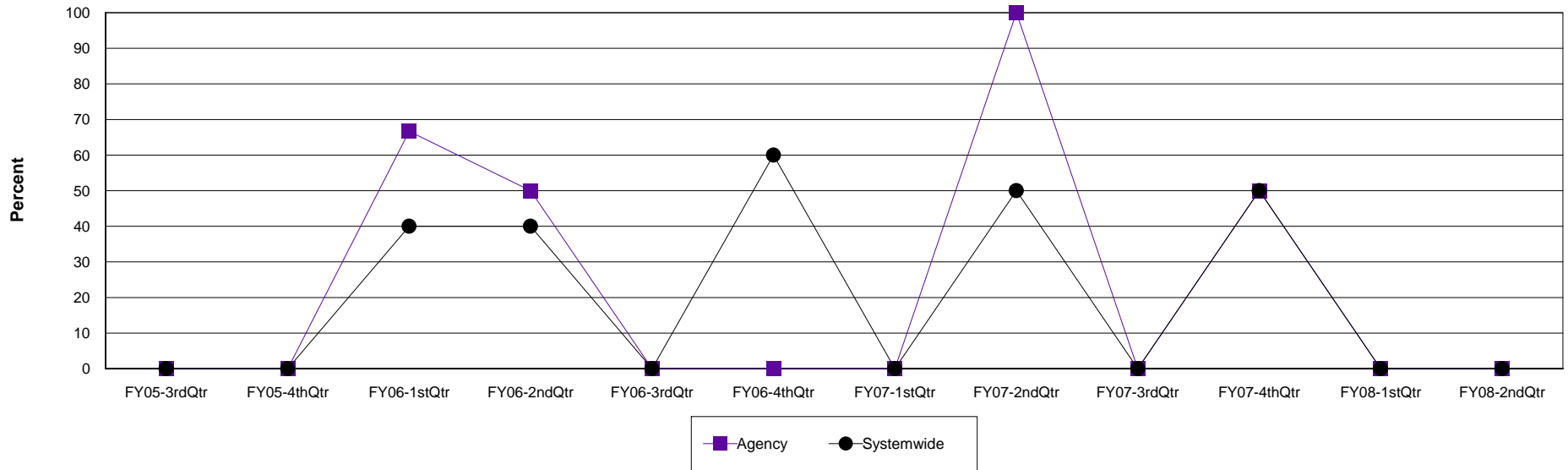
Agency: (640) 12 & 12, INC.

Level of Care: Halfway

Contract Source: (20) DRUG COURT

Age Group: Adults (18+)

Planned Discharges at 12 & 12, INC.



Agency	FY05-3rdQtr	FY05-4thQtr	FY06-1stQtr	FY06-2ndQtr	FY06-3rdQtr	FY06-4thQtr	FY07-1stQtr	FY07-2ndQtr	FY07-3rdQtr	FY07-4thQtr	FY08-1stQtr	FY08-2ndQtr
Planned	0	0	2	2	0	0	0	1	0	2	0	0
Discharges	0	1	3	4	0	0	0	1	2	4	0	1
Percent	0.0%	0.0%	66.7%	50.0%	0.0%	0.0%	0.0%	100.0%	0.0%	50.0%	0.0%	0.0%

Systemwide	FY05-3rdQtr	FY05-4thQtr	FY06-1stQtr	FY06-2ndQtr	FY06-3rdQtr	FY06-4thQtr	FY07-1stQtr	FY07-2ndQtr	FY07-3rdQtr	FY07-4thQtr	FY08-1stQtr	FY08-2ndQtr
Planned	0	0	2	2	0	3	0	4	0	3	0	0
Discharges	0	1	5	5	5	5	1	8	6	6	4	6
Percent	0.0%	0.0%	40.0%	40.0%	0.0%	60.0%	0.0%	50.0%	0.0%	50.0%	0.0%	0.0%

Planned Discharges-Trend Line

Planned Discharges/Level of Care Changes for the last Twelve Quarters

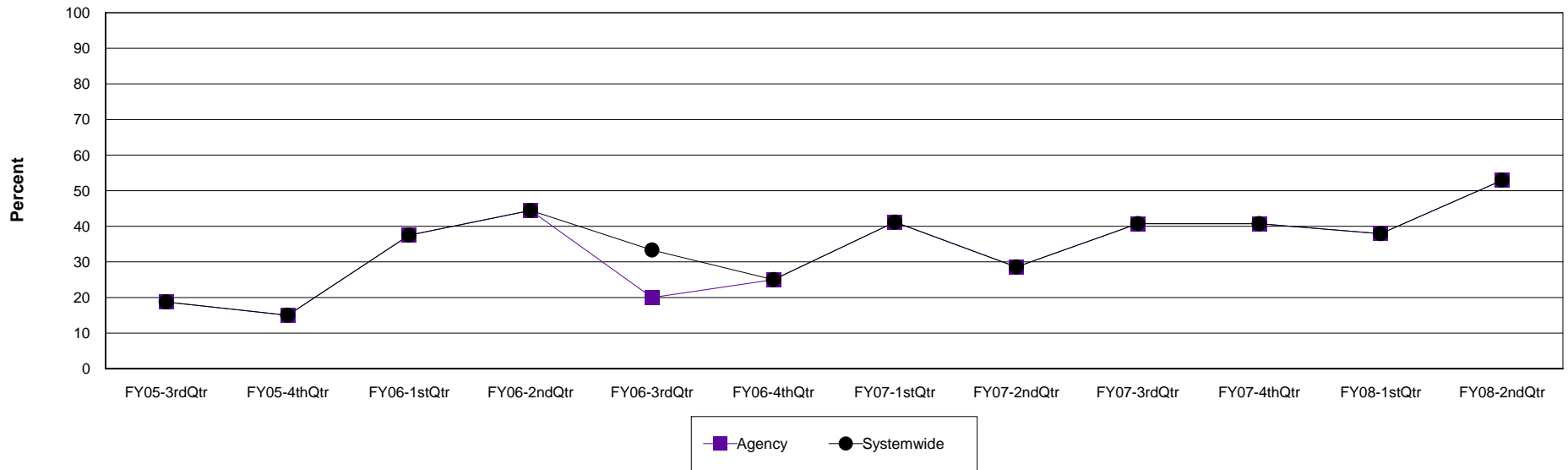
Agency: (640) 12 & 12, INC.

Level of Care: Halfway

Contract Source: (21) ALCOHOL/DRUG SPECIALIZED PROGRAMS

Age Group: Adults (18+)

Planned Discharges at 12 & 12, INC.



Agency	FY05-3rdQtr	FY05-4thQtr	FY06-1stQtr	FY06-2ndQtr	FY06-3rdQtr	FY06-4thQtr	FY07-1stQtr	FY07-2ndQtr	FY07-3rdQtr	FY07-4thQtr	FY08-1stQtr	FY08-2ndQtr
Planned	3	3	9	4	1	2	7	4	11	11	11	18
Discharges	16	20	24	9	5	8	17	14	27	27	29	34
Percent	18.8%	15.0%	37.5%	44.4%	20.0%	25.0%	41.2%	28.6%	40.7%	40.7%	37.9%	52.9%

Systemwide	FY05-3rdQtr	FY05-4thQtr	FY06-1stQtr	FY06-2ndQtr	FY06-3rdQtr	FY06-4thQtr	FY07-1stQtr	FY07-2ndQtr	FY07-3rdQtr	FY07-4thQtr	FY08-1stQtr	FY08-2ndQtr
Planned	3	3	9	4	2	2	7	4	11	11	11	18
Discharges	16	20	24	9	6	8	17	14	27	27	29	34
Percent	18.8%	15.0%	37.5%	44.4%	33.3%	25.0%	41.2%	28.6%	40.7%	40.7%	37.9%	52.9%

Planned Discharges-Trend Line

Planned Discharges/Level of Care Changes for the last Twelve Quarters

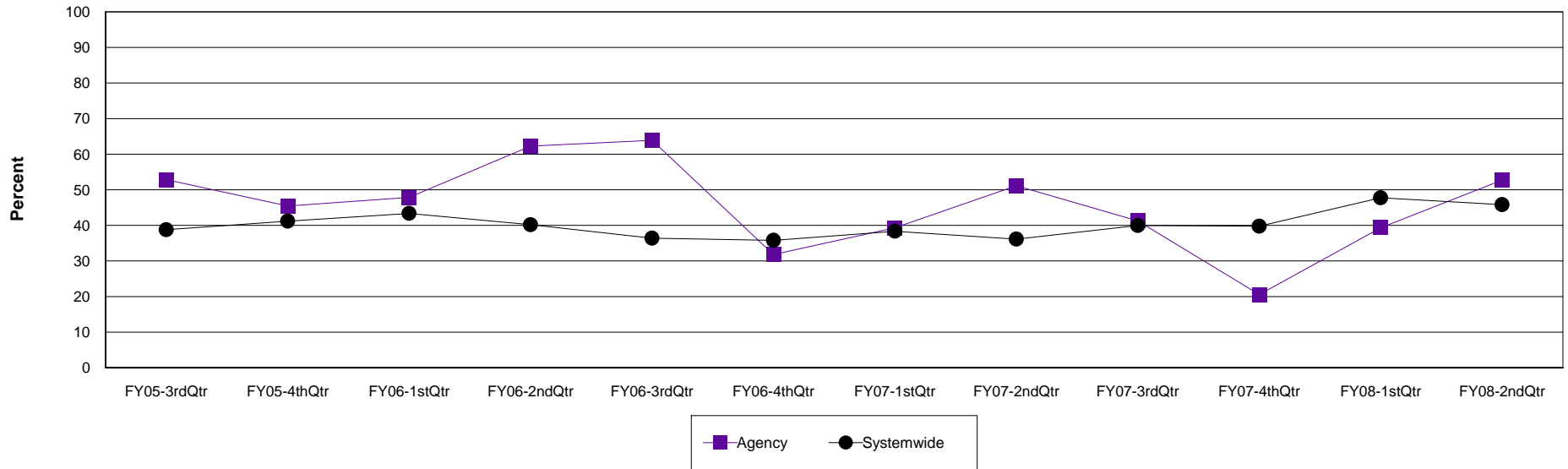
Agency: (640) 12 & 12, INC.

Level of Care: Outpatient

Contract Source: All Substance Abuse Contract Sources (PPMR)

Age Group: Adults (18+)

Planned Discharges at 12 & 12, INC.



Agency	FY05-3rdQtr	FY05-4thQtr	FY06-1stQtr	FY06-2ndQtr	FY06-3rdQtr	FY06-4thQtr	FY07-1stQtr	FY07-2ndQtr	FY07-3rdQtr	FY07-4thQtr	FY08-1stQtr	FY08-2ndQtr
Planned	37	35	56	33	46	28	46	45	26	15	24	29
Discharges	70	77	117	53	72	88	117	88	63	73	61	55
Percent	52.9%	45.5%	47.9%	62.3%	63.9%	31.8%	39.3%	51.1%	41.3%	20.5%	39.3%	52.7%

Systemwide	FY05-3rdQtr	FY05-4thQtr	FY06-1stQtr	FY06-2ndQtr	FY06-3rdQtr	FY06-4thQtr	FY07-1stQtr	FY07-2ndQtr	FY07-3rdQtr	FY07-4thQtr	FY08-1stQtr	FY08-2ndQtr
Planned	902	995	1,010	935	701	731	837	751	927	952	1,017	734
Discharges	2,326	2,415	2,329	2,327	1,926	2,042	2,182	2,079	2,320	2,394	2,130	1,602
Percent	38.8%	41.2%	43.4%	40.2%	36.4%	35.8%	38.4%	36.1%	40.0%	39.8%	47.7%	45.8%

Planned Discharges-Trend Line

Planned Discharges/Level of Care Changes for the last Twelve Quarters

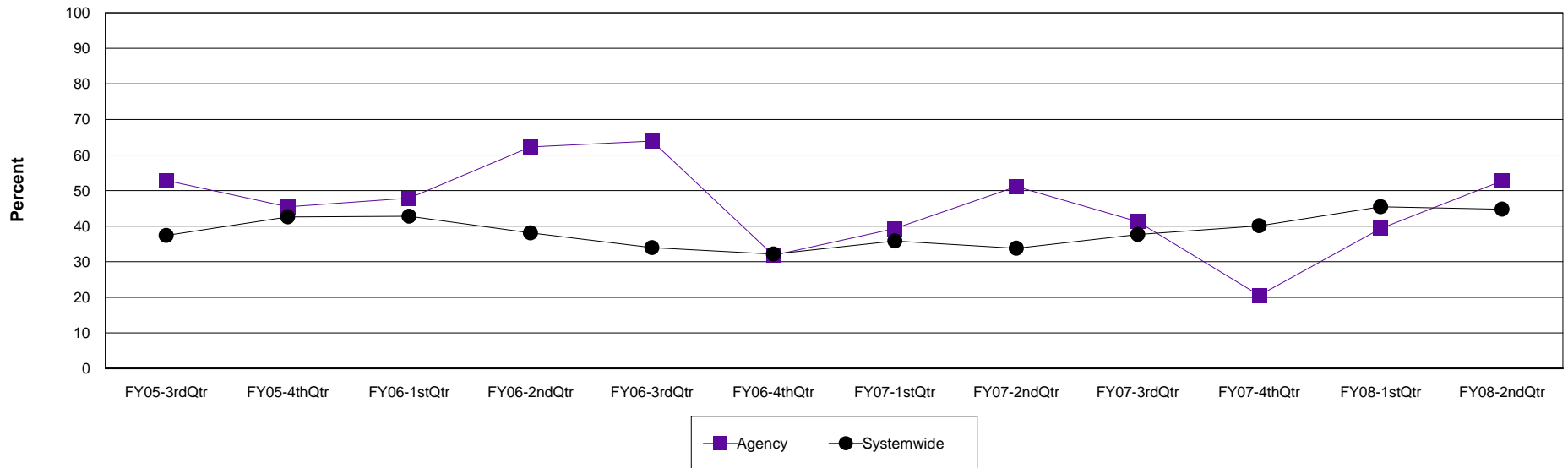
Agency: (640) 12 & 12, INC.

Level of Care: Outpatient

Contract Source: All Contract Sources

Age Group: Adults (18+)

Planned Discharges at 12 & 12, INC.



Agency	FY05-3rdQtr	FY05-4thQtr	FY06-1stQtr	FY06-2ndQtr	FY06-3rdQtr	FY06-4thQtr	FY07-1stQtr	FY07-2ndQtr	FY07-3rdQtr	FY07-4thQtr	FY08-1stQtr	FY08-2ndQtr
Planned	37	35	56	33	46	28	46	45	26	15	24	29
Discharges	70	77	117	53	72	88	117	88	63	73	61	55
Percent	52.9%	45.5%	47.9%	62.3%	63.9%	31.8%	39.3%	51.1%	41.3%	20.5%	39.3%	52.7%

Systemwide	FY05-3rdQtr	FY05-4thQtr	FY06-1stQtr	FY06-2ndQtr	FY06-3rdQtr	FY06-4thQtr	FY07-1stQtr	FY07-2ndQtr	FY07-3rdQtr	FY07-4thQtr	FY08-1stQtr	FY08-2ndQtr
Planned	610	717	727	653	511	473	596	534	668	719	726	547
Discharges	1,632	1,683	1,700	1,714	1,505	1,471	1,663	1,581	1,774	1,793	1,598	1,222
Percent	37.4%	42.6%	42.8%	38.1%	34.0%	32.2%	35.8%	33.8%	37.7%	40.1%	45.4%	44.8%

Planned Discharges-Trend Line

Planned Discharges/Level of Care Changes for the last Twelve Quarters

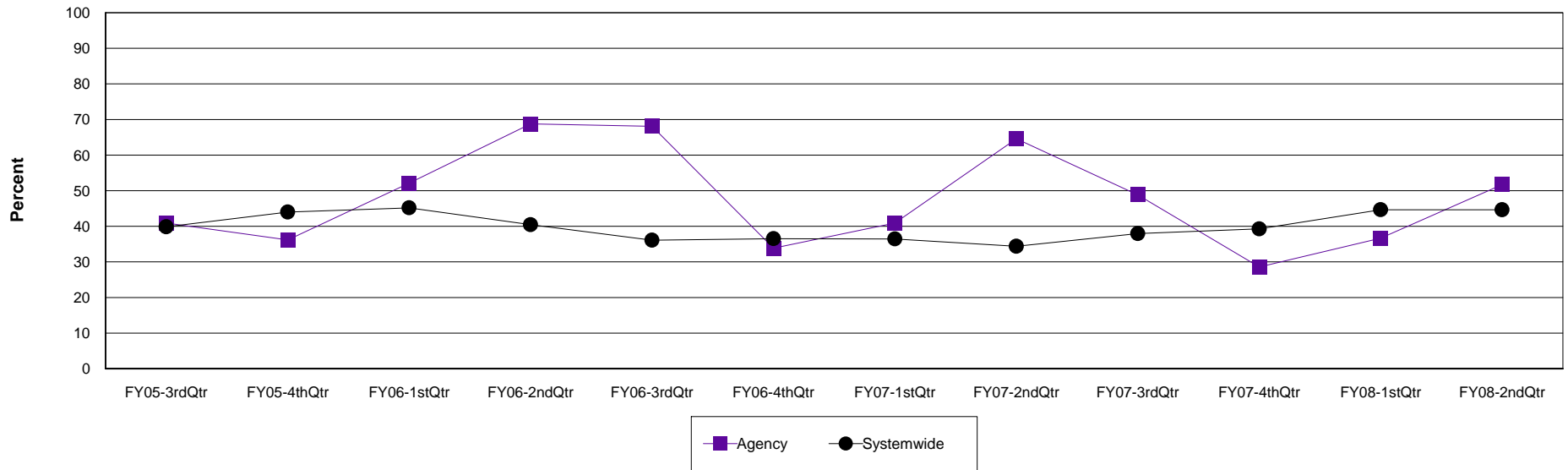
Agency: (640) 12 & 12, INC.

Level of Care: Outpatient

Contract Source: (02) ALCOHOL/DRUG

Age Group: Adults (18+)

Planned Discharges at 12 & 12, INC.



Agency	FY05-3rdQtr	FY05-4thQtr	FY06-1stQtr	FY06-2ndQtr	FY06-3rdQtr	FY06-4thQtr	FY07-1stQtr	FY07-2ndQtr	FY07-3rdQtr	FY07-4thQtr	FY08-1stQtr	FY08-2ndQtr
Planned	18	17	37	22	32	21	27	31	21	12	11	15
Discharges	44	47	71	32	47	62	66	48	43	42	30	29
Percent	40.9%	36.2%	52.1%	68.8%	68.1%	33.9%	40.9%	64.6%	48.8%	28.6%	36.7%	51.7%

Systemwide	FY05-3rdQtr	FY05-4thQtr	FY06-1stQtr	FY06-2ndQtr	FY06-3rdQtr	FY06-4thQtr	FY07-1stQtr	FY07-2ndQtr	FY07-3rdQtr	FY07-4thQtr	FY08-1stQtr	FY08-2ndQtr
Planned	456	550	569	500	370	350	370	306	380	379	372	305
Discharges	1,144	1,250	1,259	1,236	1,025	958	1,015	890	1,001	965	833	683
Percent	39.9%	44.0%	45.2%	40.5%	36.1%	36.5%	36.5%	34.4%	38.0%	39.3%	44.7%	44.7%

Planned Discharges-Trend Line

Planned Discharges/Level of Care Changes for the last Twelve Quarters

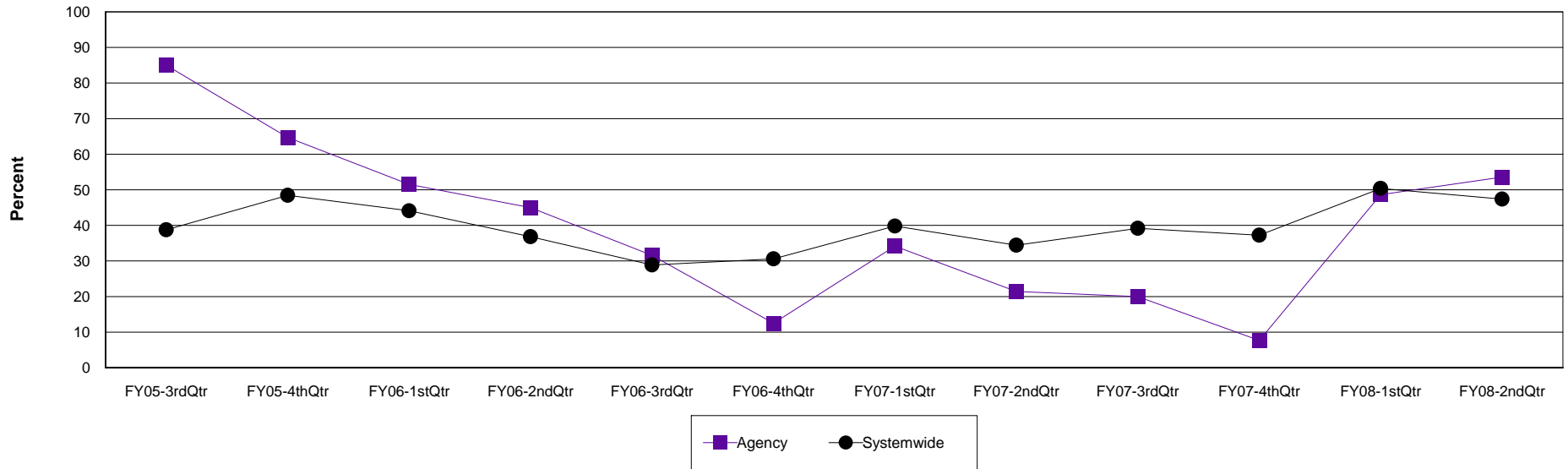
Agency: (640) 12 & 12, INC.

Level of Care: Outpatient

Contract Source: (20) DRUG COURT

Age Group: Adults (18+)

Planned Discharges at 12 & 12, INC.



Agency	FY05-3rdQtr	FY05-4thQtr	FY06-1stQtr	FY06-2ndQtr	FY06-3rdQtr	FY06-4thQtr	FY07-1stQtr	FY07-2ndQtr	FY07-3rdQtr	FY07-4thQtr	FY08-1stQtr	FY08-2ndQtr
Planned	17	11	17	9	6	2	14	6	4	2	18	15
Discharges	20	17	33	20	19	16	41	28	20	26	37	28
Percent	85.0%	64.7%	51.5%	45.0%	31.6%	12.5%	34.1%	21.4%	20.0%	7.7%	48.6%	53.6%

Systemwide	FY05-3rdQtr	FY05-4thQtr	FY06-1stQtr	FY06-2ndQtr	FY06-3rdQtr	FY06-4thQtr	FY07-1stQtr	FY07-2ndQtr	FY07-3rdQtr	FY07-4thQtr	FY08-1stQtr	FY08-2ndQtr
Planned	100	124	157	144	106	115	207	167	244	232	318	190
Discharges	258	256	356	391	367	376	520	485	623	623	631	401
Percent	38.8%	48.4%	44.1%	36.8%	28.9%	30.6%	39.8%	34.4%	39.2%	37.2%	50.4%	47.4%

Planned Discharges-Trend Line

Planned Discharges/Level of Care Changes for the last Twelve Quarters

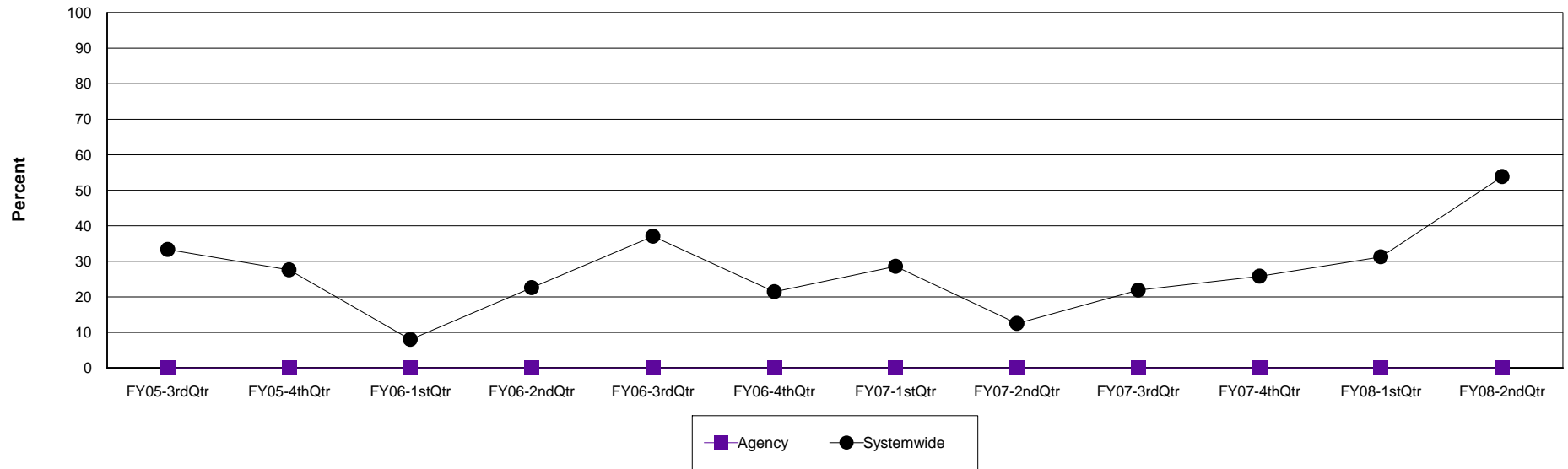
Agency: (640) 12 & 12, INC.

Level of Care: Outpatient

Contract Source: (21) ALCOHOL/DRUG SPECIALIZED PROGRAMS

Age Group: Adults (18+)

Planned Discharges at 12 & 12, INC.



Agency	FY05-3rdQtr	FY05-4thQtr	FY06-1stQtr	FY06-2ndQtr	FY06-3rdQtr	FY06-4thQtr	FY07-1stQtr	FY07-2ndQtr	FY07-3rdQtr	FY07-4thQtr	FY08-1stQtr	FY08-2ndQtr
Planned	0	0	0	0	0	0	0	0	0	0	0	0
Discharges	0	0	1	0	1	0	0	0	0	1	0	1
Percent	0.0%	0.0%	0.0%	0.0%	0.0%	0.0%	0.0%	0.0%	0.0%	0.0%	0.0%	0.0%

Systemwide	FY05-3rdQtr	FY05-4thQtr	FY06-1stQtr	FY06-2ndQtr	FY06-3rdQtr	FY06-4thQtr	FY07-1stQtr	FY07-2ndQtr	FY07-3rdQtr	FY07-4thQtr	FY08-1stQtr	FY08-2ndQtr
Planned	8	8	2	7	20	6	6	8	7	8	5	7
Discharges	24	29	25	31	54	28	21	64	32	31	16	13
Percent	33.3%	27.6%	8.0%	22.6%	37.0%	21.4%	28.6%	12.5%	21.9%	25.8%	31.3%	53.8%

Planned Discharges-Trend Line

Planned Discharges/Level of Care Changes for the last Twelve Quarters

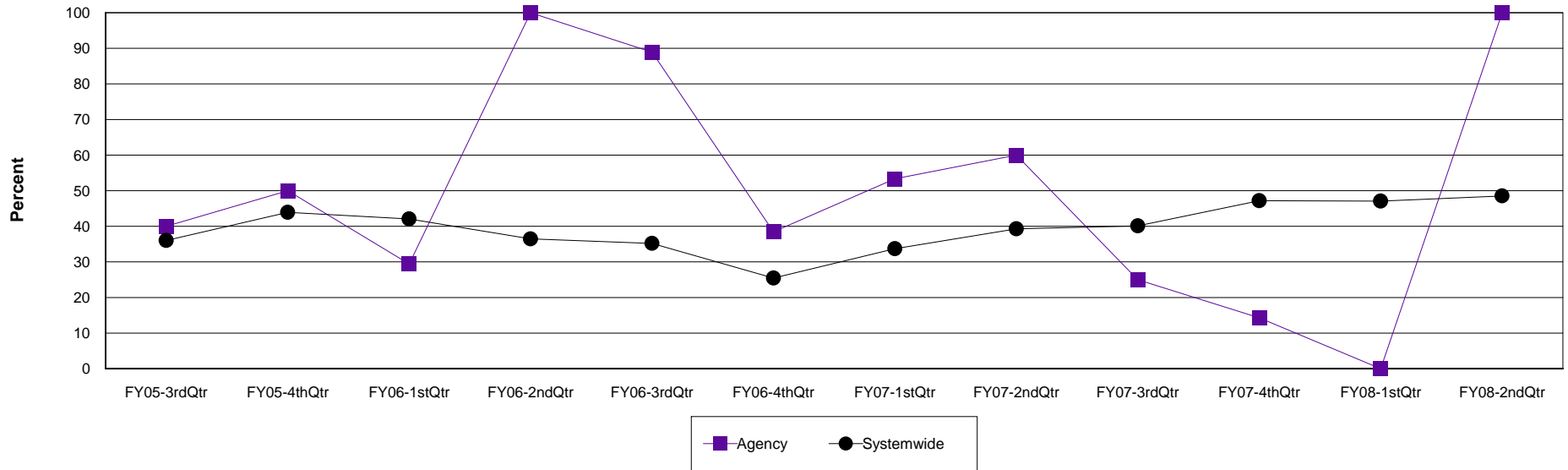
Agency: (640) 12 & 12, INC.

Level of Care: Outpatient

Contract Source: (29) PROBATION AND PAROLE

Age Group: Adults (18+)

Planned Discharges at 12 & 12, INC.



Agency	FY05-3rdQtr	FY05-4thQtr	FY06-1stQtr	FY06-2ndQtr	FY06-3rdQtr	FY06-4thQtr	FY07-1stQtr	FY07-2ndQtr	FY07-3rdQtr	FY07-4thQtr	FY08-1stQtr	FY08-2ndQtr
Planned	4	9	5	3	8	5	8	9	1	1	0	3
Discharges	10	18	17	3	9	13	15	15	4	7	0	3
Percent	40.0%	50.0%	29.4%	100.0%	88.9%	38.5%	53.3%	60.0%	25.0%	14.3%	0.0%	100.0%

Systemwide	FY05-3rdQtr	FY05-4thQtr	FY06-1stQtr	FY06-2ndQtr	FY06-3rdQtr	FY06-4thQtr	FY07-1stQtr	FY07-2ndQtr	FY07-3rdQtr	FY07-4thQtr	FY08-1stQtr	FY08-2ndQtr
Planned	129	141	106	101	88	69	92	121	122	177	145	116
Discharges	358	321	252	277	250	271	273	308	304	375	308	239
Percent	36.0%	43.9%	42.1%	36.5%	35.2%	25.5%	33.7%	39.3%	40.1%	47.2%	47.1%	48.5%

Planned Discharges-Trend Line

Planned Discharges/Level of Care Changes for the last Twelve Quarters

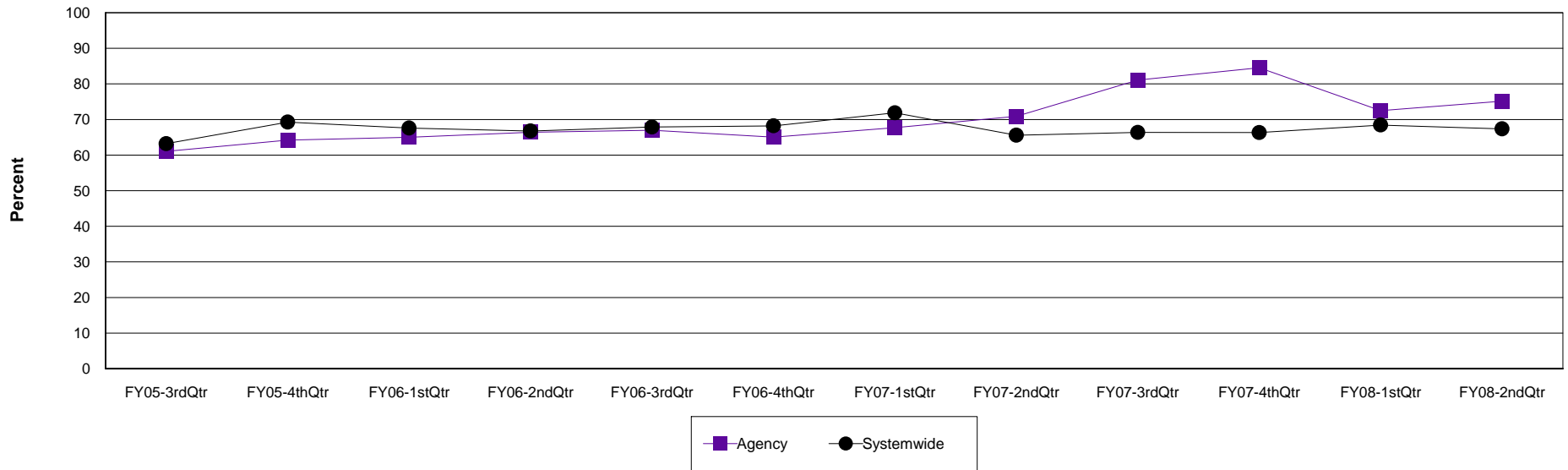
Agency: (640) 12 & 12, INC.

Level of Care: Residential Treatment

Contract Source: All Substance Abuse Contract Sources (PPMR)

Age Group: Adults (18+)

Planned Discharges at 12 & 12, INC.



Agency	FY05-3rdQtr	FY05-4thQtr	FY06-1stQtr	FY06-2ndQtr	FY06-3rdQtr	FY06-4thQtr	FY07-1stQtr	FY07-2ndQtr	FY07-3rdQtr	FY07-4thQtr	FY08-1stQtr	FY08-2ndQtr
Planned	80	79	91	91	67	67	88	78	107	104	87	115
Discharges	131	123	140	137	100	103	130	110	132	123	120	153
Percent	61.1%	64.2%	65.0%	66.4%	67.0%	65.0%	67.7%	70.9%	81.1%	84.6%	72.5%	75.2%

Systemwide	FY05-3rdQtr	FY05-4thQtr	FY06-1stQtr	FY06-2ndQtr	FY06-3rdQtr	FY06-4thQtr	FY07-1stQtr	FY07-2ndQtr	FY07-3rdQtr	FY07-4thQtr	FY08-1stQtr	FY08-2ndQtr
Planned	560	660	603	641	617	588	654	577	574	646	642	611
Discharges	886	953	892	960	909	862	910	880	865	974	938	907
Percent	63.2%	69.3%	67.6%	66.8%	67.9%	68.2%	71.9%	65.6%	66.4%	66.3%	68.4%	67.4%

Planned Discharges-Trend Line

Planned Discharges/Level of Care Changes for the last Twelve Quarters

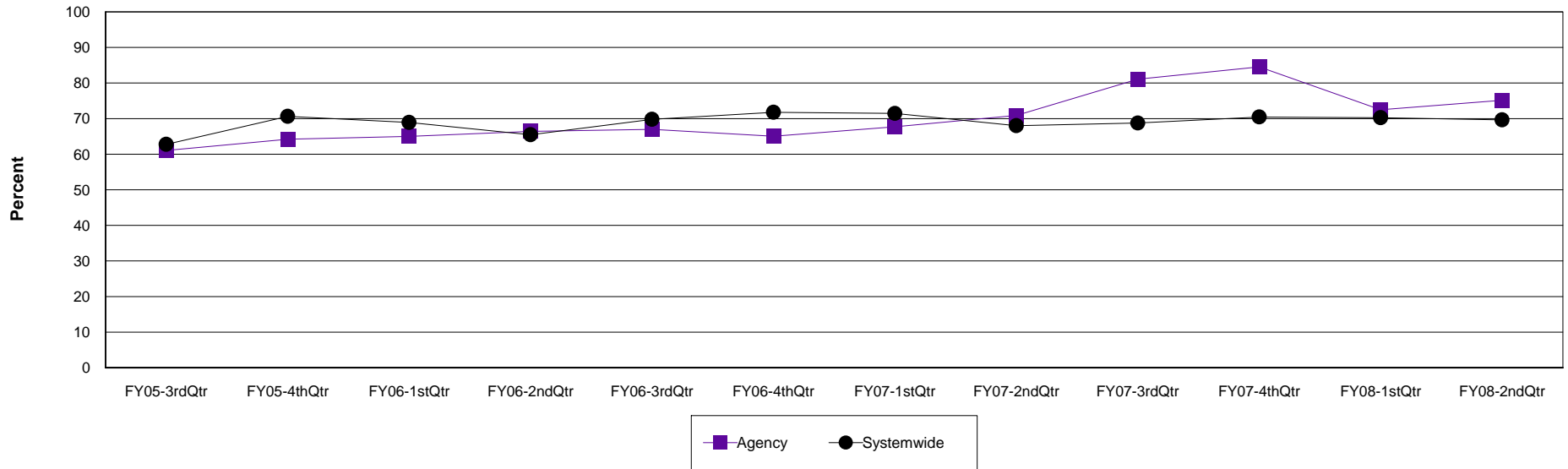
Agency: (640) 12 & 12, INC.

Level of Care: Residential Treatment

Contract Source: All Contract Sources

Age Group: Adults (18+)

Planned Discharges at 12 & 12, INC.



Agency	FY05-3rdQtr	FY05-4thQtr	FY06-1stQtr	FY06-2ndQtr	FY06-3rdQtr	FY06-4thQtr	FY07-1stQtr	FY07-2ndQtr	FY07-3rdQtr	FY07-4thQtr	FY08-1stQtr	FY08-2ndQtr
Planned	80	79	91	91	67	67	88	78	107	104	87	115
Discharges	131	123	140	137	100	103	130	110	132	123	120	153
Percent	61.1%	64.2%	65.0%	66.4%	67.0%	65.0%	67.7%	70.9%	81.1%	84.6%	72.5%	75.2%

Systemwide	FY05-3rdQtr	FY05-4thQtr	FY06-1stQtr	FY06-2ndQtr	FY06-3rdQtr	FY06-4thQtr	FY07-1stQtr	FY07-2ndQtr	FY07-3rdQtr	FY07-4thQtr	FY08-1stQtr	FY08-2ndQtr
Planned	457	536	470	491	462	450	503	440	440	508	503	530
Discharges	728	759	682	750	662	627	704	647	640	721	716	761
Percent	62.8%	70.6%	68.9%	65.5%	69.8%	71.8%	71.4%	68.0%	68.8%	70.5%	70.3%	69.6%

Planned Discharges-Trend Line

Planned Discharges/Level of Care Changes for the last Twelve Quarters

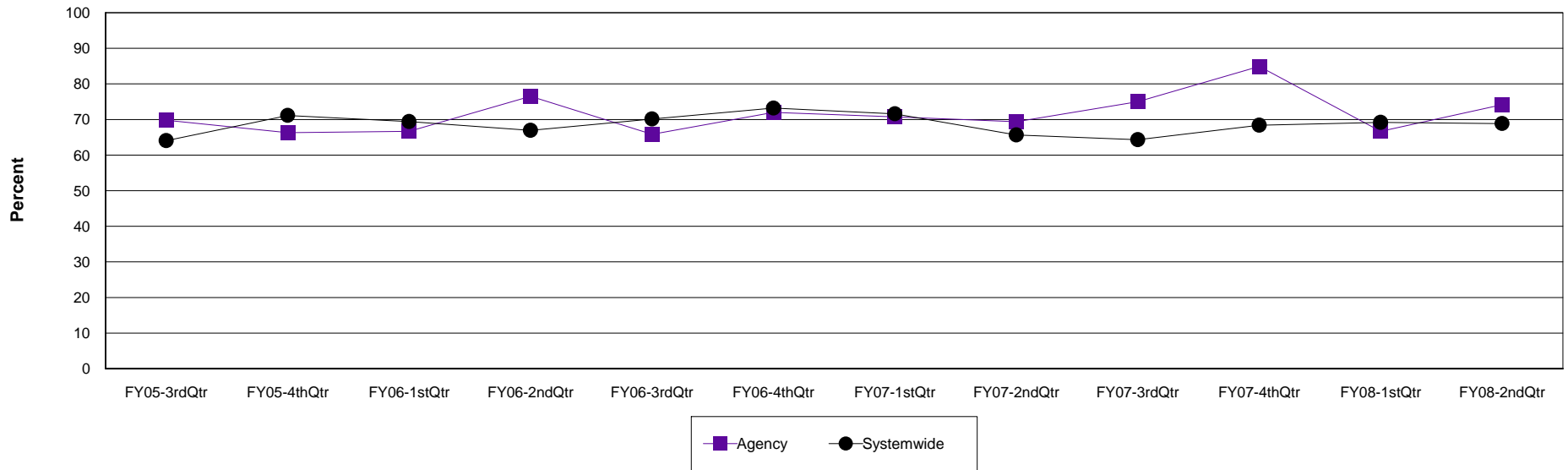
Agency: (640) 12 & 12, INC.

Level of Care: Residential Treatment

Contract Source: (02) ALCOHOL/DRUG

Age Group: Adults (18+)

Planned Discharges at 12 & 12, INC.



Agency	FY05-3rdQtr	FY05-4thQtr	FY06-1stQtr	FY06-2ndQtr	FY06-3rdQtr	FY06-4thQtr	FY07-1stQtr	FY07-2ndQtr	FY07-3rdQtr	FY07-4thQtr	FY08-1stQtr	FY08-2ndQtr
Planned	67	63	68	75	52	54	58	34	42	45	38	66
Discharges	96	95	102	98	79	75	82	49	56	53	57	89
Percent	69.8%	66.3%	66.7%	76.5%	65.8%	72.0%	70.7%	69.4%	75.0%	84.9%	66.7%	74.2%

Systemwide	FY05-3rdQtr	FY05-4thQtr	FY06-1stQtr	FY06-2ndQtr	FY06-3rdQtr	FY06-4thQtr	FY07-1stQtr	FY07-2ndQtr	FY07-3rdQtr	FY07-4thQtr	FY08-1stQtr	FY08-2ndQtr
Planned	444	520	447	474	446	437	426	327	312	398	431	460
Discharges	693	731	644	708	636	597	595	498	485	582	623	668
Percent	64.1%	71.1%	69.4%	66.9%	70.1%	73.2%	71.6%	65.7%	64.3%	68.4%	69.2%	68.9%

Planned Discharges-Trend Line

Planned Discharges/Level of Care Changes for the last Twelve Quarters

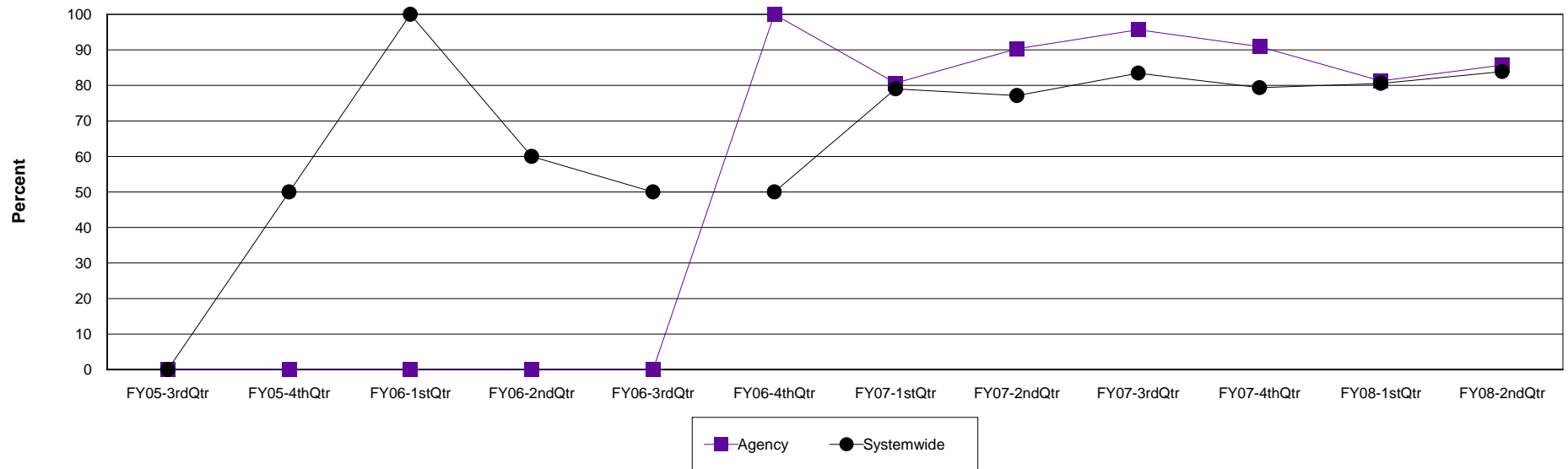
Agency: (640) 12 & 12, INC.

Level of Care: Residential Treatment

Contract Source: (20) DRUG COURT

Age Group: Adults (18+)

Planned Discharges at 12 & 12, INC.



Agency	FY05-3rdQtr	FY05-4thQtr	FY06-1stQtr	FY06-2ndQtr	FY06-3rdQtr	FY06-4thQtr	FY07-1stQtr	FY07-2ndQtr	FY07-3rdQtr	FY07-4thQtr	FY08-1stQtr	FY08-2ndQtr
Planned	0	0	0	0	0	1	25	28	44	40	39	36
Discharges	0	0	0	1	0	1	31	31	46	44	48	42
Percent	0.0%	0.0%	0.0%	0.0%	0.0%	100.0%	80.6%	90.3%	95.7%	90.9%	81.3%	85.7%

Systemwide	FY05-3rdQtr	FY05-4thQtr	FY06-1stQtr	FY06-2ndQtr	FY06-3rdQtr	FY06-4thQtr	FY07-1stQtr	FY07-2ndQtr	FY07-3rdQtr	FY07-4thQtr	FY08-1stQtr	FY08-2ndQtr
Planned	0	1	1	3	3	3	113	118	121	123	87	78
Discharges	0	2	1	5	6	6	143	153	145	155	108	93
Percent	0.0%	50.0%	100.0%	60.0%	50.0%	50.0%	79.0%	77.1%	83.4%	79.4%	80.6%	83.9%

Planned Discharges-Trend Line

Planned Discharges/Level of Care Changes for the last Twelve Quarters

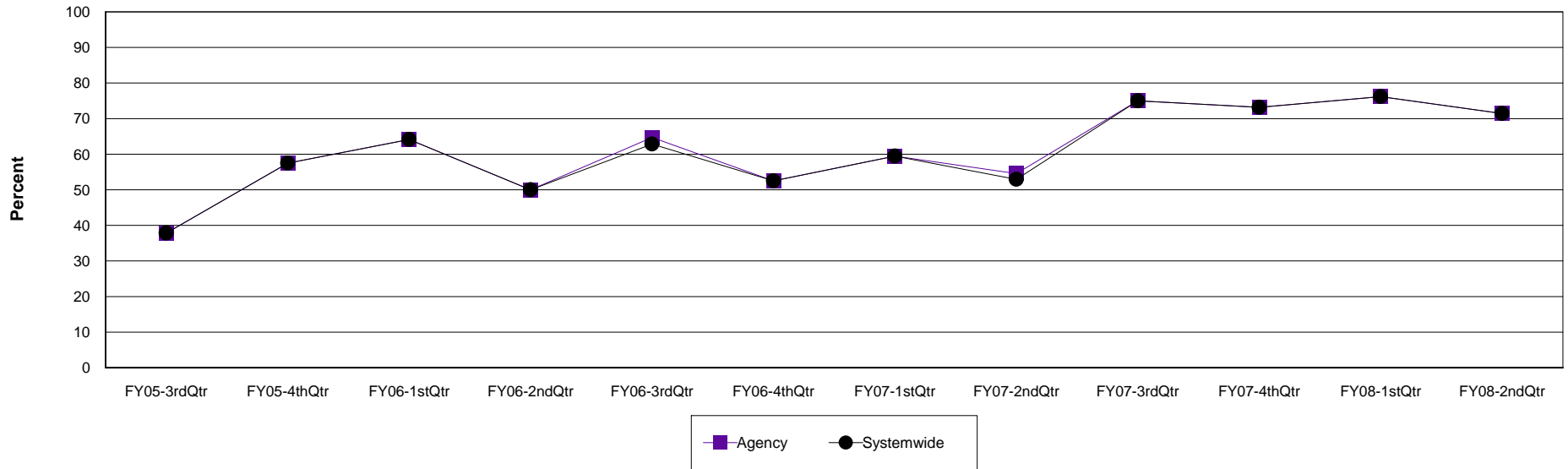
Agency: (640) 12 & 12, INC.

Level of Care: Residential Treatment

Contract Source: (21) ALCOHOL/DRUG SPECIALIZED PROGRAMS

Age Group: Adults (18+)

Planned Discharges at 12 & 12, INC.



Agency	FY05-3rdQtr	FY05-4thQtr	FY06-1stQtr	FY06-2ndQtr	FY06-3rdQtr	FY06-4thQtr	FY07-1stQtr	FY07-2ndQtr	FY07-3rdQtr	FY07-4thQtr	FY08-1stQtr	FY08-2ndQtr
Planned	14	23	34	28	22	21	22	18	30	30	32	35
Discharges	37	40	53	56	34	40	37	33	40	41	42	49
Percent	37.8%	57.5%	64.2%	50.0%	64.7%	52.5%	59.5%	54.5%	75.0%	73.2%	76.2%	71.4%

Systemwide	FY05-3rdQtr	FY05-4thQtr	FY06-1stQtr	FY06-2ndQtr	FY06-3rdQtr	FY06-4thQtr	FY07-1stQtr	FY07-2ndQtr	FY07-3rdQtr	FY07-4thQtr	FY08-1stQtr	FY08-2ndQtr
Planned	14	23	34	28	22	21	22	18	30	30	32	35
Discharges	37	40	53	56	35	40	37	34	40	41	42	49
Percent	37.8%	57.5%	64.2%	50.0%	62.9%	52.5%	59.5%	52.9%	75.0%	73.2%	76.2%	71.4%

Planned Discharges-Trend Line

Planned Discharges/Level of Care Changes for the last Twelve Quarters

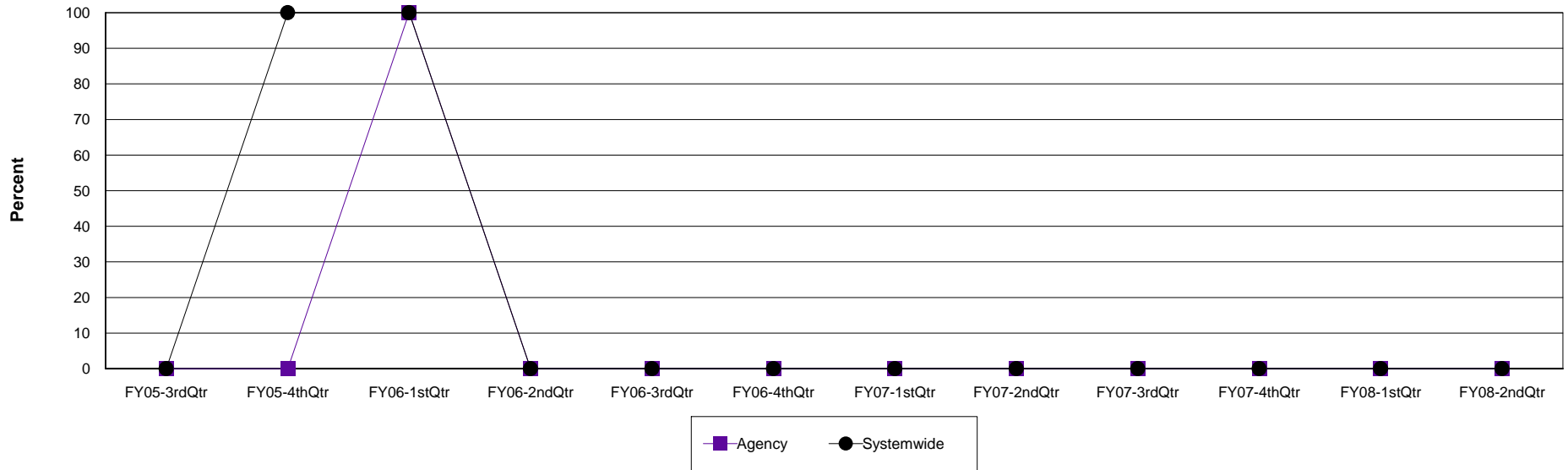
Agency: (640) 12 & 12, INC.

Level of Care: Detox

Contract Source: All Substance Abuse Contract Sources (PPMR)

Age Group: Children (0-17)

Planned Discharges at 12 & 12, INC.



Agency	FY05-3rdQtr	FY05-4thQtr	FY06-1stQtr	FY06-2ndQtr	FY06-3rdQtr	FY06-4thQtr	FY07-1stQtr	FY07-2ndQtr	FY07-3rdQtr	FY07-4thQtr	FY08-1stQtr	FY08-2ndQtr
Planned	0	0	1	0	0	0	0	0	0	0	0	0
Discharges	0	0	1	0	0	0	0	0	0	0	0	0
Percent	0.0%	0.0%	100.0%	0.0%	0.0%	0.0%	0.0%	0.0%	0.0%	0.0%	0.0%	0.0%

Systemwide	FY05-3rdQtr	FY05-4thQtr	FY06-1stQtr	FY06-2ndQtr	FY06-3rdQtr	FY06-4thQtr	FY07-1stQtr	FY07-2ndQtr	FY07-3rdQtr	FY07-4thQtr	FY08-1stQtr	FY08-2ndQtr
Planned	0	4	1	0	0	0	0	0	0	0	0	0
Discharges	1	4	1	0	0	0	0	0	0	0	0	0
Percent	0.0%	100.0%	100.0%	0.0%	0.0%	0.0%	0.0%	0.0%	0.0%	0.0%	0.0%	0.0%

Planned Discharges-Trend Line

Planned Discharges/Level of Care Changes for the last Twelve Quarters

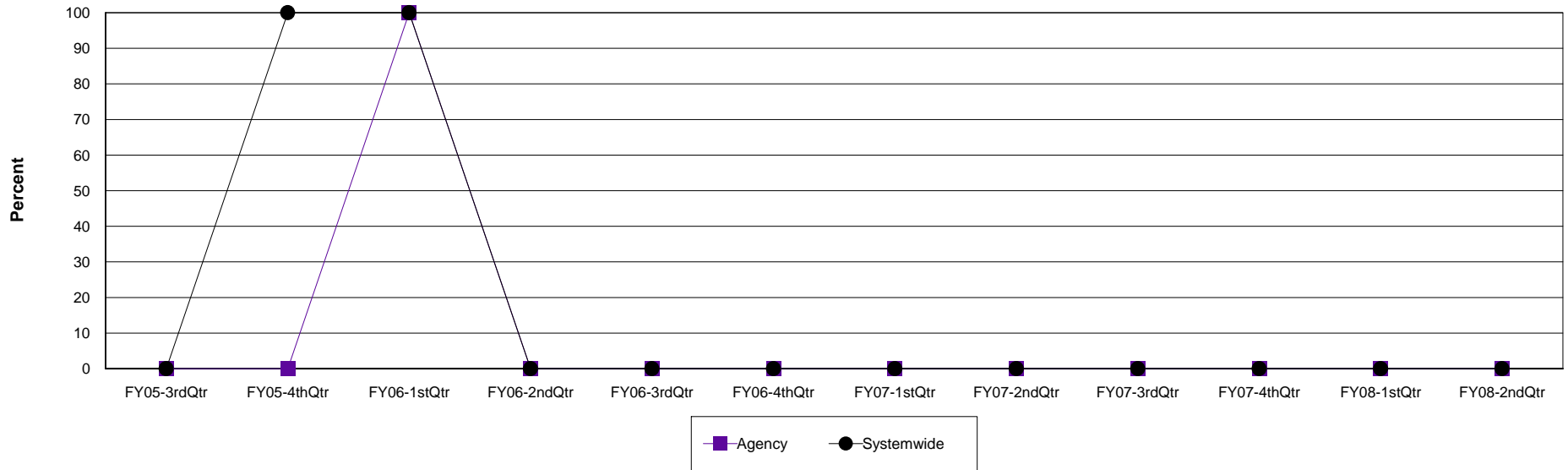
Agency: (640) 12 & 12, INC.

Level of Care: Detox

Contract Source: All Contract Sources

Age Group: Children (0-17)

Planned Discharges at 12 & 12, INC.



Agency	FY05-3rdQtr	FY05-4thQtr	FY06-1stQtr	FY06-2ndQtr	FY06-3rdQtr	FY06-4thQtr	FY07-1stQtr	FY07-2ndQtr	FY07-3rdQtr	FY07-4thQtr	FY08-1stQtr	FY08-2ndQtr
Planned	0	0	1	0	0	0	0	0	0	0	0	0
Discharges	0	0	1	0	0	0	0	0	0	0	0	0
Percent	0.0%	0.0%	100.0%	0.0%	0.0%	0.0%	0.0%	0.0%	0.0%	0.0%	0.0%	0.0%

Systemwide	FY05-3rdQtr	FY05-4thQtr	FY06-1stQtr	FY06-2ndQtr	FY06-3rdQtr	FY06-4thQtr	FY07-1stQtr	FY07-2ndQtr	FY07-3rdQtr	FY07-4thQtr	FY08-1stQtr	FY08-2ndQtr
Planned	0	4	1	0	0	0	0	0	0	0	0	0
Discharges	1	4	1	0	0	0	0	0	0	0	0	0
Percent	0.0%	100.0%	100.0%	0.0%	0.0%	0.0%	0.0%	0.0%	0.0%	0.0%	0.0%	0.0%

Planned Discharges-Trend Line

Planned Discharges/Level of Care Changes for the last Twelve Quarters

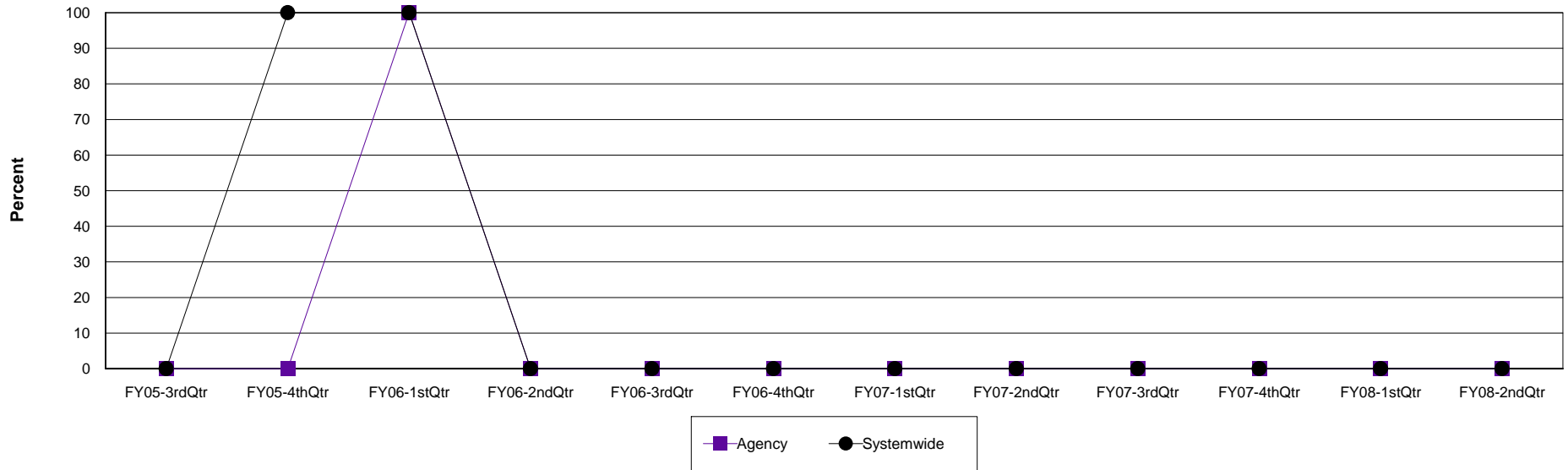
Agency: (640) 12 & 12, INC.

Level of Care: Detox

Contract Source: (02) ALCOHOL/DRUG

Age Group: Children (0-17)

Planned Discharges at 12 & 12, INC.



Agency	FY05-3rdQtr	FY05-4thQtr	FY06-1stQtr	FY06-2ndQtr	FY06-3rdQtr	FY06-4thQtr	FY07-1stQtr	FY07-2ndQtr	FY07-3rdQtr	FY07-4thQtr	FY08-1stQtr	FY08-2ndQtr
Planned	0	0	1	0	0	0	0	0	0	0	0	0
Discharges	0	0	1	0	0	0	0	0	0	0	0	0
Percent	0.0%	0.0%	100.0%	0.0%	0.0%	0.0%	0.0%	0.0%	0.0%	0.0%	0.0%	0.0%

Systemwide	FY05-3rdQtr	FY05-4thQtr	FY06-1stQtr	FY06-2ndQtr	FY06-3rdQtr	FY06-4thQtr	FY07-1stQtr	FY07-2ndQtr	FY07-3rdQtr	FY07-4thQtr	FY08-1stQtr	FY08-2ndQtr
Planned	0	4	1	0	0	0	0	0	0	0	0	0
Discharges	1	4	1	0	0	0	0	0	0	0	0	0
Percent	0.0%	100.0%	100.0%	0.0%	0.0%	0.0%	0.0%	0.0%	0.0%	0.0%	0.0%	0.0%

Planned Discharges-Trend Line

Planned Discharges/Level of Care Changes for the last Twelve Quarters

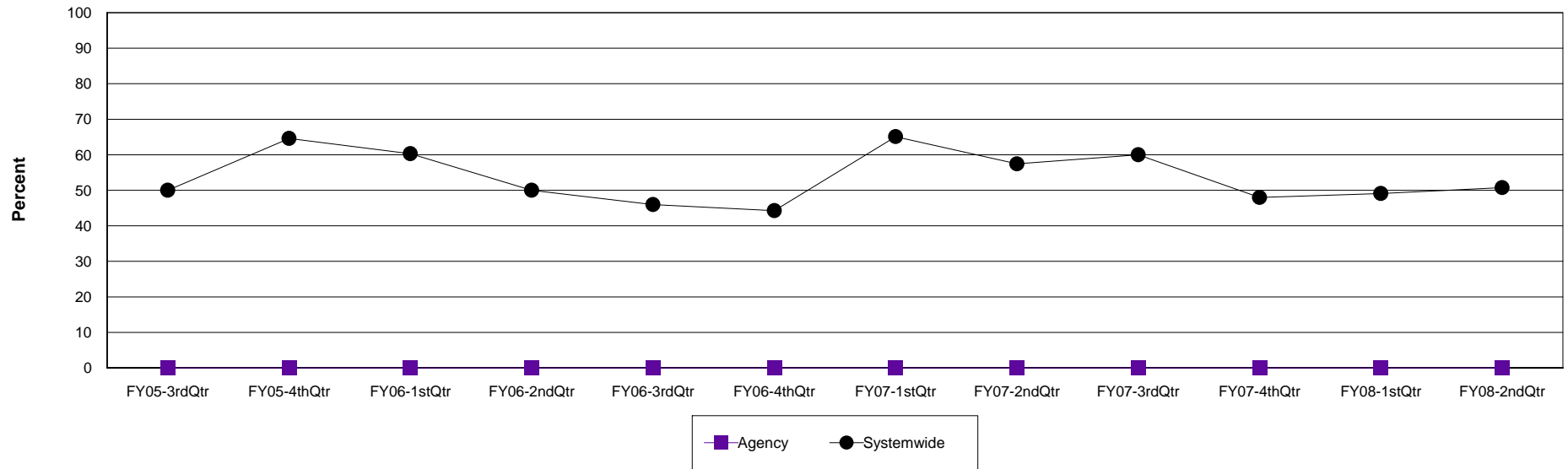
Agency: (640) 12 & 12, INC.

Level of Care: Residential Treatment

Contract Source: All Substance Abuse Contract Sources (PPMR)

Age Group: Children (0-17)

Planned Discharges at 12 & 12, INC.



Agency	FY05-3rdQtr	FY05-4thQtr	FY06-1stQtr	FY06-2ndQtr	FY06-3rdQtr	FY06-4thQtr	FY07-1stQtr	FY07-2ndQtr	FY07-3rdQtr	FY07-4thQtr	FY08-1stQtr	FY08-2ndQtr
Planned	0	0	0	0	0	0	0	0	0	0	0	0
Discharges	0	0	0	1	0	0	0	0	0	0	0	0
Percent	0.0%	0.0%	0.0%	0.0%	0.0%	0.0%	0.0%	0.0%	0.0%	0.0%	0.0%	0.0%

Systemwide	FY05-3rdQtr	FY05-4thQtr	FY06-1stQtr	FY06-2ndQtr	FY06-3rdQtr	FY06-4thQtr	FY07-1stQtr	FY07-2ndQtr	FY07-3rdQtr	FY07-4thQtr	FY08-1stQtr	FY08-2ndQtr
Planned	40	62	79	60	57	54	97	85	78	71	81	68
Discharges	80	96	131	120	124	122	149	148	130	148	165	134
Percent	50.0%	64.6%	60.3%	50.0%	46.0%	44.3%	65.1%	57.4%	60.0%	48.0%	49.1%	50.7%

Planned Discharges-Trend Line

Planned Discharges/Level of Care Changes for the last Twelve Quarters

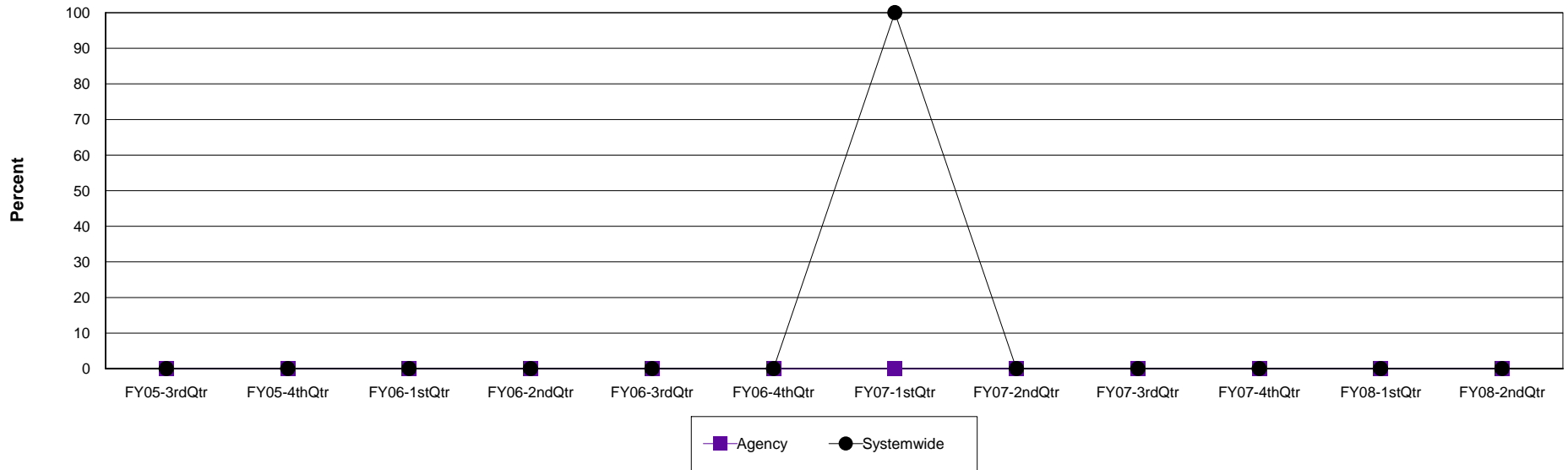
Agency: (640) 12 & 12, INC.

Level of Care: Residential Treatment

Contract Source: All Contract Sources

Age Group: Children (0-17)

Planned Discharges at 12 & 12, INC.



Agency	FY05-3rdQtr	FY05-4thQtr	FY06-1stQtr	FY06-2ndQtr	FY06-3rdQtr	FY06-4thQtr	FY07-1stQtr	FY07-2ndQtr	FY07-3rdQtr	FY07-4thQtr	FY08-1stQtr	FY08-2ndQtr
Planned	0	0	0	0	0	0	0	0	0	0	0	0
Discharges	0	0	0	1	0	0	0	0	0	0	0	0
Percent	0.0%	0.0%	0.0%	0.0%	0.0%	0.0%	0.0%	0.0%	0.0%	0.0%	0.0%	0.0%

Systemwide	FY05-3rdQtr	FY05-4thQtr	FY06-1stQtr	FY06-2ndQtr	FY06-3rdQtr	FY06-4thQtr	FY07-1stQtr	FY07-2ndQtr	FY07-3rdQtr	FY07-4thQtr	FY08-1stQtr	FY08-2ndQtr
Planned	0	0	0	0	0	0	1	0	0	0	0	0
Discharges	0	0	0	2	0	0	1	0	0	0	0	0
Percent	0.0%	0.0%	0.0%	0.0%	0.0%	0.0%	100.0%	0.0%	0.0%	0.0%	0.0%	0.0%

Planned Discharges-Trend Line

Planned Discharges/Level of Care Changes for the last Twelve Quarters

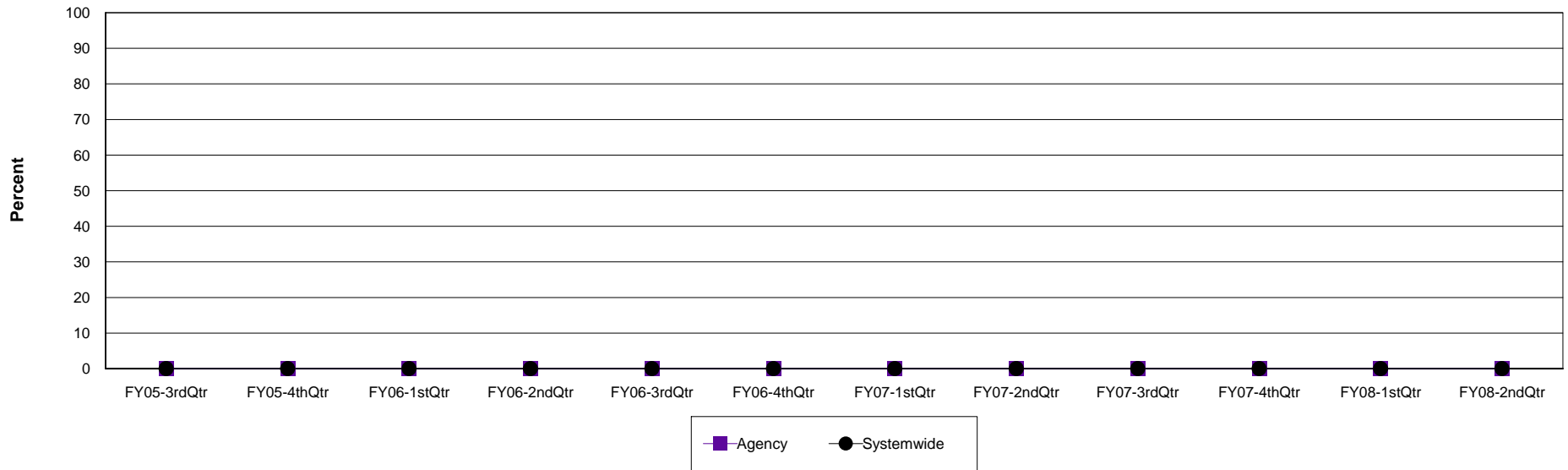
Agency: (640) 12 & 12, INC.

Level of Care: Residential Treatment

Contract Source: (21) ALCOHOL/DRUG SPECIALIZED PROGRAMS

Age Group: Children (0-17)

Planned Discharges at 12 & 12, INC.



Agency	FY05-3rdQtr	FY05-4thQtr	FY06-1stQtr	FY06-2ndQtr	FY06-3rdQtr	FY06-4thQtr	FY07-1stQtr	FY07-2ndQtr	FY07-3rdQtr	FY07-4thQtr	FY08-1stQtr	FY08-2ndQtr
Planned	0	0	0	0	0	0	0	0	0	0	0	0
Discharges	0	0	0	1	0	0	0	0	0	0	0	0
Percent	0.0%	0.0%	0.0%	0.0%	0.0%	0.0%	0.0%	0.0%	0.0%	0.0%	0.0%	0.0%

Systemwide	FY05-3rdQtr	FY05-4thQtr	FY06-1stQtr	FY06-2ndQtr	FY06-3rdQtr	FY06-4thQtr	FY07-1stQtr	FY07-2ndQtr	FY07-3rdQtr	FY07-4thQtr	FY08-1stQtr	FY08-2ndQtr
Planned	0	0	0	0	0	0	0	0	0	0	0	0
Discharges	0	0	0	1	0	0	0	0	0	0	0	0
Percent	0.0%	0.0%	0.0%	0.0%	0.0%	0.0%	0.0%	0.0%	0.0%	0.0%	0.0%	0.0%